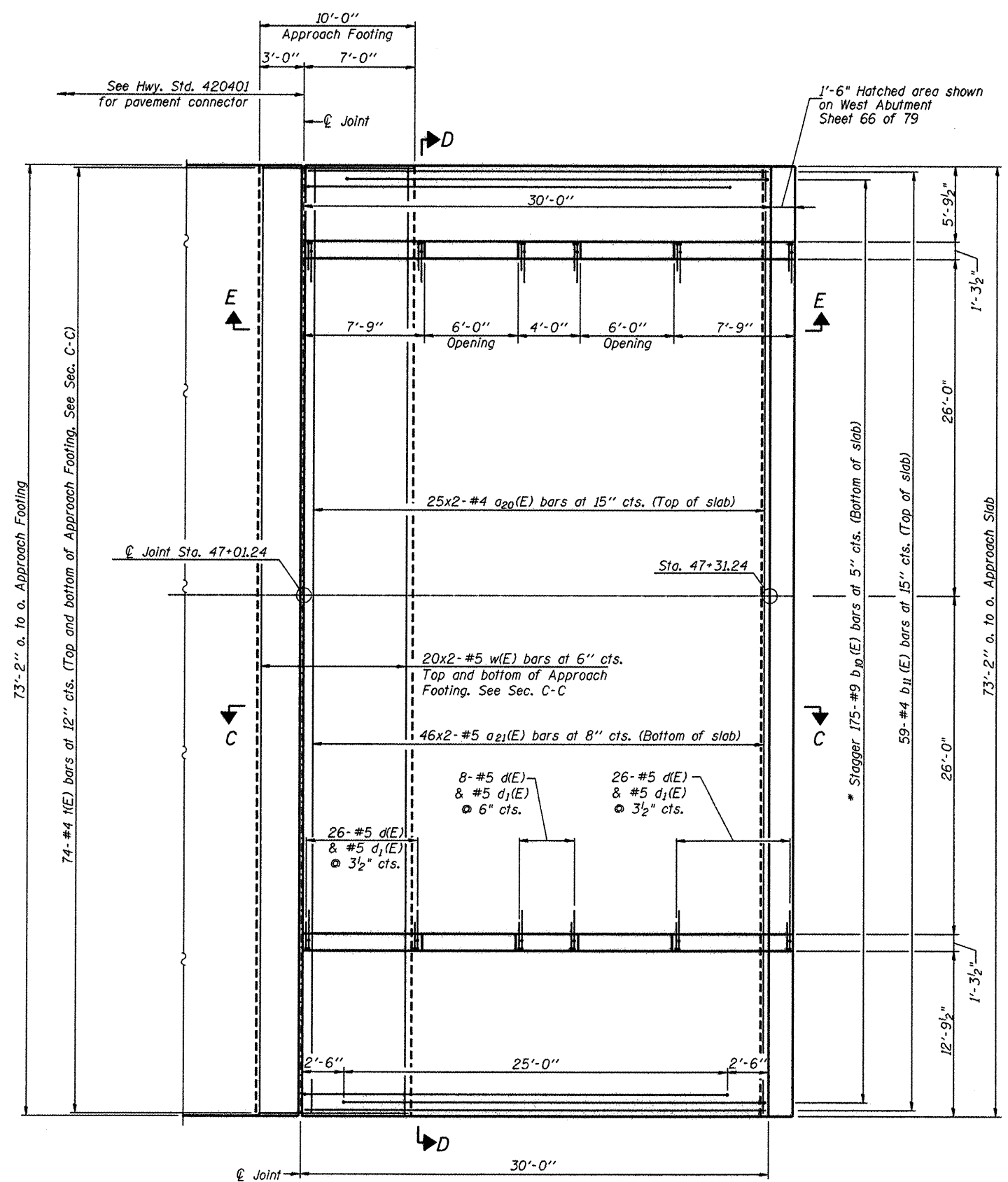
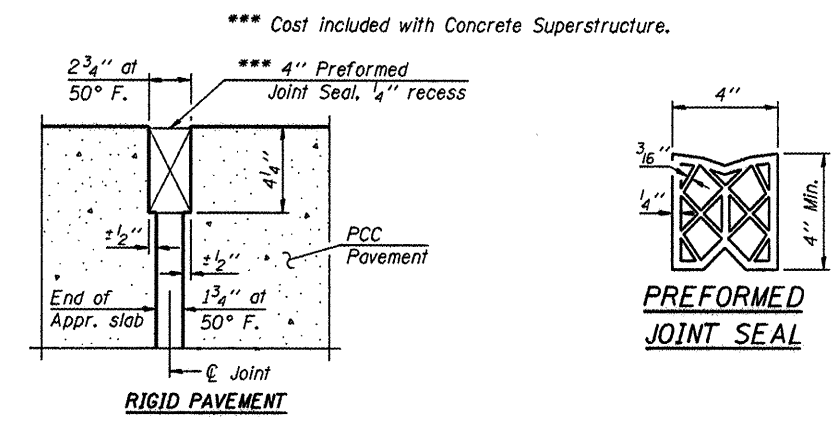


Notes:  
See sheet 18 of 79 for Sections C-C, D-D & F-F.  
a<sub>20</sub>(E) and a<sub>21</sub>(E) bar spacings measured along  $\hat{C}$  Rdwy.

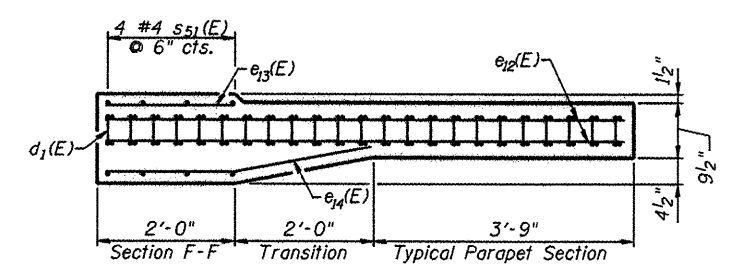


PLAN

\* Tilt #9 b<sub>10</sub>(E) bars as required to maintain clearance.

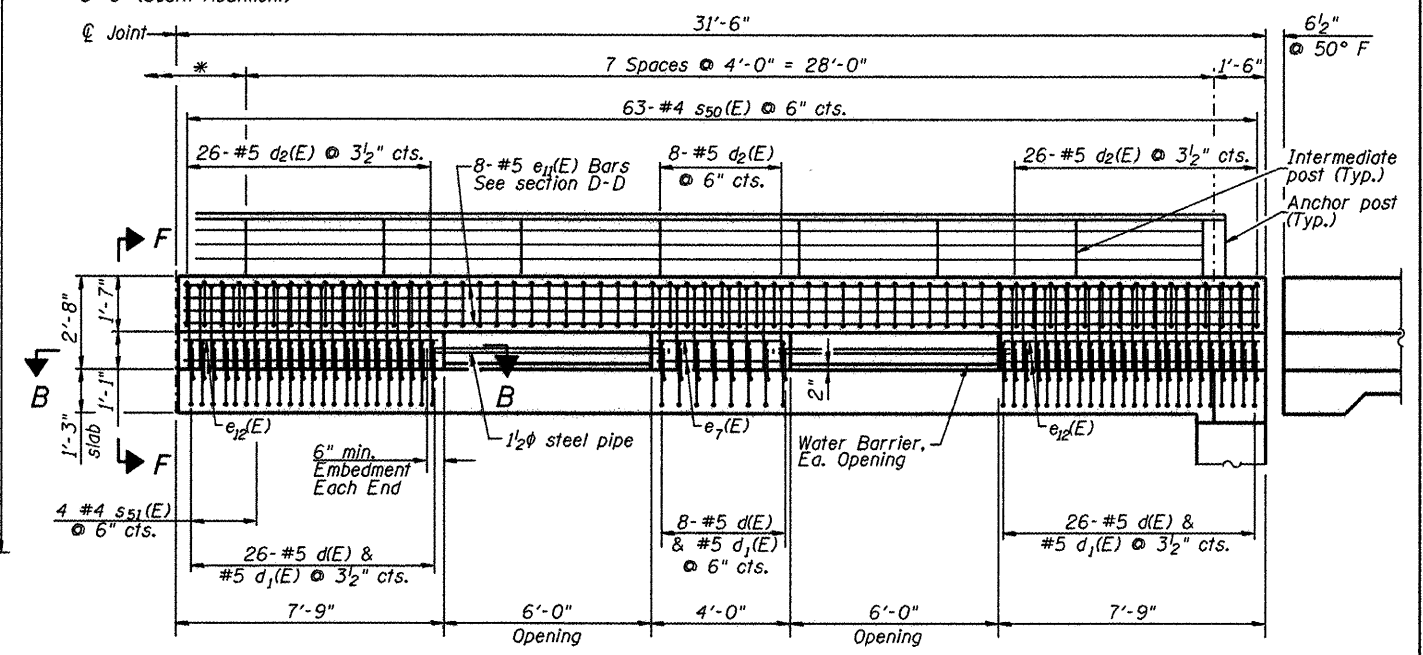


DETAIL A



SECTION B-B

\*Distance to first anchor post on roadway parapet:  
2'-6" (North parapet)  
3'-6" (South Abutment)



VIEW E-E

L:\ROCKFORD\082682\0-84\CAD\Sheets\5.17.W.BRIDGE APP SLAB DTLS.DGN

**CMT**  
CRAWFORD, MURPHY & TALLY, INC.  
CONSULTING ENGINEERS  
License No. 84-00663

**HNTB**

DESIGNED - PA, JDJ, BPD, CJW	REVISED -
DRAWN - GLD	REVISED -
CHECKED - RJK	REVISED -
DATE - 02/04/2011	REVISED -

**CITY OF ROCKFORD  
MORGAN STREET BRIDGE**

**WEST BRIDGE APPROACH SLAB DETAILS - I  
STRUCTURE NO. 101-6108**

F.A.U. RTE.	SECTION	COUNTY	TOTAL SHEETS	SHEET NO.
5077	99-00493-00-BR	WINNEBAGO	253	143
CONTRACT NO. 85529				
FED. ROAD DIST. NO. 2 [ILLINOIS] FED. AID PROJECT BRM-5091661				

SCALE: SHEET NO. 17 OF 79 SHEETS STA. 47+00.74 TO STA. 52+63.50