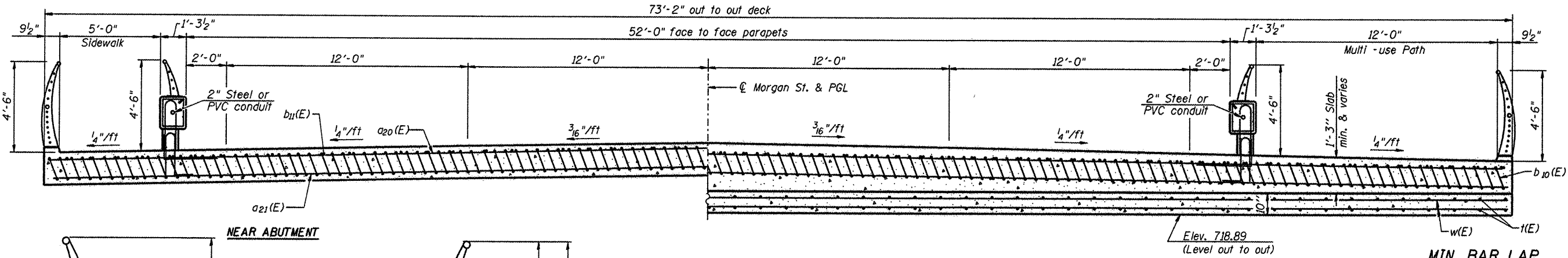
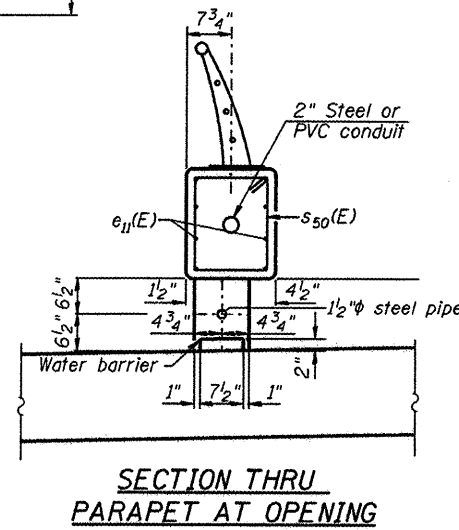
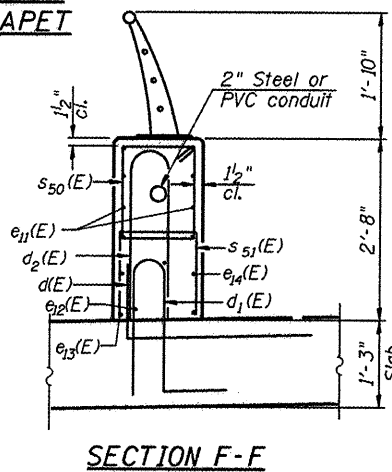
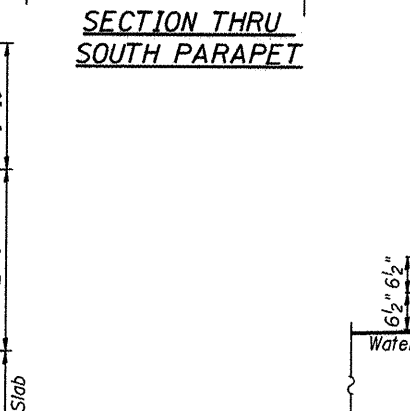
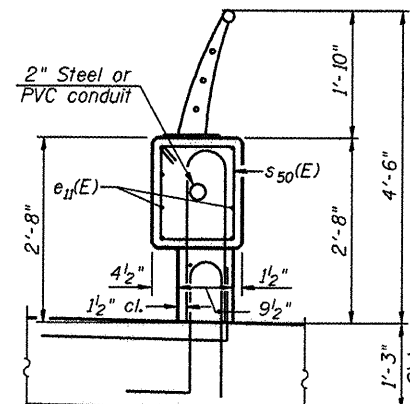
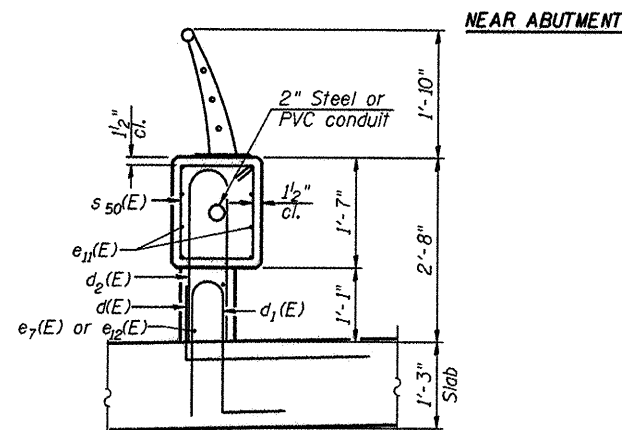


Notes:
 See sheet 17 of 79 for Detail A and Section F-F.
 Approach slab and parapet concrete shall be paid for as Concrete Superstructure.
 Approach footing concrete shall be paid for as Concrete Structures.
 Reinforcement shall be paid for as Reinforcement Bars, Epoxy Coated.
 For v(E) bar details, see sheet 66 of 79.
 The approach footing maximum applied service bearing pressure (Qmax) = 2.0 ksf.
 For bar splicer details, see sheet 76 of 79.
 Cost of excavation for approach footing included with Concrete Structures.
 For Select Backfill placement and MSE wall Treatment, see sheets 69 thru 72 of 79.
 For additional parapet details, see sheet 13 of 79.



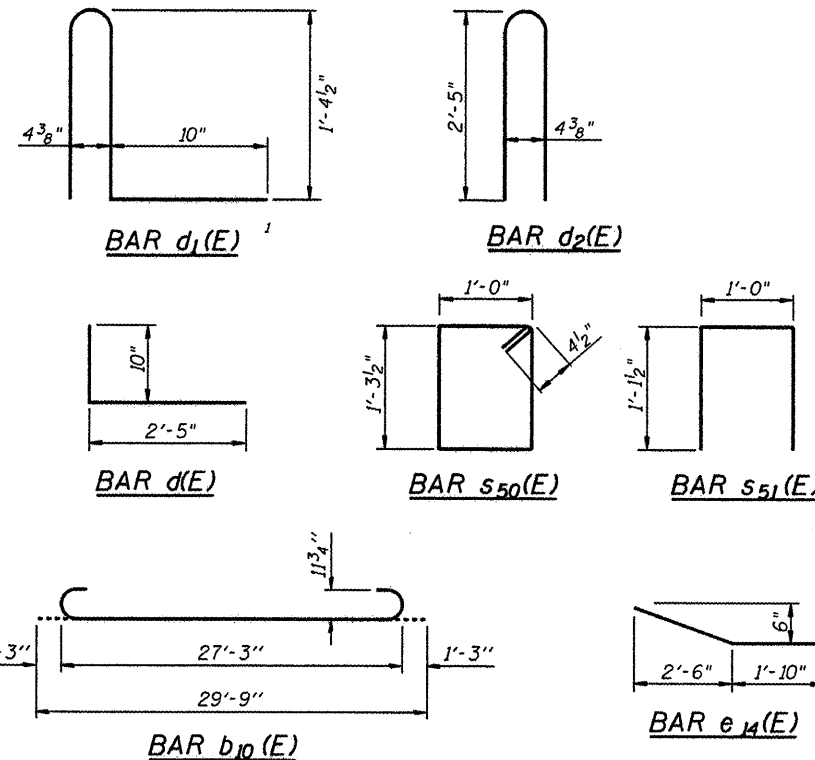
MIN. BAR LAP
 #4 bar = 2'-7"
 #5 bar = 3'-3"



SECTION D-D
 (See Plan for dimensions not shown)

AT APPROACH FOOTING

* Tilt #9 b10(E) bars as required to maintain clearance.
 *** Cost included with Concrete Superstructure.



WEST APPROACH
 BILL OF MATERIAL

Bar	No.	Size	Length	Shape
a20(E)	50	#4	37'-9"	—
a21(E)	92	#5	38'-1"	—
b10(E)	175	#9	29'-9"	—
b11(E)	59	#4	29'-8"	—
d(E)	120	#5	3'-3"	—
d1(E)	120	#5	3'-9 1/2"	—
d2(E)	120	#5	5'-0 1/2"	—
e11(E)	16	#5	31'-2"	—
e12(E)	8	#5	7'-6"	—
e13(E)	4	#5	3'-9"	—
e14(E)	4	#5	1'-9"	—
e15(E)	4	#5	5'-5"	—
s50(E)	126	#4	5'-4"	—
s51(E)	8	#4	3'-3"	—
t(E)	148	#4	9'-8"	—
w(E)	80	#5	38'-1"	—
Concrete Superstructure		Cu. Yd.	115.8	
Concrete Structures		Cu. Yd.	22.6	
Reinforcement Bars, Epoxy Coated		Pound	30,530	
Bridge Deck Grooving		Sq. Yd.	164.0	
Protective Coat		Sq. Yd.	257.0	

L:\ARCKE\PROJ\082682\DWG\CADD\Sheets\S.18.W.BRIDGE.APP.SLAB.DTLS.2.dgn



HNTB

DESIGNED - PA, JDJ, BPD, CJW
 DRAWN - GLD
 CHECKED - RJK
 DATE - 02/04/2011

REVISED -
 REVISED -
 REVISED -
 REVISED -

**CITY OF ROCKFORD
 MORGAN STREET BRIDGE**

**WEST BRIDGE APPROACH SLAB DETAILS - II
 STRUCTURE NO. 101-6108**

SCALE: SHEET NO. 18 OF 79 SHEETS STA. 47+00.74 TO STA. 52+63.50

F.A.U. RTE.	SECTION	COUNTY	TOTAL SHEETS	SHEET NO.
5077	99-00493-00-BR	WINNEBAGO	253	144
FED. ROAD DIST. NO. 2 ILLINOIS			CONTRACT NO. 85529	
FED. AID PROJECT BRM-50996S				