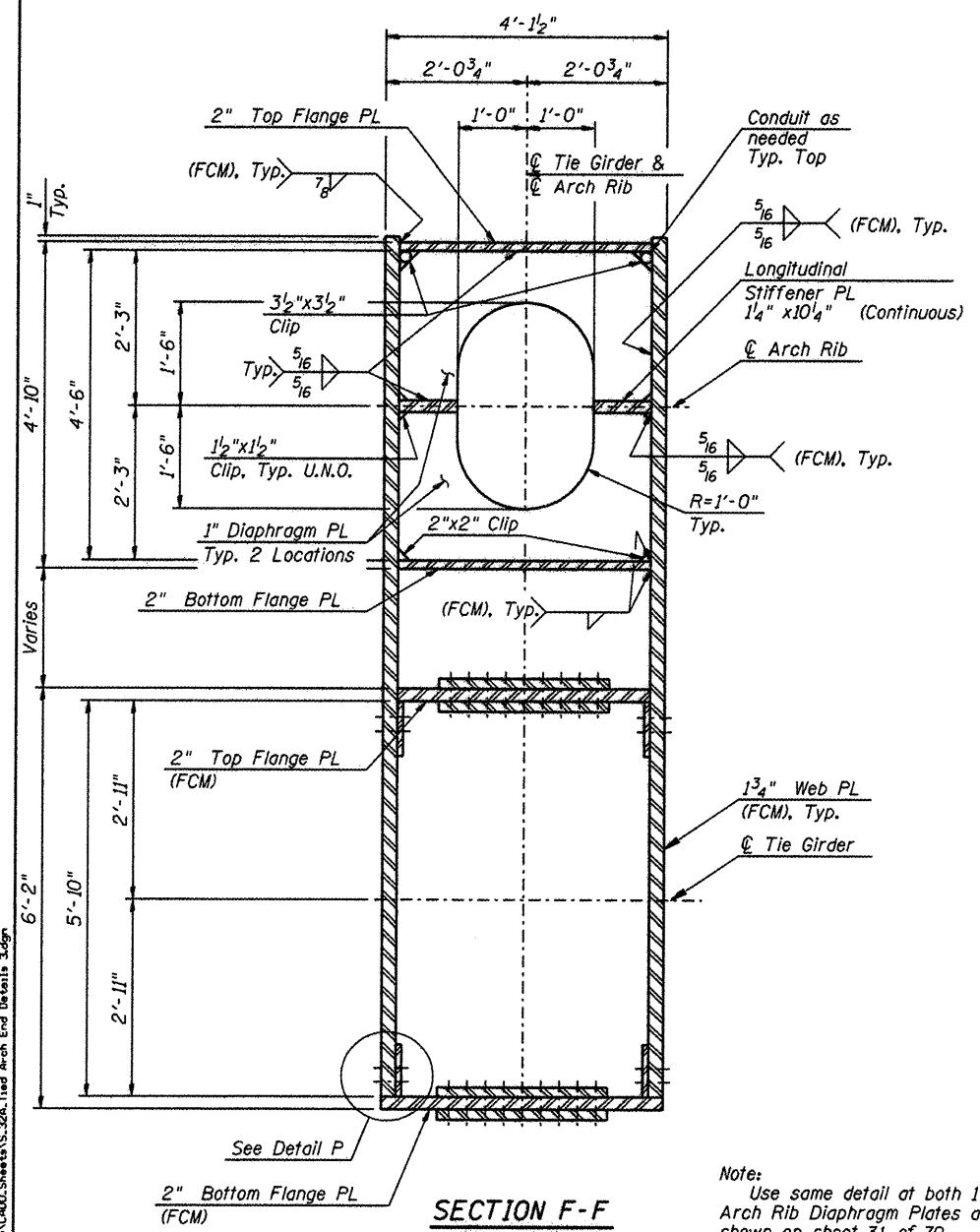


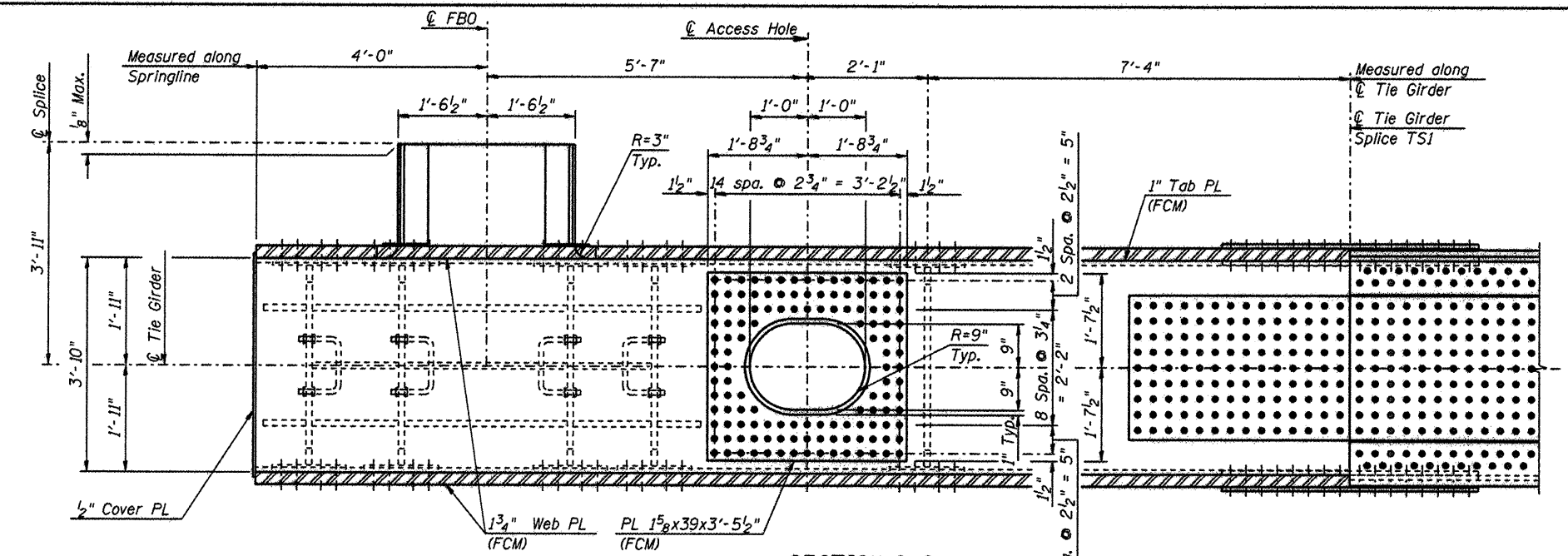
DETAIL P



SECTION F-F

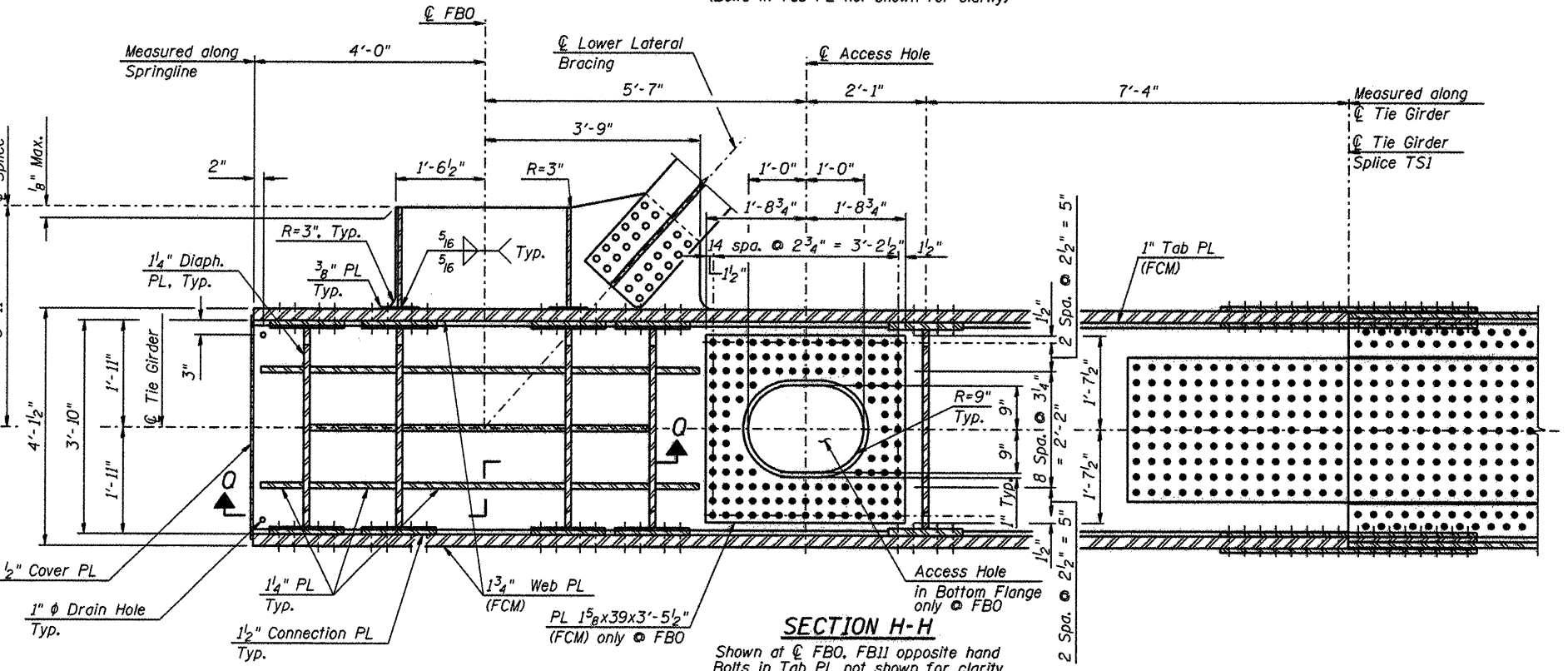
Tie Girder web splice plates not shown for clarity

Note:
Use same detail at both 1" Arch Rib Diaphragm Plates as shown on sheet 31 of 79.



SECTION G-G

Arch Rib not shown for clarity
Shown at © FBO, FBII opposite hand
(Bolts in Tab PL not shown for clarity)



SECTION H-H

Shown at © FBO, FBII opposite hand
Bolts in Tab PL not shown for clarity
Omit Access Hole and Plate at FBII Bottom Flange

- Notes:
- Denotes 7/8" φ high-strength bolt.
 - Denotes 1" φ high-strength bolt.
 - For Section Q-Q, see Sheet 33 of 79.
 - For Lower Lateral Bracing Details, see Sheet 62 of 79.
 - For additional notes and details, see Sheets 30, 31 and 33 of 79.
 - For Location of Sections F-F, G-G and H-H, see Sheet 30 of 79.

L:\ROCKFORD\0826002\Drawings\CADD\Sheets\5.326A.Tied Arch End Details 3.dgn

CMT
CHAMBERLAIN, MURPHY & TILLY, INC.
CONSULTING ENGINEERS
License No. 04-000613

HNTB

DESIGNED - PA, JDJ, BPD, CJW	REVISED -
DRAWN - GLD	REVISED -
CHECKED - RJK	REVISED -
DATE - 02/04/2011	REVISED -

**CITY OF ROCKFORD
MORGAN STREET BRIDGE**

**TIED ARCH END DETAILS - II
STRUCTURE NO. 101-6108**

SCALE: SHEET NO. 32 OF 79 SHEETS STA. 47+00.74 TO STA. 52+63.50

F.A.U. RTE.	SECTION	COUNTY	TOTAL SHEETS	SHEET NO.
5077	99-00493-00-BR	WINNEBAGO	253	158
FED. ROAD DIST. NO. 2 [ILLINOIS] FED. AID PROJECT BRM-50994651			CONTRACT NO. 85529	