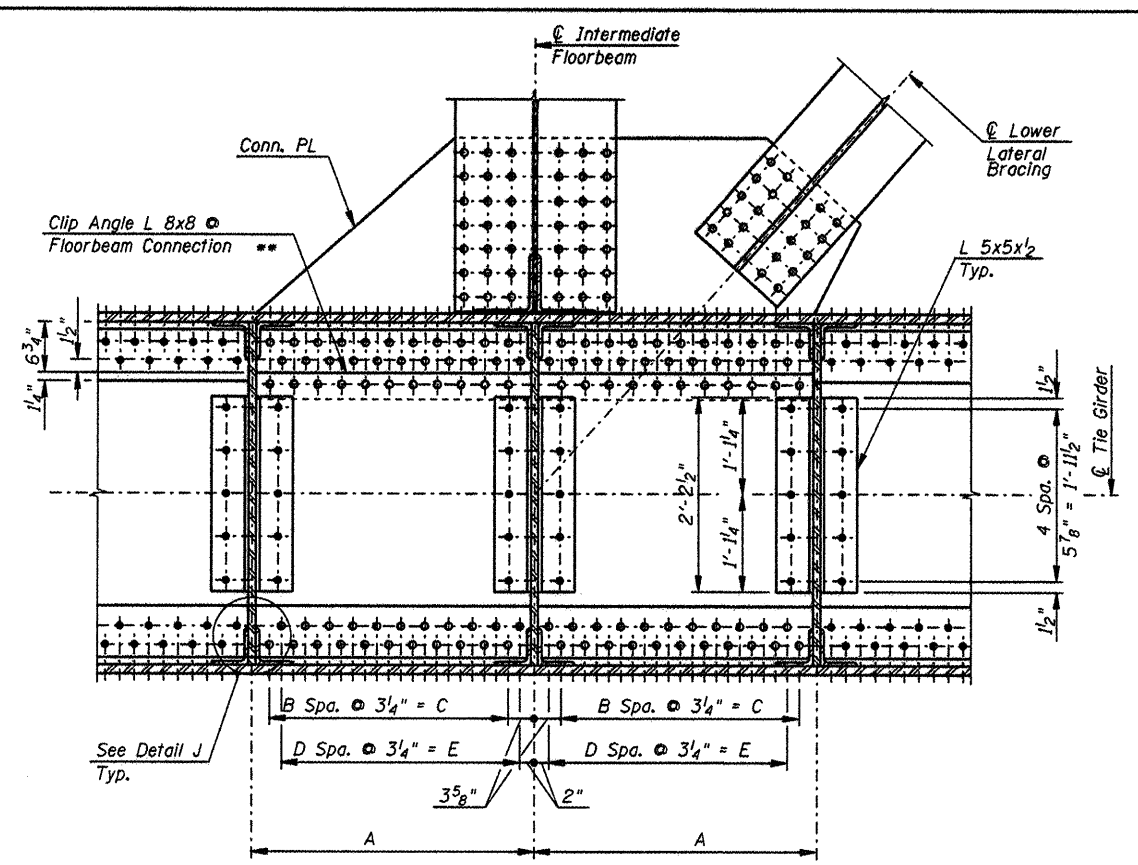


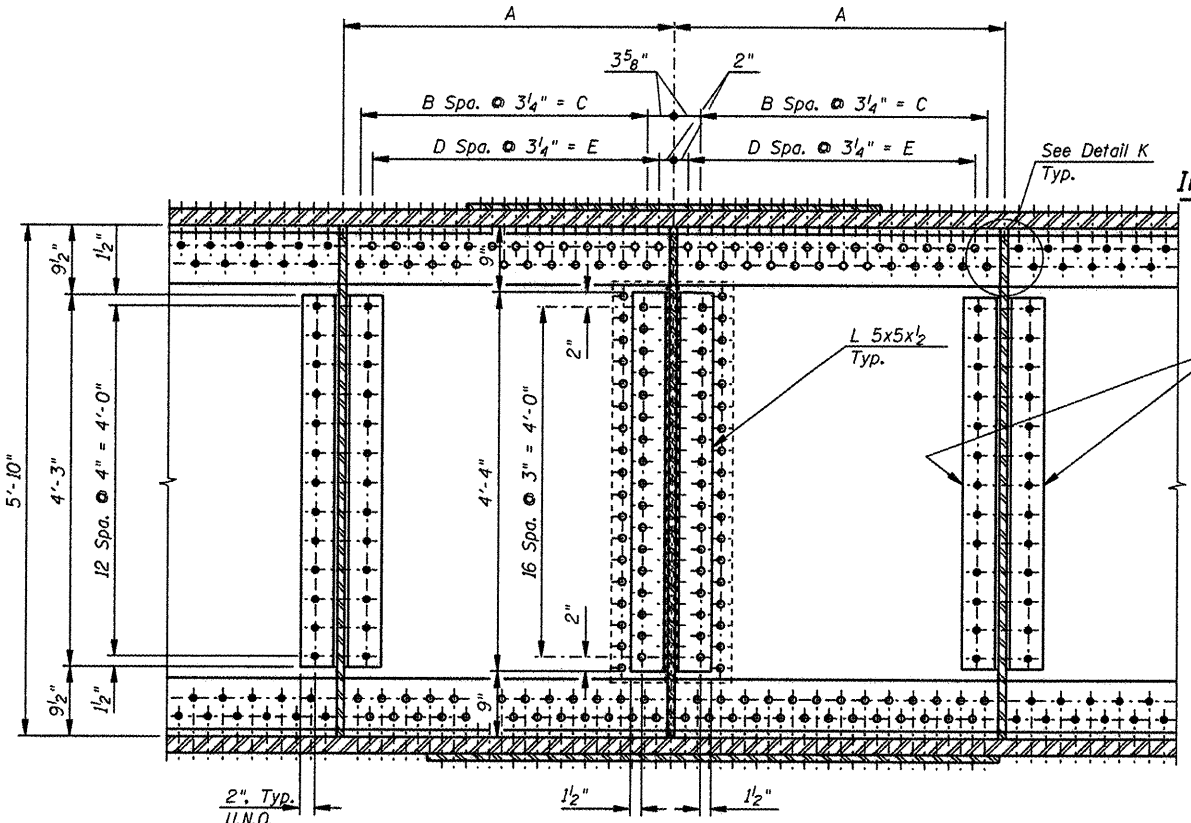
SECTION E-E

Shown \odot Hanger Work Point TH1
Other Locations Similar - See Table of Dimensions on this Sheet.



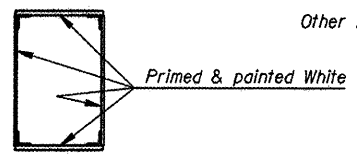
SECTION F-F

Shown \odot Hanger Work Point TH1
Other Locations Similar - See Table of Dimensions on this Sheet.

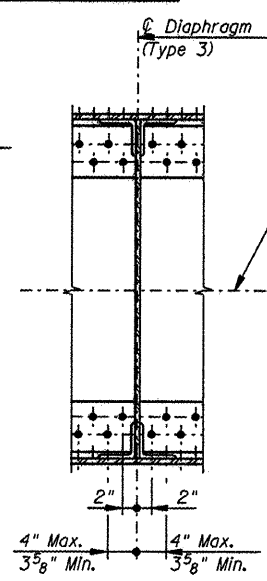


SECTION G-G

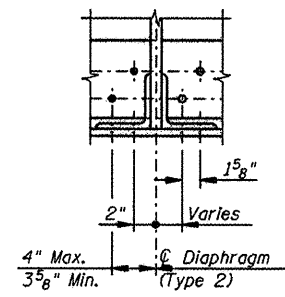
Shown \odot Hanger Work Point TH1
Other Locations Similar - See Table of Dimensions on this Sheet.



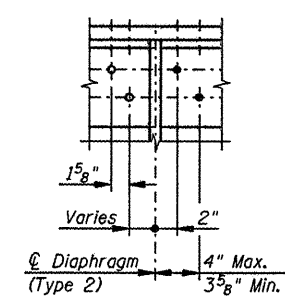
TIE GIRDER INTERIOR PAINT DETAIL



SECTION H-H



DETAIL J



DETAIL K

| TABLE OF DIMENSIONS | | | | | |
|--|-------|----|-----------|----|-----------|
| HANGER WORK POINT AT SPRING LINE TH(n) | A* | B | C | D | E |
| TH1 (Hanger H1) | 3'-3" | 10 | 2'-8 1/2" | 10 | 2'-8 1/2" |
| TH1 (Hanger H2) | 2'-9" | 8 | 2'-2" | 8 | 2'-2" |
| TH2 Thru TH9 | 3'-3" | 10 | 2'-8 1/2" | 10 | 2'-8 1/2" |
| TH10 (Hanger H19) | 2'-9" | 8 | 2'-2" | 8 | 2'-2" |
| TH10 (Hanger H20) | 3'-3" | 10 | 2'-8 1/2" | 10 | 2'-8 1/2" |

* Dimension "A" Measured along \odot Tie Girder

Notes:
 \odot Denotes 7/8" ϕ high-strength bolt.
 \odot Denotes 1" ϕ high-strength bolt.
 For Tie Girder Hanger Details, see Sheets 49 and 50 of 79.
 For Top of Floorbeam Connection Details, see Sheets 56 and 57 of 79.
 For Bottom of Floorbeam Connection Details, see Lower Lateral Bracing Details, on Sheet 62 of 79.
 U.N.O. denotes unless noted otherwise.
 For Locations of Sections E-E, F-F, G-G and H-H, see Sheets 41 thru 43 of 79.

L:\RCD\CD\000-0826802\0-0-0\000-Sheets\46-Tie Girder-Misc Details.dgn

CMT
 CRAWFORD, MURPHY & TILLY, INC.
 CONSULTING ENGINEERS
 License No. 04-006613

HNTB

| | |
|------------------------------|-----------|
| DESIGNED - PA, JDJ, BPD, CJW | REVISED - |
| DRAWN - GLD | REVISED - |
| CHECKED - RJK | REVISED - |
| DATE - 02/04/2011 | REVISED - |

**CITY OF ROCKFORD
 MORGAN STREET BRIDGE**

**TIE GIRDER MISCELLANEOUS DETAILS
 STRUCTURE NO. 101-6108**

SCALE: SHEET NO. 46 OF 79 SHEETS STA. 47+00.74 TO STA. 52+63.50

| F.A.U. RTE. | SECTION | COUNTY | TOTAL SHEETS | SHEET NO. |
|---|----------------|-----------|--------------|-----------|
| 5077 | 99-00493-00-BR | WINNEBAGO | 253 | 172 |
| CONTRACT NO. 85529 | | | | |
| FED. ROAD DIST. NO. 2 ILLINOIS FED. AID PROJECT BRM-5099665 | | | | |