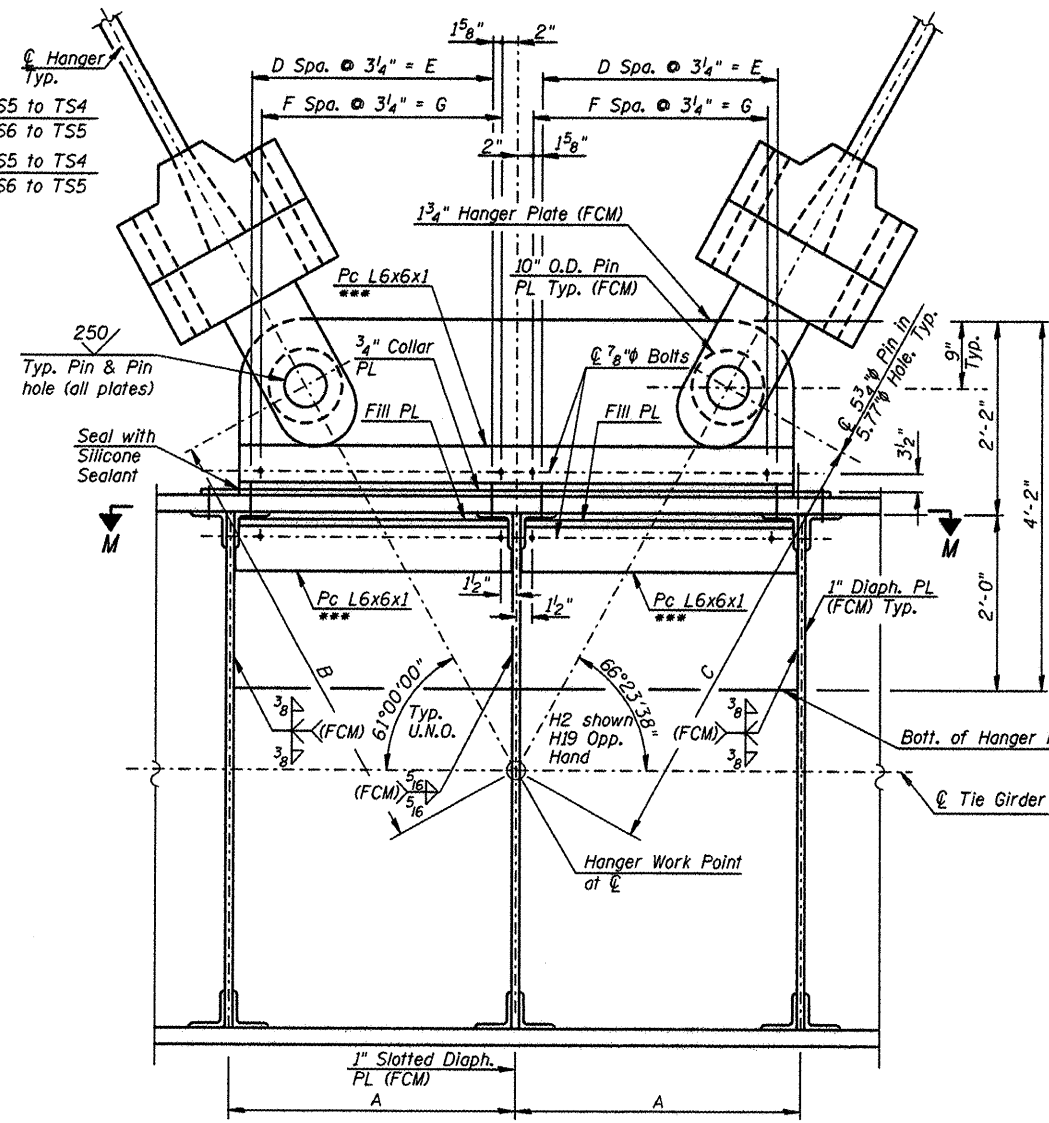
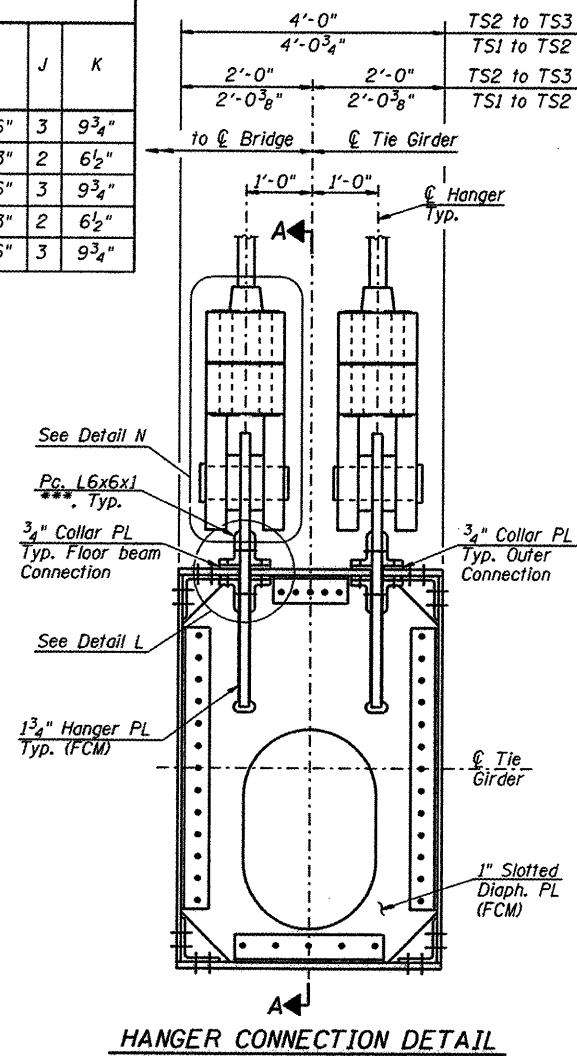
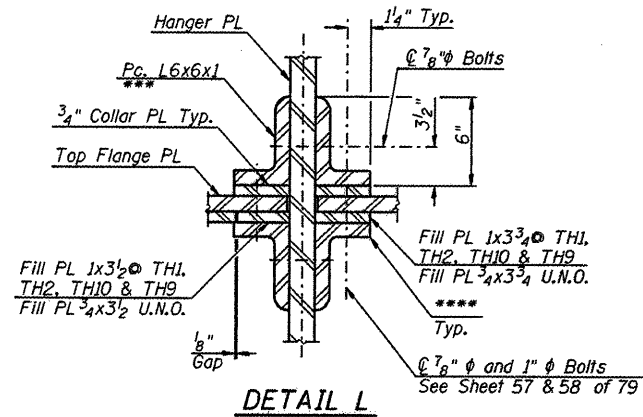
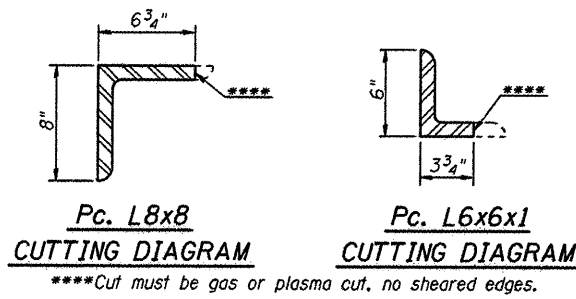
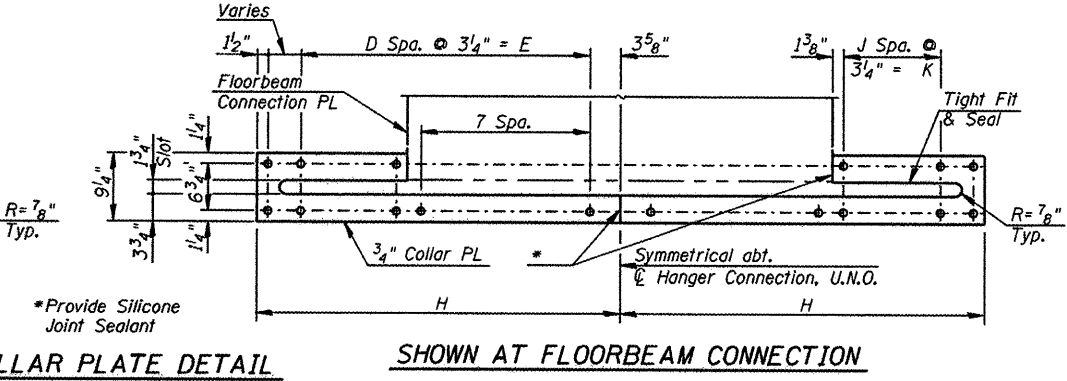
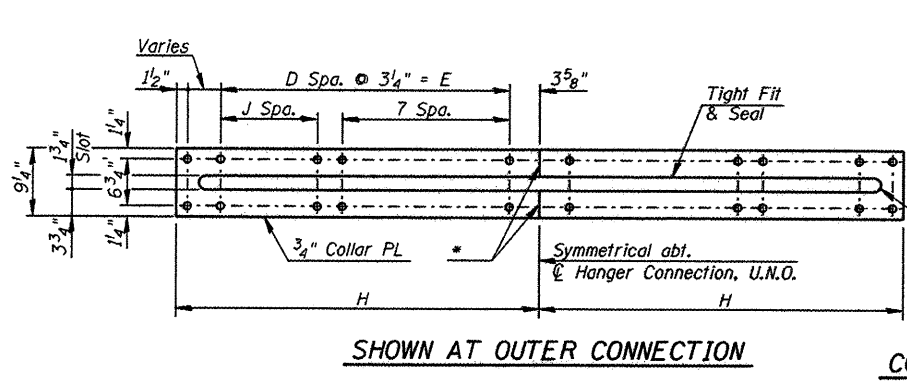
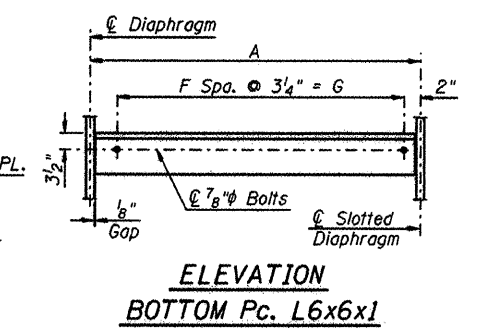
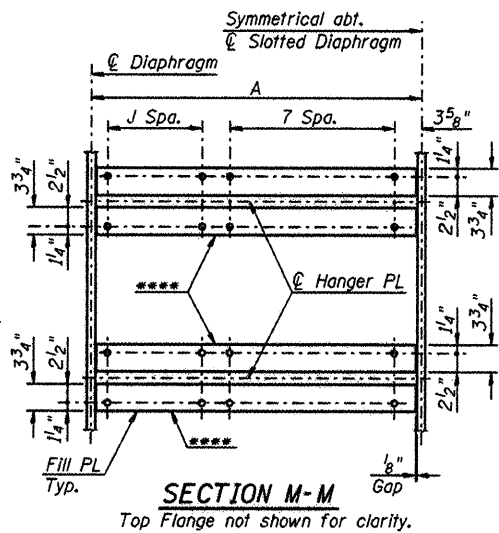


TABLE OF DIMENSIONS										
HANGER WORK POINT AT TIE GIRDER TH(n)	A	B	C	D	E	F	G	H	J	K
TH1 (H1)	3'-3"	4'-11 ⁷ / ₁₆ "	-	10	2'-8 ¹ / ₂ "	10	2'-8 ¹ / ₂ "	3'-6"	3	9 ³ / ₄ "
TH1 (H2)	2'-9"	-	4'-8 ³ / ₄ "	8	2'-2"	9	2'-5 ¹ / ₄ "	3'-3"	2	6 ¹ / ₂ "
TH2 Thru TH9	3'-3"	4'-11 ⁷ / ₁₆ "	4'-11 ⁷ / ₁₆ "	10	2'-8 ¹ / ₂ "	10	2'-8 ¹ / ₂ "	3'-6"	3	9 ³ / ₄ "
TH10 (H19)	3'-3"	4'-8 ³ / ₄ "	-	8	2'-2"	9	2'-5 ¹ / ₄ "	3'-3"	2	6 ¹ / ₂ "
TH10 (H20)	2'-9"	-	4'-11 ⁷ / ₁₆ "	10	2'-8 ¹ / ₂ "	10	2'-8 ¹ / ₂ "	3'-6"	3	9 ³ / ₄ "

** Dimension "A" measured along \bar{C} Tie Girder



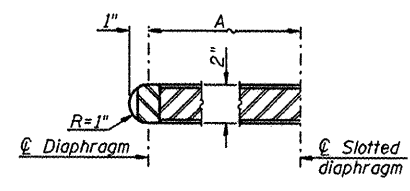
***Holes in 6" leg shall be oversized. Holes in the 3 3/4" leg shall be standard holes.



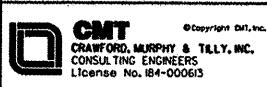
*Provide Silicone Joint Sealant

Notes:

- Denotes 7/8" ϕ high-strength bolt.
- Denotes 1" ϕ high-strength bolt.
- Fracture Critical Members (FCM) are delineated in the details on this sheet. Members called out as FCM shall be M270 Gr. 50 F3(FCM). These members and plates shall be clearly labeled on shop drawings.
- Magnetic particle inspection by the yoke method is required on welds to fracture critical members.
- Hanger Plate to Tie Girder connection angles shall conform to the requirements of M270 Gr. 50W.
- Cotter pins and pins shall conform to the requirements of ASTM A276 A304N stainless steel with $F_y=35$ ksi.
- All structural steel shall conform to the requirements of M270 Gr. 50W, unless noted otherwise.
- For Detail N and additional Tie Girder Hanger Details, see Sheet 50 of 79.
- For additional Tie Girder Details, see Sheets 41 thru 46 of 79.
- U.N.O. denotes unless noted otherwise.



L:\AR\CD\PRD\0826882\0-00\CADD_Sheets\65_Tie Girder Hanger Details.rvt



HNTB

DESIGNED - PA, JDJ, BPD, CJW	REVISED -
DRAWN - GLD	REVISED -
CHECKED - RJK	REVISED -
DATE - 02/04/2011	REVISED -

**CITY OF ROCKFORD
MORGAN STREET BRIDGE**

**TIE GIRDER HANGER DETAILS - I
STRUCTURE NO. 101-6108**

SCALE: SHEET NO. 49 OF 79 SHEETS STA. 47+00.74 TO STA. 52+63.50

F.A.U. RTE.	SECTION	COUNTY	TOTAL SHEETS	SHEET NO.
5077	99-00493-00-BR	WINNEBAGO	253	175
CONTRACT NO. 85529			FED. ROAD DIST. NO. 2 [ILLINOIS] FED. AID PROJECT BRM-5099651	