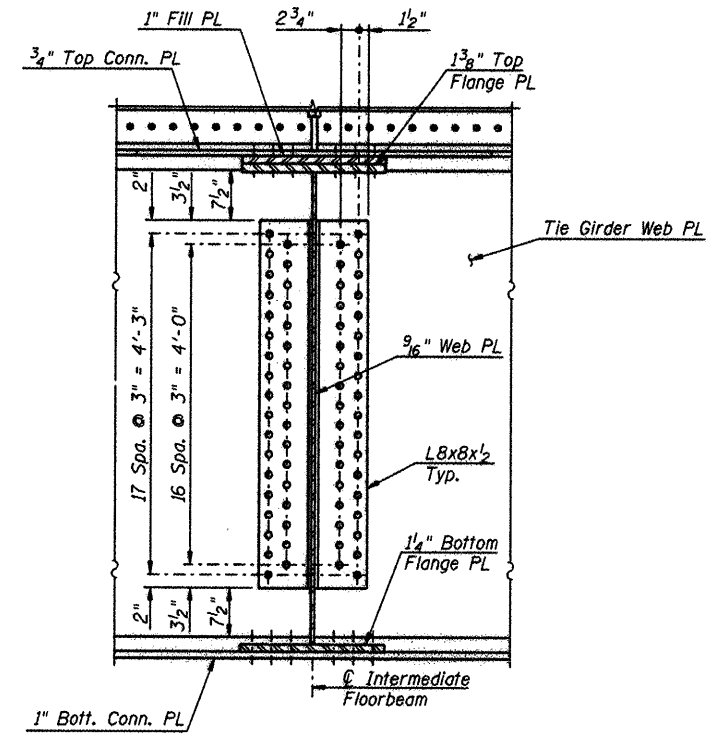
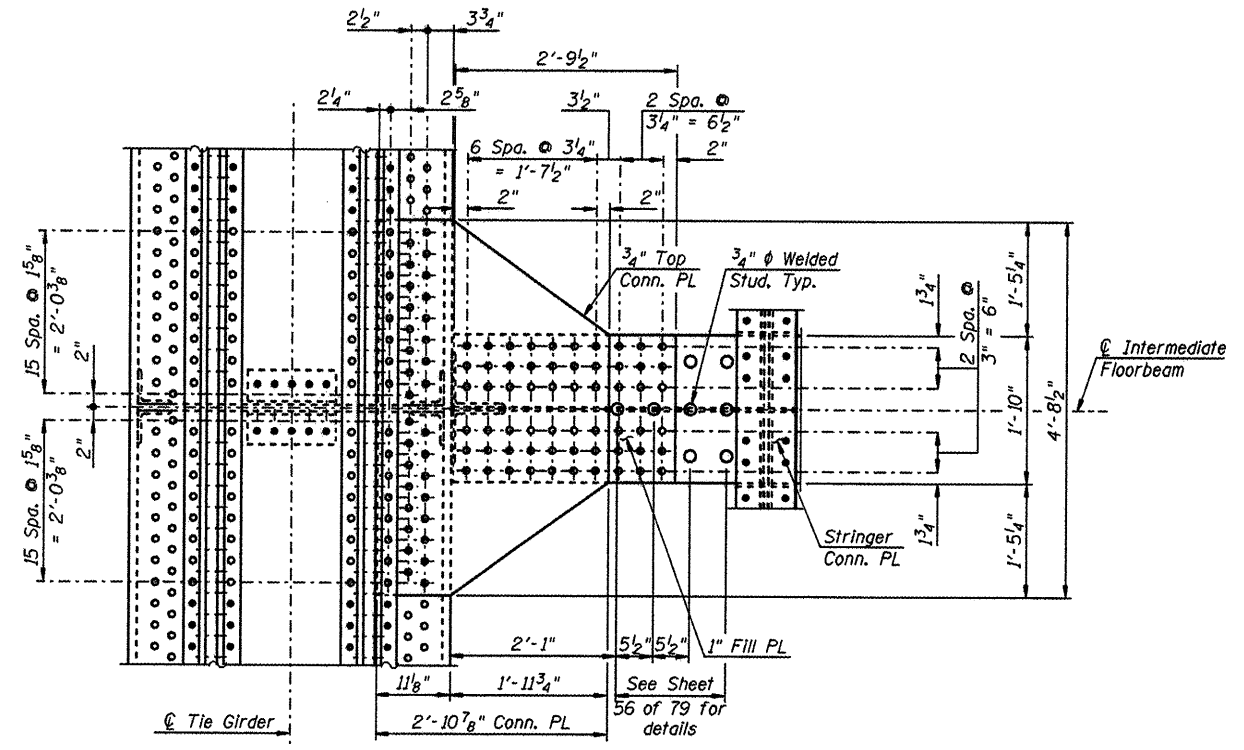


SECTION THRU SPLICE
(Floorbeams 1, 2, 9 and 10)



SECTION B-B
(Bolts in Tie Girder not shown for clarity)



VIEW A-A

Notes:
 • Denotes 7/8" ϕ high-strength bolt.
 ○ Denotes 1" ϕ high-strength bolt.
 For Intermediate Floorbeam Elevation and additional notes, see Sheet 56 of 79.
 For Tie Girder Details, see Sheets 41 thru 43 and 46 of 79.
 For Tie Girder Hanger Details, see Sheets 49 and 50 of 79.

L:\PROJECTS\0826882\0-855\CAD\Sheets\5.58.Int.Floorbeam.Details.2.dgn

CMT
 CRAWFORD, MURPHY & TILLY, INC.
 CONSULTING ENGINEERS
 License No. IS4-000613

HNTB

DESIGNED - PA, JDJ, BPD, CJW	REVISED -
DRAWN - GLD	REVISED -
CHECKED - RJK	REVISED -
DATE - 02/04/2011	REVISED -

CITY OF ROCKFORD
MORGAN STREET BRIDGE

MISCELLANEOUS FLOORBEAM DETAILS	
STRUCTURE NO. 101-6108	
SCALE: 1/4" = 1'-0"	SHEET NO. 58 OF 79 SHEETS
STA. 47+00.74 TO STA. 52+63.50	

F.A.U. RTE.	SECTION	COUNTY	TOTAL SHEETS	SHEET NO.
5077	99-00493-00-BR	WINNEBAGO	253	184
FED. ROAD DIST. NO. 2 ILLINOIS			CONTRACT NO. 85529	
FED. AID PROJECT BRM-5099651				