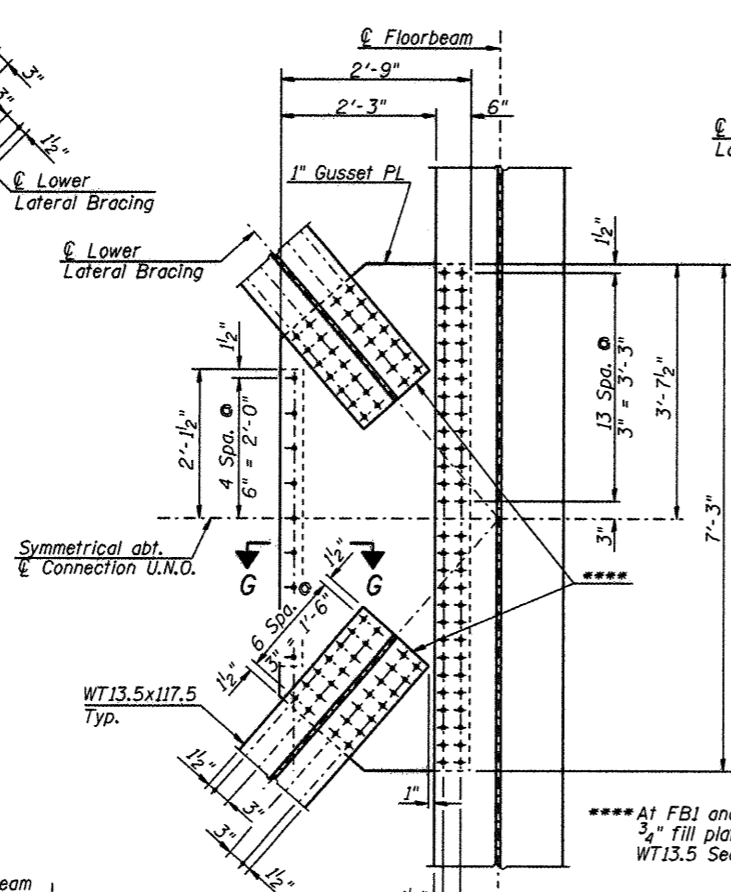


DETAIL B

Shown at Tie Girder Panel Point T0
Tie Girder Panel Point T11 Opposite Hand
Typical @ 4 Locations

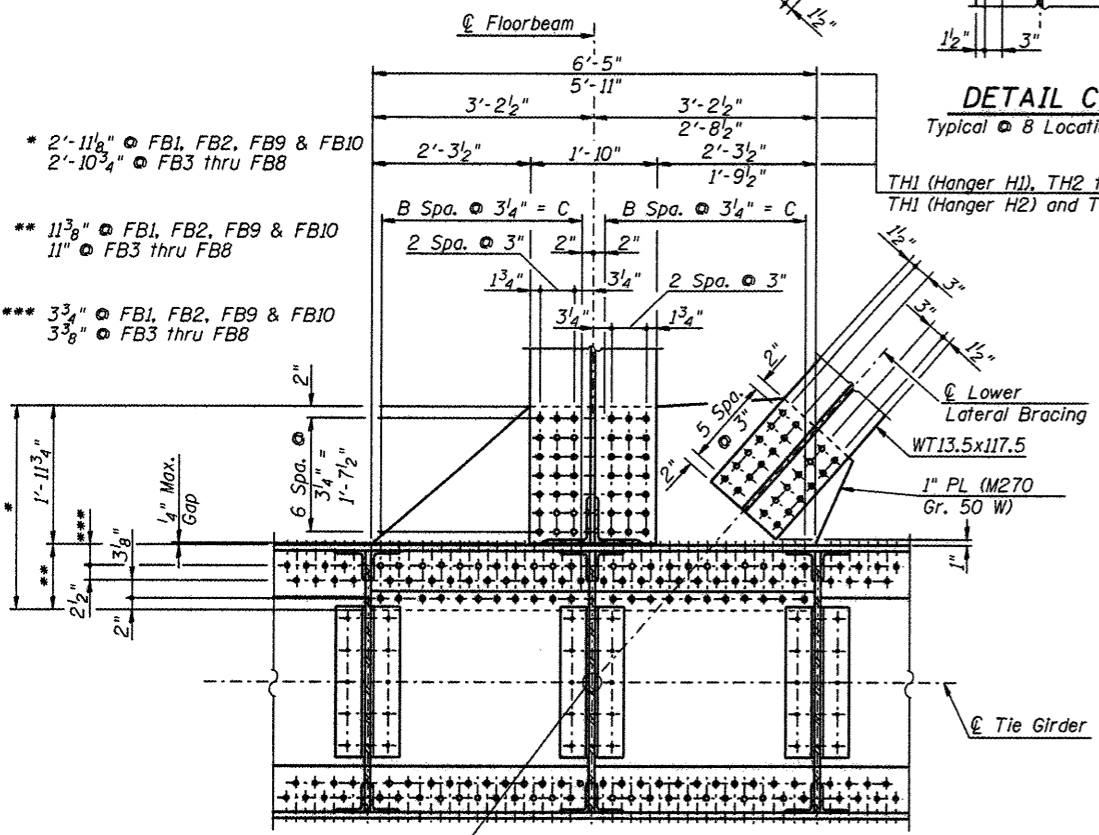


DETAIL C

Typical @ 8 Locations

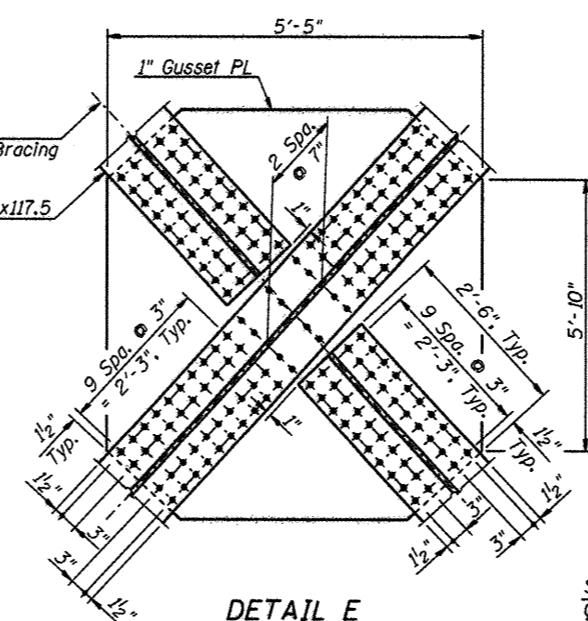
- * 2'-11 1/8" @ FB1, FB2, FB9 & FB10
2'-10 3/4" @ FB3 thru FB8
- ** 11 3/8" @ FB1, FB2, FB9 & FB10
11" @ FB3 thru FB8
- *** 3 3/8" @ FB1, FB2, FB9 & FB10
3 3/8" @ FB3 thru FB8

TH1 (Hanger H1), TH2 thru TH9, TH10 (Hanger 20)
TH1 (Hanger H2) and TH10 (Hanger 19)



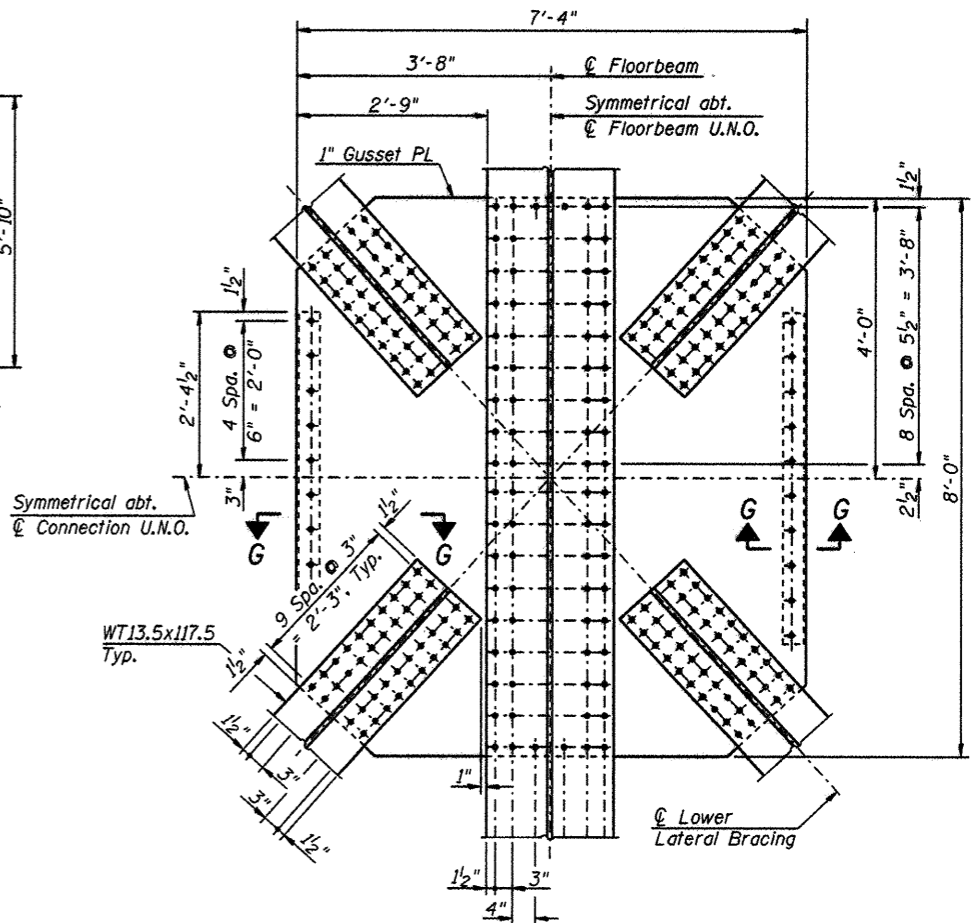
DETAIL F

Shown at Tie Girder Panel Point T3, EB
Other Locations Similar, Typical @ 20 Locations



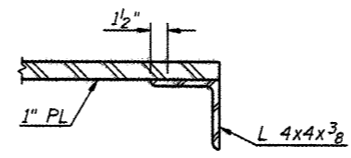
DETAIL E

Typical @ 2 Locations



DETAIL D

Typical @ 2 Locations



SECTION G-G

- Notes:
- Denotes 7/8" φ high-strength bolt.
 - Denotes 1" φ high-strength bolt.
 - U.N.O. denotes Unless Noted Otherwise.
 - Lower Lateral Bracing plates shown in Details C, E and F, shall conform the requirements of M270 Gr. 50W U.N.O.
 - For locations of Details B, C, D, E & F, see Sheet 26 of 79.
 - For Tie Girder Details, see Sheets 41 thru 43 of 79.
 - For Floorbeam Details, see Sheets 54 thru 57 of 79.
 - Lower Lateral Bracing Members shall conform to the requirements of M270 Gr. 50W U.N.O.
 - For dimensions B and C, see Sheet 46 of 79.

I:\rockford\10026802\drawings\modlsheets\5.63.Lower Lateral Bracing Details.dwg

CMT
CRAWFORD, MURPHY & TILLY, INC.
CONSULTING ENGINEERS
License No. 184-000613

HNTB

DESIGNED - PA, JDU, BPD, CJW	REVISED -
DRAWN - GLD	REVISED -
CHECKED - RJK	REVISED -
DATE - 02/04/2011	REVISED -

CITY OF ROCKFORD
MORGAN STREET BRIDGE

LOWER LATERAL BRACING DETAILS
STRUCTURE NO. 101-6108

SCALE: SHEET NO. 62 OF 79 SHEETS STA. 47+00.74 TO STA. 52+63.50

F.A.U. RTE.	SECTION	COUNTY	TOTAL SHEETS	SHEET NO.
5077	99-00493-00-BR	WINNEBAGO	253	188
CONTRACT NO. 85529			FED. ROAD DIST. NO. 2 ILLINOIS FED. AID PROJECT BRM-50591651	