

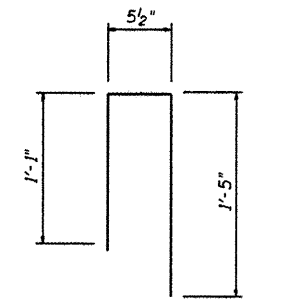
NORTH WALL ELEVATION
(Looking South)

Note: Show Form Liner Textured Surface on all exposed precast MSE wall panels.

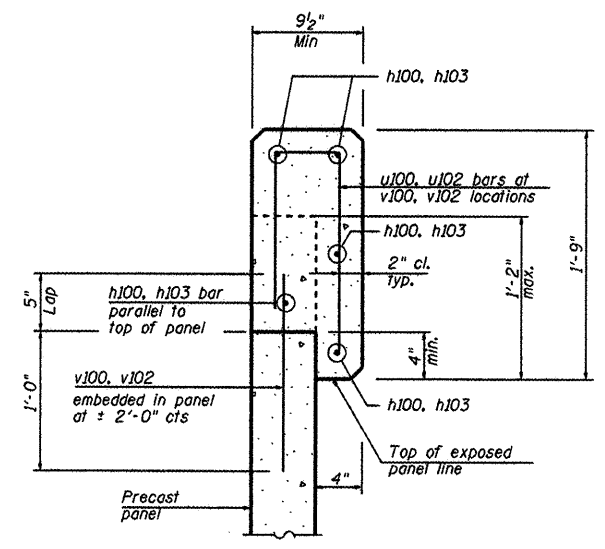
C.I.P. COPING
BILL OF MATERIAL *

Bar	No.	Size	Length	Shape	Wall
h100	10	#4	39'-0"	—	North
h101	5	#4	6'-3"	—	North
h102	10	#4	38'-6"	—	Abutment
h103	10	#4	39'-0"	—	South
h104	5	#4	6'-3"	—	South
u100	43	#4	2'-11 1/2"	—	North
u101	38	#4	2'-11 1/2"	—	Abutment
u102	43	#4	2'-11 1/2"	—	South
v100	43	#4	1'-5"	—	North
v101	38	#4	1'-5"	—	Abutment
v102	43	#4	1'-5"	—	South
Concrete Structures	Cu. Yd.		10.9		
Reinforcing Steel	Pound		1,180		
Concrete Sealer	Sq. Ft.		120		

* For information purposes only. Cost of C.I.P. Coping and Coping Seal Concrete including: Concrete Structures, Reinforcing Steel and Concrete Sealer will be included for payment in the contract unit price for Mechanically Stabilized Earth Retaining Wall.



BAR u100, u101 & u102
MIN BAR LAPS
#4 = 2'-7"



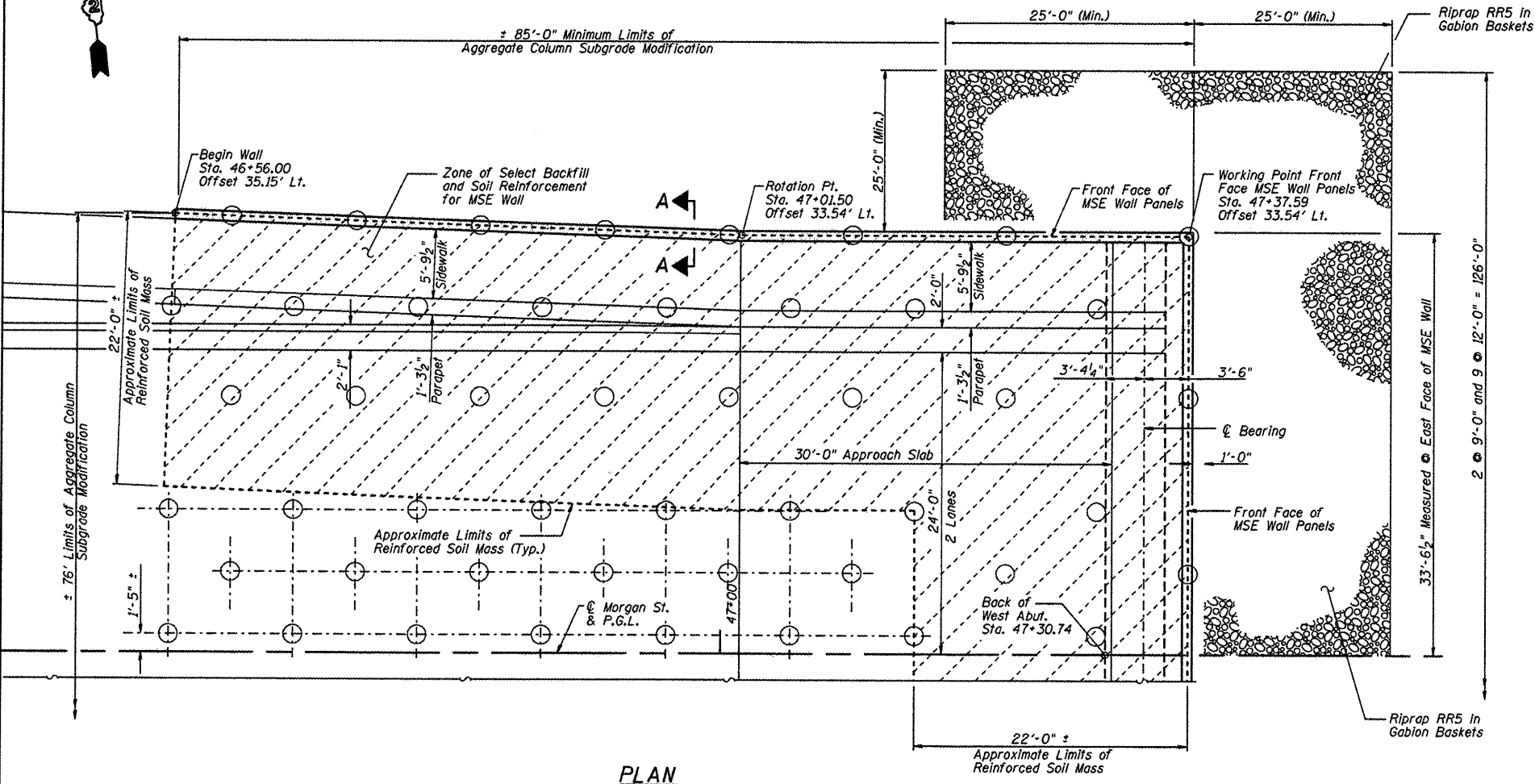
SECTION A-A

AGGREGATE COLUMN GROUND IMPROVEMENT PERFORMANCE CRITERIA

1. Maximum total settlement not to exceed 1 inch (differential settlement 0.6 inch) after completing wall and embankment construction.
2. Bearing Capacity 3,500 psf minimum.
3. Seismic Data:
 - a) Seismic Performance Category (SPC) = A
 - b) Horiz. Bedrock Acceleration Coefficient (A) = 0.033g
 - c) Site Coefficient (S) = 1.2

BILL OF MATERIAL

Mechanically Stabilized Earth Retaining Wall	Sq. Yd.	5,163
Gabions	Cu. Yd.	1,450



PLAN

L:\PROJECTS\0826682\0826682.dwg - NCADL Sheets S. 71 MSE Wall.dgn

CMT
CHAMFORD, MURPHY & TALLY, INC.
CONSULTING ENGINEERS
License No. 64-000613

HNTB

DESIGNED - PA, JDJ, BPD, CJW	REVISED -
DRAWN - GLD	REVISED -
CHECKED - RJK	REVISED -
DATE - 02/04/2011	REVISED -

CITY OF ROCKFORD
MORGAN STREET BRIDGE

MSE WALL DETAILS - III
STRUCTURE NO. 101-6108

SCALE: SHEET NO. 71 OF 79 SHEETS STA. 47+00.74 TO STA. 52+63.50

F.A.J. RTE.	SECTION	COUNTY	TOTAL SHEETS	SHEET NO.
5077	99-00493-00-BR	WINNEBAGO	253	197
FED. ROAD DIST. NO. 2 ILLINOIS			CONTRACT NO. 85529	
FED. AID PROJECT BRM-509165				