

F.A.U. RTE.	SECTION	COUNTY	TOTAL SHEETS	SHEET NO.
	10-00243-01-LS	MCLEAN	15	1
ILLINOIS		CONTRACT NO. 91451		

INDEX OF SHEETS

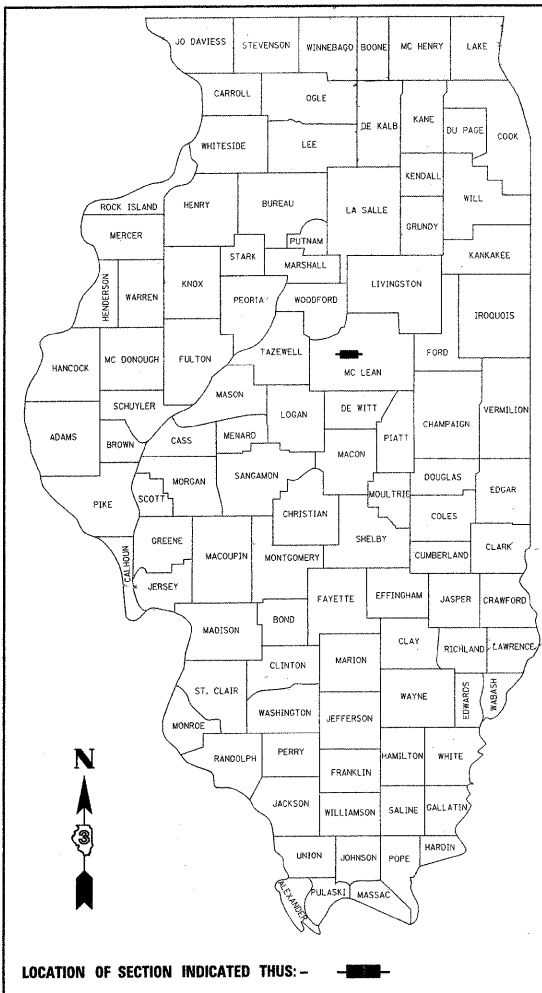
SHEET NO.	DESCRIPTION
1	TITLE SHEET
2	GENERAL NOTES
3	HIGHWAY STANDARDS AND LEGEND
4	SUMMARY OF QUANTITIES
5	SCHEDULE OF QUANTITIES
6-14	LANDSCAPING PLANS
15	LANDSCAPING DETAILS

STATE OF ILLINOIS
DEPARTMENT OF TRANSPORTATION
DIVISION OF HIGHWAYS
**PLANS FOR PROPOSED
STREET IMPROVEMENTS**

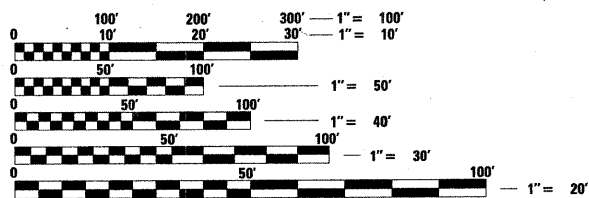
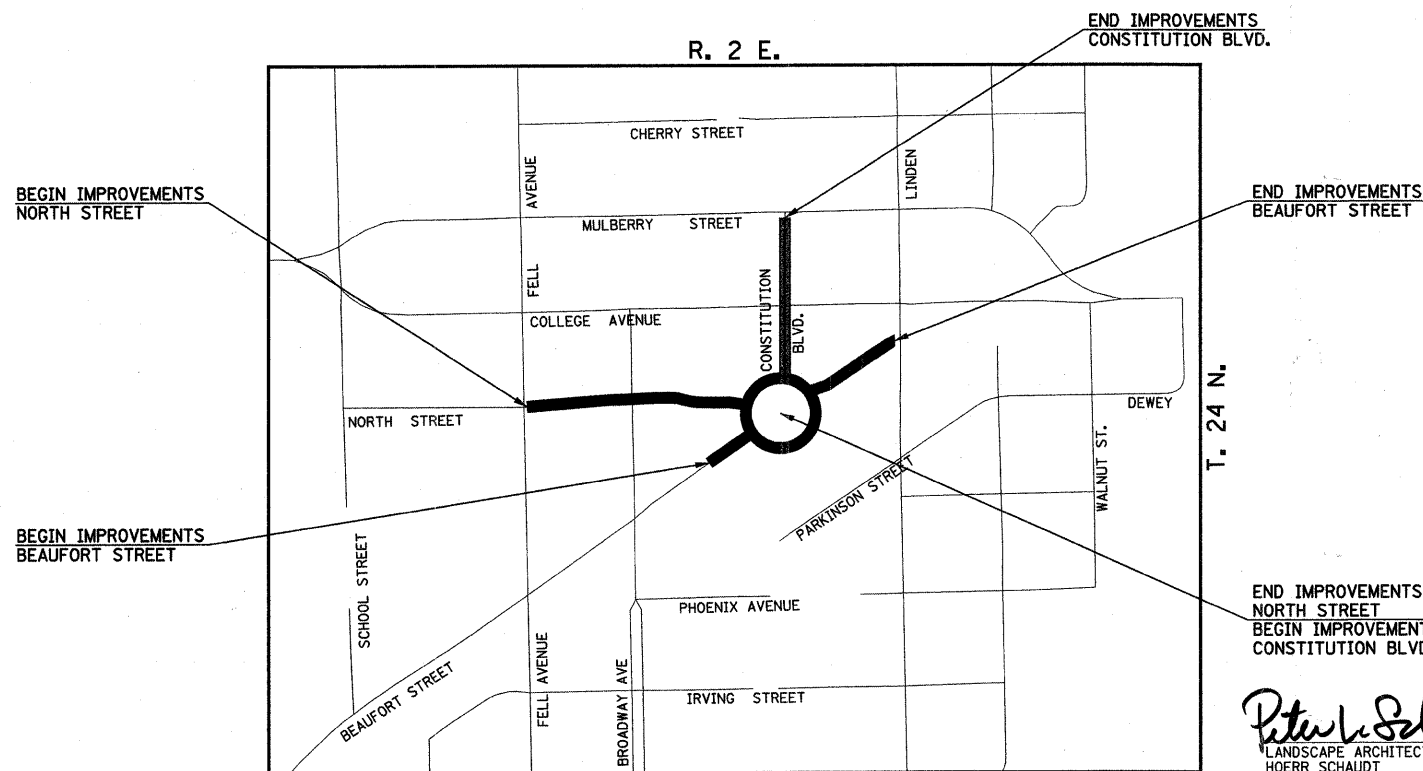
PLAN 1 INCH = 20 FEET
 PROFILE HORIZ. 1 INCH = 20 FEET
 PROFILE VERT. 1 INCH = 5 FEET
 CROSS SECTIONS HORIZ. 1 INCH = 10 FEET
 CROSS SECTIONS VERT. 1 INCH = 5 FEET

TOWN OF NORMAL
MCLEAN COUNTY, ILLINOIS
SECTION: 10-00243-01-LS
PROJECT NO. TE-00D5(094)
JOB NO. C-95-312-11

UPTOWN NORMAL LANDSCAPE PLANTINGS



ILLINOIS HIGHWAY STANDARD DRAWINGS
(SEE SHEET NO. 3)

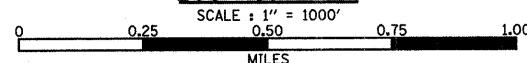


FULL SIZE PLANS HAVE BEEN PREPARED USING STANDARD ENGINEERING SCALES. REDUCED SIZED PLANS WILL NOT CONFORM TO STANDARD SCALES. IN MAKING MEASUREMENTS ON REDUCED PLANS, THE ABOVE SCALES MAY BE USED.

J.U.L.I.E.
JOINT UTILITY LOCATION INFORMATION FOR EXCAVATION
1-800-892-0123 OR 811

CONTRACT NO. 91451

LOCATION MAP

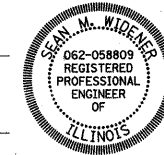
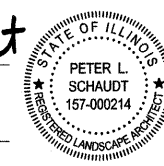


Peter L. Schaudt
LANDSCAPE ARCHITECT
HOERR SCHAUDT
SHEET 6 TO 15

DATE: JAN. 7, 2011
LICENSE EXPIRES 8-31-11

Sean M. Wiedner
PROFESSIONAL ENGINEER
CLARK DIETZ, INC.
SHEET 1 TO 5

DATE: JAN. 7, 2011
LICENSE EXPIRES 11-30-11



TOWN OF NORMAL

APPROVED January 10, 2011
David C. Brown, P.E.
TOWN ENGINEER

PASSED 1/21 20 11
[Signature]
DISTRICT FIVE ENGINEER OF
LOCAL ROADS & STREETS

Releasing For
Limited Review January 21 20 11
[Signature]
DEPUTY DIRECTOR OF HIGHWAYS
REGION THREE ENGINEER

STATE OF ILLINOIS
DEPARTMENT OF TRANSPORTATION

**PRINTED BY THE AUTHORITY
OF THE STATE OF ILLINOIS**

Clark Dietz
ENGINEERS

125 WEST CHURCH STREET
CHAMPAIGN, IL 61820
PHONE : 217.373.8900
FAX : 217.373.8923

PROJECT GENERAL NOTES

- WHEREVER IN THE PLANS OR SPECIFICATIONS THE TERM "STANDARD SPECIFICATIONS" IS USED IT SHALL BE UNDERSTOOD BY THE CONTRACTOR TO MEAN THE "STANDARD SPECIFICATIONS FOR ROAD AND BRIDGE CONSTRUCTION" AS PREPARED BY THE DEPARTMENT OF TRANSPORTATION OF THE STATE OF ILLINOIS AND ADOPTED ON JANUARY 1, 2007.
- ANY REFERENCE TO STANDARDS THROUGHOUT THE PLANS SHALL BE INTERPRETED TO BE THE LATEST STANDARDS OF THE DEPARTMENT AS SHOWN ON SHEET 3.
- IT IS THE CONTRACTOR'S RESPONSIBILITY TO ASCERTAIN EXISTING FIELD CONDITIONS BEFORE BIDDING ON THE PROJECT.
- THE CONTRACTOR SHALL BE AWARE THAT THE CONCRETE CURB EXTENSIONS BETWEEN THE PARKING SPACES AS SHOWN IN THE LANDSCAPE PLAN SHEETS WILL BE REMOVED BY THE TOWN, THEREFORE, NO PLANTING WILL BE REQUIRED IN THESE AREAS.
- THE CONTRACTOR WILL BE REQUIRED TO COMPLY WITH STATE REGULATIONS REGARDING AIR, WATER, AND NOISE POLLUTION.
- THE CONTRACTOR SHALL TAKE CARE NOT TO STORE OR DISPOSE OF DEBRIS OR UNSUITABLE MATERIALS WITHIN LIMITS OF THE IMPROVEMENT AND TAKE CARE TO LIMIT CONSTRUCTION TO WITHIN THE RIGHT-OF-WAY AND EASEMENT AREAS. UNNECESSARY ENCROACHMENTS ONTO PRIVATE OR PUBLIC AREAS WILL NOT BE ALLOWED.
- WHERE SECTION OR SUBSECTION MONUMENTS, BENCHMARKS, OR IRON PIPE MONUMENTS ARE ENCOUNTERED, THE ENGINEER SHALL BE NOTIFIED BEFORE SUCH MONUMENTS ARE REMOVED. THE CONTRACTOR SHALL PROTECT AND CAREFULLY PRESERVE ALL MONUMENTS UNTIL AN ILLINOIS REGISTERED LAND SURVEYOR OR AGENT HAS WITNESSED OR OTHERWISE REFERENCED THEIR LOCATION. THE CONTRACTOR WILL BE RESPONSIBLE FOR HAVING AN ILLINOIS REGISTERED LAND SURVEYOR RE-ESTABLISH ANY MONUMENTS UNNECESSARILY DESTROYED BY HIS OPERATIONS.
- THE CONTRACTOR SHALL COORDINATE CONSTRUCTION ACTIVITIES WITH UTILITY COMPANIES.
- THE CONTRACTOR SHALL BE RESPONSIBLE FOR PROTECTING UTILITY PROPERTY FROM CONSTRUCTION OPERATIONS AS OUTLINED IN ARTICLE 107.31 OF THE STANDARD SPECIFICATIONS. THE JULIE NUMBER IS 800-892-0123. A MINIMUM OF 48 HOURS ADVANCE NOTICE IS REQUIRED.
- UTILITY OWNERS:

TOWN OF NORMAL 100 E. PHOENIX AVE. NORMAL, ILLINOIS 61761 (309)-454-9574	MCLEOD USA 102 EAST SHAFFER ST. FORSYTH, ILLINOIS ZIP 62535 (217) 876-7194
AMEREN IP 501 E. LAFAYETTE ST. BLOOMINGTON, ILLINOIS 61702 (309) 823-9271	VERIZON 2319 W. MARKET ST. BLOOMINGTON, ILLINOIS 61704 (309) 663-3144
NICOR GAS 1844 FERRY ROAD NAPERVILLE, ILLINOIS 60563 (888) 642-6748	COMCAST 1202 W. DIVISION STREET NORMAL, ILLINOIS 61761 (309) 827-4396
- THE TOWN OF NORMAL SHALL BE RESPONSIBLE FOR NOTIFYING THE PUBLIC, THE UNITED STATES POSTAL SERVICE, AND THE EMERGENCY SERVICE AGENCIES OF ALL ROAD CLOSURES AND CHANGES IN THE TRAFFIC CONTROL PLANS. THE CONTRACTOR SHALL NOTIFY THE TOWN OF NORMAL OF ALL ROAD CLOSURES AND DETOURS A MINIMUM OF 48 HOURS IN ADVANCE OF ANY ROAD CLOSURES OR CHANGES SO THAT NOTIFICATION CAN BE GIVEN.
- THE CONTRACTOR SHALL BE RESPONSIBLE FOR CLEANUP OF THE SITE PRIOR TO FINAL ACCEPTANCE IN ACCORDANCE WITH ARTICLE 104.06 OF THE STANDARD SPECIFICATIONS. THIS WORK SHALL INCLUDE CLEANING ALL DRAINAGE FACILITIES OF FOREIGN MATERIALS IN ACCORDANCE WITH ARTICLE 602.15 OF THE STANDARD SPECIFICATIONS. THIS WORK SHALL BE PERFORMED AS DIRECTED BY THE ENGINEER AND NO ADDITIONAL COMPENSATION WILL BE ALLOWED.
- FOR THIS CONTRACT, DESIGNATED REPRESENTATIVES OF THE ENGINEER MAY INCLUDE THE PROJECT LANDSCAPE ARCHITECT AND/OR TOWN OF NORMAL PARKS AND RECREATION STAFF.

EXISTING FIELD CONDITIONS

DUE TO ONGOING DEVELOPMENT IN THE VICINITY OF THIS PROJECT, THE EXISTING TOPOGRAPHIC FEATURES MAY BE DIFFERENT FROM THE FEATURES SHOWN ON THE PLANS. THE CONTRACTOR SHALL NOTIFY THE ENGINEER OF ANY CHANGED FIELD CONDITIONS THAT ARE DISCOVERED PRIOR TO PERFORMING THE WORK. NO ADDITIONAL COMPENSATION WILL BE ALLOWED DUE TO CHANGED FIELD CONDITIONS.

LANDSCAPING GENERAL NOTES

- PLANTS SHALL BE INSTALLED IN EXISTING PLANTING BEDS OR IN PRECAST CONCRETE PLANTERS. THE PLANTING BEDS HAVE BEEN PLANTED PREVIOUSLY WITH TREES, SHRUBS, AND GRASSES TO PREPARE THE SOIL. THIS CONTRACT WILL SUPPLEMENT THESE BEDS WITH PERENNIAL PLANTINGS. WORK SHALL BE PERFORMED SO AS NOT TO DISTURB THE EXISTING PLANTINGS UNLESS AUTHORIZED BY THE ENGINEER.
- ACTUAL LAYOUT OF PLANTINGS AS INDICATED IN THE LANDSCAPING PLANS ARE APPROXIMATE, THE ENGINEER OR DESIGNATED REPRESENTATIVE SHALL CONFIRM ALL PLANT LOCATIONS WITH THE CONTRACTOR PRIOR TO INSTALLATION.
- THE CONTRACTOR SHALL BE RESPONSIBLE FOR BECOMING FAMILIAR WITH THE SURFACE AND SUB-SURFACE CONDITIONS AND SHALL NOT PROCEED WITH WORK UNTIL ALL UNSATISFACTORY CONDITIONS ARE CORRECTED. PLANTS MAY NOT BE INSTALLED INTO SATURATED OR FROZEN SOILS, OR DURING INCLIMATE WEATHER SUCH AS RAIN, SNOW, OR EXCESSIVELY WINDY CONDITIONS.
- CONTRACTOR SHALL BE AWARE OF EXISTING IRRIGATION SYSTEMS WITHIN THE PROJECT LIMITS. THE CONTRACTOR SHALL BE RESPONSIBLE FOR ANY UNNECESSARY DAMAGES AS DETERMINED BY THE ENGINEER. IF DAMAGES OCCUR, THE CONTRACTOR SHALL BE RESPONSIBLE FOR REPAIRING THE IRRIGATION TO THE SATISFACTION OF THE ENGINEER AT THE CONTRACTORS EXPENSE. NO ADDITIONAL COMPENSATION WILL BE ALLOWED. THE USE OF THE EXISTING IRRIGATION SYSTEM WILL BE ALLOWED FOR WATERING THE PLANTS AFTER INSTALLATION AND SHALL BE COORDINATED WITH THE TOWN OF NORMAL.
- THE CONTRACTOR SHALL BE RESPONSIBLE FOR ALL PREPARATION, QUALITY ASSURANCE, AND CARE OF PLANTS BEFORE INSTALLATION, IN ACCORDANCE WITH THE SPECIAL PROVISIONS. PLANTS SHALL BE SUBJECT TO PRE-DELIVERY INSPECTIONS AND APPROVALS AND IN THE CASE OF REJECTION THE CONTRACTOR SHALL BE RESPONSIBLE FOR REPLACEMENT OR SUBSTITUTION WITH WRITTEN APPROVAL BY THE ENGINEER.
- THE CONTRACTOR SHALL BE RESPONSIBLE FOR STAKING ALL PLANTING AREAS AND NOTIFYING JULIE (1-800-892-0123) PRIOR TO EXCAVATION TO DETERMINE THE LOCATION OF UNDERGROUND UTILITIES TO AVOID POSSIBLE DAMAGE.
- THE CONTRACTOR SHALL BE RESPONSIBLE FOR ALL PREPARATION OF THE SITE AND INSTALLATION OF PLANTS IN ACCORDANCE WITH THE SPECIAL PROVISIONS, INCLUDING PROTECTION OF PLANTS AND MATERIALS DURING CONSTRUCTION AND THE GUARANTEE PERIODS.
- THE CONTRACTOR SHALL BE RESPONSIBLE FOR FINISHING OF THE AREA, INCLUDING MULCHING, WEED CONTROL, WATERING, AND CLEAN UP IN ACCORDANCE WITH THE SPECIAL PROVISIONS. THE TOWN OF NORMAL WILL PROVIDE MULCHING MATERIAL TO THE CONTRACTOR.
- THE CONTRACTOR SHALL GUARANTEE ALL PLANTS IN ACCORDANCE WITH THE SPECIAL PROVISIONS.

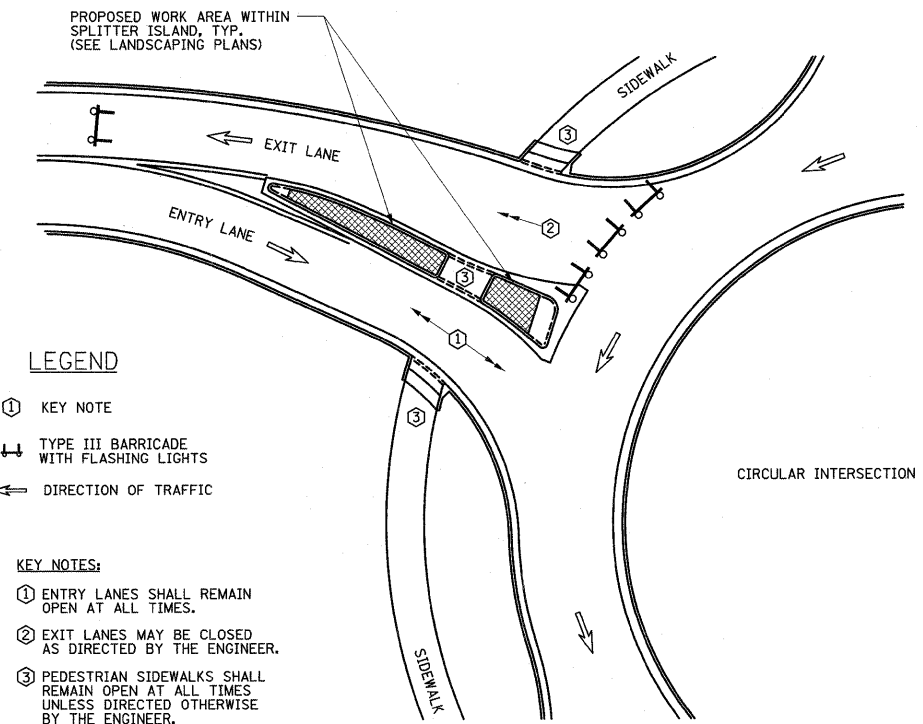
REMOVAL GENERAL NOTES

- THE CONTRACTOR SHALL BE RESPONSIBLE ANY NECESSARY REMOVALS AS PART OF PREPARING THE PLANTING BEDS. PREPARATION OF PLANTING BEDS AND ASSOCIATED REMOVAL OF MATERIAL SHALL BE INCLUDED IN THE VARIOUS PLANTING PAY ITEMS AND NO ADDITIONAL COMPENSATION WILL BE ALLOWED (SEE SPECIAL PROVISIONS).
- THE CONTRACTOR SHALL STOCKPILE EXISTING MULCHING MATERIAL AS DIRECTED BY THE ENGINEER. THIS MATERIAL MAY BE REUSED AFTER PLANTINGS ARE COMPLETE IF THE MATERIAL IS DETERMINED ACCEPTABLE BY THE ENGINEER. ANY ACCEPTABLE MULCH THAT DOES NOT GET REUSED SHALL REMAIN TOWN OF NORMAL PROPERTY. THE REMOVAL, STOCKPILING AND REINSTALLATION OF MULCH SHALL BE INCLUDED IN THE VARIOUS PLANTING PAY ITEMS AND NO ADDITIONAL COMPENSATION WILL BE ALLOWED.
- THE CONTRACTOR WILL BE HELD RESPONSIBLE FOR ANY UNNECESSARY DAMAGE TO TREES, SHRUBS, IRRIGATION SYSTEMS, OR LANDSCAPING AS DETERMINED BY THE ENGINEER.

MAINTENANCE OF TRAFFIC GENERAL NOTES

- TRAFFIC CONTROL AND PROTECTION SHALL BE IN ACCORDANCE WITH THE APPLICABLE PORTIONS OF THE STANDARD SPECIFICATIONS FOR ROAD AND BRIDGE CONSTRUCTION; THE APPLICABLE GUIDELINES CONTAINED IN THE MANUAL ON UNIFORM TRAFFIC CONTROL DEVICES FOR STREETS AND HIGHWAYS, STANDARDS 701301, 701501, 701701, 701801 701901 AND BLR 21, THE STAGE CONSTRUCTION AND MAINTENANCE OF TRAFFIC DETAILS AND THE SPECIAL PROVISIONS.
- TRAFFIC CONTROL AND PROTECTION WILL BE PAID FOR AT THE CONTRACT LUMP SUM PRICE FOR TRAFFIC CONTROL AND PROTECTION, (SPECIAL). THE TRAFFIC CONTROL AND PROTECTION INSTALLATION FOR EACH WORK AREA WILL NOT BE PAID FOR SEPARATELY AND ADDITIONAL TRAFFIC CONTROL DEVICES AND SIGNS MAY BE REQUIRED AS DETERMINED BY THE ENGINEER. NO ADDITIONAL COMPENSATION WILL BE ALLOWED.
- TRAFFIC CONTROL SURVEILLANCE WILL NOT BE PAID FOR SEPARATELY FOR THIS PROJECT. THE CONTRACTOR SHALL BE RESPONSIBLE FOR INSPECTING AND MAINTAINING ALL TRAFFIC CONTROL DEVICES AT ALL TIMES INCLUDING NIGHTTIME, WEEKENDS, AND ANY TIME WORKERS ARE NOT PRESENT. THIS WORK SHALL BE PERFORMED IN ACCORDANCE WITH THE RECURRING SPECIAL PROVISION LRS3. THE COST OF ALL LABOR, MATERIALS, AND EQUIPMENT REQUIRED FOR THE INSPECTION AND MAINTENANCE OF THE TRAFFIC CONTROL DEVICES SHALL BE INCLUDED IN THE LUMP SUM PRICE OF TRAFFIC CONTROL AND PROTECTION, (SPECIAL).
- THE FOLLOWING TRAFFIC CONTROL STANDARDS ARE THE MINIMUM REQUIREMENTS FOR THE TRAFFIC CONTROL FOR THIS PROJECT.

STANDARD	APPLICATION
701301	SHORT TERM LANE CLOSURE FOR LANDSCAPING WORK, DEBRIS CLEAN UP ETC.
701501 & 701701	LANE CLOSURE FOR LANDSCAPING WORK
701801	SIDEWALK CLOSURES WITHIN PROJECT LIMITS
701901	TRAFFIC CONTROL DEVICES
BLR 21	ROAD CLOSURES NEAR CIRCULAR INTERSECTION
- SIDEWALKS SHALL REMAIN OPEN AT ALL TIMES. PARTIAL CLOSURES WILL BE ALLOWED AS APPROVED BY THE ENGINEER. THE CONTRACTOR SHALL MAINTAIN A MINIMUM SIDEWALK WIDTH OF FOUR FEET (4') FOR PEDESTRIAN TRAFFIC. ACCESS TO BUSINESSES SHALL REMAIN OPEN AT ALL TIMES.
- SHORT TERM LANE CLOSURES FOR LOADING/UNLOADING OPERATIONS MAY BE ALLOWED AS APPROVED BY THE ENGINEER.
- THE USE OF ADJACENT/NEARBY PARKING SPACES WILL BE PERMITTED FOR STORAGE/STAGING OF MATERIALS AS APPROVED BY THE ENGINEER. CARE SHOULD BE TAKEN WHEN PLACING SOIL AND OTHER MATERIALS ON PAVEMENT SURFACES. THE CONTRACTOR SHALL BE RESPONSIBLE FOR CLEANING SURFACES AFTER CONSTRUCTION ACTIVITIES INCLUDING REMOVAL OF ANY FOREIGN MATERIAL FROM ADJACENT DRAINAGE STRUCTURES. THIS WORK SHALL BE INCLUDED IN THE VARIOUS LANDSCAPING ITEMS AND NO ADDITIONAL COMPENSATION WILL BE ALLOWED.
- ALL ENTRY LANES TO THE CIRCULAR INTERSECTION SHALL REMAIN OPEN AT ALL TIMES, UNLESS DIRECTED OTHERWISE BY THE ENGINEER. LANES EXITING THE CIRCULAR INTERSECTION MAY BE CLOSED ONE AT A TIME AS SHOWN BELOW OR AS DIRECTED BY THE ENGINEER.



MAINTENANCE OF TRAFFIC AT CIRCULAR INTERSECTION DETAIL

ENTRY AND EXIT LOCATIONS:
 BEAUFORT STREET, NORTH STREET AND CONSTITUTION BOULEVARD

FILE NAME = p:\N0240094\Plans\Sheets\ 02 Cover.dgn PLOT DATE = 1/10/2011 11:07:09 AM	DESIGNED - K.L.R. DRAWN - K.L.R. CHECKED - S.M.W. DATE - 1-11	REVISED - REVISED - REVISED - REVISED -	STATE OF ILLINOIS DEPARTMENT OF TRANSPORTATION	GENERAL NOTES SCALE : NONE SHEET NO. 2 OF 15 SHEETS STA. TO STA.	F.A.U. RTE. SECTION 10-00243-01-LS	COUNTY MCLEAN	TOTAL SHEETS 15	SHEET NO. 2	CONTRACT NO. 91451 FED. ROAD DIST. NO. ILLINOIS FED. AID PROJECT
	TOWN OF NORMAL SECTION NO. 10-00243-01-LS MCLEAN COUNTY								

ILLINOIS HIGHWAY STANDARD DRAWINGS

000001-06 STANDARDS SYMBOLS, ABBREVIATIONS, AND PATTERNS
 701301-04 LANE CLOSURE, 2L, 2W SHORT TIME OPERATIONS
 701501-06 URBAN LANE CLOSURE, 2L, 2W UNDIVIDED
 701701-07 URBAN LANE CLOSURE, MULTILANE INTERSECTION
 701801-04 LANE CLOSURE, MULTILANE, 1W OR 2W CROSSWALK OR SIDEWALK CLOSURE
 701901-01 TRAFFIC CONTROL DEVICES
 BLR 21-8 TYPICAL APPLICATION OF TRAFFIC CONTROL DEVICES FOR CONSTRUCTION ON RURAL LOCAL HIGHWAYS

LEGEND

EXISTING		PROPOSED	EXISTING		PROPOSED
—W—	WATER LINE	—W16"—	△	MONUMENT	
—G—	GAS LINE		•	IRON PIN/PIPE FOUND	
—OHE—	OVERHEAD ELECTRIC		⊗	RIGHT-OF-WAY MARKER	
—UGE—	UNDERGROUND ELECTRIC		⊕	SOIL BORING	
—OHT—	OVERHEAD TELEPHONE		⊗	TRAFFIC SIGNAL CONTROL BOX	⊗
—UGT—	UNDERGROUND TELEPHONE		⊕	TRAFFIC SIGNAL POST	⊕
—CATV—	CABLE TELEVISION		⊗	TRAFFIC SIGNAL MAST ARM	⊗
—COM—	COMMUNICATION LINE		⊕	PEDESTRIAL PUSH BUTTON POST	⊕
—FO—	FIBER OPTIC LINE		⊗	TRAFFIC SIGNAL HANDHOLE	⊗
—STM—	STEAM LINE		⊕	TRAFFIC SIGNAL JUNCTION BOX	⊕
—	FORCE MAIN		⊗	RR CROSSING GATE	⊗
—	SANITARY SEWER	—	⊕	RR FLASHING SIGNAL	⊕
—	STORM SEWER	—	⊗	RR CROSSBUCK	⊗
—	STORM SEWER WATER MAIN QUALITY	—	⊕	STREET SIGN	⊕
⊗	INLET OR CATCH BASIN	•	⊗	TRAFFIC SIGN	⊗
⊕	MANHOLE	⊕	⊕	DELINEATOR	⊕
⊗	UTILITY WARNING SIGN		⊗	PARKING LOT LIGHT	⊗
⊗	SERVICE BOX SHUTOFF		⊕	YARD LIGHT	⊕
⊗	VALVE	⊗	⊗	MAILBOX	⊗
⊗	WATER MANHOLE		⊕	PARKING METER	⊕
⊗	WATER METER		⊗	IRRIGATION CONTROL BOX	⊗
⊗	FIRE HYDRANT	⊗	⊕	IRRIGATION HEAD	⊕
⊗	GAS METER		⊗	TANK FILLER CAP	⊗
⊗	GAS REGULATOR		⊕	INSPECTION WELL	⊕
⊗	GAS VENT PIPE		⊗	CLEANOUT	⊗
⊗	ELECTRIC MANHOLE		⊕	DOWNSPOUT	⊕
⊗	ELECTRIC METER		⊗	BOLLARD	⊗
⊗	ELECTRIC PEDESTAL		⊕	FENCE POST	⊕
⊗	ELECTRIC JUNCTION BOX	⊗	⊗	GATE POST	⊗
⊗	POWER POLE		⊕	FLAG POLE	⊕
⊗	POWER POLE W/LIGHT		⊗	FLOOD LIGHT	⊗
⊗	POWER POLE W/TRANSFORMER		⊕	TREE STUMP	⊕
⊗	ROADWAY LIGHT CONTROLLER	⊗	⊗	BUSH	⊗
⊗	ROADWAY STREET LIGHT	⊗	⊕	CONIFEROUS TREE	⊕
⊗	ORNAMENTAL STREET LIGHT		⊗	DECIDUOUS TREE	⊗
⊗	GUY POLE		⊕	PROPERTY PARCEL NUMBER	⊕
⊗	GUY WIRE		⊗	HOUSE ADDRESS NUMBER	⊗
⊗	TELEPHONE POLE		⊕		
⊗	TELEPHONE MANHOLE		⊗		
⊗	TELEPHONE PEDESTAL		⊕		
⊗	PEDESTAL PAY PHONE		⊗		
⊗	PHONE BOOTH		⊕		

SEE UTILITY AND LANDSCAPE PLAN SHEETS FOR LEGEND ITEMS SPECIFIC TO THE RESPECTIVE SHEETS

FILE NAME = p:\NO240094\Plans\Sheets\ 03 Stds Legend.dgn	DESIGNED - K.L.R.	REVISED -	STATE OF ILLINOIS DEPARTMENT OF TRANSPORTATION	HIGHWAY STANDARDS AND LEGEND			F.A.U. RTE.	SECTION	COUNTY	TOTAL SHEETS	SHEET NO.
PLOT DATE = 1/10/2011 11:07:23 AM	DRAWN - K.L.R.	REVISED -		SCALE : NONE	SHEET NO. 3 OF 15 SHEETS	STA. TO STA.	10-00243-01-LS	MCLEAN	15	3	
	CHECKED - S.M.W.	REVISED -									
	DATE - 1-11	REVISED -									
			TOWN OF NORMAL	SECTION NO. 10-00243-01-LS	MCLEAN COUNTY	CONTRACT NO. 91451		ILLINOIS FED. AID PROJECT			

SUMMARY OF QUANTITIES

CODE NO.	ITEM	CONSTRUCTION CODE	0031
67100100	MOBILIZATION	LSUM	1
• K0012980	PERENNIAL PLANTS, ORNAMENTAL TYPE, QUART POT	UNIT	1.80
• K0012990	PERENNIAL PLANTS, ORNAMENTAL TYPE, GALLON POT	UNIT	65.73
• K0012992	PERENNIAL PLANTS, ORNAMENTAL TYPE, 2 GALLON POT	UNIT	0.61
• X7010216	TRAFFIC CONTROL AND PROTECTION, (SPECIAL)	LSUM	1
• XX008415	CONCRETE PLANTER BASE	EACH	10
• XX008417	PLANTER - 48" DIAMETER	EACH	10

• SEE SPECIAL PROVISIONS

FILE NAME = p:\N0240094\Plans\sheets\ 04 S00.dgn PLOT DATE = 1/10/2011 11:07:36 AM	DESIGNED - K.L.R. DRAWN - K.L.R. CHECKED - S.M.W. DATE - 1-11	REVISED - REVISED - REVISED - REVISED -	STATE OF ILLINOIS DEPARTMENT OF TRANSPORTATION	SUMMARY OF QUANTITIES	F.A.U. RTE. SECTION 10-00243-01-LS COUNTY MCLEAN TOTAL SHEETS 15 SHEET NO. 4 CONTRACT NO. 91451	SCALE : NONE SHEET NO. 4 OF 15 SHEETS STA. TO STA. FED. ROAD DIST. NO. ILLINOIS FED. AID PROJECT
---	--	--	---	-----------------------	--	---

SCHEDULE OF QUANTITIES

PERENNIAL PLANTINGS							LOCATION					TOTAL QTY
Key	Botanic Name	Common Name	Size	Spacing	Mature Size	Unit	North St.	Constitution Blvd.	E. Beaufort St.	W. Beaufort St.	Temporary	
AMS	Achillea x 'Moonshine'	Moonshine Yarrow	1 Gallon Pot	18"	18"h x 18"s	Each	54	—	108	—	—	162
AWL	Aster 'Wood's Light Blue'	Wood's Light Blue Aster	1 Gallon Pot	12"	15"h x 12"s	Each	291	96	53	—	—	440
CCF	Caryopteris x clandonensis 'petit bleu'	Bluebeard Petit Bleu	2 Gallon Pot	24"	24"h x 24"s	Each	40	12	9	—	—	61
EPK	Echinacea purpurea 'Kim's Knee High'	Kim's Knee High Purple Coneflower	1 Gallon Pot	12"	18"h 12"s	Each	71	—	—	—	37	108
ESR	Echinacea 'Sundown'	Sunset Orange Coneflower	1 Gallon Pot	12"	30"h x 12"s	Each	267	45	72	—	31	415
HBS	Hemerocallis 'Fragrant Returns'	Black Eyed Stella Daylily	1 Gallon Pot	12"	24"h x 12"s	Each	41	—	—	—	—	41
IGR	Iris germanica 'Breakers'	Royal Knight German Iris	1 Gallon Pot	18"	24"h x 18"s	Each	68	31	43	—	17	159
IPV	Iris psudacorus 'Variegatus'	Variegated Yellow Flag Iris	1 Gallon Pot	18"	18"h x 18"s	Each	28	36	45	—	42	151
ISC	Iris siberica 'Caeser's Brother'	Caeser's Brother Siberian Iris	1 Gallon Pot	18"	24"h x 18"s	Each	57	41	49	—	—	147
ISS	Iris siberica 'Sky Wings'	Sky Wings siberian Iris	1 Gallon Pot	18"	24"h x 18"s	Each	30	33	59	—	—	122
LSK	Liatis spicata 'Kobold'	Kobold Gayfeather	1 Gallon Pot	12"	24"h x 12"s	Each	77	131	130	87	—	425
LSS	Leucanthemum x superbum 'Highland White Dream'	Highland White Dream Shasta Daisy	1 Gallon Pot	18"	24"h x 18"s	Each	3	—	—	—	—	3
RFG	Rudbeckia fulgida 'Goldstrum'	Black-eyed Susan	1 Gallon Pot	12"	24"h x 12"s	Each	84	25	—	—	10	119
SAF	Sedum 'Autumn Fire'	Autumn Fire Sedum	1 Gallon Pot	12"	18"h x 12"s	Each	238	98	115	—	33	484
SCB	Scabiosa columbaria 'Butterfly Blue'	Butterfly Blue Pincushion	1 Gallon Pot	12"	12"h x 12"s	Each	27	—	100	—	—	127
SNM	Salvia nemorosa 'May Night'	May Night Salvia	1 Gallon Pot	12"	18"h x 12"s	Each	285	223	141	137	—	786
VSG	Veronica spicata 'Giles Van Hess'	Giles Van Hess Speedwell	1 Gallon Pot	12"	15"h x 12"s	Each	113	—	—	—	209	322
VSR	Perovskia atriplicifolia 'Little Spire'	Perovskia 'Little Spire'	1 Gallon Pot	12"	18"h x 20"x	Each	347	254	125	—	—	726
SUBTOTALS:							2121	1025	1049	224	379	4798

GROUNDCOVER PLANTINGS							LOCATION					TOTAL QTY
Key	Botanic Name	Common Name	Size	Spacing	Mature Size	Unit	North St.	Constitution Blvd.	E. Beaufort St.	W. Beaufort St.	Temporary	
LSP	Liriope spicata	Creeping Lily-turf	1 Gallon Pot	12" o.c.	12"h x 12"s	Each	395	247	226	—	—	868
LMB	Liriope muscari 'Big Blue'	Big Blue' Lily-turf	1 Gallon Pot	12" o.c.	12"h x 18"s	Each	239	241	198	—	230	908
SUBTOTALS:							634	488	424	—	230	1776

PERENNIAL PLANTER PLANTS							LOCATION					TOTAL QTY
Key	Botanic Name	Common Name	Size	Spacing	Mature Size	Unit	North St.	Constitution Blvd.	E. Beaufort St.	W. Beaufort St.	Temporary	
ASW	Artemisia schmidtiana 'Silver Mound'	Silver Mound Wormwood	1 Gallon Pot	12"	12"h x 18"s	Each	50	—	—	—	—	50
LES	Leucanthemum x superbum 'Highland White Dream'	Highland White Dream Shasta Daisy	1 Gallon Pot	18"	24"h x 18"s	Each	10	—	—	—	—	10
PSB	Phlox subulata 'Emerald Blue'	Emerald Blue Creeping Phlox	1 Quart Pot	12" o.c.	4"h x 12"s	Each	180	—	—	—	—	180
SUBTOTALS:							240	—	—	—	—	240

K0012980
PERENNIAL PLANTS ORNAMENTAL
QUART POT

LOCATION	UNIT
PERENNIAL PLANTER PLANTS AT VARIOUS LOCATIONS (SEE PLANS)	1.80
TOTAL	1.80

K0012990
PERENNIAL PLANTS ORNAMENTAL
GALLON POT

LOCATION	UNIT
PERENNIAL PLANTINGS AT VARIOUS LOCATIONS (SEE PLANS)	47.37
GROUNDCOVER PLANTINGS AT VARIOUS LOCATIONS (SEE PLANS)	17.76
PERENNIAL PLANTER PLANTS AT VARIOUS LOCATIONS (SEE PLANS)	0.60
TOTAL	65.73

*5000300
PERENNIAL PLANTS ORNAMENTAL
2 GALLON POT

LOCATION	UNIT
PERENNIAL PLANTINGS AT VARIOUS LOCATIONS (SEE PLANS)	0.61
TOTAL	0.61

XX008415
CONCRETE
PLANTER BASE

LOCATION	EACH
NORTH STREET AND BROADWAY AVENUE INTERSECTION	
NW CORNER	1
NE CORNER	1
SW CORNER	1
SE CORNER	1
NORTH STREET	6
TOTAL	10

XX008417
PLANTER
48" DIAMETER

LOCATION	EACH
NORTH STREET AND BROADWAY AVENUE INTERSECTION	
NW CORNER	1
NE CORNER	1
SW CORNER	1
SE CORNER	1
NORTH STREET	6
TOTAL	10

FILE NAME = p:\N0240094\Plans\sheets\ 05 Schedule of QTY.dgn
PLOT DATE = 1/10/2011 11:07:50 AM

DESIGNED - K.L.R.	REVISED -
DRAWN - K.L.R.	REVISED -
CHECKED - S.M.W.	REVISED -
DATE - 1-11	REVISED -

STATE OF ILLINOIS
DEPARTMENT OF TRANSPORTATION

SCHEDULE OF QUANTITIES

SCALE : NONE SHEET NO. 5 OF 15 SHEETS STA. TO STA.

F.A.U. RTE.	SECTION	COUNTY	TOTAL SHEETS	SHEET NO.
	10-00243-01-LS	MCLEAN	15	5
FED. ROAD DIST. NO. ILLINOIS FED. AID PROJECT			CONTRACT NO. 91451	

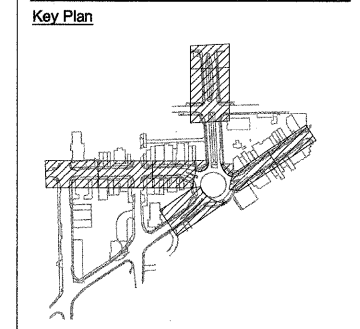
F.A.U. RTE.	SECTION	COUNTY	TOTAL SHEETS	SHEET NO.
—	10-00243-01-LS	MCLEAN	15	6
CONTRACT NO. 91451				
ILLINOIS FED. AID PROJECT				

Client
Town of Normal
 100 E. Phoenix Avenue
 Normal, IL 61761-0589
 Contact: Wayne Aldrich
 Phone: 309-454-9760

Landscape Architect
HOERR SCHAUDT
 landscape architects
 850 West Jackson Blvd., Suite 800
 Chicago, IL 60607
 Contact: Rick Reineke
 Phone: 312.492.8501

Subconsultant:

Subconsultant:



UPTOWN
NORMAL
 Redevelopment Renewal Project
 Additional Planting
 No.

DATE: February 18, 2007
 SCALE: As Noted

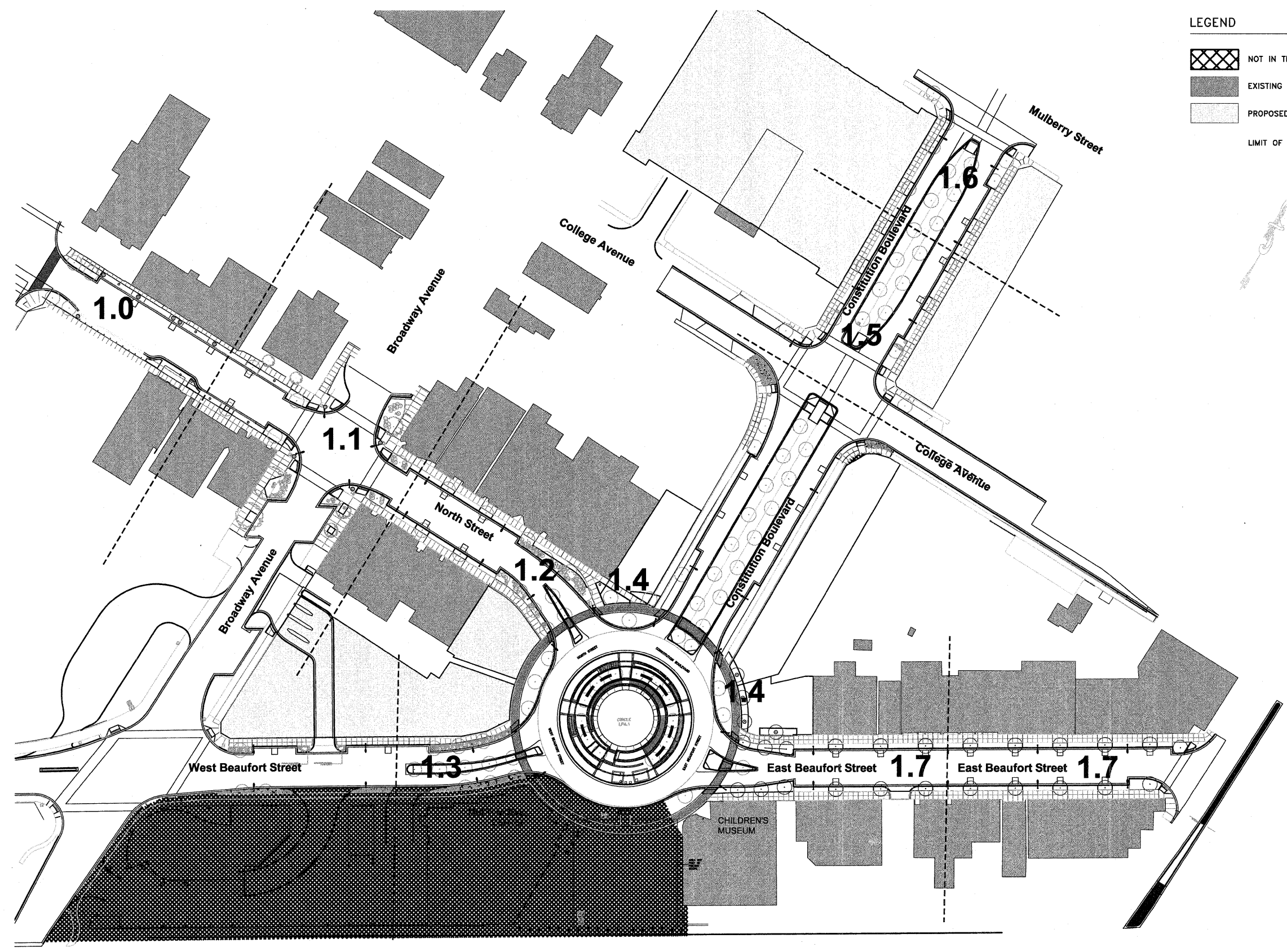
No.	Date	Issue Description
1	12-22-10	Preliminary PSE Submittal
2	01-14-11	Final PSE Submittal

Drawn By: _____ Date: _____
 Project No. 0201.00

Landscape Planting Key Plan
LP 0.0
 SHEET 6 OF 15 SHEETS

LEGEND

- NOT IN THIS CONTRACT
- EXISTING BUILDINGS
- PROPOSED BUILDINGS
- LIMIT OF WORK



1 Landscape Key Plan
 1" = 50' - 0"



F.A.U. NO.	SECTION	COUNTY	TOTAL SHEETS	SHEET NO.
10-00243-01-LS		MCLEAN	15	7
		CONTRACT NO. 91451		
ILLINOIS FED. AID PROJECT				

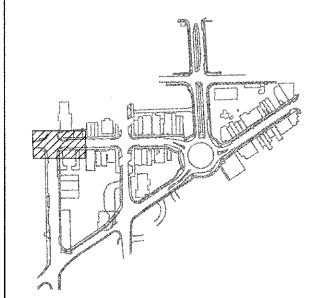
Client
Town of Normal
 100 E. Phoenix Avenue
 Normal, IL 61781-0589
 Contact: Wayne Aldrich
 Phone: 309-454-9780

Landscape Architect
HGERR SCHAUDT
 landscape architects
 850 West Jackson Blvd., Suite 800
 Chicago, IL 60607
 Contact: Rick Reineke
 Phone: 312.492.6501

Subconsultant:

Subconsultant:

Key Plan



Redevelopment Renewal Project
Additional Planting

No.
 DATE: February 18, 2007
 SCALE: As Noted

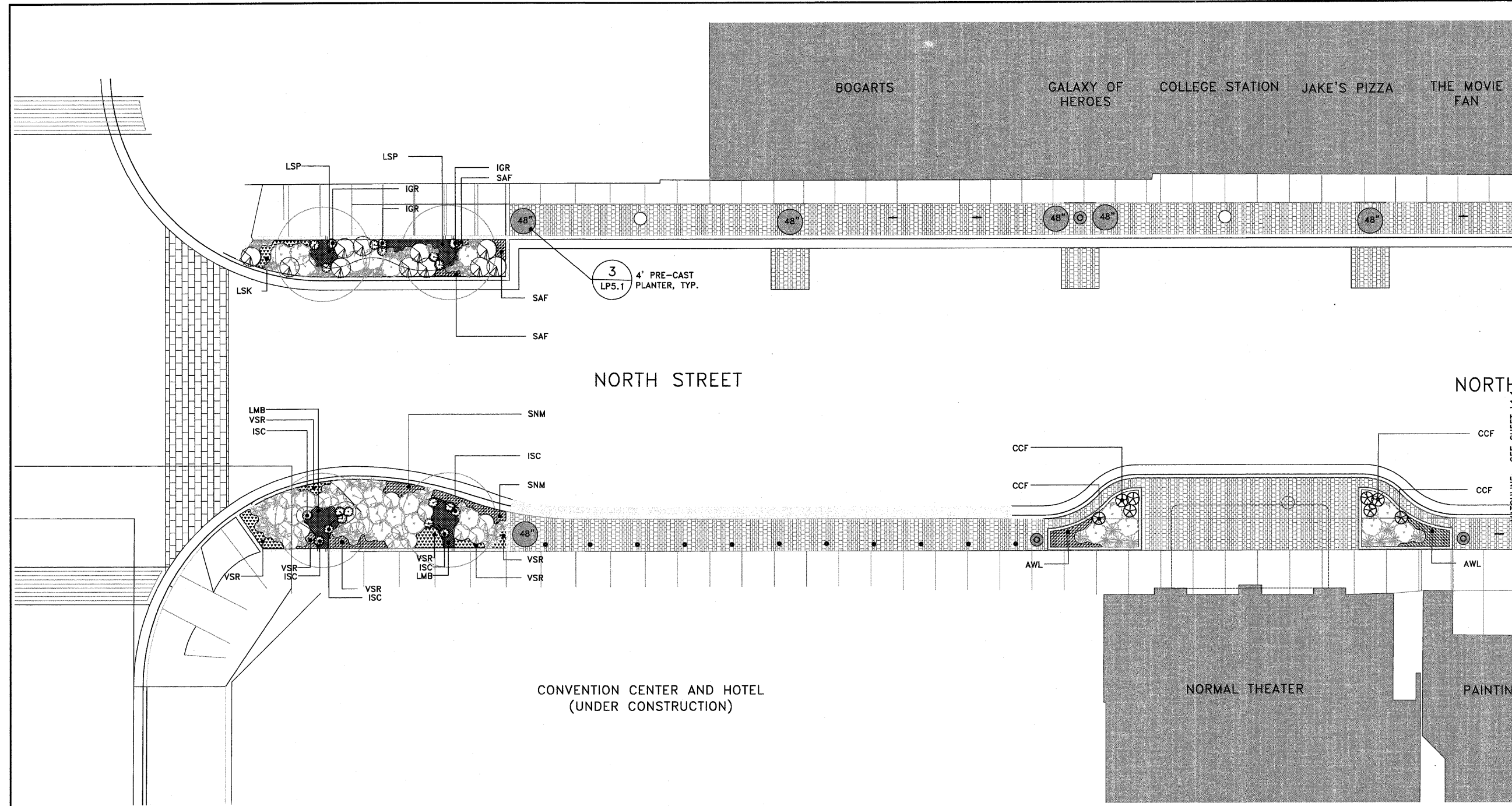
No.	Date	Issue Description
1	12-22-10	Preliminary PSE Submittal
2	01-14-11	Final PSE Submittal

Drawn By:
 Project No. 0201.00 Date

North Street
Planting Plan

LP 1.0

SHEET 7 OF 15 SHEETS



1 North Street Planting Plan
 1/8" = 1' - 0"



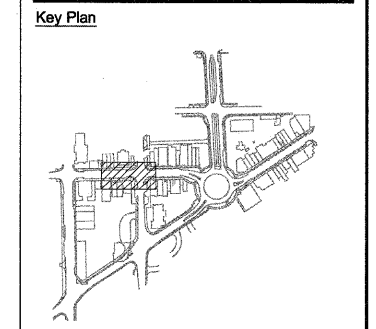
F.A.U. RT.	SECTION	COUNTY	TOTAL SHEETS	SHEET NO.
10-00243-01-LS		MCLEAN	15	8
		CONTRACT NO. 91451		
ILLINOIS FED. AID PROJECT				

Client
Town of Normal
 100 E. Pheonix Avenue
 Normal, IL 61761-0589
 Contact: Wayne Aldrich
 Phone: 309-454-9750

Landscape Architect
HGERR SCHAUDT
 landscape architects
 850 West Jackson Blvd., Suite 800
 Chicago, IL 60607
 Contact: Rick Reineke
 Phone: 312.492.6501

Subconsultant:

Subconsultant:



UPTOWN
NORMAL

Redevelopment Renewal Project
 Additional Planting

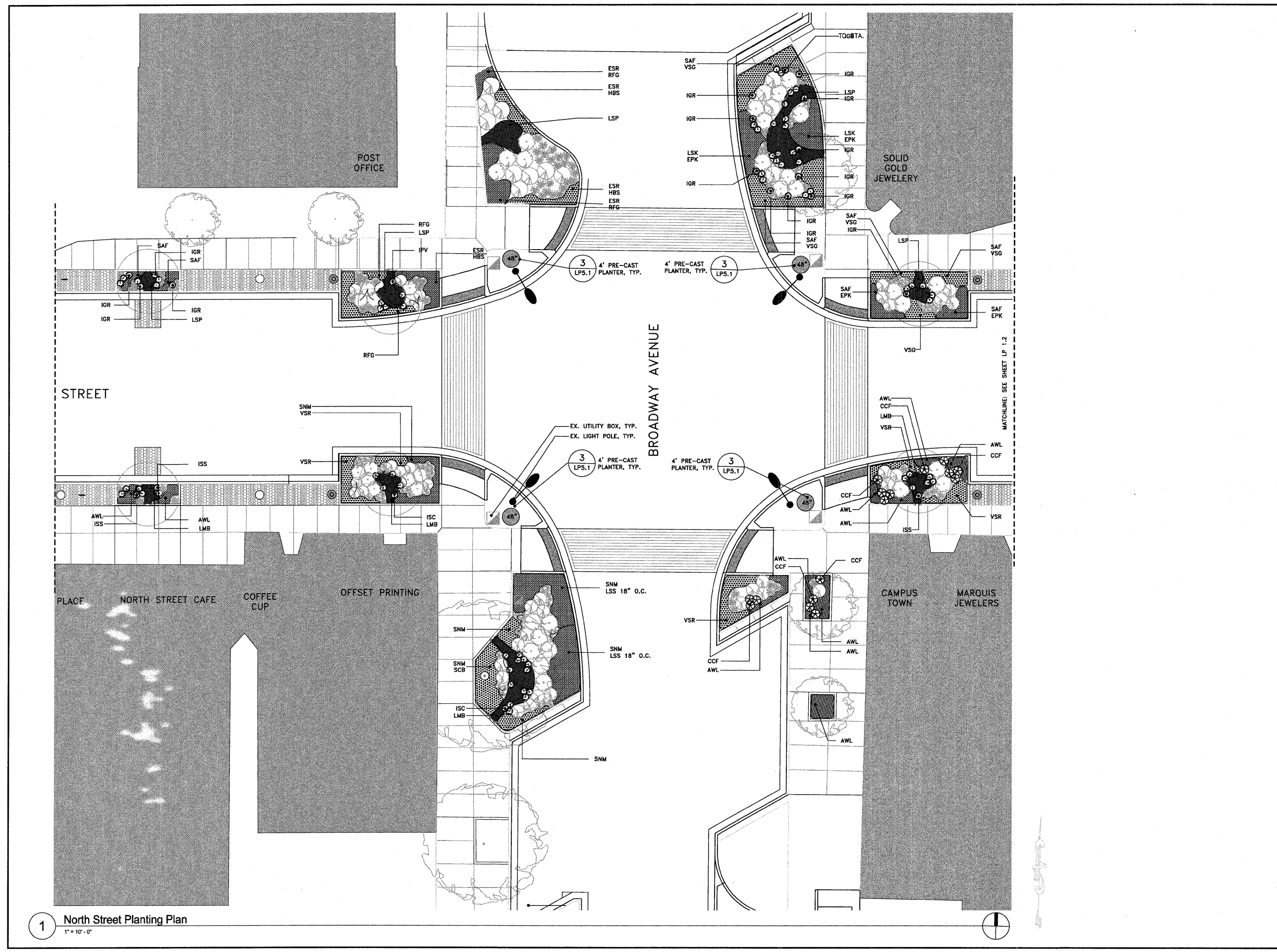
No.
 DATE: February 18, 2007
 SCALE:

No.	Date	Issue Description
1	12-22-10	Preliminary PSE Submittal
2	01-14-11	Final PSE Submittal

Drawn By:
 Project No. 0201.00 Date

**North Street
 Planting Plan**

LP 1.1



1 North Street Planting Plan
 1" = 10'-0"

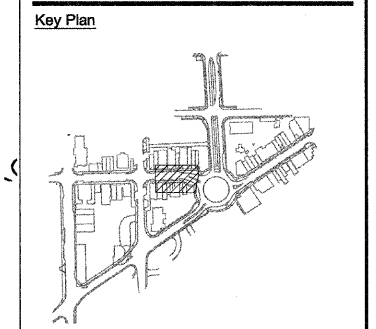
F.A.U. RT#	SECTION	COUNTY	TOTAL SHEETS	SHEET NO.
10-00243-01-LS	MCLEAN	15	9	
CONTRACT NO. 91451				
ILLINOIS FED. AID PROJECT				

Client
Town of Normal
 100 E. Phoenix Avenue
 Normal, IL 61761-0589
 Contact: Wayne Aldrich
 Phone: 309-454-9760

Landscape Architect
HGERR SCHAUDT
 landscape architects
 850 West Jackson Blvd., Suite 800
 Chicago, IL 60607
 Contact: Rick Raineke
 Phone: 312.492.6501

Subconsultant:

Subconsultant:



UPTOWN NORMAL

Redevelopment Renewal Project
 Additional Planting

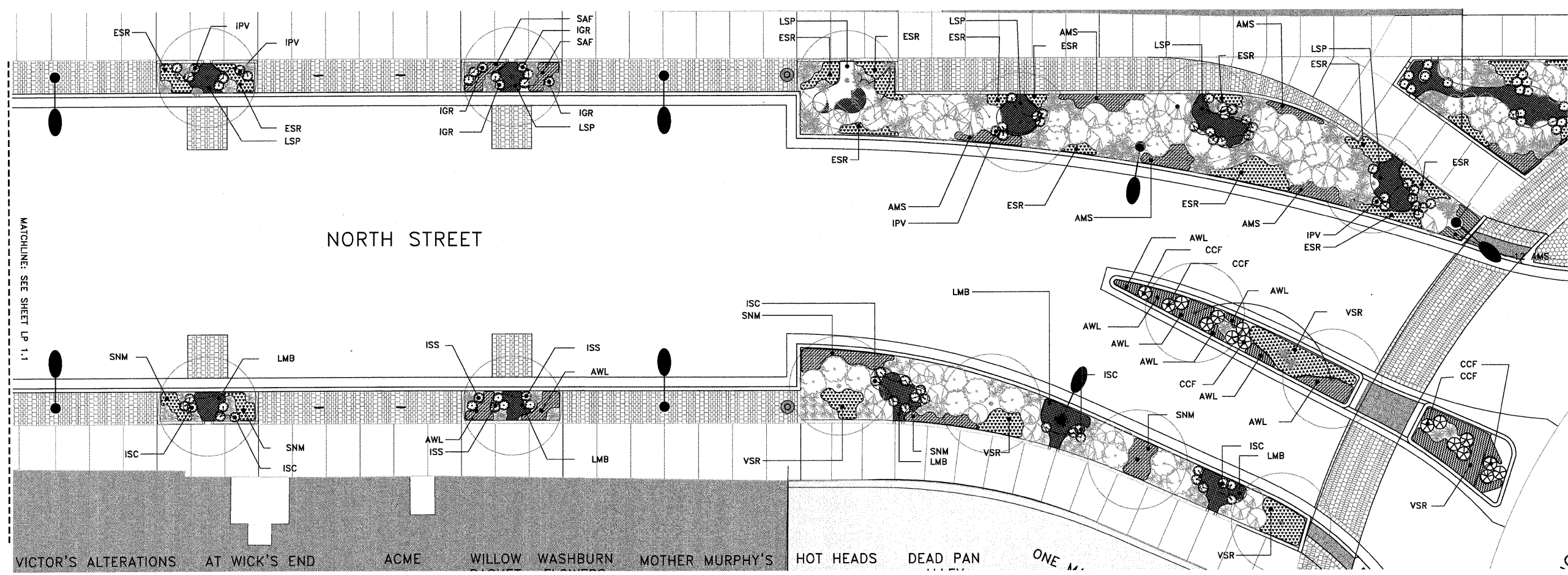
No.
 DATE: February 18, 2007
 SCALE:

No.	Date	Issue Description
1	12-22-10	Preliminary PSE Submittal
2	01-14-11	Final PSE Submittal

Drawn By:
 Project No. 0201.00 Date

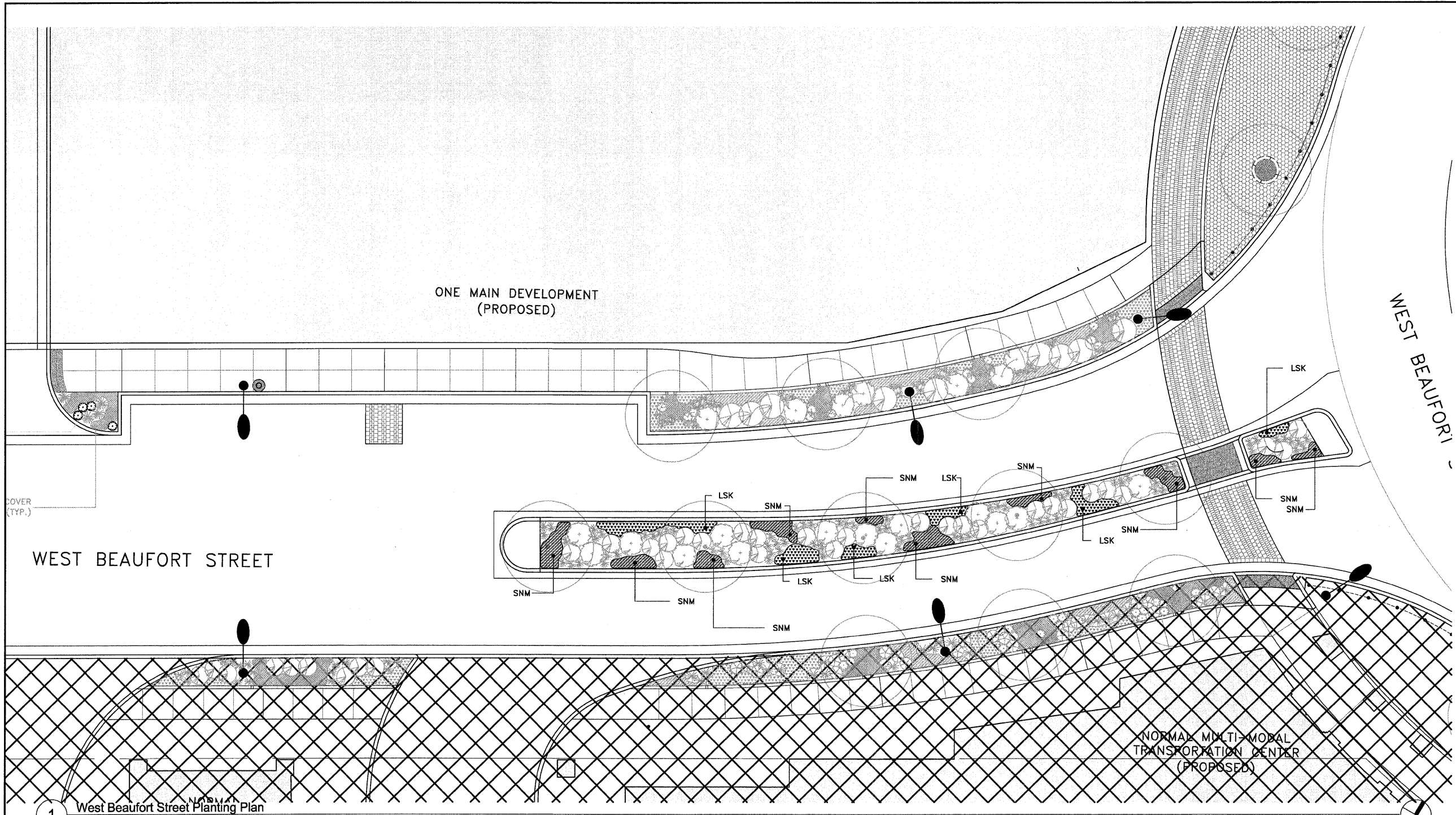
North Street Planting Plans

LP 1.2



MATCHLINE: SEE SHEET LP 1.1

1 North Street Planting Plan
 1/8" = 1'-0"



1 West Beaufort Street Planting Plan
1/8" = 1'-0"

F.A.U. RT.	SECTION	COUNTY	TOTAL SHEETS	SHEET NO.
---	10-00243-01-LS	MCLEAN	15	10

CONTRACT NO. 91451

ILLINOIS FED. AID PROJECT

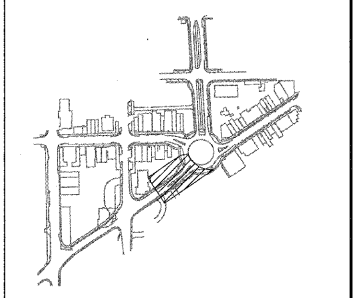
Client
Town of Normal
 100 E. Phoenix Avenue
 Normal, IL 61761-0589
 Contact: Wayne Aldrich
 Phone: 309-454-9760

Landscape Architect
HOERR SCHAUDT
 landscape architects
 850 West Jackson Blvd., Suite 800
 Chicago, IL 60607
 Contact: Rick Reineke
 Phone: 312.492.6501

Subconsultant:

Subconsultant:

Key Plan



UPTOWN NORMAL
 Redevelopment Renewal Project
 Additional Planting
 No.

DATE: February 18, 2007
 SCALE: As Noted

No.	Date	Issue Description
1	12-22-10	Preliminary PSE Submittal
2	01-14-11	Final PSE Submittal

Drawn By:
 Project No. 0201.00 Date

West Beaufort Planting Plans

LP 1.3

SHEET 10 OF 15 SHEETS

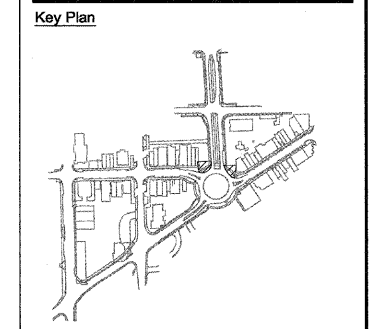
F.A.U. RTE.	SECTION	COUNTY	TOTAL SHEETS	SHEET NO.
10-00243-01-LS		MCLEAN	15	11
CONTRACT NO. 91451				
ILLINOIS FED. AID PROJECT				

Client
Town of Normal
 100 E. Phoenix Avenue
 Normal, IL 61761-0589
 Contact: Wayne Aldrich
 Phone: 309-454-9780

Landscape Architect
HGERR SCHAUDT
 landscape architects
 850 West Jackson Blvd., Suite 800
 Chicago, IL 60607
 Contact: Rick Reineke
 Phone: 312-492-8501

Subconsultant:

Subconsultant:



UPTOWN NORMAL

**Redevelopment Renewal Project
 Additional Planting**

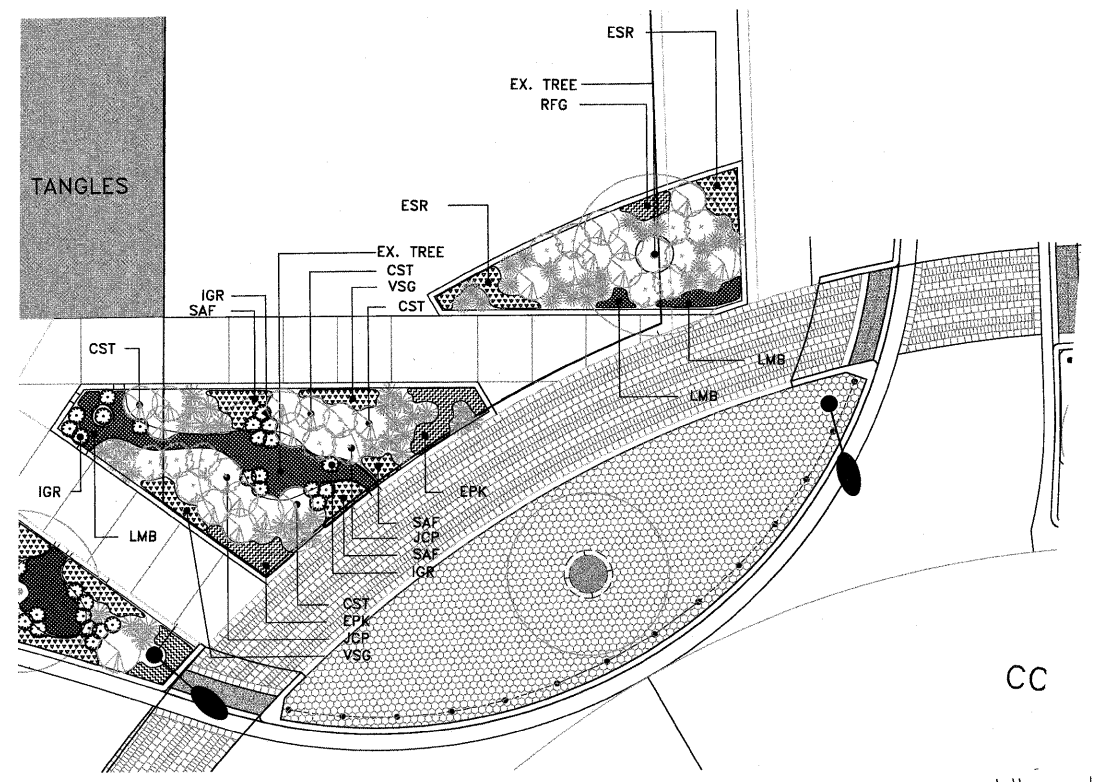
No.
 DATE: February 18, 2007
 SCALE: As Noted

No.	Date	Issue Description
1	12-22-10	Preliminary PSE Submittal
2	01-14-11	Final PSE Submittal

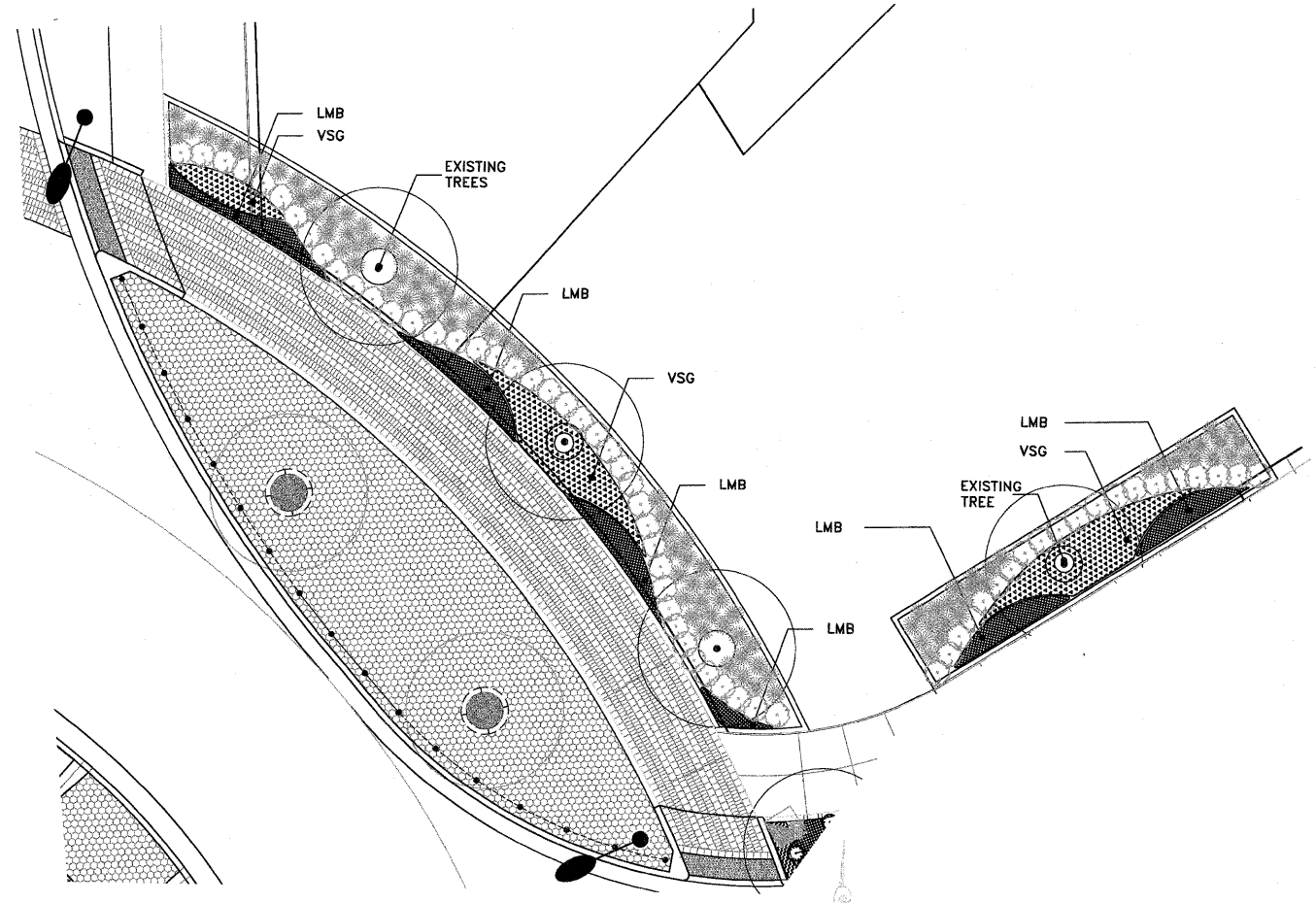
Drawn By:
 Project No. 0201.00 Date

**Landscape Detail
 Temporary Planting Plans**

LP 1.4



2 Temporary Planting Area 1
 Scale: 1/8"=1'-0"



1 Temporary Planting Area 2
 Scale: 1/8"=1'-0"

F.A.U. RTE.	SECTION	COUNTY	TOTAL SHEETS	SHEET NO.
10-00243-01-LS	MCLEAN	15	12	
CONTRACT NO. 91451			ILLINOIS FED. AID PROJECT	

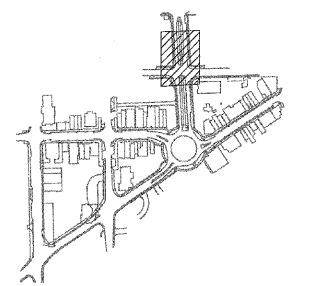
Client
Town of Normal
 100 E. Phoenix Avenue
 Normal, IL 61781-0589
 Contact: Wayne Aldrich
 Phone: 309-454-9760

Landscape Architect
HGERR SCHAUDT
 landscape architects
 850 West Jackson Blvd., Suite 800
 Chicago, IL 60607
 Contact: Rick Reineke
 Phone: 312.492.8501

Subconsultant:

Subconsultant:

Key Plan



Redevelopment Renewal Project
Additional Planting
 No.

DATE: February 18, 2007
 SCALE: As Noted

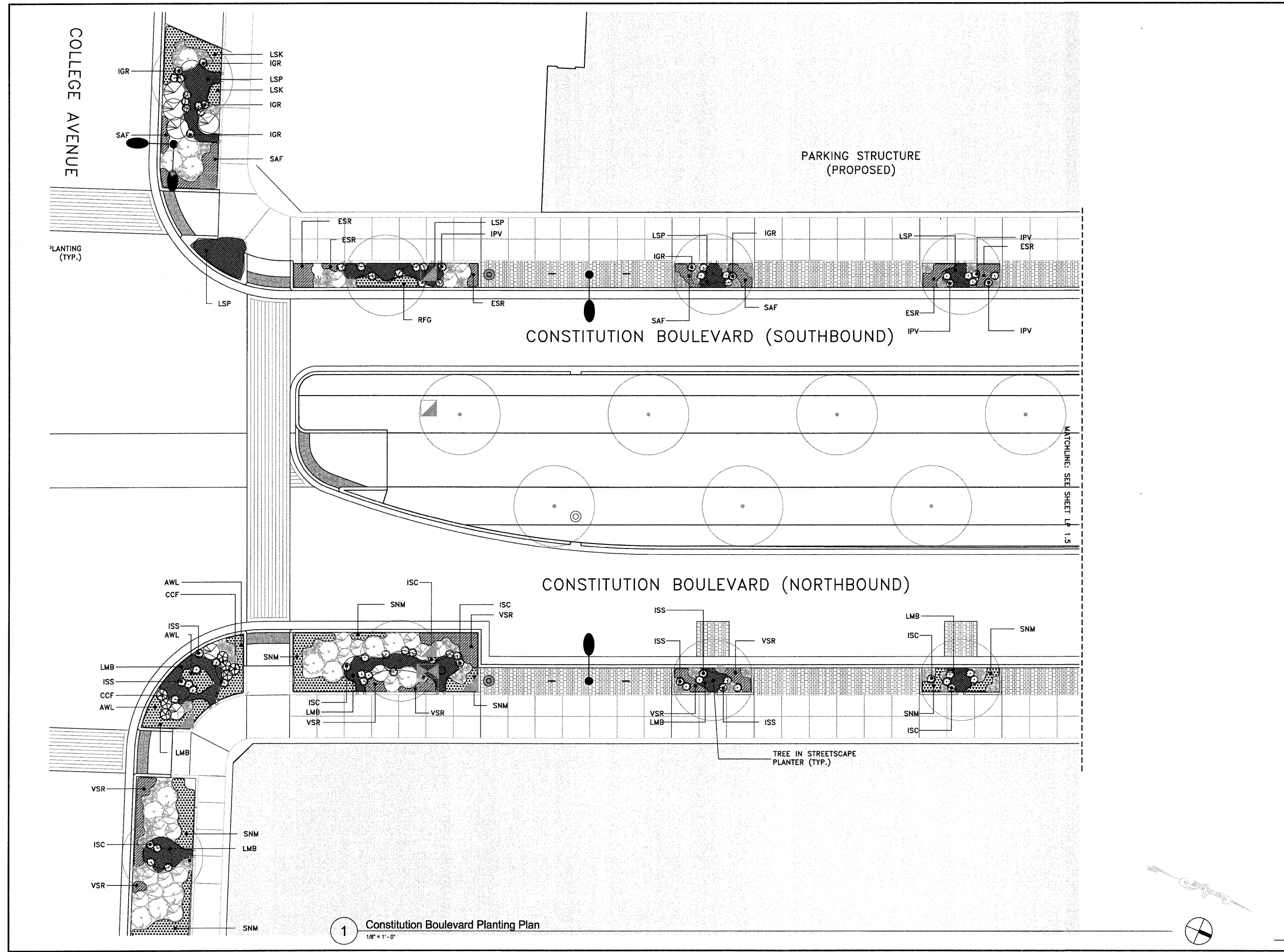
No.	Date	Issue Description
1	12-22-10	Preliminary PSE Submittal
2	01-14-11	Final PSE Submittal

Drawn By: _____ Date: _____
 Project No. 0201.00

Constitution Boulevard Planting Plans

LP 1.5

SHEET 12 OF 15 SHEETS



1 Constitution Boulevard Planting Plan
 1/8" = 1'-0"

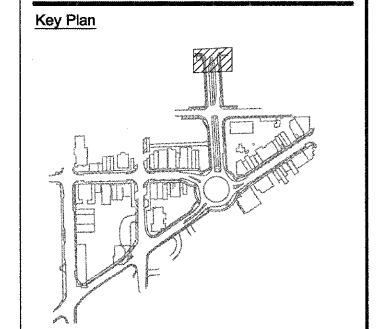
F.A.U. RT#	SECTION	COUNTY	TOTAL SHEETS	SHEET NO.
---	10-00243-01-LS	MCLEAN	15	13
		CONTRACT NO. 91451		
ILLINOIS FED. AID PROJECT				

Client
Town of Normal
 100 E. Phoenix Avenue
 Normal, IL 61761-0589
 Contact: Wayne Aldrich
 Phone: 309-454-9780

Landscape Architect
HGERR SCHAUDT
 landscape architects
 850 West Jackson Blvd., Suite 800
 Chicago, IL 60607
 Contact: Rick Raineke
 Phone: 312.492.6501

Subconsultant:

Subconsultant:



UPTOWN NORMAL

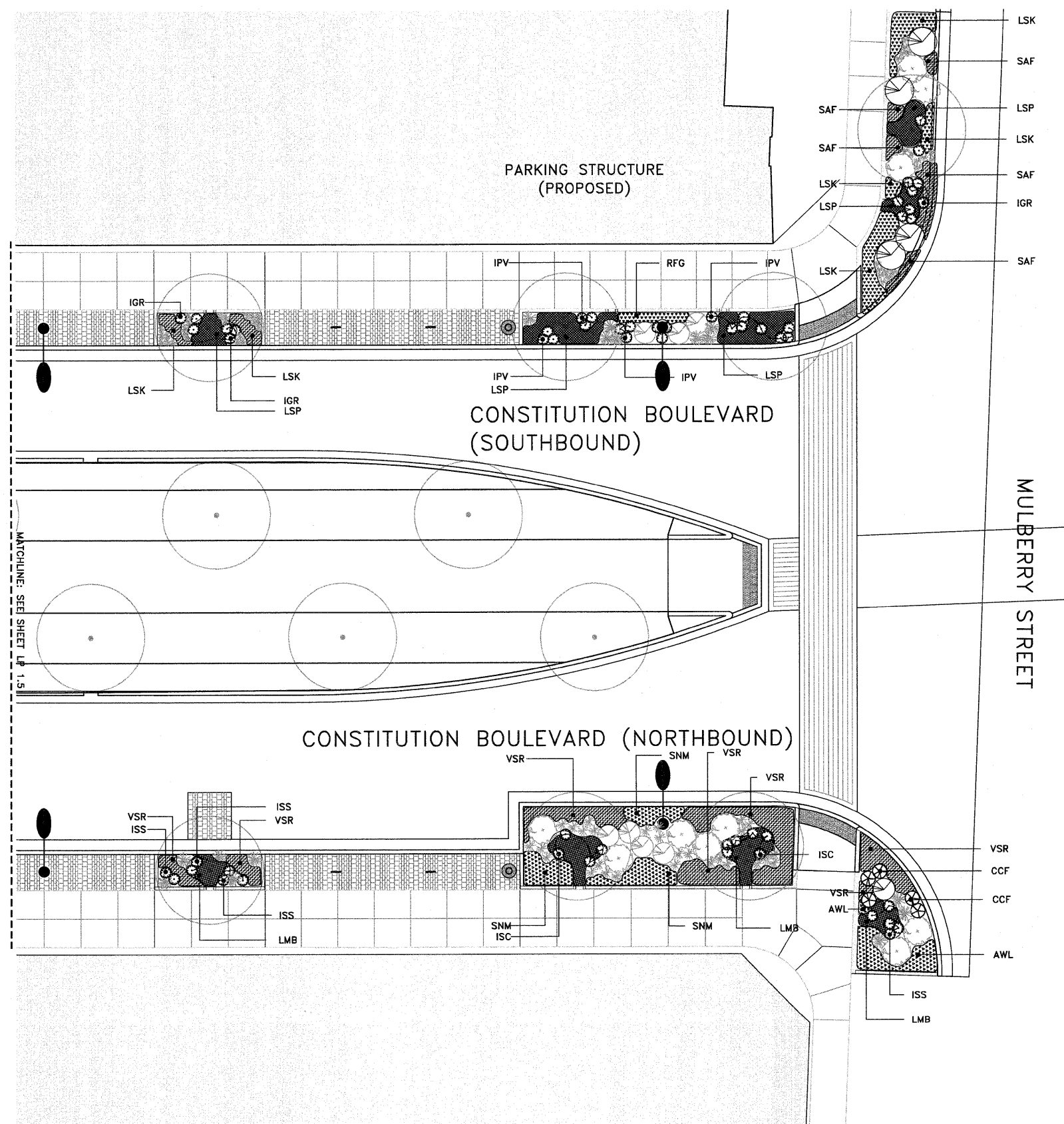
Redevelopment Renewal Project
Additional Planting
 No.
 DATE: February 18, 2007
 SCALE: As Noted

No.	Date	Issue Description
1	12-22-10	Preliminary PSE Submittal
2	01-14-11	Final PSE Submittal

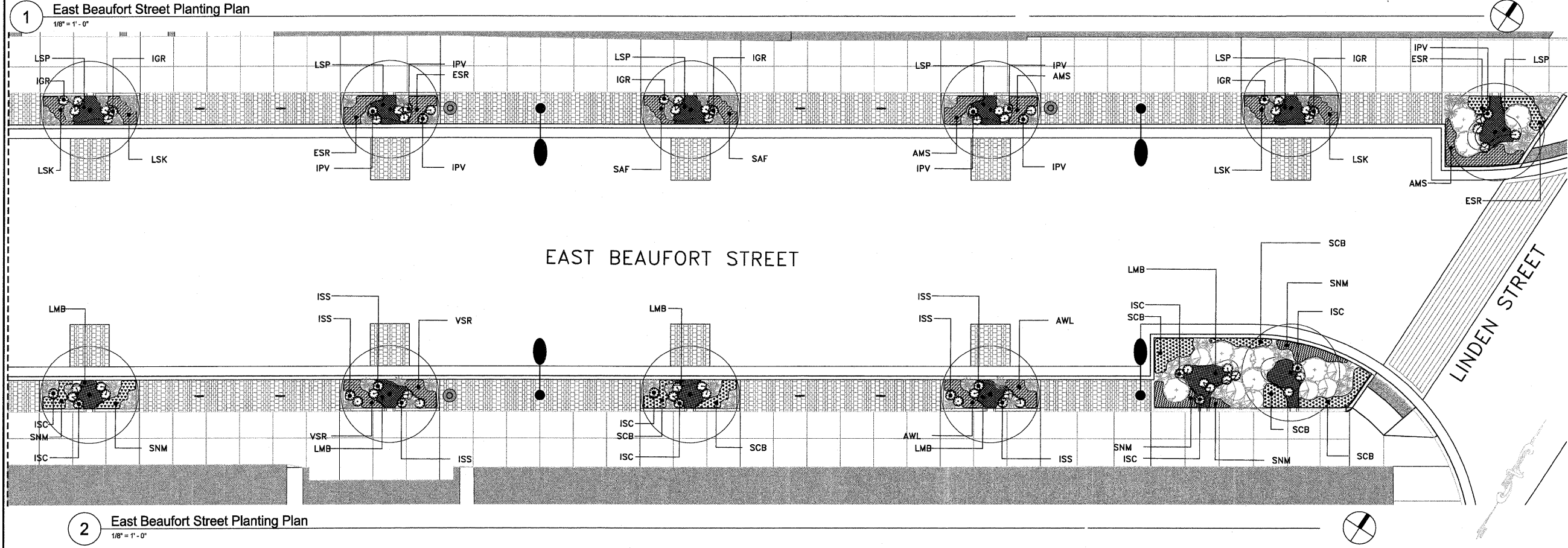
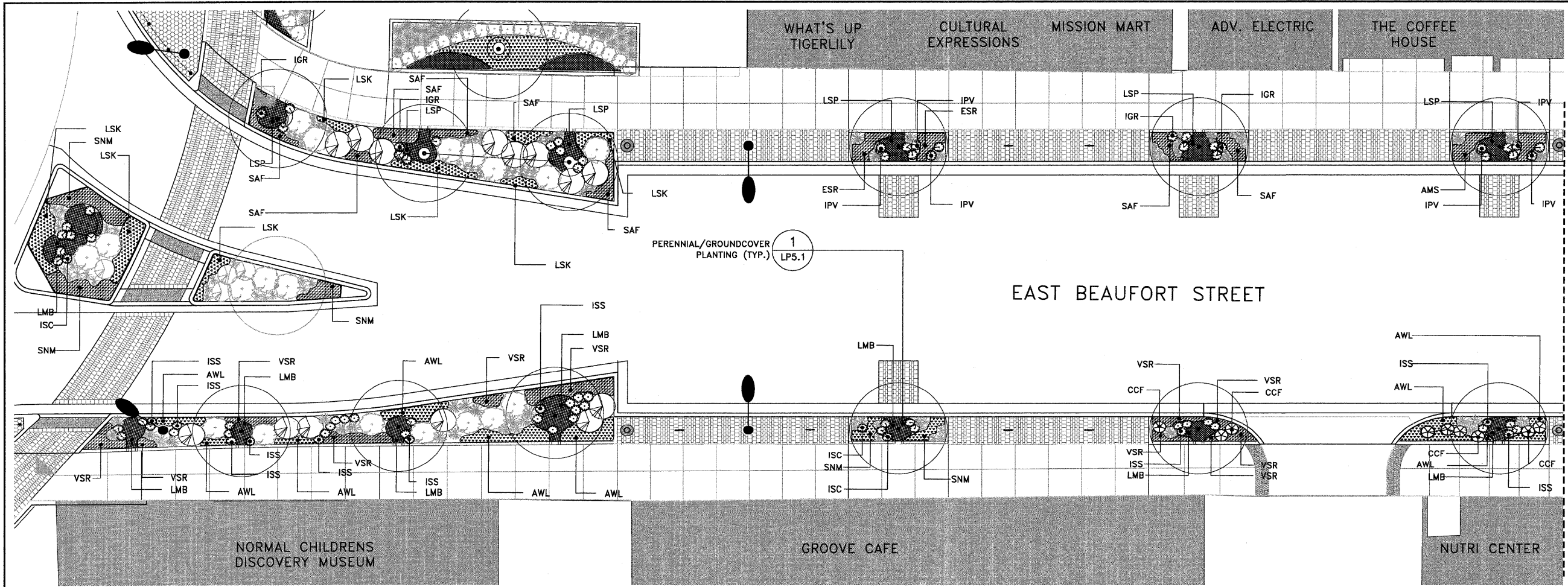
Drawn By:
 Project No. 0201.00 Date

Constitution Boulevard Planting Plans

LP 1.6
 SHEET 13 OF 15 SHEETS



1 Constitution Boulevard Planting Plan
 1/8" = 1'-0"



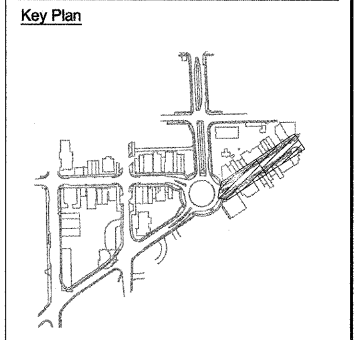
F.A.U. RTE.	SECTION	COUNTY	TOTAL SHEETS	SHEET NO.
10-00243-01-LS		MCLEAN	15	14
CONTRACT NO. 91451				
ILLINOIS FED. AID PROJECT				

Client
Town of Normal
 100 E. Phoenix Avenue
 Normal, IL 61761-0589
 Contact: Wayne Aldrich
 Phone: 309-454-9760

Landscape Architect
HOERR SCHAUDT
 landscape architects
 850 West Jackson Blvd., Suite 800
 Chicago, IL 60607
 Contact: Rick Reineke
 Phone: 312.492.6501

Subconsultant:

Subconsultant:



UPTOWN NORMAL

Redevelopment Renewal Project
Additional Planting

No. _____
 DATE: February 18, 2007
 SCALE: _____

No.	Date	Issue Description
1	12-22-10	Preliminary PSE Submittal
2	01-14-11	Final PSE Submittal

Drawn By: _____
 Project No. 0201.00 Date _____

East Beaufort Planting Plans

LP 1.7

F.A.U. RTE.	SECTION	COUNTY	TOTAL SHEETS	SHEET NO.
10-00243-01-LS		MCLEAN	15	15
CONTRACT NO. 91451				
ILLINOIS FED. AID PROJECT				

Client

Town of Normal
 100 E. Phoenix Avenue
 Normal, IL 61781-0589
 Contact: Wayne Aldrich
 Phone: 309-454-9760

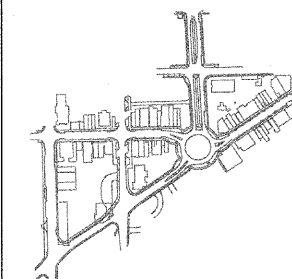
Landscape Architect

HGERR SCHAUDT
 landscape architects
 850 West Jackson Blvd., Suite 800
 Chicago, IL 60607
 Contact: Rick Reineke
 Phone: 312.492.6501

Subconsultant:

Subconsultant:

Key Plan



UPTOWN NORMAL

**Redevelopment Renewal Project
 Additional Planting**

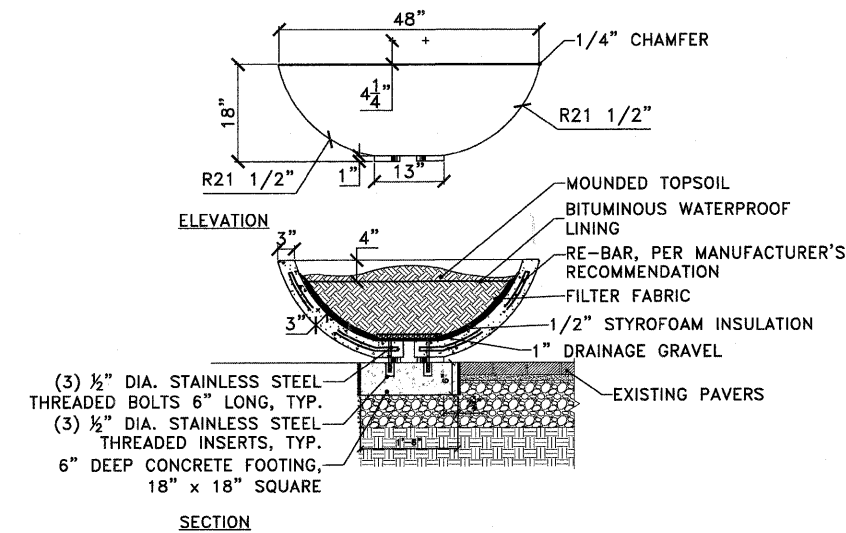
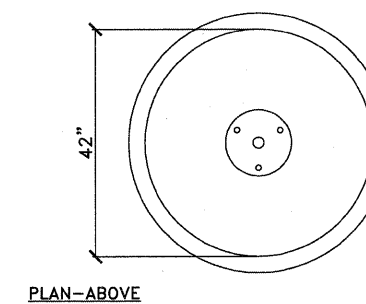
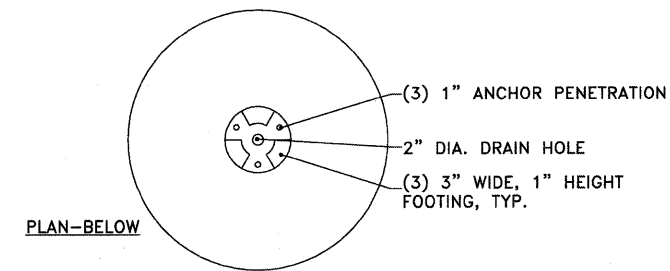
No. _____
 DATE: February 18, 2007
 SCALE: As Noted

No.	Date	Issue Description
1	12-22-10	Preliminary PSE Submittal
2	01-14-11	Final PSE Submittal

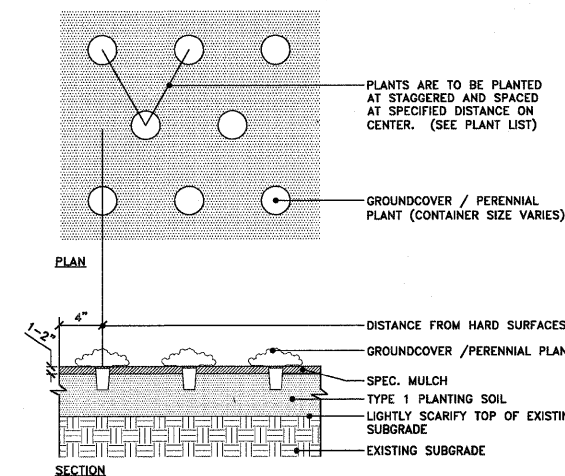
Drawn By: _____
 Project No. 0201.00 Date _____

**Landscape Planting
 Detail & Plantlist**

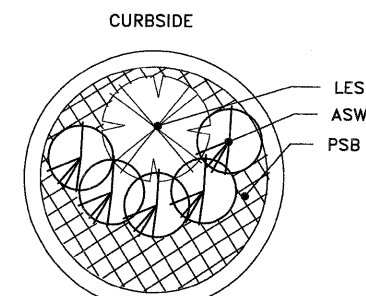
LP 5.1



2 4 FOOT PRE-CAST CONCRETE PLANTER
 Scale: 3/4"=1'-0"



1 Perennial / Ground Planting, Typ.
 Scale: 1"=1'-0"



3 4' PLANTER PLANTING PLAN
 Scale: 1/2"=1'-0"