

F.A.S. RTE.	SECTION	COUNTY	TOTAL SHEETS	SHEET NO.
609	07-00099-00-BR	MORGAN	48	1
FED. ROAD DIST. NO. 7		ILLINOIS	CONTRACT NO. 93545	

INDEX OF SHEETS

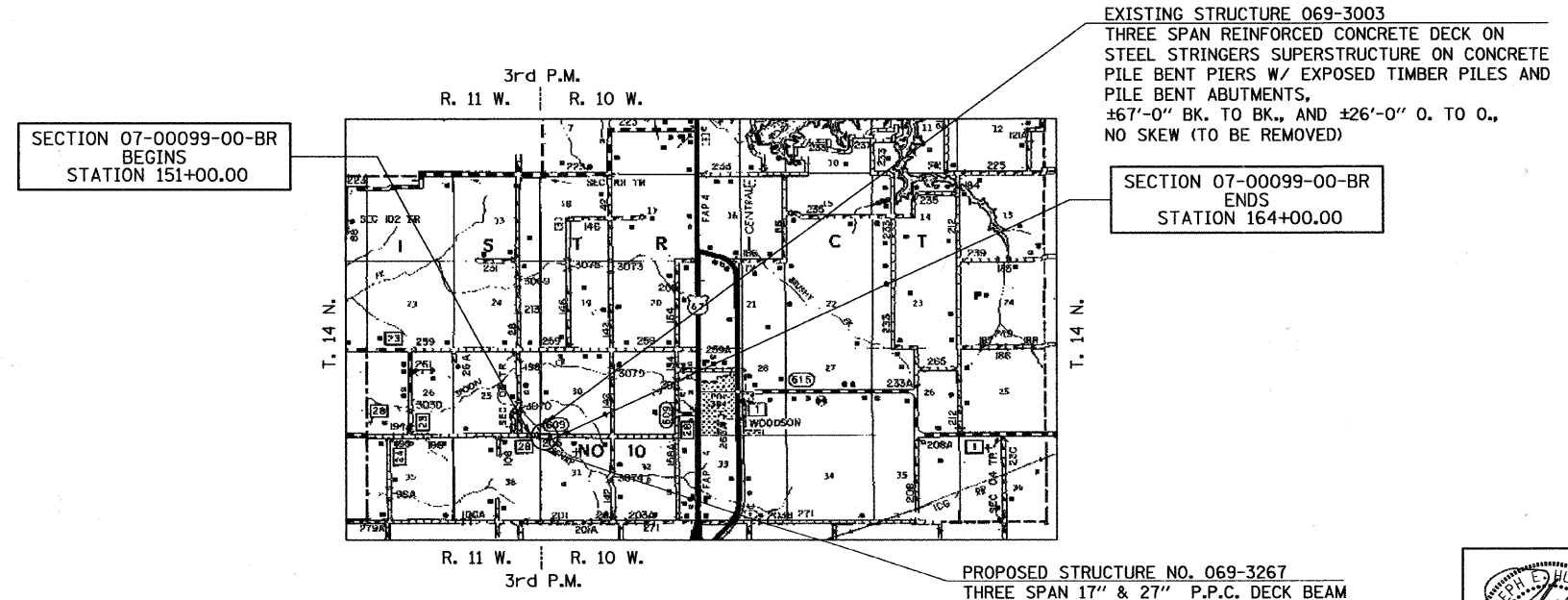
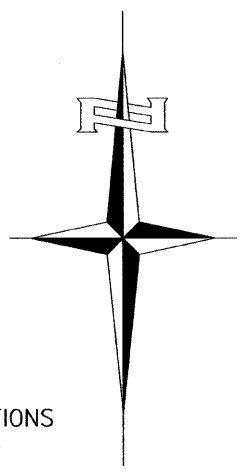
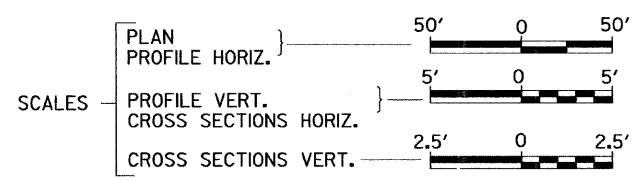
SHEET NO.	DESCRIPTION
1.	COVER SHEET
2.	GENERAL NOTES, TYPICAL SECTIONS, PAVEMENT DESIGN INFORMATION
3.	DETAILS, SUMMARY OF QUANTITIES
4.	SCHEDULES OF QUANTITIES
5.	TRAFFIC CONTROL PLAN
6.	STORM WATER POLLUTION PREVENTION PLAN
7.-8.	PLAN AND PROFILE
9.-20.	STRUCTURE PLANS
21.-48.	CROSS SECTIONS

STATE OF ILLINOIS
DEPARTMENT OF TRANSPORTATION
PLANS FOR PROPOSED
HIGHWAY BRIDGE PROGRAM
MORGAN COUNTY
SECTION 07-00099-00-BR
F.A.S. 609 (CH 28) OVER HENRY CREEK
PROJECT NO. BRS-0609(109)
JOB NUMBER C-96-205-11



REQUIRED HIGHWAY STANDARDS

000001-06	STANDARD SYMBOLS, ABBREVIATIONS AND PATTERNS
280001-05	TEMPORARY EROSION CONTROL SYSTEMS
515001-03	NAME PLATE FOR BRIDGES
630001-09	STEEL PLATE BEAM GUARDRAIL
630301-05	SHOULDER WIDENING FOR TYPE 1 (SPECIAL) GUARDRAIL TERMINALS
631032-06	TRAFFIC BARRIER TERMINAL, TYPE 6A
635006-03	REFLECTOR AND TERMINAL MARKER PLACEMENT
635011-02	REFLECTOR MARKER AND MOUNTING DETAILS
701901-01	TRAFFIC CONTROL DEVICES
780001-02	TYPICAL PAVEMENT MARKINGS
BLR 21-8	TYPICAL APPLICATION OF TRAFFIC CONTROL DEVICES FOR CONSTRUCTION ON RURAL LOCAL HIGHWAYS

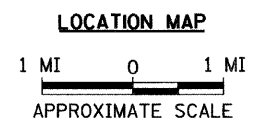


UTILITY COMPANIES

FRONTIER COMMUNICATIONS
JACKSONVILLE, ILLINOIS

ILLINOIS RURAL ELECTRIC
WINCHESTER, ILLINOIS

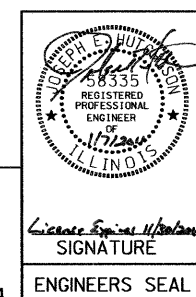
J.U.L.I.E.
JOINT UTILITY LOCATION INFORMATION FOR EXCAVATION
 1-800-892-0123
 OR 811



NET LENGTH OF PROJECT = 1,300.00 FEET = 0.246 MILES

DESIGN CLASSIFICATION: MAJOR-COLLECTOR (NON-URBAN)
 DESIGN ADT = 1,075 (2031)
 DESIGN SPEED = 40 MPH

Hutchison Engineering, Inc.
 JACKSONVILLE ILLINOIS



APPROVED	<u>1-7</u>	2011
	<i>Calvin W. Homes</i>	MORGAN COUNTY ENGINEER
PASSED	<u>February 7</u>	2011
	<i>Jessie J. Felt</i>	DISTRICT SIX ENGINEER OF LOCAL ROADS & STREETS
PASSED	<u>February 7</u>	2011
	<i>Ron Duchambeau</i>	DISTRICT SIX ENGINEER OF CONSTRUCTION
Released For Bid Based on Limited Review	<u>February 7</u>	2011
	<i>Roger Druehll</i>	DEPUTY DIRECTOR OF HIGHWAYS, REGION FOUR ENGINEER
		STATE OF ILLINOIS DEPARTMENT OF TRANSPORTATION