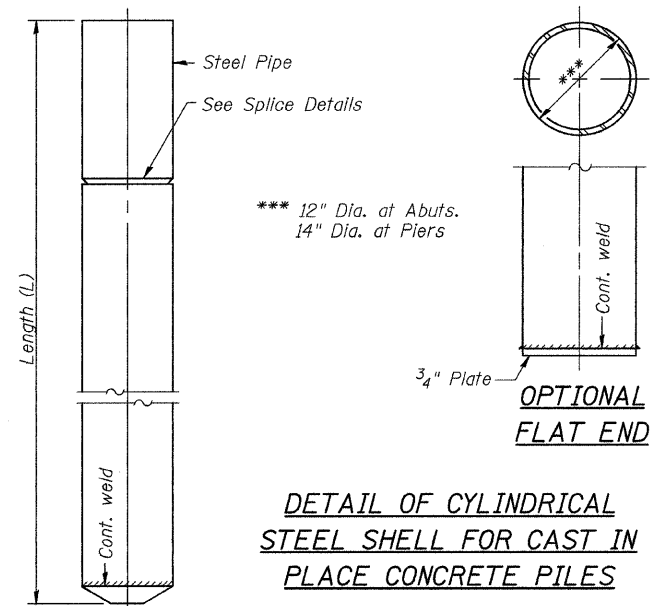
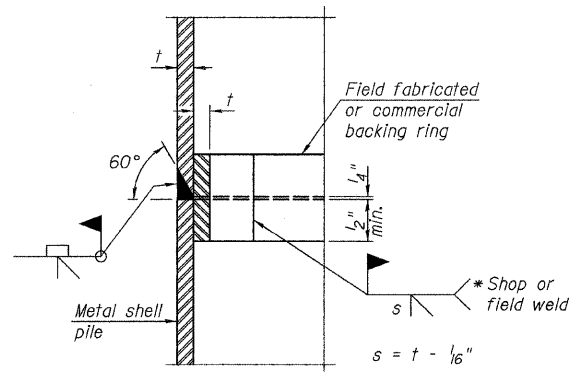


Notes: Driving and bearing ends of pipe shall be cut square. The thickness of the shells shall be 0.25 inches for 12" piles and 0.312 inches for 14" piles with a tolerance of 5%. The shells shall be according to Article 1006.05(a) of the Standard Specifications, and shall be ASTM A252 Grade 3.

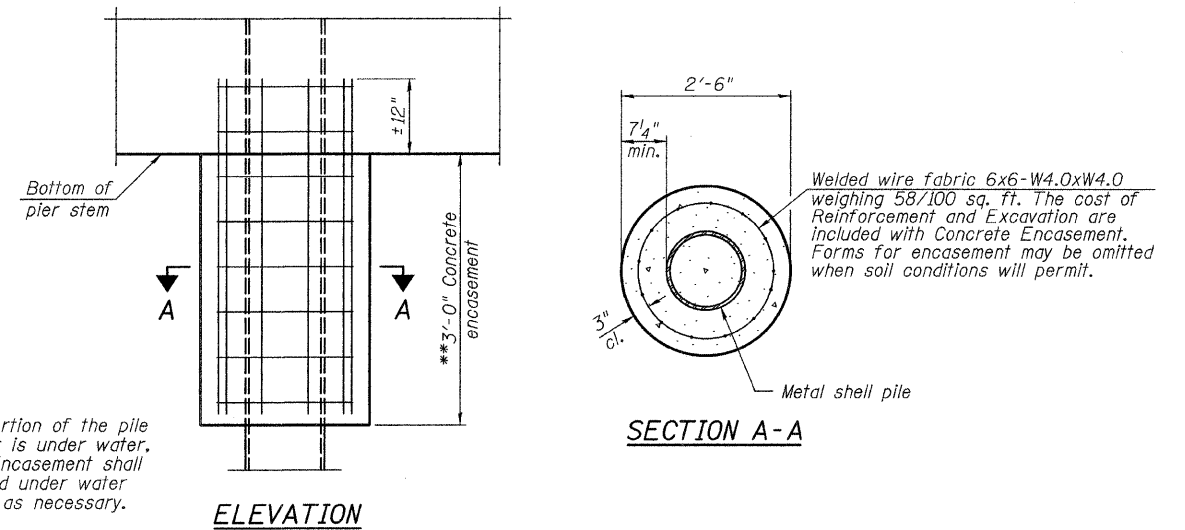


DETAIL OF CYLINDRICAL STEEL SHELL FOR CAST IN PLACE CONCRETE PILES

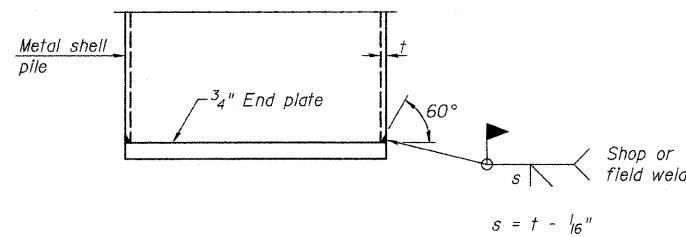


COMPLETE PENETRATION WELD SPLICE

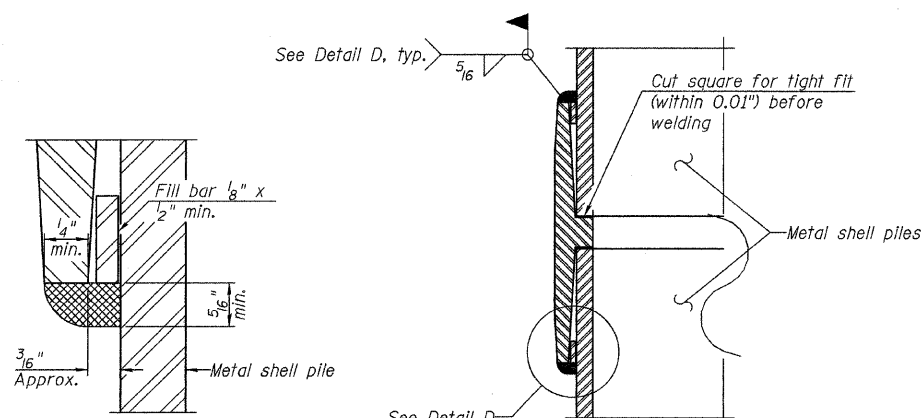
* Field fabricated backing ring may be made from pile shell by removing segment to allow reducing circumference and vertically rejoin with partial joint penetration weld.



DETAIL OF PROTECTION FOR METAL SHELLS AT PIERS



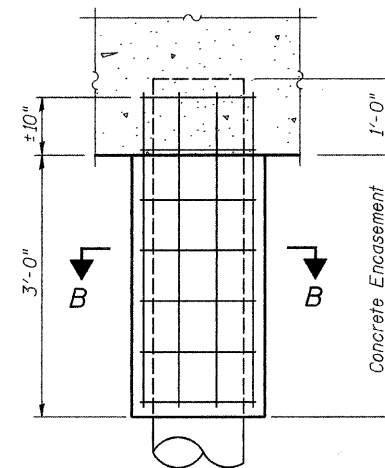
END PLATE ATTACHMENT



DETAIL D

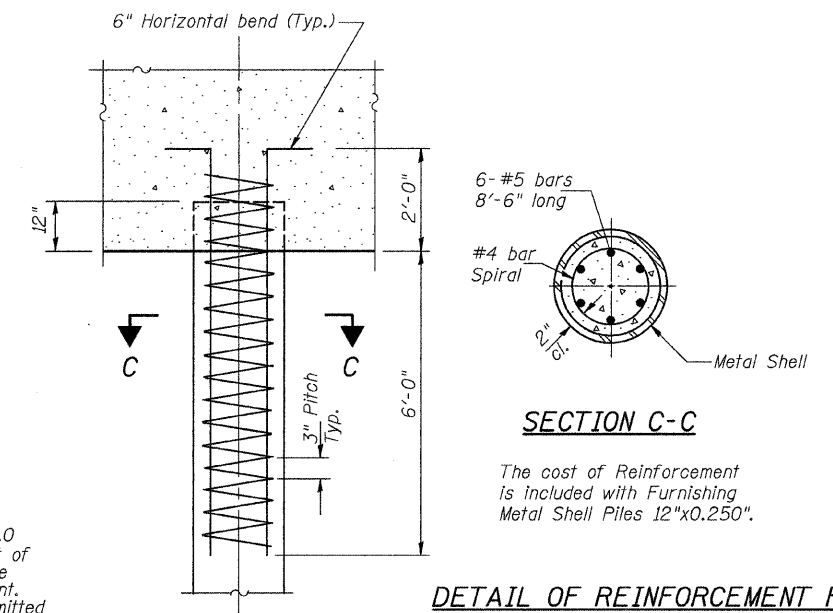
Notes: The 1/8" x 1/2" min. fill bar may be constructed of 2 bars with a 1/8" max. gap between them. Pile segments shall be driven to solid contact with splicer before welding.

WELDED COMMERCIAL SPLICE



SECTION B-B

DETAIL OF METAL SHELL PILE ENCASMENT AT ABUTMENTS



SECTION C-C

DETAIL OF REINFORCEMENT FOR METAL SHELLS AT ABUTMENTS

**METAL SHELL PILE DETAILS
MORGAN COUNTY
SECTION 07-00099-00-BR
C.H. 28 OVER HENRY CREEK**

SHEET NO. 12	ROUTE NO.	SECTION	COUNTY	TOTAL SHEETS	SHEET NO.
	CH 28	07-00099-00-BR	MORGAN	48	20
12 SHEETS	S.N. 069-3267		CONTRACT NO. 93545		
	FED. ROAD DIST. NO. 7 ILLINOIS		FED. AID PROJECT BRS-0609(109)		