

RTE.	SECTION	COUNTY	TOTAL SHEETS	SHEET NO.
TR99A	03-03126-00-BR	MOULTRIE	14	1
FED. ROAD DIST. NO. 7	ILLINOIS	CONTRACT NO. 95636		

STATE OF ILLINOIS  
DEPARTMENT OF TRANSPORTATION  
DIVISION OF HIGHWAYS

PLANS FOR PROPOSED  
HIGHWAY BRIDGE PROGRAM  
SECTION 03-03126-00-BR  
JONATHAN CREEK TOWNSHIP  
TR 99A  
MOULTRIE COUNTY

JOB NO. C-97-152-10  
PROJECT NO. BROS-0139 (057)

INDEX OF SHEETS

- 1 COVER SHEET
- 2 SUMMARY OF QUANTITIES
- 3 PLAN AND PROFILE
- 4 BRIDGE PLAN AND ELEVATION
- 5-6 PRECAST CONCRETE BRIDGE SLAB
- 7 TYPE S-1 STEEL RAILING
- 8 ABUTMENT DETAILS
- 9 PIER DETAILS
- 10 METAL SHELL PILE DETAILS
- 11 EROSION CONTROL PLAN
- 12-14 CROSS SECTIONS

HIGHWAY STANDARDS

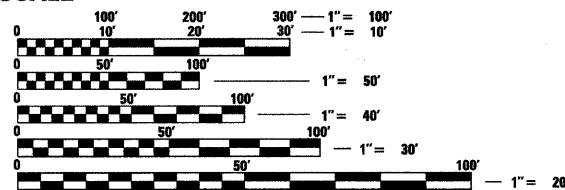
- 000001-06 STANDARD SYMBOLS, ABBREVIATIONS AND PATTERNS
- 280001-05 TEMPORARY EROSION CONTROL SYSTEMS
- 515001-03 NAME PLATES FOR BRIDGES
- 635006-03 REFLECTOR AND TERMINAL MARKER PLACEMENT
- 701901-01 TRAFFIC CONTROL DEVICES
- BLR 21-8 TYPICAL APPLICATION OF TRAFFIC CONTROL DEVICES FOR CONSTRUCTION ON RURAL LOCAL HIGHWAYS

UTILITIES

- AMERON CIPS
- COLES MOULTRIE
- VERIZON
- MOULTRIE INDEPENDENT TELE
- MOULTRIE CITY RURAL PUBLIC WATER

ADT-CURRENT 75 (2010) DESIGN ADT 100 (2030)  
CLASS-LOCAL RURAL ROAD  
DESIGN SPEED-30 MPH

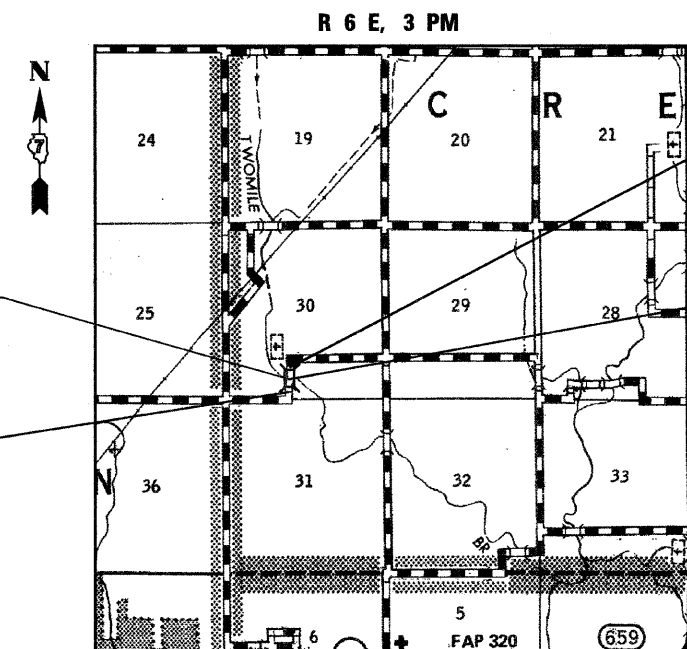
SCALE



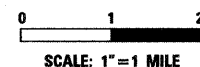
FULL SIZE PLANS HAVE BEEN PREPARED USING STANDARD ENGINEERING SCALES. REDUCED SIZED PLANS WILL NOT CONFORM TO STANDARD SCALES. IN MAKING MEASUREMENTS ON REDUCED PLANS, THE ABOVE SCALES MAY BE USED.

J.U.L.I.E.  
JOINT UTILITY LOCATION INFORMATION FOR EXCAVATION  
1-800-892-0123  
OR 811

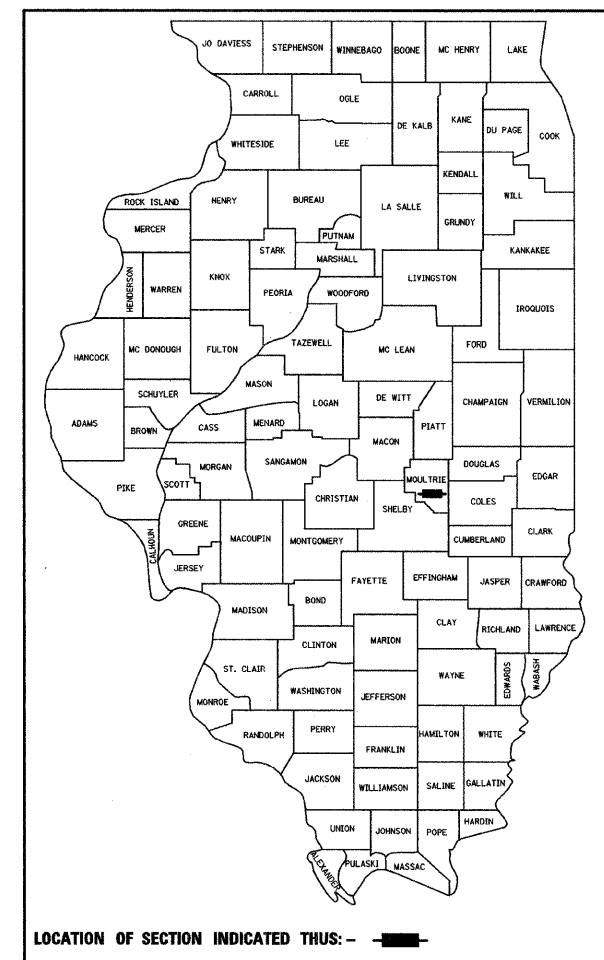
CONTRACT NO. 95636



LOCATION MAP



TOTAL AND NET LENGTH OF PROJECT = 600 FT. = 0.11 MI.



PROJECT ENDS  
STA 19+00

EXISTING STRUCTURE #070-4307  
STA 15+00

PROJECT BEGINS  
STA 13+00

PROPOSED STRUCTURE #070-4334  
STA. 15+00, 26'-3" WIDE x 71'-6"  
LONG, THREE SPAN PRECAST,  
CONCRETE BRIDGE SLAB,  
21" MAX DEPTH, 30° SKEW.



Martin J. Silvester  
02-10-2011  
MARTIN SILVESTER, P.E.  
LICENSE EXP. DATE 11-30-2011

APPROVED FEBRUARY 15 20 11

*John L. Buel*  
COUNTY ENGINEER

PASSED 2-22 20 11

*Maurice Kasal*  
DISTRICT SEVEN ENGINEER OF  
LOCAL ROADS AND STREETS

RELEASING FOR  
BID BASED ON  
LIMITED REVIEW 2/22 20 11

*Robert D. Dushoff*  
DEPUTY DIRECTOR OF HIGHWAYS  
REGION FOUR ENGINEER  
STATE OF ILLINOIS  
DEPARTMENT OF TRANSPORTATION