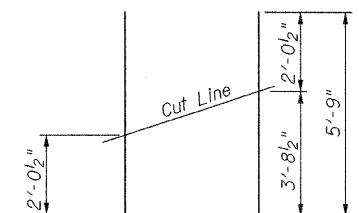
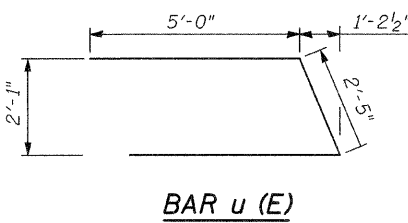
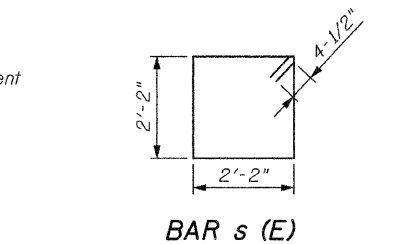
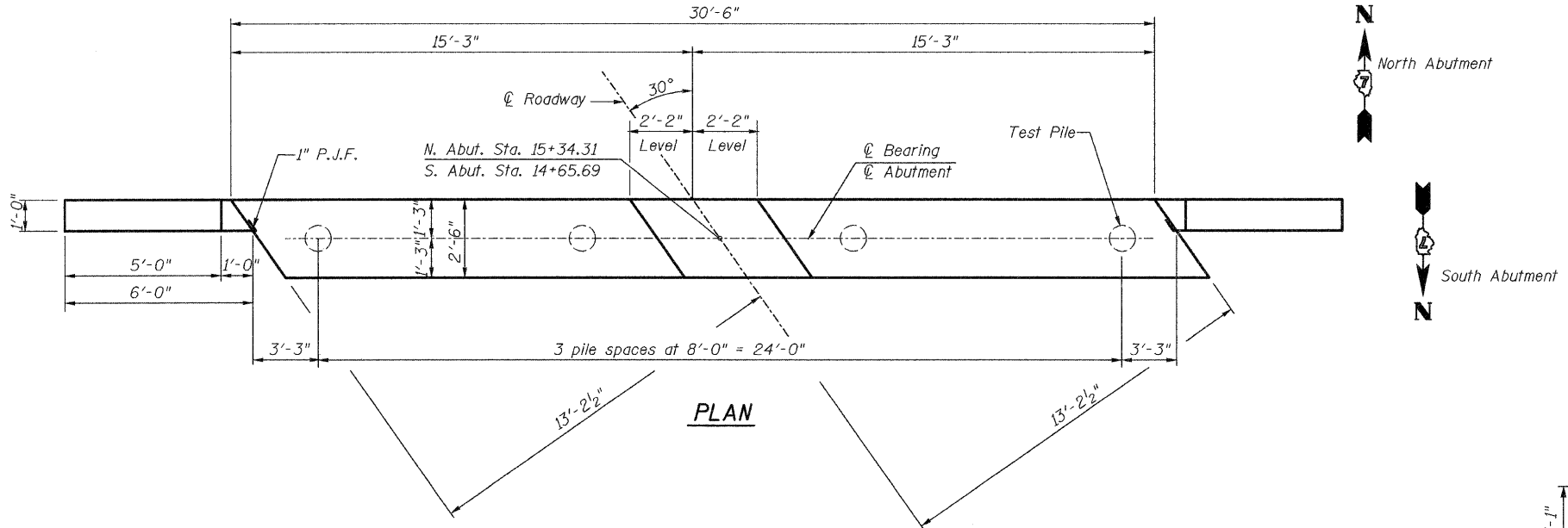


BILL OF MATERIAL

(BOTH ABUTMENTS AND FOUR WINGS)

BAR	NO. REQ'D.	SIZE	LENGTH	SHAPE
h (E)	48	#5	7'-9"	—
h ₁ (E)	6	#5	30'-2"	—
p (E)	20	#7	30'-2"	—
s (E)	54	#4	9'-5"	□
u (E)	16	#6	12'-5"	—
v (E)	28	#5	5'-9"	—
v ₁ (E)	62	#5	3'-8"	—

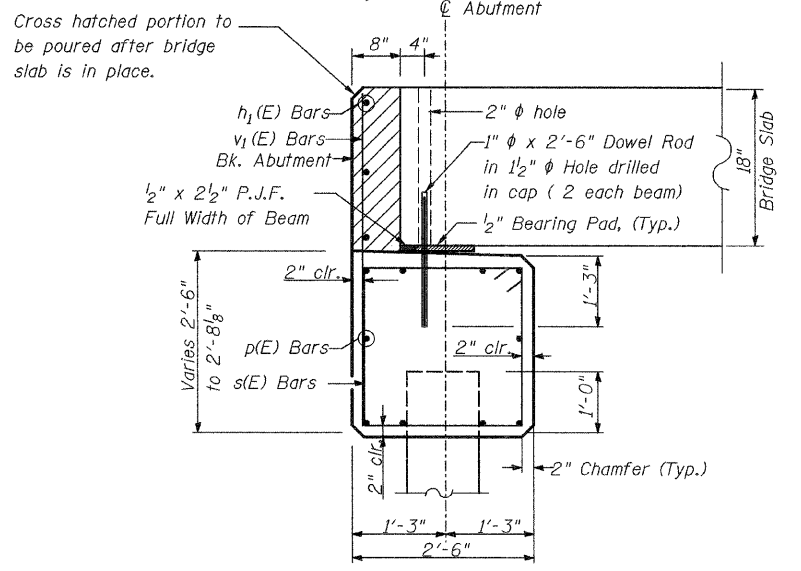
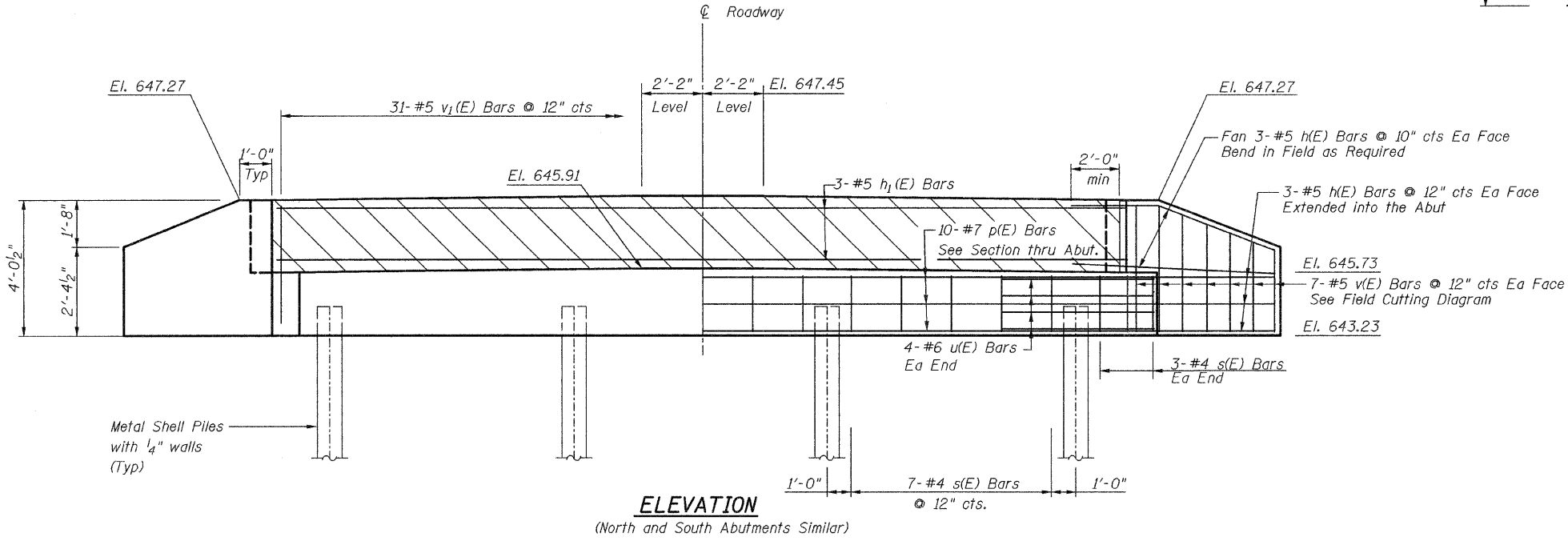
Structure Excavation	Cu. Yd.	75
Concrete Structures	Cu. Yd.	20
Reinforcement Bars, Epoxy Coated	Pound	2850
Furnishing Metal Shell Piles 12"x0.250"	Foot	120
Driving Piles	Foot	120
Test Pile Metal Shell	Each	2



FIELD CUTTING DIAGRAM

Order v(E) bars full length. Cut as shown and use remainder of bars in opposite face.

After beams have been erected, holes shall be drilled into substructure and anchor dowels placed. Dowel holes shall be filled with non-shrink grout to top of beam and allowed to cure (min. 24 hours) prior to grouting the shear keys.



SECTION THRU ABUT

PILE DATA

Type & Size: Metal Shell Piles 12" x 0.250
No. Required: 8*
Nominal Required Bearing: 200 kips
Allowable Resistance Available: 100 kips
Est. Length (N. Abut.): 20 Ft.
Est. Length (S. Abut.): 20 Ft.

*Includes one Test Pile at North & South Abutments
The test pile(s) shall be driven to 110% of the normal required bearing indicated in the pile data information.

ABUTMENT DETAILS

STRUCTURE NO. 070-4334

RTE.	SECTION	COUNTY	TOTAL SHEETS	SHEET NO.
TR99A	03-03126-00-BR	MOULTRIE	14	8
CONTRACT NO. 95636				

THE UPCHURCH GROUP, INC.

FED. ROAD DIST. NO. 7 ILLINOIS FED. AID PROJECT