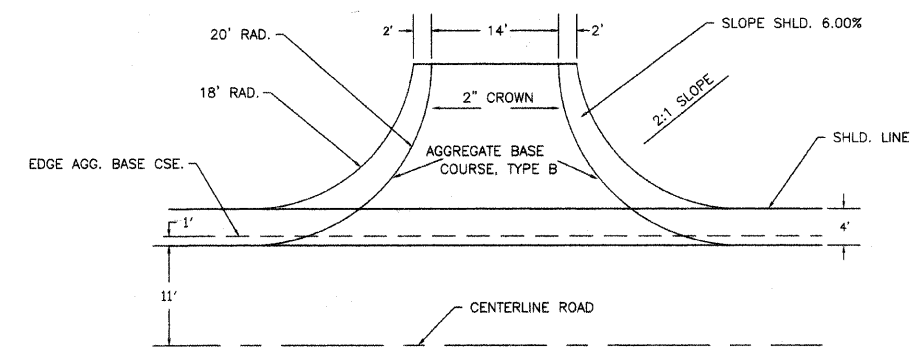
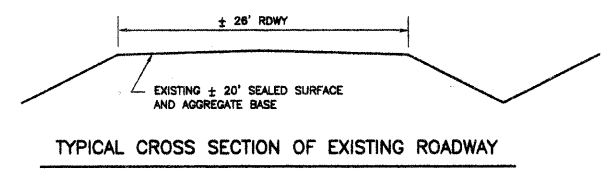
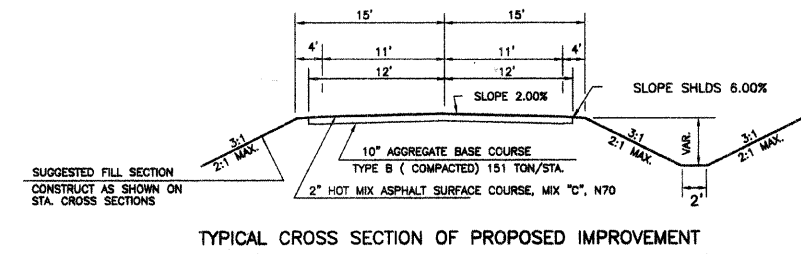
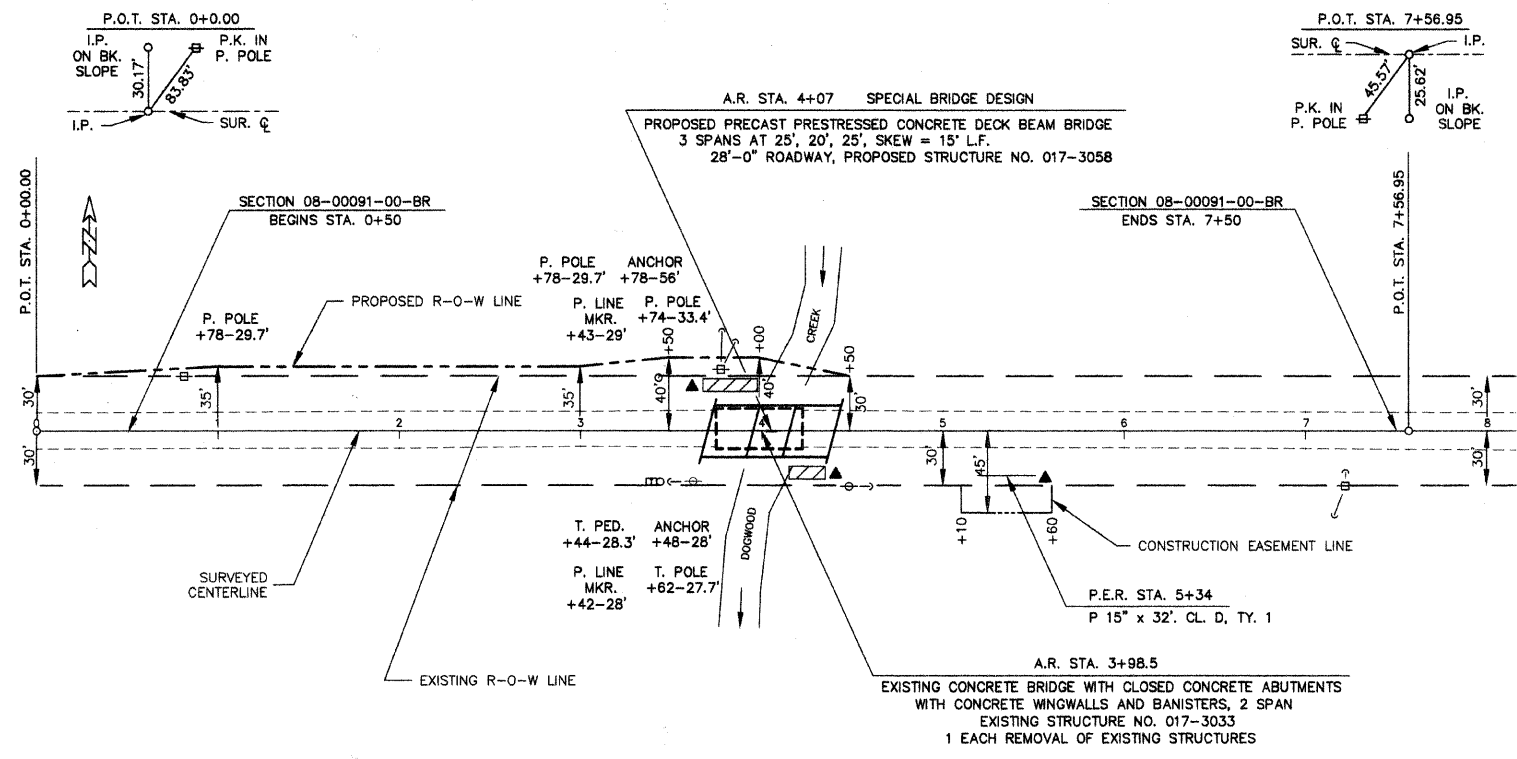


SECTION	08-00091-00-BR	TOTAL SHEETS	16	SHEET NO.	2
COUNTY	CRAWFORD	STA.	0+00	TO STA.	8+00
CONTRACT NO.	95649				

LAIRD DART



SCALES:
1" = 50' HOR
1" = 10' VER

B.M. # 1 ELEVATION 488.03
P.K. NAIL IN POWER POLE
29.7' LT. STA. 0+78

B.M. # 2 ELEVATION 488.86
P.K. NAIL IN POWER POLE
30.2' RT. STA. 7+22

LAIRD DART

DETAIL OF FIELD ENTRANCE

1 @ 20 TON EACH = 20 TONS

EARTHWORK SCHEDULE		HOT MIX ASPHALT SURFACE COURSE, MIX C, N 70		PERIMETER EROSION BARRIER		▲ TEMPORARY DITCH CHECKS		CONSTRUCT TRANSITION		POROUS GRANULAR EMBANKMENT	
EARTH EXCAVATION	= 135 CU.YD.	STA. 0+00 TO STA. 8+00	= 225 TONS	LOCATE ALONG TOE OF CHANNEL SLOPE	15 FEET @ EACH COR. BRIDGE = 60 FEET	LT. STA. 3+70 = 12 FEET		FROM EXISTING 28' RDWY. TO PROPOSED 30' RDWY.	STA. 0+00 TO STA. 0+50 AND STA. 7+50 TO STA. 8+00	WEST ABUTMENT(30' WIDE) = 29 TON	
EARTH EXCAVATION ADJUSTED 25%	= 101 CU.YD.	AGGREGATE BASE COURSE, TYPE B		SEEDING CLASS 2 SPECIAL	STA. 0+50 TO STA. 8+50 = 0.8 ACRES	RT. STA. 4+40 = 12 FEET		FROM EXISTING 20' SURFACE (1/2" THICK) TO PROPOSED 22' SURFACE (2" THICK)	STA. 0+00 TO STA. 0+50 AND STA. 7+50 TO STA. 8+00	EAST ABUTMENT(30' WIDE) = 29 TON	
CHANNEL EXCAVATION	= 180 CU.YD.	STA. 0+50 TO STA. 3+71	= 486 TON	STA. 0+50 TO STA. 8+50	= 973 TON	RT. STA. 5+50 = 12 FEET		TOTAL = 36 FEET		TOTAL = 58 TON	
CHANNEL EXCAVATION ADJUSTED 25%	= 135 CU.YD.	STA. 4+41 TO STA. 7+50	= 467 TON	AGGREGATE DITCH	LT. STA. 3+70 TO STA. 4+00 = 9 TON	TOTAL = 15 TON		TRAFFIC BARRIER TERMINALS, TYPE 5A	APPROACH CORNERS OF BRIDGE = 2 EACH		
EMBANKMENT	= 904 CU.YD.	P.E.R. STA. 5+34	= 20 TON		RT. STA. 4+20 TO STA. 4+40 = 6 TON			TRAFFIC BARRIER TERMINALS, TYPE 1 SPECIAL (TANGENT)	APPROACH CORNERS OF BRIDGE = 2 EACH		
FURNISHED EXCAVATION	= 668 CU.YD.										

UTILITIES	
ELECTRIC	: NORRIS ELECTRIC COOP. 8543 N. STATE HWY. 130 NEWTON, IL 62448 618-783-8765
TELEPHONE	: FRONTIER 225 E. CHESTNUT ST. OLNEY, IL 62450 618-395-6189