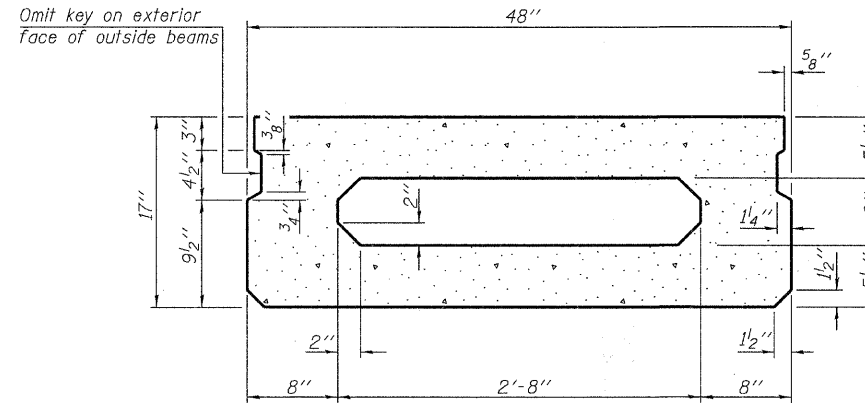
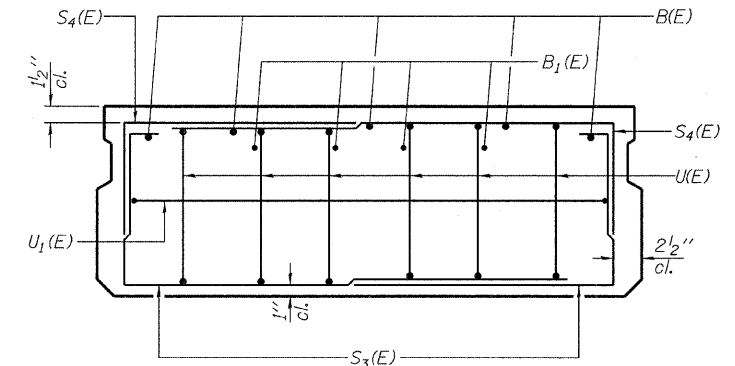


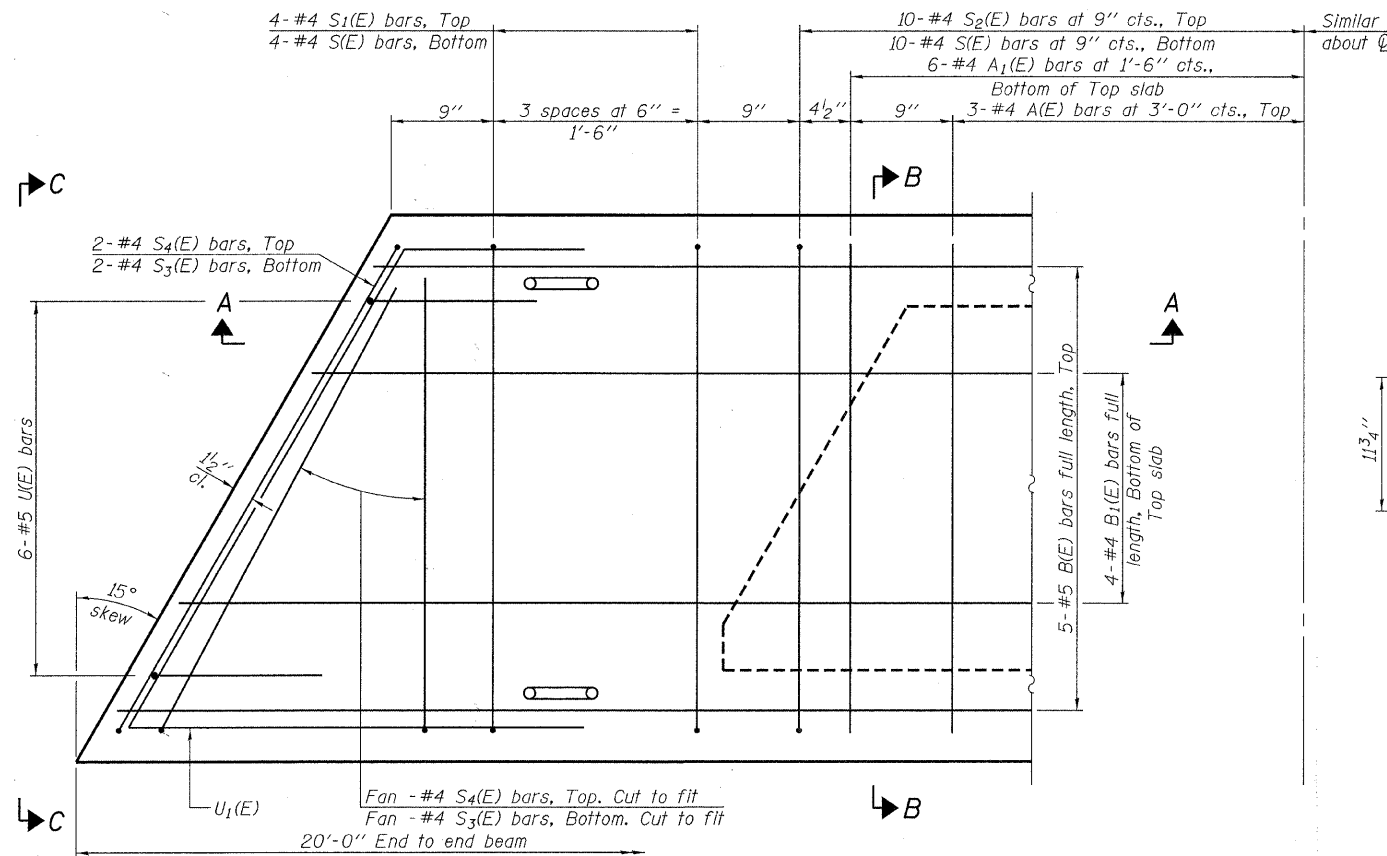
SECTION A-A



SECTION B-B
(Showing dimensions)

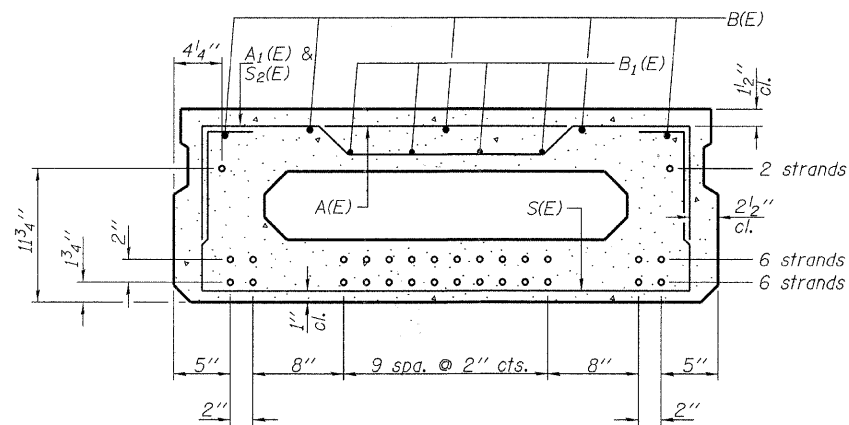


VIEW C-C



PLAN VIEW

Note: Spacing of S(E) and S2(E) bars may be adjusted up to 4" in the immediate area of the transverse tie diaphragms to miss the block outs for the transverse ties.



SECTION B-B

(Showing reinforcement and permissible strand locations)

Note: Place the number of strands specified in each row symmetrically about the centerline of beam in the permissible strand locations shown.

BAR LIST
ONE BEAM ONLY
(For information only)

Bar	No.	Size	Length	Shape
A(E)	6	#4	3'-7"	—
A1(E)	12	#4	3'-10"	—
B(E)	5	#5	19'-8"	—
B1(E)	4	#4	19'-8"	—
S(E)	28	#4	6'-9"	U
S1(E)	8	#4	5'-3"	U
S2(E)	20	#4	5'-6"	U
S3(E)	8	#4	4'-4"	U
S4(E)	8	#4	3'-7"	U
U(E)	12	#5	3'-8"	U
U1(E)	2	#4	7'-1"	C

Note: See sheets 2 & 3 of 12 and 5 & 6 of 12 for additional details and Bill of Material.

MINIMUM BAR LAP

#4 bar = 2'-0"
#5 bar = 2'-6"

PD-1748-L

7-1-10

FILE NAME =	USER NAME =	DESIGNED - V.J.H.	REVISED -	STATE OF ILLINOIS CRAWFORD COUNTY HIGHWAY DEPARTMENT	17" x 48" PPC DECK BEAM STRUCTURE NO. 017-3058	C.H.	SECTION	COUNTY	TOTAL SHEETS	SHEET NO.
HAMPTON, LENZINI AND RENWICK, INC. 208 STEVENSON DRIVE, SUITE 201 SPRINGFIELD, ILLINOIS 62763		CHECKED - S.W.M.	REVISED -			12	08-00091-00-BR	CRAWFORD	16	8
ILLINOIS PROFESSIONAL DESIGN FIRM 15 / PG / SE CORP. 194.00099	PLOT SCALE =	DRAWN - D.A.B.	REVISED -			CONTRACT NO. 95649				
	PLOT DATE = 2/10/2011	CHECKED - D.T.M.	REVISED -			ILLINOIS FED. AID PROJECT				