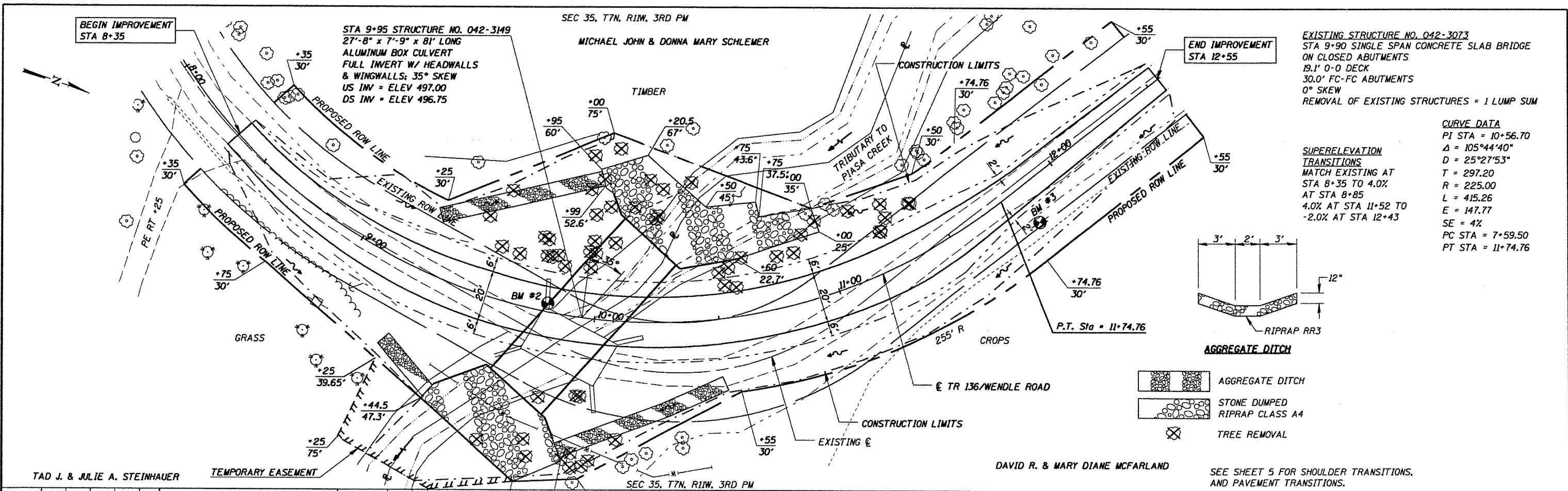


PLAN	DATE
BY	
CHECKED	
NOTED	
FILE NO.	

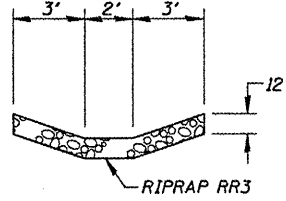
PROFILE	DATE
BY	
CHECKED	
NOTED	
FILE NO.	



EXISTING STRUCTURE NO. 042-3073
 STA 9+90 SINGLE SPAN CONCRETE SLAB BRIDGE
 ON CLOSED ABUTMENTS
 19.1' 0-0 DECK
 30.0' FC-FC ABUTMENTS
 0° SKEW
 REMOVAL OF EXISTING STRUCTURES = 1 LUMP SUM

CURVE DATA
 PI STA = 10+56.70
 $\Delta = 105^\circ 44' 40''$
 $D = 25^\circ 27' 53''$
 $T = 297.20$
 $R = 225.00$
 $L = 415.26$
 $E = 147.77$
 $SE = 4\%$
 $PC STA = 7+59.50$
 $PT STA = 11+74.76$

SUPERELEVATION TRANSITIONS
 MATCH EXISTING AT
 STA 8+35 TO 4.0%
 AT STA 8+85
 4.0% AT STA 11+52 TO
 -2.0% AT STA 12+43

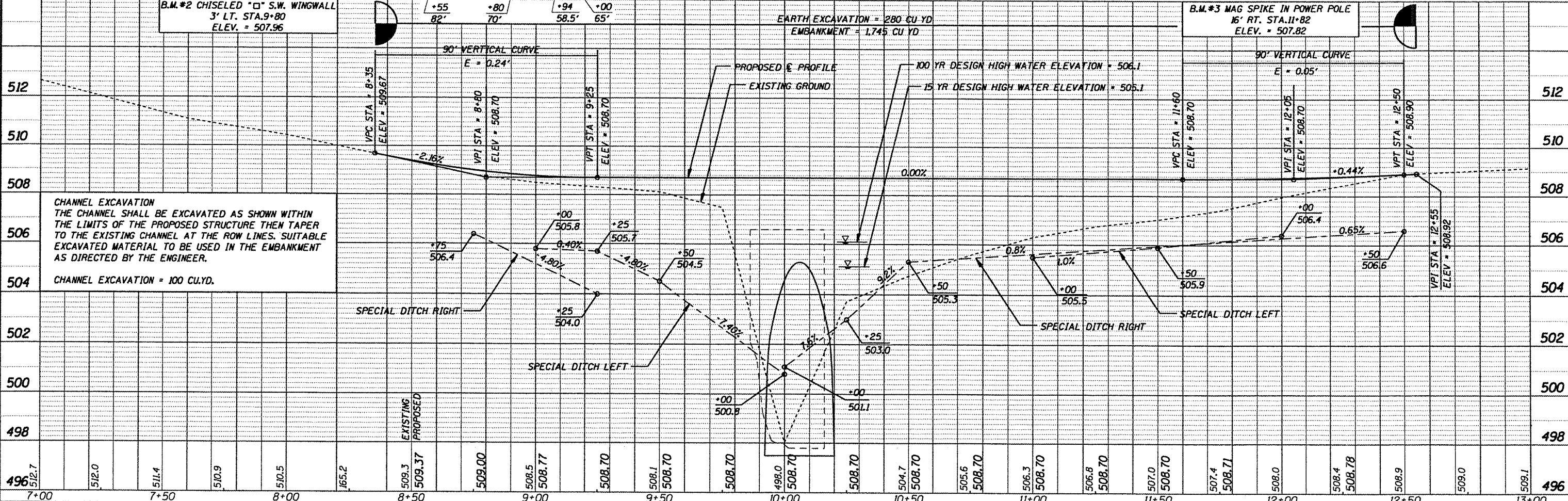


- AGGREGATE DITCH
- STONE DUMPED RIPRAP CLASS A4
- TREE REMOVAL

TAD J. & JULIE A. STEINHAEUER

DAVID R. & MARY DIANE MCFARLAND

SEE SHEET 5 FOR SHOULDER TRANSITIONS, AND PAVEMENT TRANSITIONS.



CHANNEL EXCAVATION
 THE CHANNEL SHALL BE EXCAVATED AS SHOWN WITHIN THE LIMITS OF THE PROPOSED STRUCTURE THEN TAPER TO THE EXISTING CHANNEL AT THE ROW LINES. SUITABLE EXCAVATED MATERIAL TO BE USED IN THE EMBANKMENT AS DIRECTED BY THE ENGINEER.

CHANNEL EXCAVATION = 100 CU.YD.

EARTH EXCAVATION = 280 CU.YD
 EMBANKMENT = 1,745 CU.YD

B.M.#3 MAG SPIKE IN POWER POLE
 16' RT. STA. 11+82
 ELEV. = 507.82

CEC Cummins Engineering Corporation Civil and Structural Engineering	JOB = 2237	DESIGNED - NAK	REVISED -	JERSEY COUNTY TR 136 IMPROVEMENTS	PLAN & PROFILE	TR 136	SECTION 08-05117-00-BR	COUNTY JERSEY	TOTAL SHEETS 10	SHEET NO. 4
	FILE NAME = 2237P&P.dgn	DRAWN - TJD	REVISED -			SCALE: 1" = 40.0000' H / V	SHEET NO. 1 OF 1 SHEET	STA. 8+00 TO STA. 12+55	FED. ROAD DIST. NO. ILLINOIS FED. AID PROJECT	CONTRACT NO. 97459
	PLOT SCALE = 40.0000' H / V	CHECKED -	REVISED -							
	PLOT DATE = 1/26/2011	DATE - 1/26/2011	REVISED -							