

F.A.S. RTE.	SECTION	COUNTY	TOTAL SHEETS	SHEET NO.
TR 136	08-05117-00-BR	JERSEY	10	1
FEDERAL AID PROJECT		ILLINOIS	CONTRACT NO. 97459	

INDEX OF SHEETS

SHEET NO.	TITLE
1	COVER SHEET
2	SUMMARY OF QUANTITIES, GENERAL NOTES, TYPICAL CROSS SECTIONS
3	ALIGNMENT AND CROSS TIES
4	PLAN AND PROFILE SHEET
5	SHOULDER LAYOUT/TRAFFIC CONTROL SIGNS
6-7	CULVERT PLANS
8-10	STATION CROSS SECTIONS

LIST OF ILLINOIS DOT HIGHWAY STANDARDS

515001-03	NAME PLATE FOR BRIDGES
701901-01	TRAFFIC CONTROL DEVICES
BLR 21-8	TYPICAL APPLICATION OF TRAFFIC CONTROL DEVICES FOR CONSTRUCTION ON RURAL LOCAL HIGHWAYS

UTILITY CONTACTS:

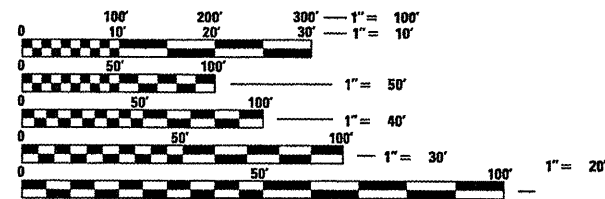
UTILITY TYPE:
TELEPHONE
FRONTIER COMMUNICATIONS
(217) 854-2025
ATTN: MELVIN EADES

UTILITY TYPE:
GAS
NUSTAR PIPELINE
(316) 721-7078
ATTN: DALE SMITH

UTILITY TYPE:
TELEPHONE
AT&T (DISTRIBUTION)
(630) 573-5450
ATTN:

UTILITY TYPE:
WATER
JERSEY COUNTY RURAL WATER CO.
(618) 498-9534
ATTN: GREG BATES

UTILITY TYPE:
TELEPHONE
AT&T (TRANSMISSION)
(847) 420-9115
ATTN: CARL DONAHUE



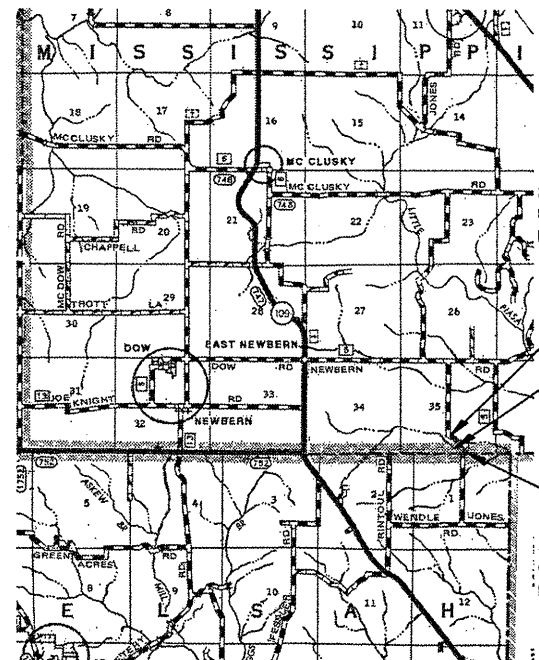
FULL SIZE PLANS HAVE BEEN PREPARED USING STANDARD ENGINEERING SCALES. REDUCED SIZED PLANS WILL NOT CONFORM TO STANDARD SCALES. IN MAKING MEASUREMENTS ON REDUCED PLANS, THE ABOVE SCALES MAY BE USED.

J.U.L.I.E.
JOINT UTILITY LOCATION INFORMATION FOR EXCAVATION
1-800-892-0123
OR 811

STATE OF ILLINOIS
DEPARTMENT OF TRANSPORTATION
DIVISION OF HIGHWAYS
**PLANS FOR PROPOSED
HIGHWAY BRIDGE PROGRAM**

TR 136 (WENDLE RD)
OVER TRIBUTARY TO PIASA CREEK
SECTION 08-05117-00-BR
PROJECT NO. BROS-0083(046)
JERSEY COUNTY
MISSISSIPPI TOWNSHIP
JOB NUMBER C-98-332-09

R. 10 W., 3rd P.M.



END SECTION
STA 12+55

STA 9+95 PROPOSED S.N. 042-3149
27'-8" X 7'-9" X 81'-0" LONG
ALUMINUM BOX CULVERT
W/ FULL INVERT, HEADWALLS
AND WINGWALLS
35° SKEW

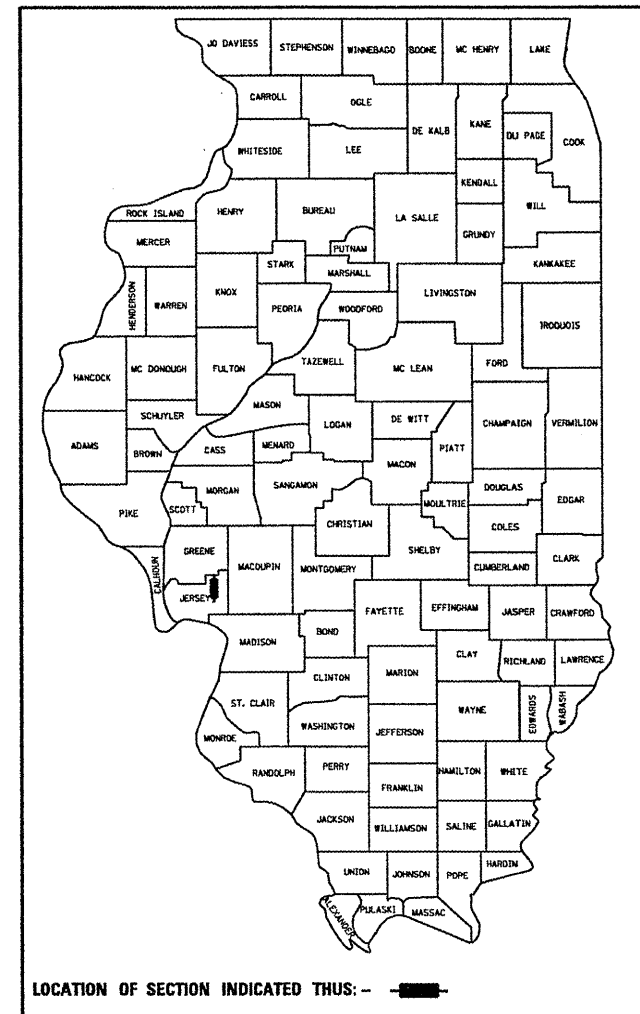
BEGIN SECTION
STA 8+35

LAYOUT

Net Length of Section = 420.00 Feet = 0.080 Miles



FUNCTIONAL CLASSIFICATION : LOCAL ROAD
DESIGN SPEED 30 MPH
CURRENT ADT = <250



LOCATION OF SECTION INDICATED THIS: -

STATE OF ILLINOIS
DEPARTMENT OF TRANSPORTATION

APPROVED February 8 2011

Keri Hall
MISSISSIPPI ROAD DISTRICT COMMISSIONER

APPROVED February 8 2011

Thomas J. Klemes
JERSEY COUNTY ENGINEER

PASSED March 3 2011

Paul
DISTRICT EIGHT ENGINEER OF
LOCAL ROADS AND STREETS

RELEASED FOR
BID BASED ON
LIMITED REVIEW

March 3 2011

Mary C. Yarnie
DEPUTY DIRECTOR OF HIGHWAYS,
REGION FIVE ENGINEER



Michael D. Cummins
ILLINOIS PROFESSIONAL NO. 43244
(Expires 11/30/11)

SUMMARY OF QUANTITIES

CODE	ITEM	UNIT	QUANTITY
20100110	TREE REMOVAL (6 TO 15 UNITS DIAMETER)	UNIT	306
20100210	TREE REMOVAL (OVER 15 UNITS DIAMETER)	UNIT	72
20200100	EARTH EXCAVATION	CU YD	280
20300100	CHANNEL EXCAVATION	CU YD	100
20400800	FURNISHED EXCAVATION	CU YD	1,430
28100807	STONE DUMPED RIPRAP, CLASS A4	TON	244
50100100	REMOVAL OF EXISTING STRUCTURES	EACH	1
51500100	NAME PLATES	EACH	1
59300100	CONTROLLED LOW-STRENGTH MATERIAL	CU YD	44.5
* 67100100	MOBILIZATION	L SUM	1
* 70101830	TRAFFIC CONTROL AND PROTECTION, STANDARD BLR 21	L SUM	1
* X0326210	GEOTECHNICAL FABRIC, SPECIAL	SQ YD	267
* X2501000	SEEDING, CLASS 2 (SPECIAL)	ACRE	0.5
* X2830495	AGGREGATE DITCH (SPECIAL)	TON	83
* X00857	ALUMINUM BOX CULVERT	EACH	1

* SEE SPECIAL PROVISIONS

CONSTRUCTION TYPE CODE: 0011

△ SPECIALTY ITEMS

EARTHWORK

LOCATION	EXCAVATION CU YD	EXCAVATION ADJUSTED FOR SHRINKAGE CU YD	EMBANKMENT CU YD	EARTHWORK BALANCE WASTE (+) OR SHORTAGE (-) CU YD
STA 8+35 TO STA 12+55	280	210	1,745	-1,535
CULVERT EXCAVATION **	140	105	0	105
TOTAL	280	315	1,745	-1,430

** CULVERT EXCAVATION SHALL BE INCLUDED IN THE COST FOR ALUMINUM BOX CULVERT. SUITABLE EXCAVATED MATERIAL SHALL BE PLACED IN EMBANKMENTS.

STONE DUMPED RIPRAP, CLASS A4

LOCATION	GRADATION	TON
LT STA 9+95 TO STA 11+00	RR4	143
RT STA 9+45 TO STA 9+94	RR4	101
TOTAL		244

APPLICATION RATES USED IN QUANTITY CALCULATIONS

Riprap ----- 1.65 Tons/Cu. Yd.

AGGREGATE DITCH (SPECIAL)

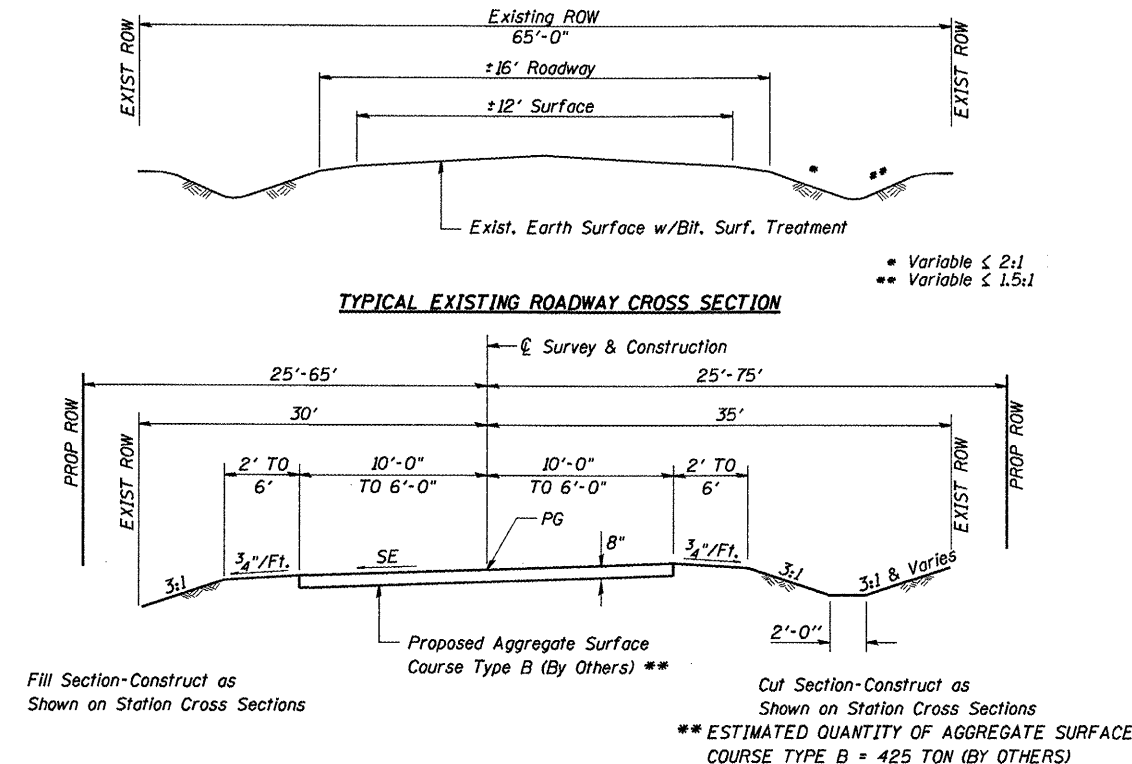
LOCATION	GRADATION	TON
LT STA 9+23 TO STA 9+95	RR3	33
RT STA 9+25 TO STA 9+47	RR4	14
RT STA 9+94 TO STA 10+50	RR3	36
TOTAL		83

COMMITMENTS

NONE

TREE REMOVAL

LOCATION	6 TO 15 UNITS DIAMETER UNIT	OVER 15 UNITS DIAMETER UNIT
31' LT STA 9+49	12	
41' LT STA 9+58	9	
22' LT STA 9+74	9	
31' LT STA 9+74	12	
28' LT STA 9+78	7	
20' LT STA 9+79	6	
26' LT STA 9+92		18
50' LT STA 9+94	8	
17' LT STA 9+97	6	
40' LT STA 9+98	6	
24' LT STA 9+99	12	
55' LT STA 10+00	6	
43' LT STA 10+02	6	
28' LT STA 10+05	7	
44' LT STA 10+17		24
54' LT STA 10+21	6	
44' LT STA 10+28	8	
53' LT STA 10+42	6	
16' LT STA 10+52		30
18' LT STA 10+58	14	
24' LT STA 10+92	12	
27' LT STA 11+00	6	
32' LT STA 11+18	8	
16' LT STA 11+22	10	
17' LT STA 11+28	10	
22' LT STA 11+39	9	
20' LT STA 11+48	9	
50' RT STA 9+82	7	
55' RT STA 9+94	8	
29' RT STA 9+96	12	
29' RT STA 9+96	12	
29' RT STA 9+97	9	
29' RT STA 9+97	9	
29' RT STA 9+97	9	
53' RT STA 9+98	7	
59' RT STA 9+98	10	
59' RT STA 9+98	10	
55' RT STA 10+04	9	
TOTAL	306	72



TYPICAL PROPOSED ROADWAY CROSS SECTION
STA 8+35 TO STA 12+55

PAVEMENT WIDTH TRANSITIONS:
12' TO 20' STA 8+35 TO STA 9+55
20' TO 12' STA 11+35 TO STA 12+55

PAVEMENT SLOPE TRANSITIONS:
EXISTING SLOPE TO 4.0% STA 8+35 TO STA 8+85
4.0% TO -2.0% RT STA 11+52 TO RT STA 12+43
-4.0% TO -2.0% LT STA 11+52 TO LT STA 11+83
-2.0% TO EXISTING SLOPE STA 12+43 TO STA 12+55

- GENERAL NOTES**
- THE AREA TO BE SEEDED SHALL CONSIST OF ALL DISTURBED EARTH SURFACES WITHIN THE RIGHT OF WAY AS DIRECTED BY THE ENGINEER. FERTILIZER NUTRIENTS SHALL BE APPLIED AT A RATIO OF 1:1 AND AT A RATE OF 90 POUNDS PER ACRE PER NUTRIENT. MULCH SHALL BE APPLIED AT A RATE OF 2 TONS PER ACRE.
 - SEEDING CLASS 2 (SPECIAL) = 0.5 ACRE
THE AREA OF DISTURBED EARTH SURFACES OUTSIDE THE RIGHT-OF-WAY SHALL BE SEEDED AS DIRECTED BY THE ENGINEER, COST TO CONTRACTOR.
 - ALL ELEVATIONS SHOWN ON THE PLANS ARE BASED ON NORTH AMERICAN VERTICAL DATUM OF 1988 (NAVD88).
 - THE LOCATIONS OF EXISTING WATER MAINS, GAS MAINS, ELECTRIC POWER LINES, TELEPHONE LINES, AND OTHER UTILITIES AS SHOWN ON THE PLANS ARE BASED ON CAREFUL FIELD INVESTIGATION AND THE BEST INFORMATION AVAILABLE, BUT ARE NOT GUARANTEED. IT SHALL BE THE CONTRACTOR'S RESPONSIBILITY TO ASCERTAIN THEIR EXACT LOCATION FROM THE UTILITY COMPANIES, MUNICIPALITIES AND FIELD INSPECTION. SEE STANDARD SPECIFICATIONS.
 - IF ASH TREES ARE REMOVED ON THE PROJECT, THE CONTRACTOR SHALL BECOME FAMILIAR WITH AND COMPLY WITH MEASURES SPECIFIED BY THE ILLINOIS DEPARTMENT OF AGRICULTURE (IDOA) TO PREVENT THE SPREAD OF THE EMERALD ASH BORER. THE IDOA INFORMATION FOR ASH TREE REMOVAL CAN BE FOUND ON THE IDOA WEBSITE AT [HTTP://WWW.AGR.STATE.IL.US/EAB](http://www.agr.state.il.us/eab).
 - THE CONTRACTOR SHALL NOTIFY THE ENGINEER SEVEN CALENDAR DAYS PRIOR TO OPENING THE ROADWAY TO TRAFFIC SO THAT WARNING SIGNS CAN BE ERECTED ON THE APPROACHES TO THE CURVED ROADWAY. WARNING SIGNS WILL BE ERECTED BY OTHERS.



JOB = 2237	DESIGNED - NAK	REVISED -
FILE NAME = #FILES#	DRAWN - AJH	REVISED -
PLOT SCALE = #SCALE#	CHECKED - NAK	REVISED -
PLOT DATE = #DATE#	DATE - 1/26/2011	REVISED -

**STATE OF ILLINOIS
DEPARTMENT OF TRANSPORTATION**

**SUMMARY OF QUANTITIES, TYPICAL CROSS SECTIONS,
GENERAL NOTES**

T.R.	SECTION	COUNTY	TOTAL SHEETS	SHEET NO.
136	08-05117-00-BR	JERSEY	10	2
CONTRACT NO. 97459			ILLINOIS FED. AID PROJECT	

DATE	
BY	
PLAN	
SURVEYED	
PLOTTED	
CHECKED	
DATE	
BY	
NOTE BOOK	
NO.	
ADD FILE NAME	

DATE	
BY	
PROFILE	
SURVEYED	
PLOTTED	
CHECKED	
DATE	
BY	
NOTE BOOK	
NO.	
STRUCTURE NOTATIONS	

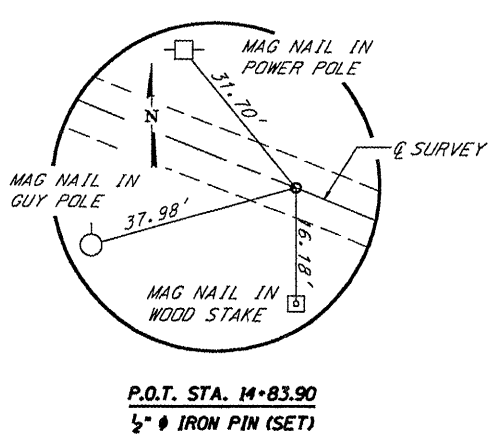
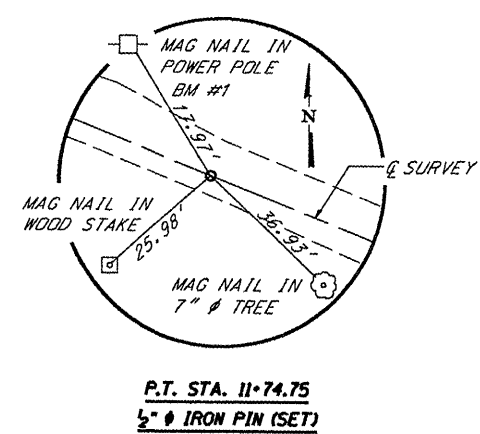
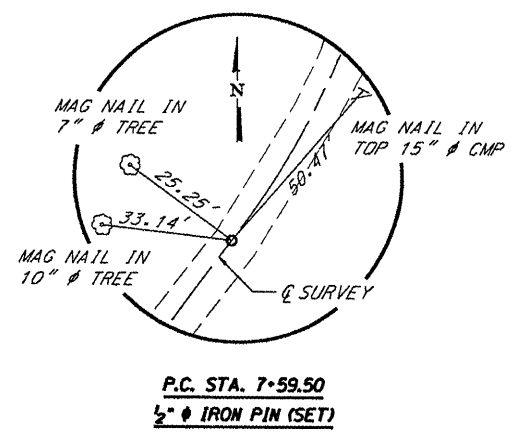
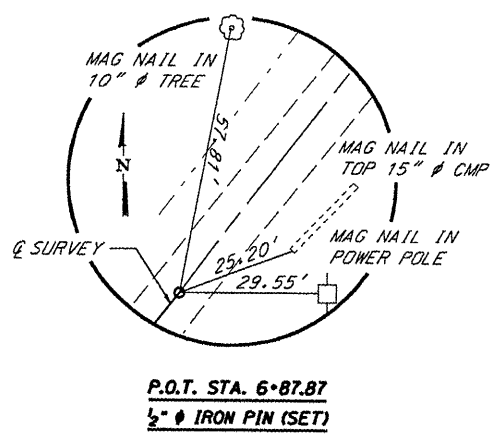
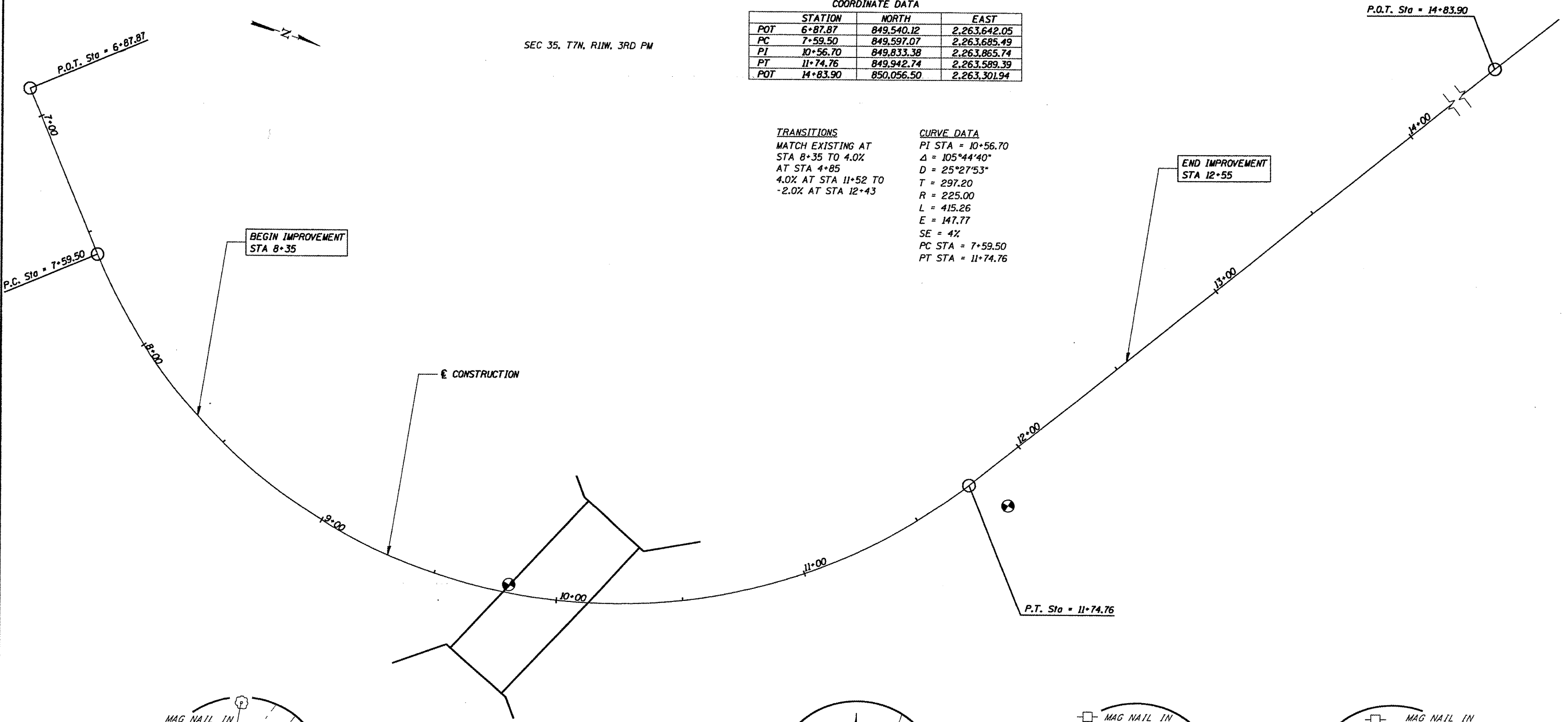
SEC 35, T7N, R11W, 3RD PM

COORDINATE DATA

STATION	NORTH	EAST	
POT	6+87.87	849,540.12	2,263,642.05
PC	7+59.50	849,597.07	2,263,685.49
PI	10+56.70	849,833.38	2,263,865.74
PT	11+74.76	849,942.74	2,263,589.39
POT	14+83.90	850,056.50	2,263,301.94

TRANSITIONS
MATCH EXISTING AT
STA 8+35 TO 4.0%
AT STA 4+85
4.0% AT STA 11+52 TO
-2.0% AT STA 12+43

CURVE DATA
PI STA = 10+56.70
Δ = 105°44'40"
D = 25°27'53"
T = 297.20
R = 225.00
L = 415.26
E = 147.77
SE = 4%
PC STA = 7+59.50
PT STA = 11+74.76



CEC Civil and Structural Engineering	Cummins Engineering Corporation	JOB = 2237	DESIGNED - NAK	REVISED -
		FILE NAME = 2237a1.dgn	DRAWN - AJH	REVISED -
		PLDT SCALE = 40,000 sf / IN.	CHECKED -	REVISED -
		PLDT DATE = 1/26/2011	DATE - 1/26/2011	REVISED -

**JERSEY COUNTY
TR 136 IMPROVEMENTS**

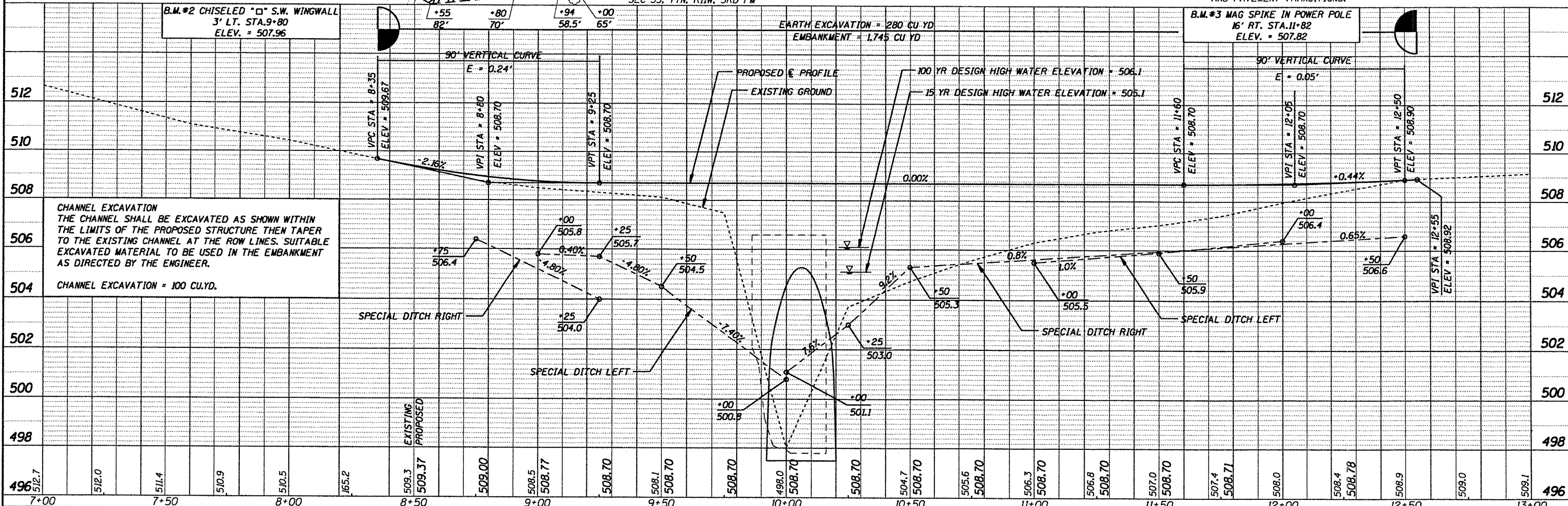
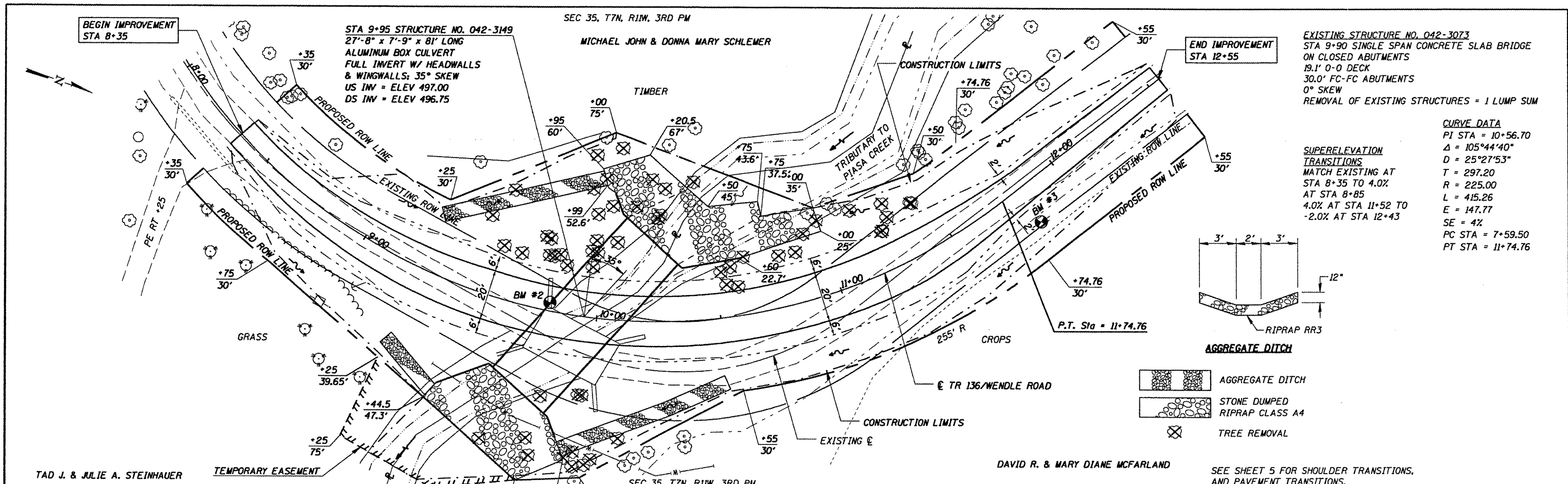
SCALE:	SHEET NO.	OF	SHEETS	STA. 6+87.87 TO STA. 14+83.90
--------	-----------	----	--------	-------------------------------

TR	SECTION	COUNTY	TOTAL SHEETS	SHEET NO.
136	08-05117-00-BR	JERSEY	10	3
FED. ROAD DIST. NO. ILLINOIS FED. AID PROJECT				

CONTRACT NO. 97459

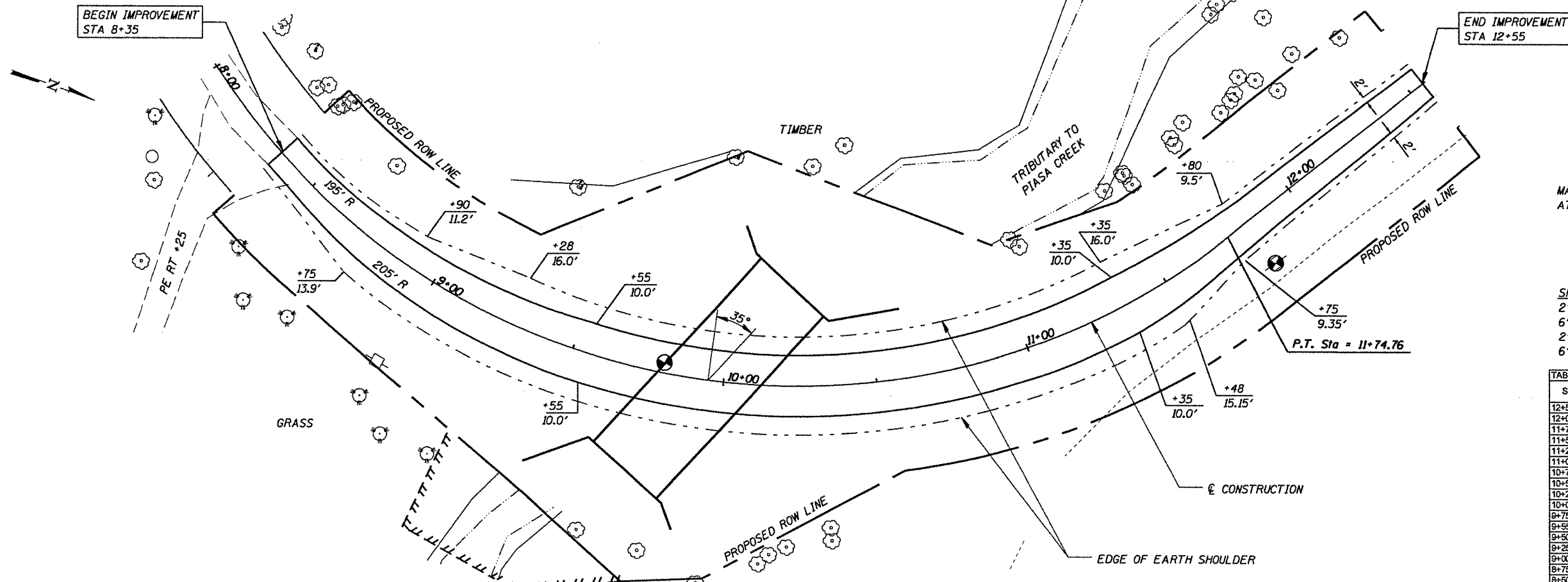
PLAN	DATE
BY	
REVISIONS	
NO.	
DATE	
BY	
REVISIONS	
NO.	
DATE	
BY	
REVISIONS	
NO.	
DATE	

PROFILE	DATE
BY	
REVISIONS	
NO.	
DATE	
BY	
REVISIONS	
NO.	
DATE	



CEC Cummins Engineering Corporation Civil and Structural Engineering	JOB = 2237	DESIGNED - NAK	REVISED -	JERSEY COUNTY TR 136 IMPROVEMENTS	PLAN & PROFILE	TR	SECTION	COUNTY	TOTAL SHEETS	SHEET NO.
	FILE NAME = 2237P&P.dgn	DRAWN - TJD	REVISED -			136	08-05117-00-BR	JERSEY	10	4
	PLOT SCALE = 40,0000 sf / IN.	CHECKED -	REVISED -			CONTRACT NO. 97459				
	PLOT DATE = 1/26/2011	DATE - 1/26/2011	REVISED -			FED. ROAD DIST. NO. ILLINOIS FED. AID PROJECT				

PLAN	SURVEYED	BY	DATE
	PLOTTED		
	CHECKED		
	REVISIONS		
	NO. OF WAYS CHECKED		
	PAID FILE NAME		
	NO.		

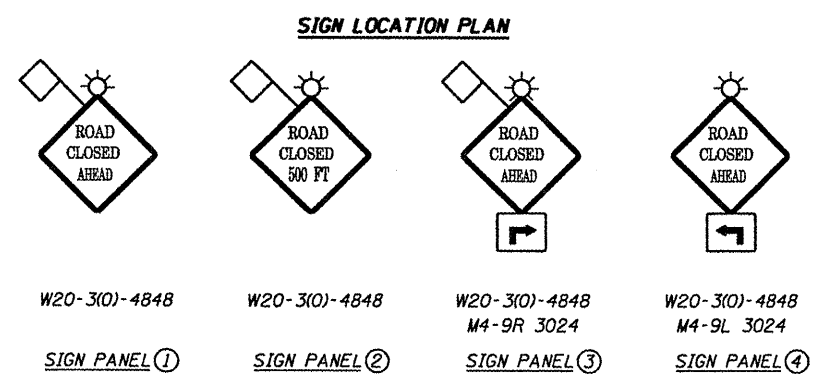
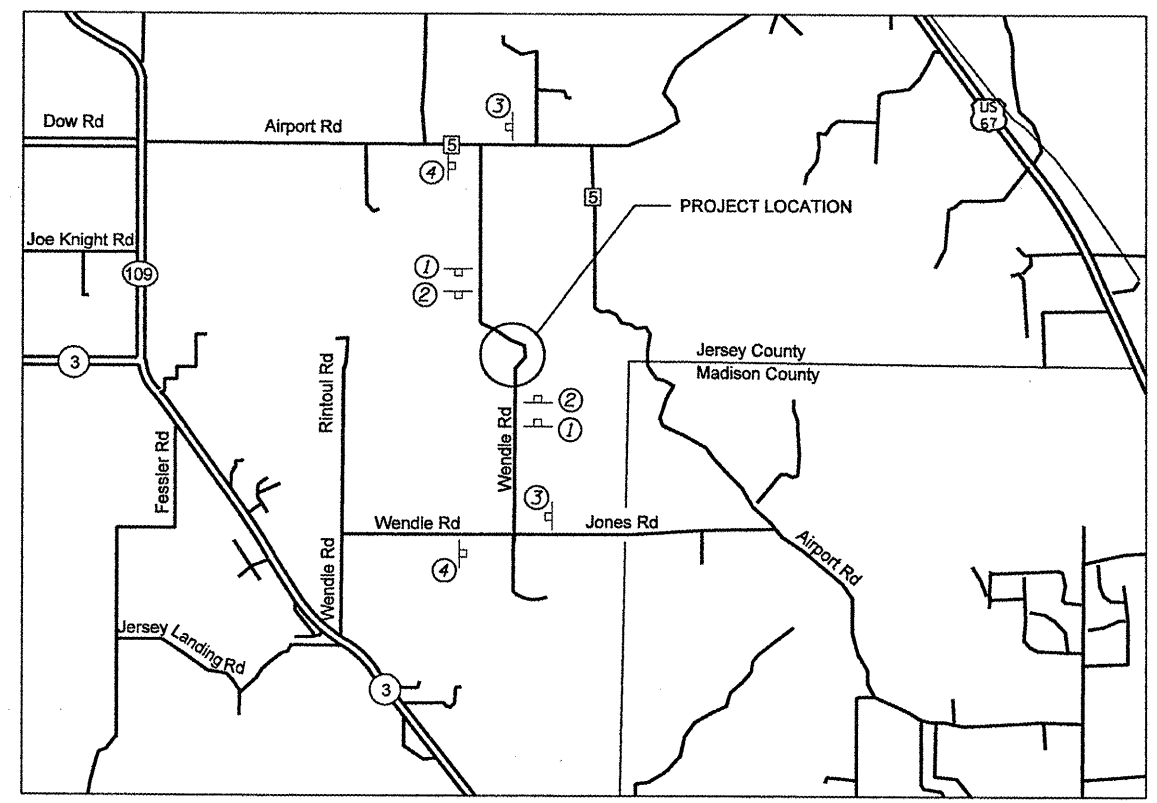


MATCH EXISTING ROADWAY
AT STA 8+35 AND STA 12+55

SHOULDER WIDTH TRANSITIONS:
 2' TO 6' LT - STA 8+90 TO STA 9+28
 6' TO 2' LT - STA 11+35 TO STA 11+80
 2' TO 6' RT - STA 8+35 TO STA 8+75
 6' TO 2' RT - STA 11+48 TO STA 11+75

STA	LT SHOULDER		LT EDGE OF PVT		RT EDGE OF PVT		RT SHOULDER	
	OFFSET	ELEV	OFFSET	ELEV	OFFSET	ELEV	OFFSET	ELEV
12+50	8.07	508.65	6.06	508.77	5.75	508.77	7.75	508.65
12+40	8.07	508.47	6.90	508.60	6.80	508.80	8.80	508.67
11+75	10.62	508.34	7.84	508.51	7.32	508.89	9.35	508.76
11+50	14.78	507.98	8.43	508.32	8.98	508.08	14.82	508.71
11+25	18.00	507.93	10.00	508.30	10.00	508.10	18.00	508.73
11+00	18.00	507.93	10.00	508.30	10.00	508.10	18.00	508.73
10+75	18.00	507.93	10.00	508.30	10.00	508.10	18.00	508.73
10+50	18.00	507.93	10.00	508.30	10.00	508.10	18.00	508.73
10+25	18.00	507.93	10.00	508.30	10.00	508.10	18.00	508.73
10+00	18.00	507.93	10.00	508.30	10.00	508.10	18.00	508.73
9+75	18.00	507.93	10.00	508.30	10.00	508.10	18.00	508.73
9+55	18.00	507.93	10.00	508.30	10.00	508.10	18.00	508.73
9+50	18.00	507.92	9.87	508.31	10.00	508.10	18.00	508.73
9+25	15.84	507.91	8.87	508.35	9.72	508.08	15.71	508.71
9+00	13.02	508.14	8.06	508.45	9.02	508.13	13.02	508.76
8+75	10.07	508.55	7.44	508.70	7.91	508.28	13.92	508.94
8+50	9.03	508.87	7.02	508.07	6.42	508.51	9.26	508.33

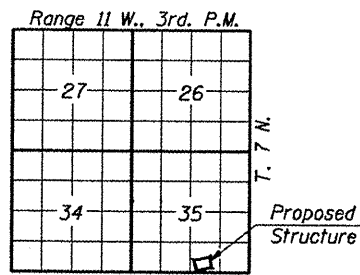
PROFILE	SURVEYED	BY	DATE
	PLOTTED		
	CHECKED		
	REVISIONS		
	NO. OF WAYS CHECKED		
	STRUCTURE NOTATION		
	NO.		



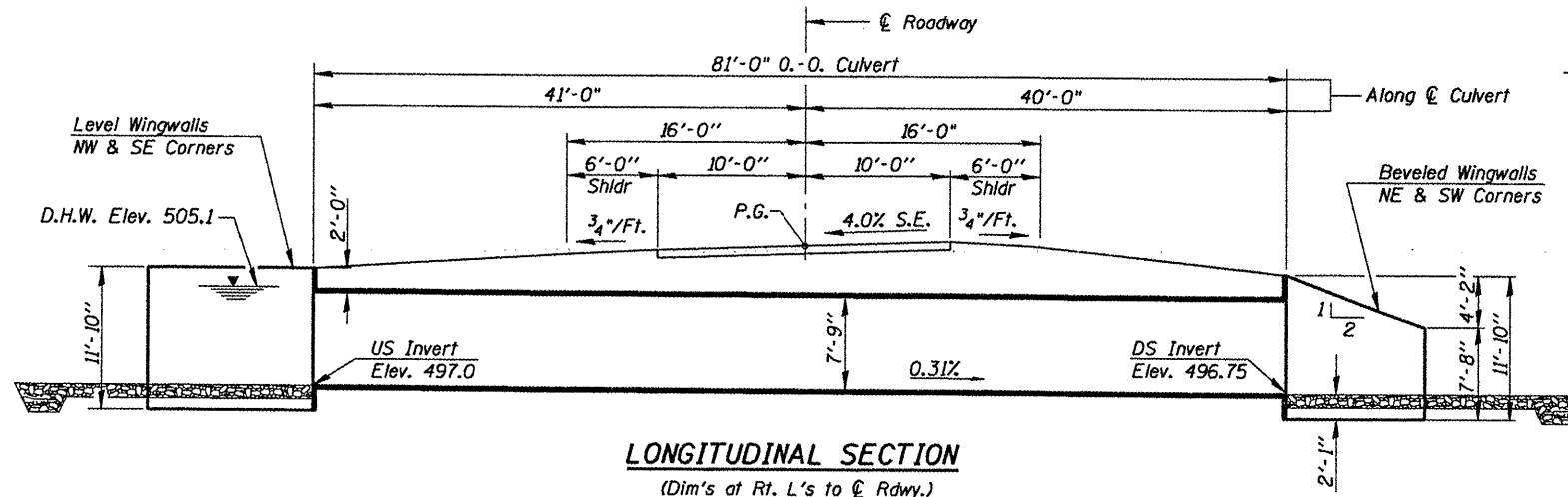
SEE STANDARDS 701901 AND BLR 21
FOR DETAILS NOT SHOWN

- TYPE B MONODIRECTIONAL FLASHING LIGHT
- 18" x 18" ORANGE FLAG

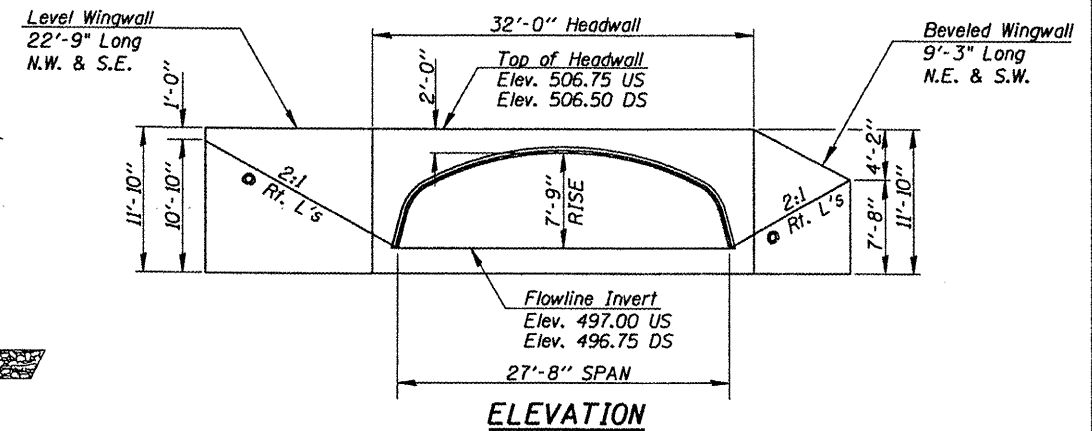
TR 136 (WENDLE RD) SHALL BE CLOSED TO ALL TRAFFIC DURING THE CONSTRUCTION OF THIS PROJECT. TYPE 3 BARRICADES SHALL EXTEND FROM SHOULDER TO SHOULDER AS DETAILED ON STANDARD 701901. BARRICADES AT THE SOUTH END OF THE PROJECT SHALL BE LOCATED NORTH OF THE PRIVATE ENTRANCE AT STA 8+25. ALL SIGNS, LIGHTS, AND FLAGS ARE INCLUDED IN THE COST FOR THE TRAFFIC CONTROL AND PROTECTION STANDARD BLR-21.



LOCATION PLAN



LONGITUDINAL SECTION
(Dim's at Rt. L's to C Roadway.)



ELEVATION

WATERWAY INFORMATION

Drainage Area	1.43 Sq. Mi.
Existing Bridge Opening (15 yr.)	132 Sq. Ft.
Proposed Bridge Opening (15 yr.)	175 Sq. Ft.
Existing Bridge Opening (100 yr.)	152 Sq. Ft.
Proposed Bridge Opening (100 yr.)	175 Sq. Ft.
Design Frequency Discharge (15 yr.)	885 C.F.S.
Created Head (15 yr.)	0.1 Ft.
Discharge (100 yr.)	1475 C.F.S.
Created Head (100 yr.)	0.7 Ft.

GENERAL NOTES

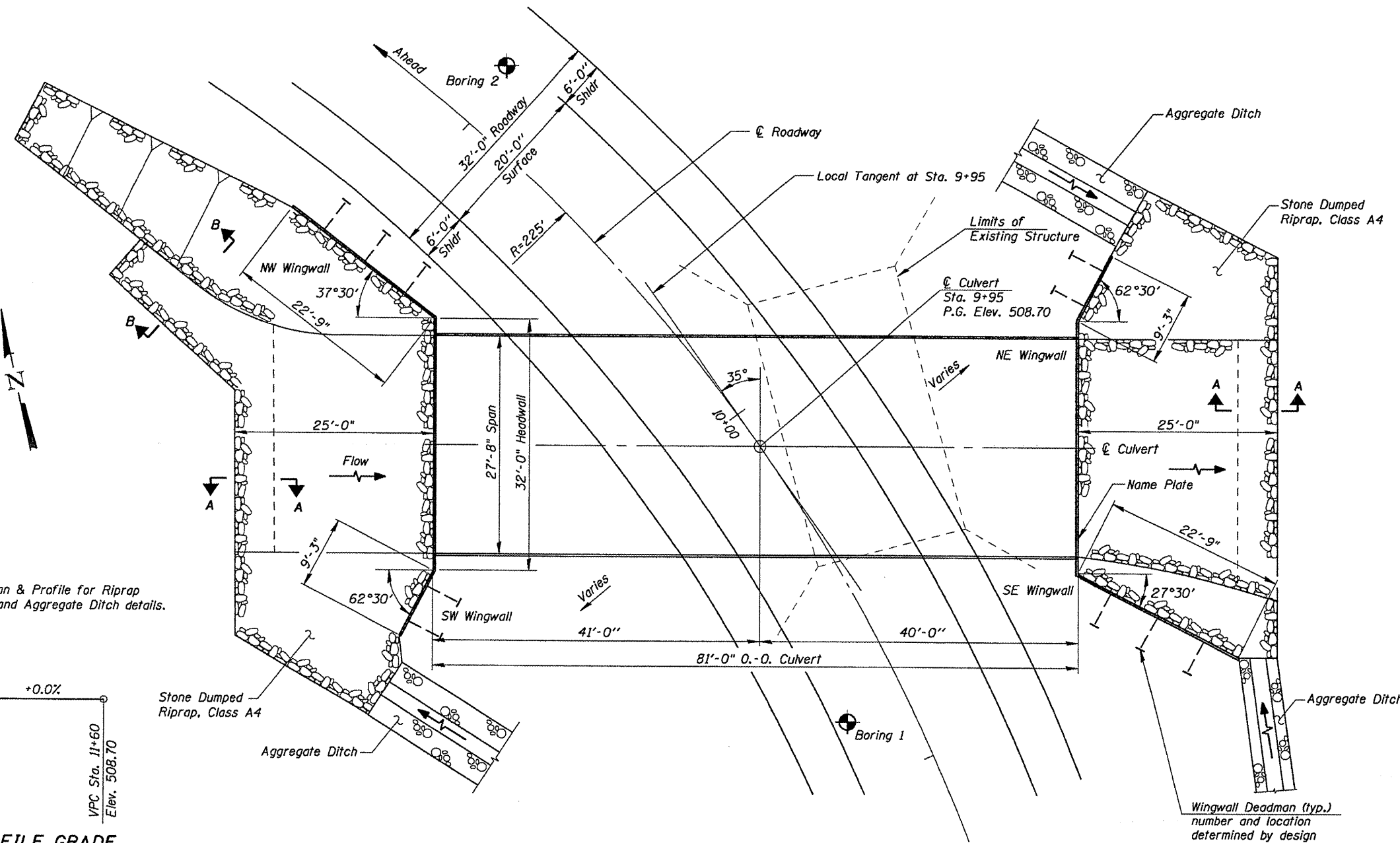
See Special Provisions for Boring Data.
For culvert installation and backfill procedures, see Special Provisions.
Layout of slope protection system may be varied in the field to suit ground conditions as directed by the Engineer.

TOTAL BILL OF MATERIAL

ITEM	UNIT	TOTAL
* Aluminum Box Culvert (27'-8" x 7'-9")	Each	1
Stone Dumped Riprap, Class A4	Ton	244
Controlled Low Strength Material	Cu. Yd.	44.5
* Geotechnical Material for Bedding Material	Sq. Yd.	267
Name Plates	Each	1

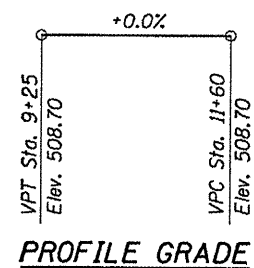
* See Special Provisions

GENERAL PLAN & ELEVATION
TR 136 OVER TRIBUTARY TO PIASA CREEK
SECTION 08-05117-00-BR
JERSEY COUNTY
STATION 9+95
STRUCTURE NO. 042-3149



PLAN

Note:
See Plan & Profile for Riprap layout and Aggregate Ditch details.



PROFILE GRADE

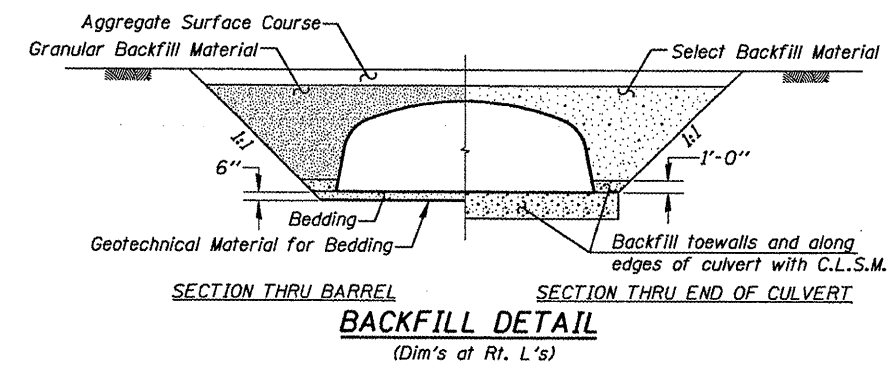
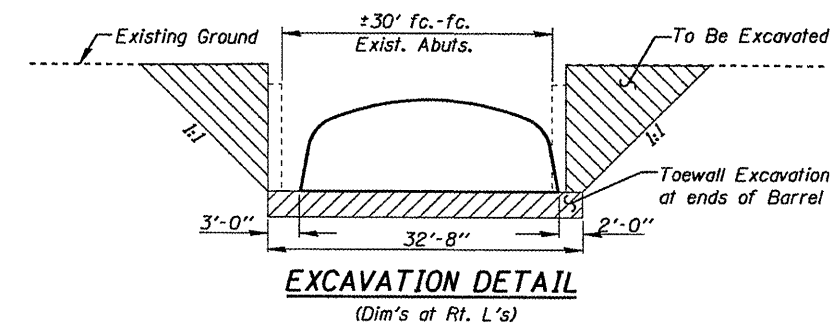
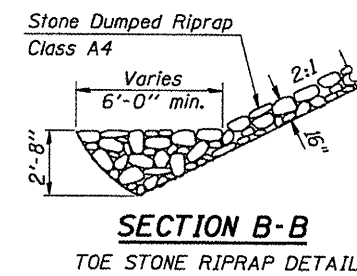
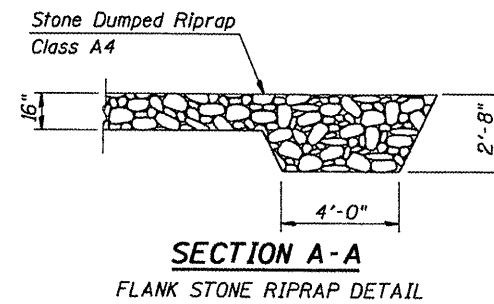
CEC Cummins Engineering Corporation Civil and Structural Engineering	JOB = 2237	DESIGNED T.S.H.
	FILE = 2237culv.dgn	CHECKED M.D.C.
	DATE = 1/28/2011	DRAWN T.S.H.
		CHECKED M.D.C.

Sheet 1 of 2	RTE.	SECTION	COUNTY	TOTAL SHEETS	SHEET NO.
	TR 136	08-05117-00-BR	JERSEY	10	6
	MISSISSIPPI ROAD DISTRICT		CONTRACT NO. 97459		
	FED. ROAD DIST. NO.	ILLINOIS FED. AID PROJECT			

TRIBUTARY TO PIASA CREEK
 BUILT 20... BY
 JERSEY COUNTY
 MISSISSIPPI ROAD DISTRICT
 SEC. 08-05117-00-BR
 STA 9+95
 STR. NO. 042-3149 LOADING HS20

LETTERING FOR NAME PLATE

See Std. 515001
 Name Plate shall be Bolted to Aluminum
 Headwall. See Plan View for Location.



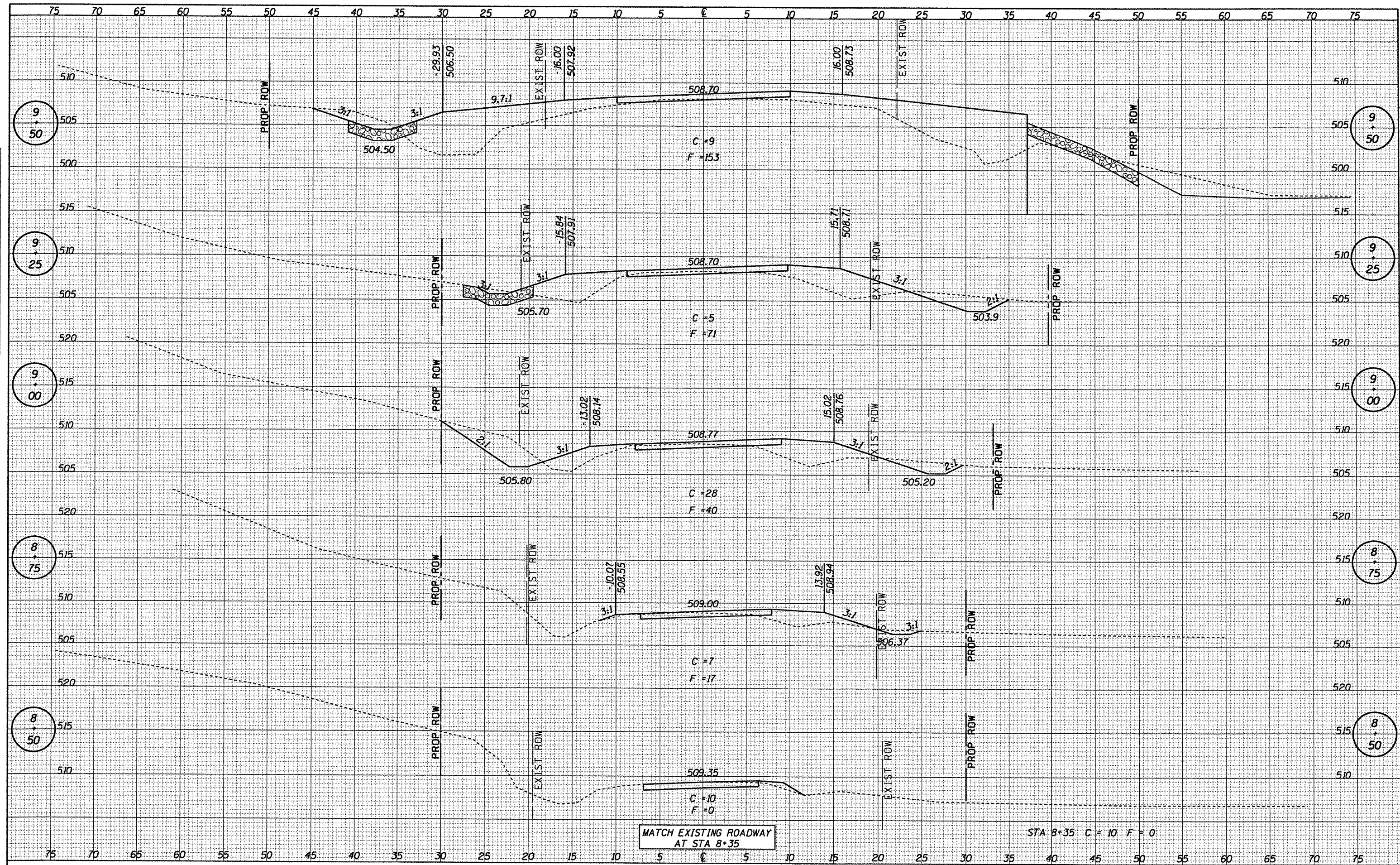
CULVERT DETAILS
TR 136 OVER TRIBUTARY TO PIASA CREEK
SECTION 08-05117-00-BR
JERSEY COUNTY
STATION 9+95
STRUCTURE NO. 042-3149

CEC Civil and Structural Engineering	Cummins Engineering Corporation	JOB = 2237	DESIGNED	T.S.H.
		FILE = 2237culv.dgn	CHECKED	M.D.C.
		DATE = 1/26/2011	DRAWN	T.S.H.
			CHECKED	M.D.C.

Sheet 2 of 2	RTE.	SECTION	COUNTY	TOTAL SHEETS	SHEET NO.
	TR 136	08-05117-00-BR	JERSEY	10	7
	MISSISSIPPI ROAD DISTRICT		CONTRACT NO. 97459		
	FED. ROAD DIST. NO.	ILLINOIS	FED. AID PROJECT		

DATE	
BY	
SURVEYED	
PLOTTED	
REPLANE	
NOTE BOOK	
AREAS CHECKED	
NO.	

DATE	
BY	
SURVEYED	
PLOTTED	
REPLANE	
NOTE BOOK	
AREAS CHECKED	
NO.	



CEC Cummins
Engineering
Corporation
Civil and Structural Engineering

JOB = 2237
FILE NAME = 2237.ssd.dgn
PLOT SCALE = 10.00 Ft / IN.
PLOT DATE = 1/26/2011

DESIGNED	-	NAK	REVISED	-
DRAWN	-	AJH	REVISED	-
CHECKED	-		REVISED	-
DATE	-	1/26/2011	REVISED	-

**JERSEY COUNTY
TR 136 IMPROVEMENTS**

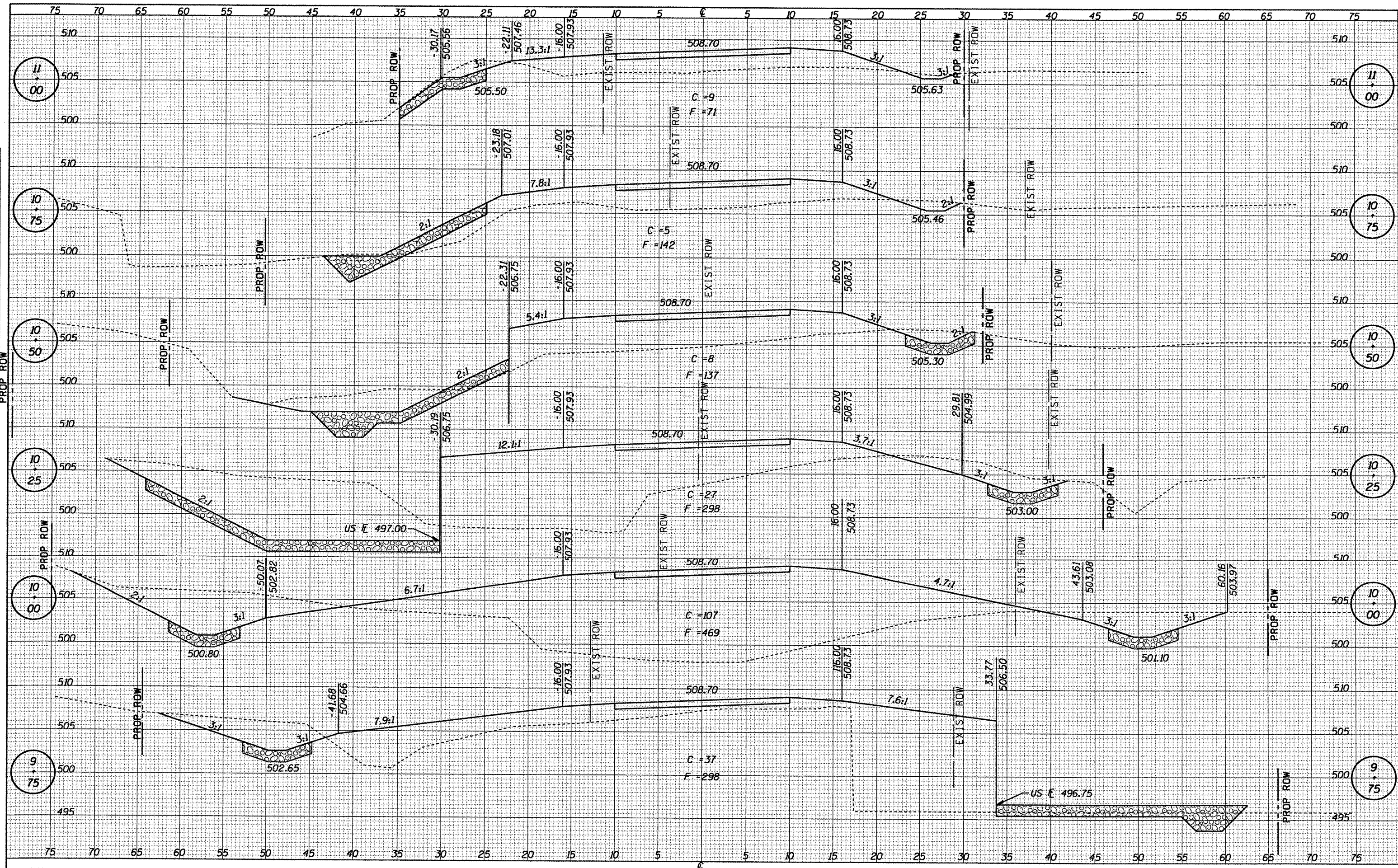
CROSS SECTIONS - TR 136

STA. TO STA.

TR	SECTION	COUNTY	TOTAL SHEETS	SHEET NO.
136	08-05117-00-BR	JERSEY	10	8
FED. ROAD DIST. NO.			ILLINOIS FED. AID PROJECT	
			CONTRACT NO. 97459	

DATE	
BY	
SURVEYED	
PLOTTED	
NOTED	
AREAS CHECKED	

DATE	
BY	
SURVEYED	
PLOTTED	
NOTED	
AREAS CHECKED	



CEC Cummins Engineering Corporation
Civil and Structural Engineering

JOB = 2237	DESIGNED - NAK	REVISED -
FILE NAME = 2237*sec.dgn	DRAWN - AJH	REVISED -
PLT SCALE = 10.00 Ft / IN.	CHECKED -	REVISED -
PLDT DATE = 1/26/2011	DATE - 1/26/2011	REVISED -

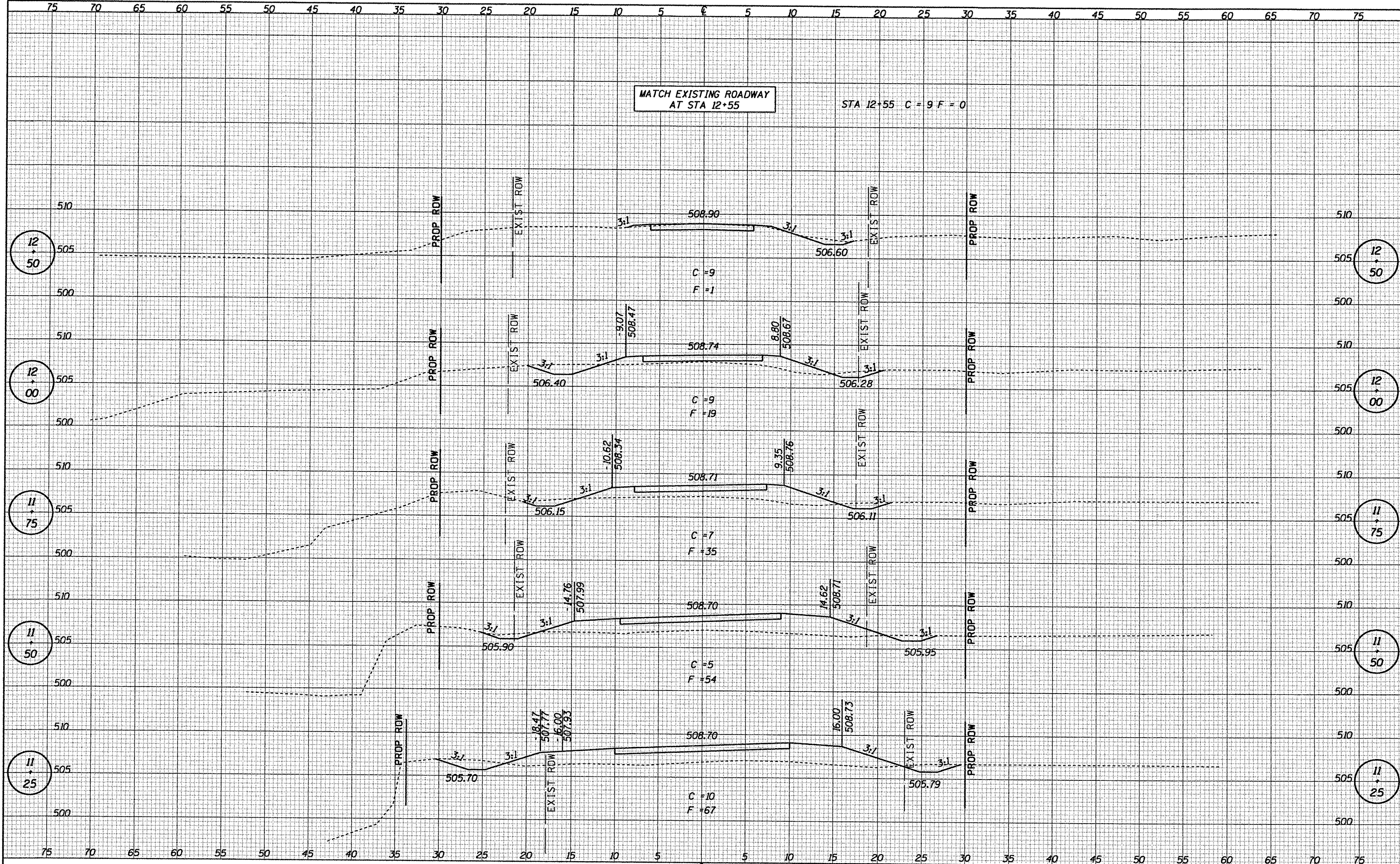
**JERSEY COUNTY
TR 136 IMPROVEMENTS**

CROSS SECTIONS - TR 136	
STA.	TO STA.

TR	SECTION	COUNTY	TOTAL SHEETS	SHEET NO.
136	08-05117-00-BR	JERSEY	10	9
FED. ROAD DIST. NO.		ILLINOIS FED. AID PROJECT		
CONTRACT NO. 97459				

DATE	
BY	
FINAL SURVEY	
NOTED	
PLOTTED	
TEMPLATE	
NOTE BOOK	
AREAS	
CHECKED	
NO.	

DATE	
BY	
ORIGINAL SURVEY	
NOTED	
PLOTTED	
TEMPLATE	
NOTE BOOK	
AREAS	
CHECKED	
NO.	



CEC Cummins Engineering Corporation
Civil and Structural Engineering

JOB = 2237
FILE NAME = 2237*sec.dgn
PLOT SCALE = 18.00 Ft / IN.
PLOT DATE = 1/26/2011

DESIGNED -	NAK
DRAWN -	AJH
CHECKED -	
DATE -	1/26/2011
REVISED -	
REVISED -	
REVISED -	
REVISED -	

**JERSEY COUNTY
TR 136 IMPROVEMENTS**

CROSS SECTIONS - TR 136

STA. TO STA.

TR	SECTION	COUNTY	TOTAL SHEETS	SHEET NO.
136	08-05117-00-BR	JERSEY	10	10
CONTRACT NO. 97459				
FED. ROAD DIST. NO. ILLINOIS FED. AID PROJECT				