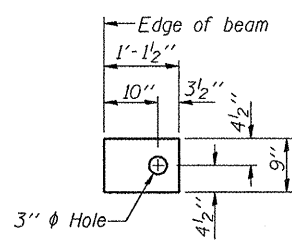


FABRIC BEARING PAD
(Interior)

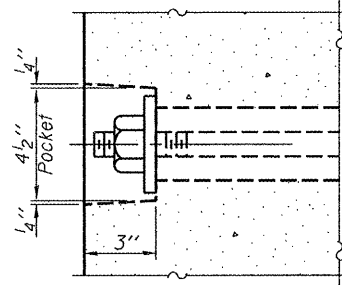


FABRIC BEARING PAD
(Exterior)

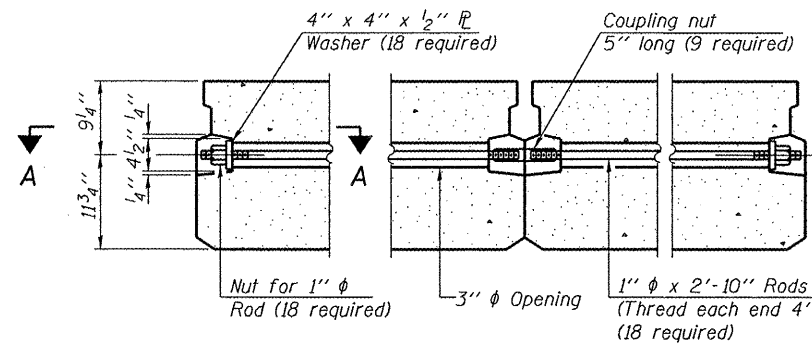
FIXED

Notes:

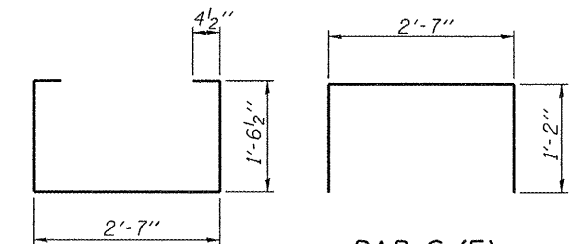
- All bearing pads shall be 1" thick.
- Omit holes when using expansion bearings.
- Expansion bearing pad shall be bonded to the substructure.



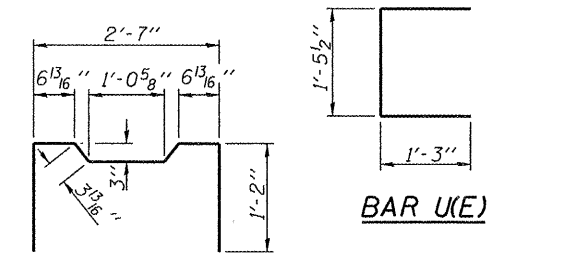
SECTION A-A



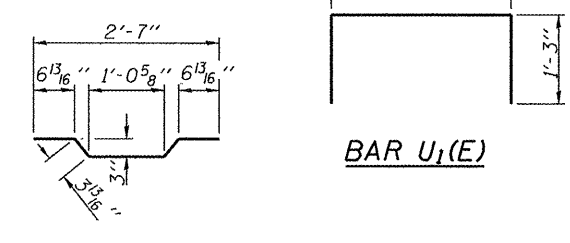
TYPICAL TRANSVERSE TIE ASSEMBLY



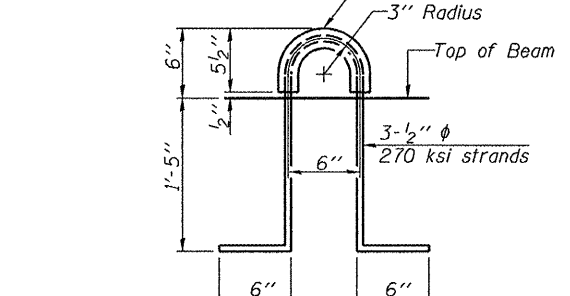
BAR S1(E)



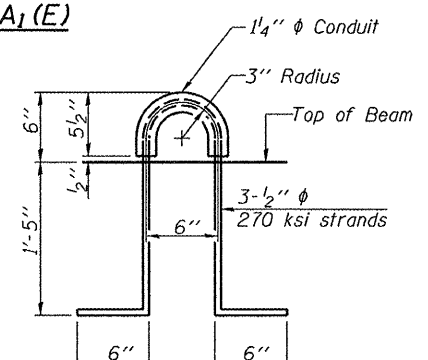
BAR S2(E)



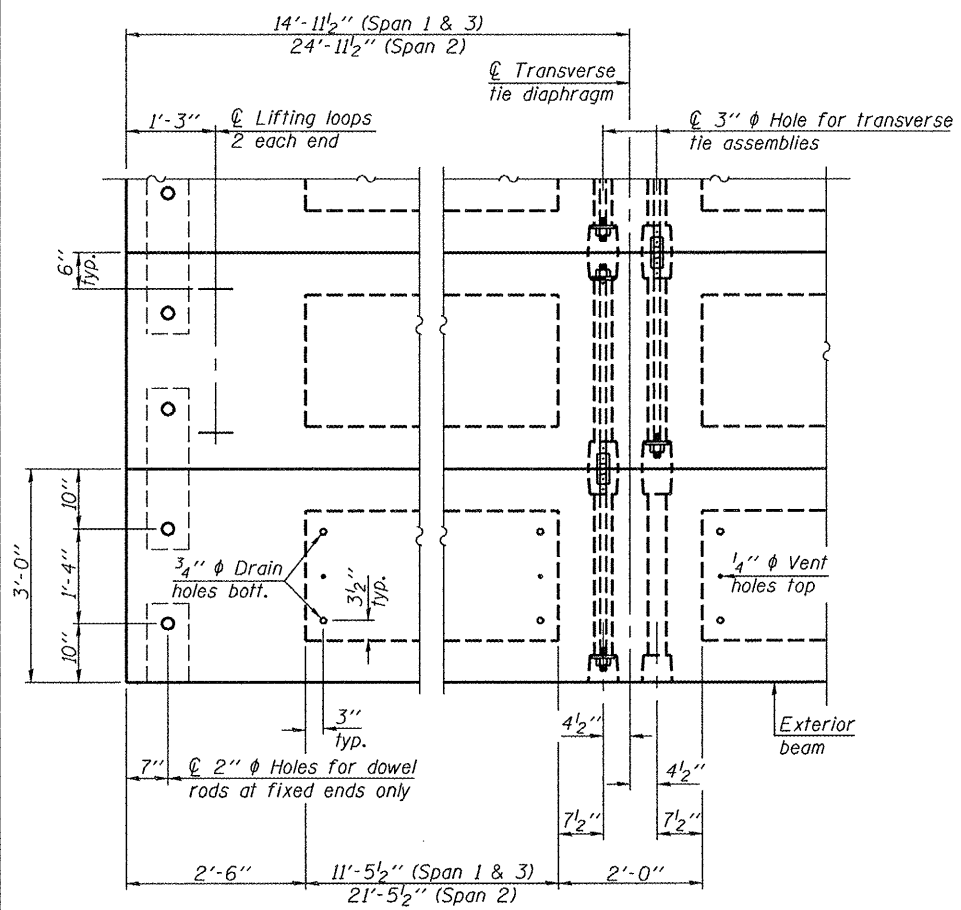
BAR U1(E)



BAR A1(E)



LIFTING LOOP DETAIL



PLAN VIEW

NOTES

- Prestressing steel shall be uncoated high strength, low relaxation 7-wire strand, Grade 270. The nominal diameter shall be 1/2" and the nominal cross-sectional area shall be 0.153 sq. in. The 1" rods in the transverse tie assembly shall be tightened to a snug fit and the threads set. Pockets on exterior faces of bridge shall be filled with grout after transverse tie assembly is in place.
- Reinforcement bars shall conform to ASTM A 706, Grade 60. (See Special Provisions).
- Two 1/8" fabric adjusting shims of the dimensions of the exterior bearing pad shall be provided for each bearing pad location.
- A minimum 2 1/2" diameter lifting pin shall be used to engage the lifting loops during handling.
- Corrosion Inhibitor, per Article 1020.05(b)(12) and 1021.06 of the Standard Specifications, shall be used in the concrete for precast prestressed concrete deck beams.
- Compressive strength of prestressed concrete, f'c, shall be 6000 psi.
- Compressive strength of prestressed concrete at release, f'ci, shall be 5000 psi.

Note: Connect beams in pairs with the transverse tie configuration shown.

BILL OF MATERIAL

ITEM	UNIT	QUANTITY
Precast Prestressed Concrete Deck Beams (21" depth)	Sq. Ft.	3,293

PD-2136-0D

7-1-10



USER NAME =	DESIGNED - JAD	REVISIONS -
DESIGNED - JAD	CHECKED - MAG	REVISIONS -
DESIGNED - JAD	DRAWN - JAD	REVISIONS -
DESIGNED - JAD	CHECKED - MAG	REVISIONS -

STATE OF ILLINOIS
DEPARTMENT OF TRANSPORTATION

21" x 36" PPC DECK BEAM DETAILS
STRUCTURE NO. 060-3346
SHEET NO. 5 OF 14 SHEETS

TWP Road	SECTION	COUNTY	TOTAL SHEETS	SHEET NO.
305A	06-11114-00-BR	MADISON	25	12
CONTRACT NO.				
ILLINOIS FED. AID PROJECT				