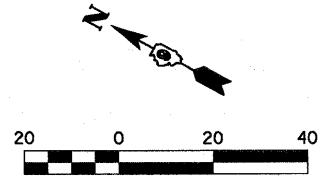
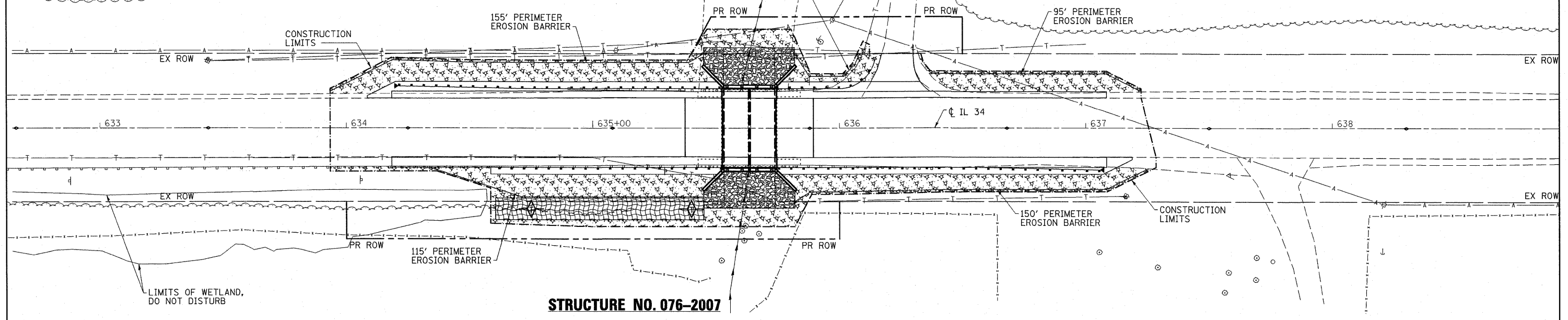


CIVIL ENGINEERING

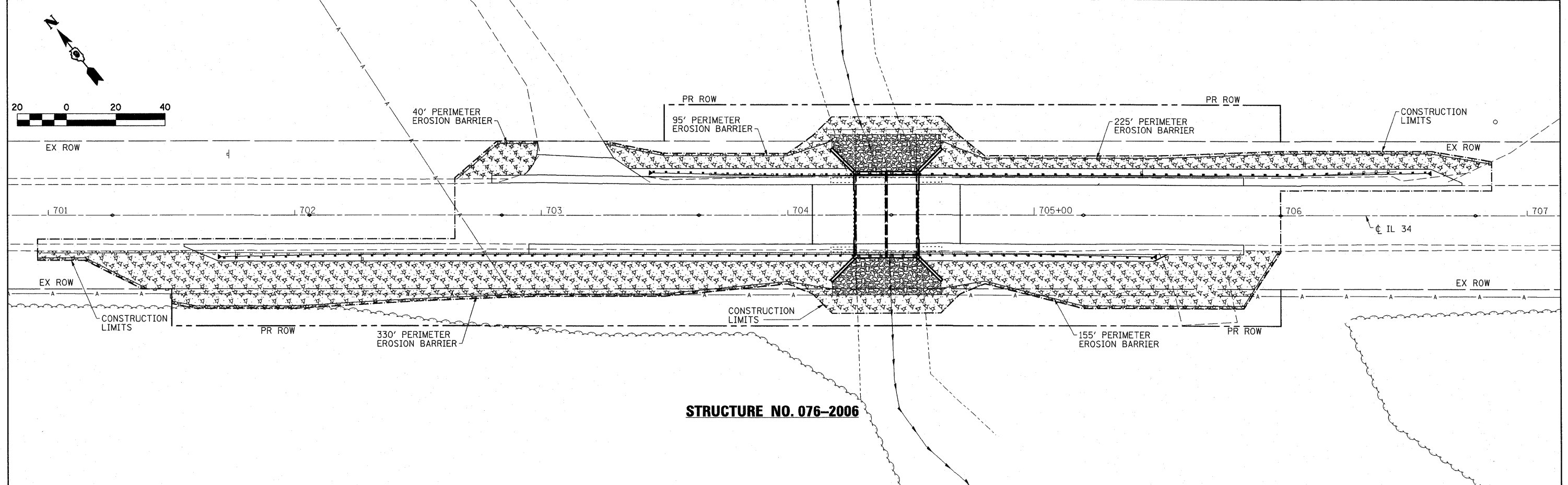


LEGEND

- APPROXIMATE SEEDING AND MULCH AREAS
- PERIMETER EROSION BARRIER
- STONE RIPRAP, CLASS A5
- EROSION CONTROL BLANKET
- TEMPORARY DITCH CHECK



STRUCTURE NO. 076-2007



STRUCTURE NO. 076-2006

FILE NAME = D998854-sht-eros51.dgn	USER NAME = HAS	DESIGNED - MTD	REVISED -	STATE OF ILLINOIS DEPARTMENT OF TRANSPORTATION	EROSION CONTROL AND DRAINAGE PLANS			F.A.P. RTE. 778	SECTION 3B-1 & 3B-2	COUNTY POPE	TOTAL SHEETS 50	SHEET NO. 13
	PLOT SCALE = 0.0833' / IN.	DRAWN - HAS	REVISED -					CONTRACT NO. 98854				
	PLOT DATE = 1/4/2011 1:05:44 PM	CHECKED - RDP	REVISED -					FED. ROAD DIST. NO. ILLINOIS FED. AID PROJECT				
	DATE - 12/10	REVISED -		SCALE: 1"=20'-0" SHEET NO. 1 OF 1 SHEETS STA. TO STA.								