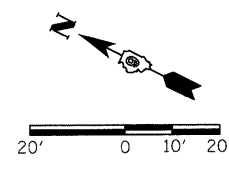
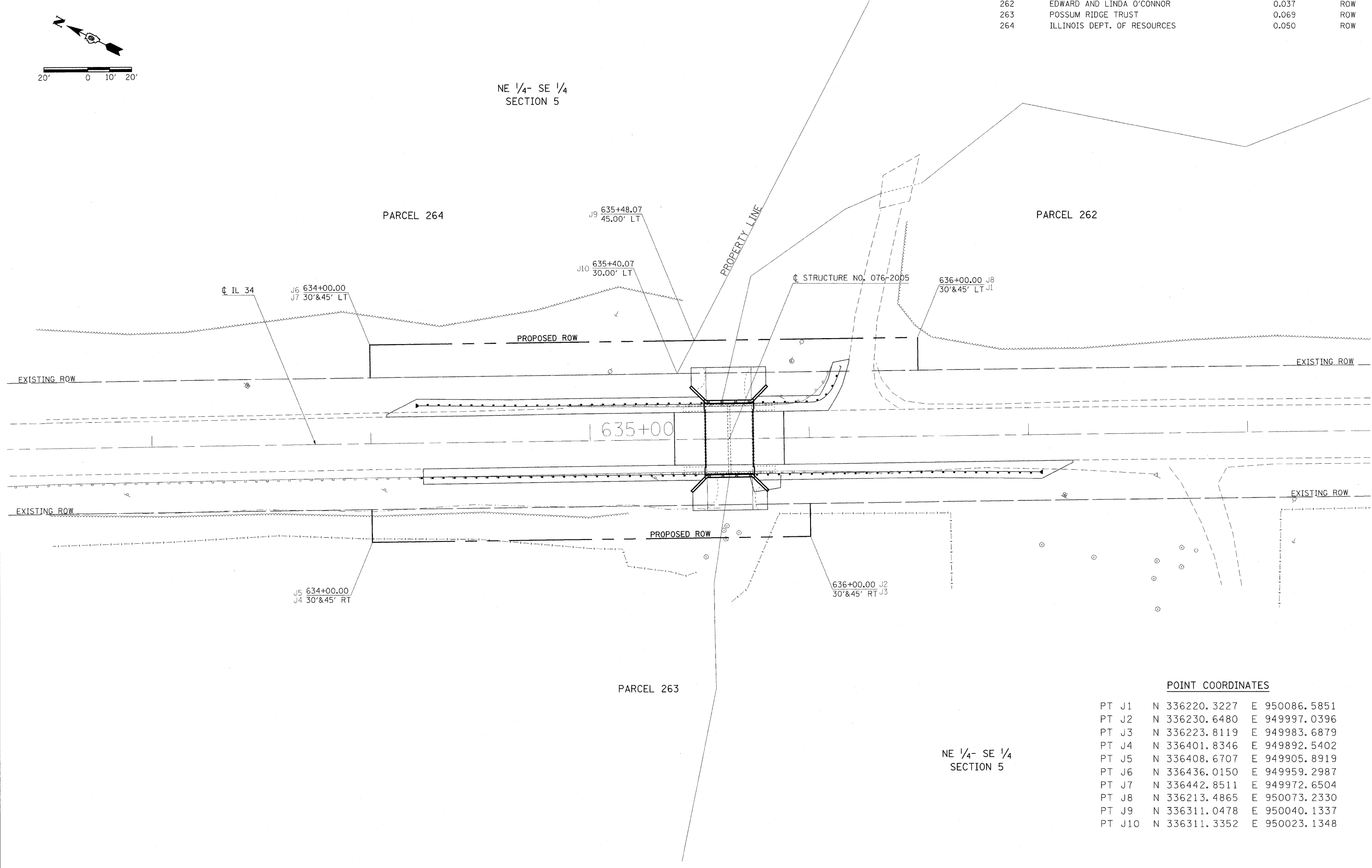


PARCEL NO.	PROPERTY OWNER	ACREAGE	ROW
262	EDWARD AND LINDA O'CONNOR	0.037	ROW
263	POSSUM RIDGE TRUST	0.069	ROW
264	ILLINOIS DEPT. OF RESOURCES	0.050	ROW



NE 1/4- SE 1/4  
SECTION 5



**POINT COORDINATES**

PT J1	N 336220.3227	E 950086.5851
PT J2	N 336230.6480	E 949997.0396
PT J3	N 336223.8119	E 949983.6879
PT J4	N 336401.8346	E 949892.5402
PT J5	N 336408.6707	E 949905.8919
PT J6	N 336436.0150	E 949959.2987
PT J7	N 336442.8511	E 949972.6504
PT J8	N 336213.4865	E 950073.2330
PT J9	N 336311.0478	E 950040.1337
PT J10	N 336311.3352	E 950023.1348

NE 1/4- SE 1/4  
SECTION 5

FILE NAME	USER NAME = dckerson1m	DESIGNED -	REVISED -	<b>STATE OF ILLINOIS DEPARTMENT OF TRANSPORTATION</b>	<b>RIGHT OF WAY PLANS</b>			F.A.P. RTE.	SECTION	COUNTY	TOTAL SHEETS	SHEET NO.
cc:\pw\work\p\dot\dckerson1m\08105101\00910-sht-row.dgn		DRAWN -	REVISED -		PROJECT	JOB NO. R99-009-10	778	3B-1	POPE	50	14	
PLOT SCALE = 1/4"=20'		CHECKED -	REVISED -		SCALE: 1/4"=20'	SHEET NO. OF SHEETS	STA.	TO STA.	CONTRACT NO. 98854			
PLOT DATE = 1/26/2011		DATE -	REVISED -		FED. ROAD DIST. NO. 2 ILLINOIS FED. AID PROJECT							