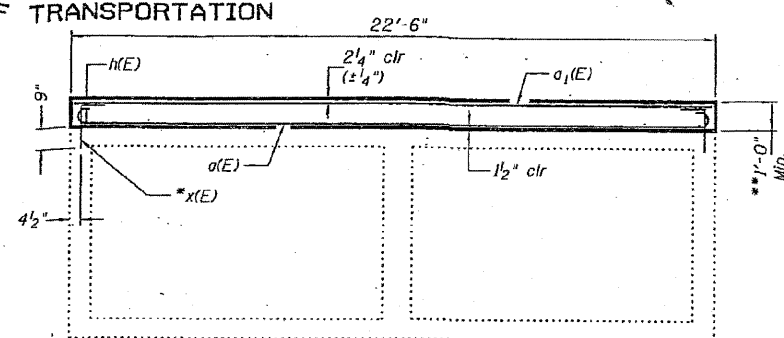
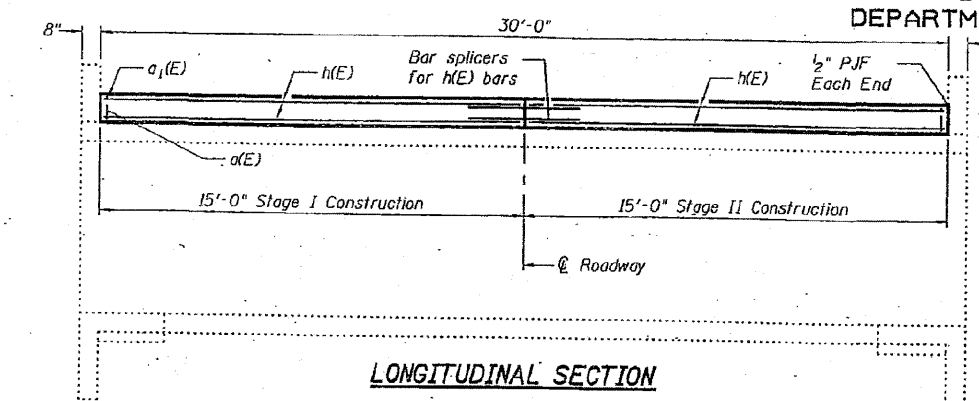


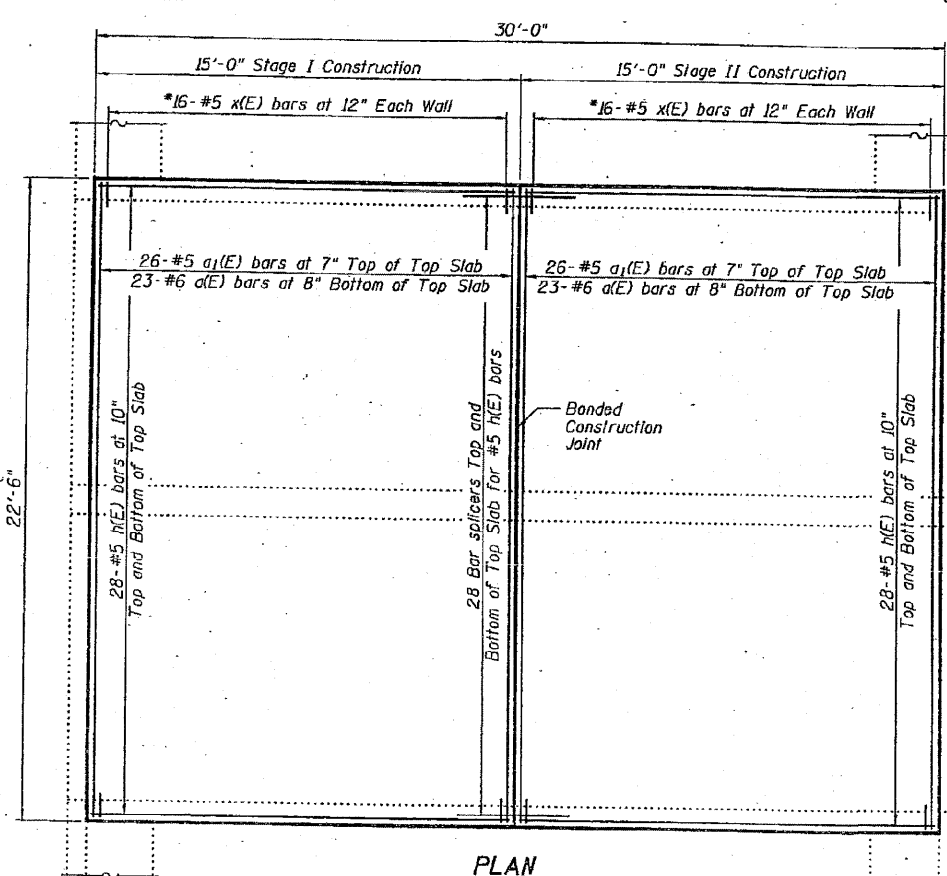
STATE OF ILLINOIS  
DEPARTMENT OF TRANSPORTATION

|                       |         |        |       |       |                    |
|-----------------------|---------|--------|-------|-------|--------------------|
| ROUTE NO.             | SECTION | COUNTY | SHEET | SHEET | SHEET NO. 1        |
| 34                    | POPE    | POPE   | 4     | 5     | 2 SHEETS           |
| FED. ROAD DIST. NO. 7 |         |        |       |       | CONTRACT NO. 98854 |



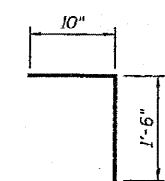
**END ELEVATION**  
 \*\*Remove the existing wearing surface and pavement to the top of the existing slab and replace as shown. Slope to match existing roadway. Cost of all removal is included with Hot-Mix Asphalt Surface Removal.

**GENERAL NOTES**  
 Plan dimensions and details relative to existing plans are subject to routine variations. The Contractor shall field verify existing dimensions and details affecting new construction and make necessary approved adjustments prior to construction or ordering of materials. Such variations shall not be cause for additional compensation for a change in scope of the work, however, the Contractor will be paid for the quantity actually furnished based upon the unit price bid for the work.  
 Reinforcement bars shall conform to the requirements of ASTM A 706 Gr 60 (LL Modified). See Special Provisions.  
 Reinforcement bars designated (E) shall be epoxy coated.  
 The deck surface shall have its final finish lined according to Article 420.05(g)(1) of the Standard Specifications. Cost included with Concrete Superstructures.

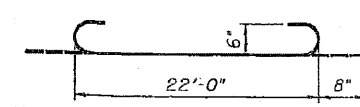


\*Epoxy grout x(E) bars in 9" min. holes according to Article 584 of the Standard Specifications.

FOR INFORMATION ONLY



BAR x(E)



a(E) BAR

**DESIGN STRESSES**  
 FIELD UNITS  
 f'c = 3,500 psi  
 fy = 60,000 psi (Reinforcement)

BILL OF MATERIAL

| Bar                              | No. | Size    | Length | Shape |
|----------------------------------|-----|---------|--------|-------|
| a(E)                             | 46  | #6      | 23'-4" |       |
| a1(E)                            | 56  | #5      | 22'-2" |       |
| h(E)                             | 112 | #5      | 14'-8" |       |
| x(E)                             | 64  | #5      | 2'-4"  |       |
| Bar Splicers                     |     | Each    | 56     |       |
| HMA Surface Removal              |     | Sq. Yd. | 75     |       |
| Concrete Superstructure          |     | Cu. Yd. | 25     |       |
| Reinforcement Bars, Epoxy Coated |     | Lbs.    | 4,680  |       |

**SLAB DETAILS**  
 SBI 34  
 POPE COUNTY  
 SN 076-2005

DESIGNED V.H.V.  
 CHECKED -  
 DRAWN Drew Christopher  
 CHECKED V.H.V.

EXAMINED *Carl Perry*  
 ENGINEER OF STRUCTURAL SERVICES  
 PASSED *Ralph E. Anderson*  
 ENGINEER OF BRIDGES AND STRUCTURES

**PRE-FINAL**  
 DATE: 12/05/2007  
 Expires: November 30, 2008

SLT-99-001-07  
 ...projects\mac00034\0762005.dgn 12/5/2007 3:24:38 PM

|   |                 |                |             |   |   |   |              |             |                 |              |
|---|-----------------|----------------|-------------|---|---|---|--------------|-------------|-----------------|--------------|
| NAME = 3854-sht-rem@3.dgn                   | USER NAME = HAS | DESIGNED - MTD | REVISED -   | STATE OF ILLINOIS<br>DEPARTMENT OF TRANSPORTATION | EXISTING STRUCTURE PLANS - FOR INFORMATION ONLY<br>STRUCTURE NO. 076-2005 | F.A.P. RTE. 778                                   | SECTION 3B-2 | COUNTY POPE | TOTAL SHEETS 50 | SHEET NO. 29 |
| PLOT SCALE = 0.0833' / IN.                  | DRAWN - HAS     | REVISOR - RDP  | REVISIONS - |   |   | CONTRACT NO. 98854                                |              |             |                 |              |
| PLOT DATE = 12/27/2010 10:24:49 AM          | DATE - 12/10    | REVISOR -      | REVISIONS - |   |   | FED. ROAD DIST. NO. ILLINOIS FED. AID PROJECT AID |              |             |                 |              |
| SCALE: SHEET NO. 2 OF 2 SHEETS STA. TO STA. |                 |                |             |   |   |   |              |             |                 |              |