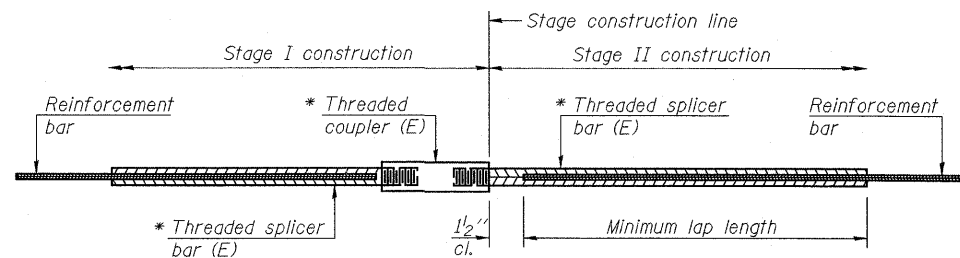


CIVIL ENGINEERING



**STANDARD BAR SPLICER ASSEMBLY**

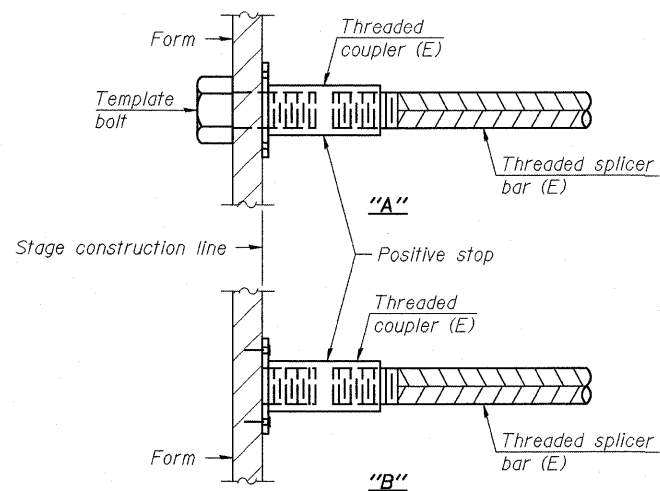
Minimum Lap Lengths					
Bar size to be spliced	Table 1	Table 2	Table 3	Table 4	Table 5
3, 4	1'-5"	1'-11"	2'-1"	2'-4"	2'-3"
5	1'-9"	2'-5"	2'-7"	2'-11"	2'-10"
6	2'-1"	2'-11"	3'-1"	3'-6"	3'-4"
7	2'-9"	3'-10"	4'-2"	4'-8"	4'-6"
8	3'-8"	5'-1"	5'-5"	6'-2"	5'-10"
9	4'-7"	6'-5"	6'-10"	7'-9"	7'-5"

- Table 1: Black bar, 0.8 Class C
- Table 2: Black bar, Top bar lap, 0.8 Class C
- Table 3: Epoxy bar, 0.8 Class C
- Table 4: Epoxy bar, Top bar lap, 0.8 Class C
- Table 5: Epoxy bar, Top bar lap, Class B

Threaded splicer bar length = min. lap length + 1 1/2" + thread length

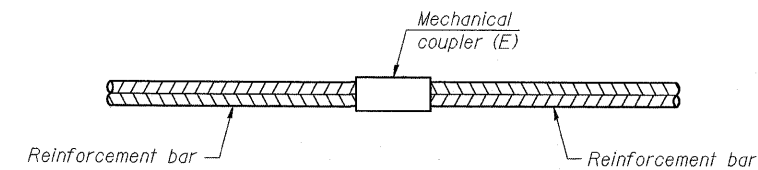
\* Epoxy not required on Bar Splicer Assembly components used in conjunction with black bars.

Location	Bar size	No. assemblies required	Table for minimum lap length
Bottom slab, T & B	#5	54	3
Top slab, bottom	#6	34	3
Top slab, top	#4	27	3
Walls	#5	24	4



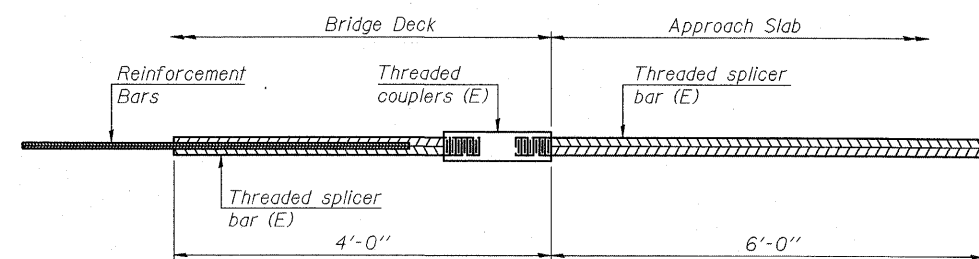
**INSTALLATION AND SETTING METHODS**

- "A" : Set bar splicer assembly by means of a template bolt.
- "B" : Set bar splicer assembly by nailing to wood forms or cementing to steel forms.
- (E) : Indicates epoxy coating.



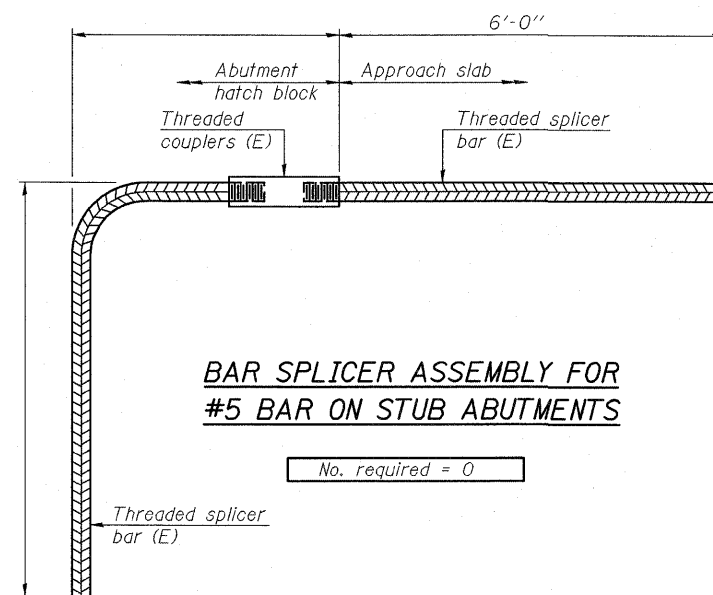
**STANDARD MECHANICAL SPLICER**

Location	Bar size	No. assemblies required
NA		



**BAR SPLICER ASSEMBLY FOR #5 BAR ON INTEGRAL OR SEMI-INTEGRAL ABUTMENTS**

No. required = 0



**BAR SPLICER ASSEMBLY FOR #5 BAR ON STUB ABUTMENTS**

No. required = 0

**NOTES**

- Splicer bars shall be deformed with threaded ends and have a minimum 60 ksi yield strength.
- All reinforcement shall be lapped and tied to the splicer bars.
- Bar splicer assemblies shall be epoxy coated according to the requirements for reinforcement bars. See Section 508 of the Standard Specifications.
- See special provision for Mechanical Splicers.
- See approved list of bar splicer assemblies and mechanical splicers for alternatives.

BSD-1

7-1-10

FILE NAME = 0762006-98854-06-Bar-Dtl.dgn	USER NAME = HAS	DESIGNED - MTD 06/10	REVISD -	<p align="center"><b>STATE OF ILLINOIS</b> <b>DEPARTMENT OF TRANSPORTATION</b></p>	<p align="center"><b>BAR SPLICER ASSEMBLY AND MECHANICAL SPLICER DETAILS</b> <b>STRUCTURE NO. 076-2006</b></p>	F.A.P. RTE. 778	SECTION 3B-1	COUNTY POPE	TOTAL SHEETS 50	SHEET NO. 35
PLOT SCALE = 0 1/4" = 1' IN.	CHECKED - MJW 09/10	REVISD -								
PLOT DATE = 12/27/2010 10:27:45 AM	DRAWN - DWH 06/10	REVISD -								
	CHECKED - MTD 12/10	REVISD -								
SHEET NO. 6 OF 7 SHEETS						CONTRACT NO. 98854 ILLINOIS FED. AID PROJECT AID				