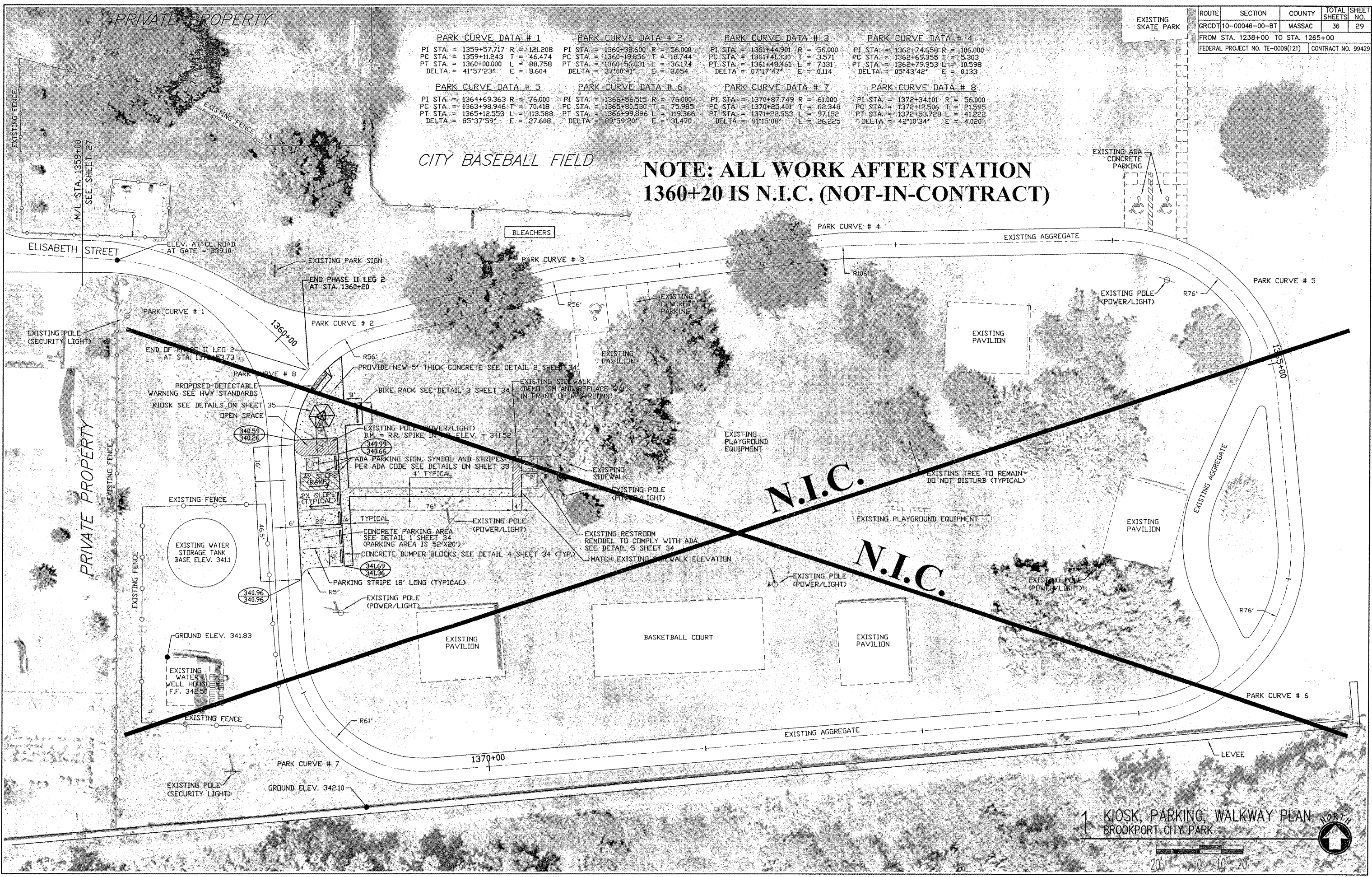


ROUTE	SECTION	COUNTY	TOTAL SHEETS	SHEET NO.
GRCDT10-00046-00-BT	MASSAC		36	29
FROM STA. 1238+00 TO STA. 1265+00				
FEDERAL PROJECT NO. TE-0009(121)			CONTRACT NO. 99429	

PARK CURVE DATA # 1	PARK CURVE DATA # 2	PARK CURVE DATA # 3	PARK CURVE DATA # 4
PI STA. = 1359+57.717 R = 121.208	PI STA. = 1360+38.600 R = 56.000	PI STA. = 1361+44.901 R = 56.000	PI STA. = 1362+74.658 R = 106.000
PC STA. = 1359+11.243 T = 46.474	PC STA. = 1360+19.956 T = 18.744	PC STA. = 1361+41.330 T = 3.571	PC STA. = 1362+69.355 T = 5.303
PT STA. = 1360+00.000 L = 88.758	PT STA. = 1360+56.031 L = 36.174	PT STA. = 1361+48.461 L = 7.131	PT STA. = 1362+79.953 L = 10.598
DELTA = 41°57'23" E = 8.604	DELTA = 37°00'41" E = 3.054	DELTA = 07°17'47" E = 0.114	DELTA = 05°43'42" E = 0.133

PARK CURVE DATA # 5	PARK CURVE DATA # 6	PARK CURVE DATA # 7	PARK CURVE DATA # 8
PI STA. = 1364+69.363 R = 76.000	PI STA. = 1366+56.515 R = 76.000	PI STA. = 1370+87.749 R = 61.000	PI STA. = 1372+34.101 R = 56.000
PC STA. = 1363+98.946 T = 70.418	PC STA. = 1365+80.530 T = 75.985	PC STA. = 1370+25.401 T = 62.348	PC STA. = 1372+12.506 T = 21.595
PT STA. = 1365+12.553 L = 113.588	PT STA. = 1366+99.896 L = 119.366	PT STA. = 1371+22.553 L = 97.152	PT STA. = 1372+53.728 L = 41.222
DELTA = 85°37'59" E = 27.608	DELTA = 89°59'20" E = 31.470	DELTA = 91°15'08" E = 26.225	DELTA = 42°10'34" E = 4.020

NOTE: ALL WORK AFTER STATION 1360+20 IS N.I.C. (NOT-IN-CONTRACT)



1 KIOSK, PARKING, WALKWAY PLAN
BROOKPORT CITY PARK

