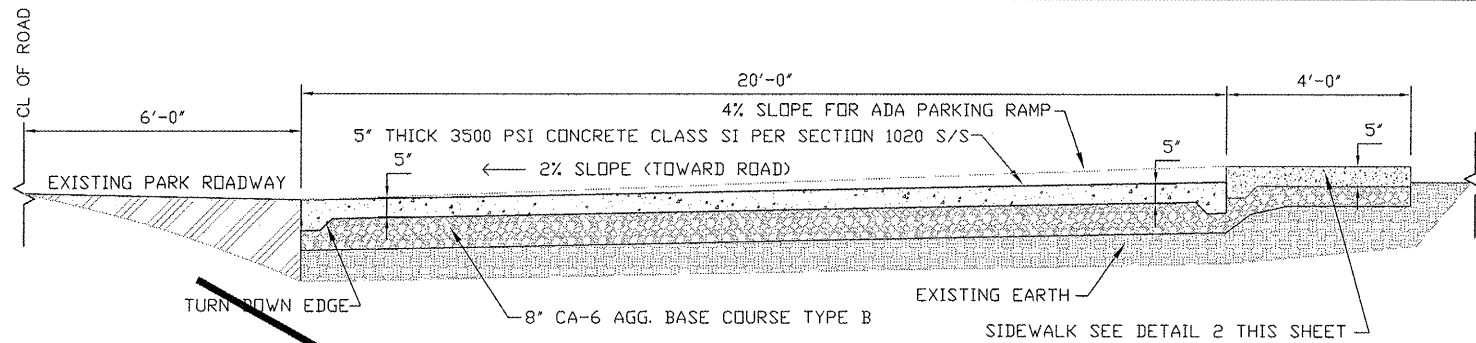


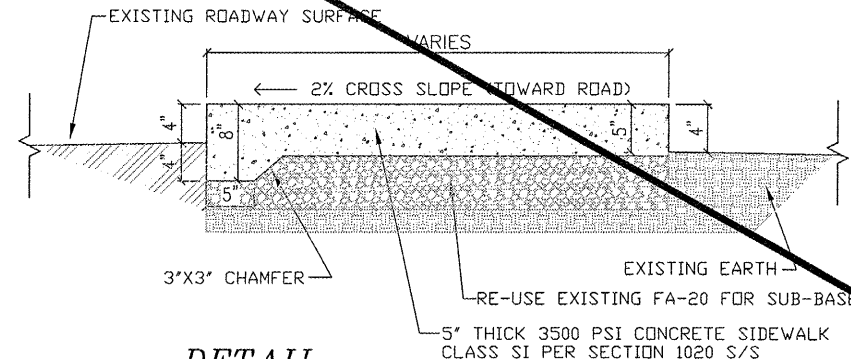
ROUTE	SECTION	COUNTY	TOTAL SHEETS	SHEET NO.
GRCDT	10-00046-00-BT	MASSAC	36	34
FROM STA.		TO STA.		
FEDERAL PROJECT NO. TE-0009(121)		CONTRACT NO. 99429		

RESTROOM CONSTRUCTION NOTES:

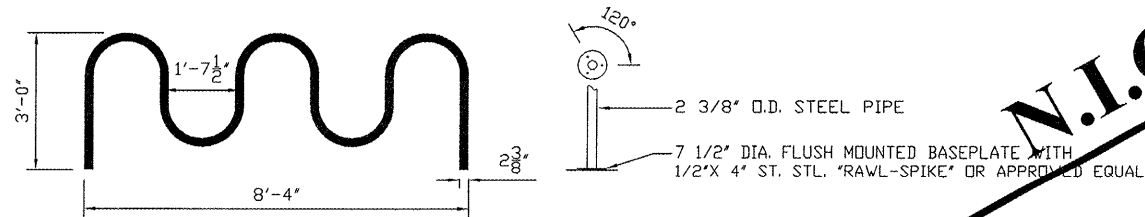
- 1 OUTSIDE BUILDING DIMENSION ARE 8'-0"x14'-8" (8' C.M.U. WALLS)
- 2 NEW TRIM, GABLE, SOFFIT, WITH NEW METAL ROOF
- 3 REPLACE WINDOW UNITS (32 1/2"x13" OPENING) WITH NEW PRE-FINISHED WINDOW UNIT
- 4 REPLACE DUPLEX OUTLETS WITH GFI OUTLETS
- 5 REMOVE OLD CONCRETE PAD AND POUR NEW CONCRETE PAD, SEE DETAILS AND SHEET 29
- 6 NEW 36" STEEL DOORS WITH NEW LOCK SETS (SECURITY)
- 7 REPLACE LAVATORY WITH 18"x18" ADA COMPLIANT LAVATORY
- 8 REPLACE WC WITH NEW ADA REAR MOUNTED STAINLESS STEEL SIPHON JET TOILET WITH HYDRAULIC FLUSH VALVE
- 9 42" GRAB BAR (EXISTING TO REMAIN)
- 10 NEW 30" GRAB BAR
- 11 NEW SURFACE MOUNTED PAPER TOWEL DISPENSER
- 12 DOUBLE TOILET PAPER DISPENSER
- 13 NEW WASTE RECEPTACLE
- 14 NEW MIRROR 18"x22 1/2" (ADA)
- 15 INSTALL CONCEALED FASTENING SATIN FINISH HORIZONTAL 48 OUNCE SOAP DISPENSER



DETAIL CONCRETE PARKING AREA
SCALE: N.T.S.

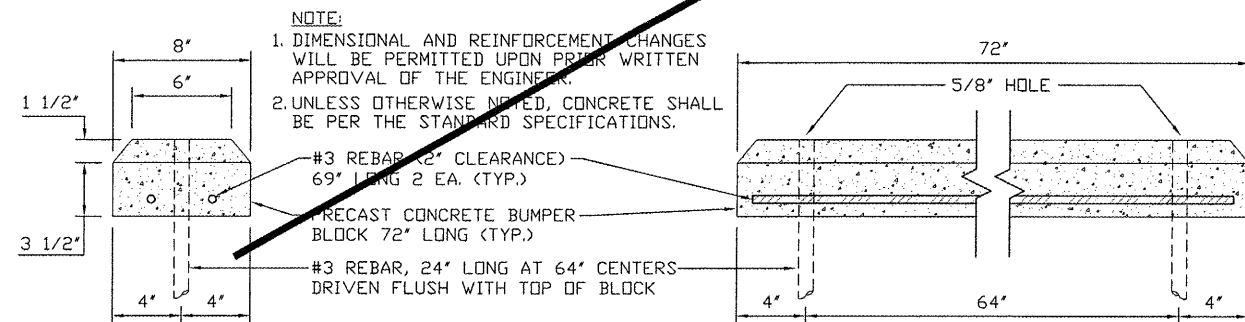


DETAIL SIDEWALK CROSS SECTION
SCALE: N.T.S.

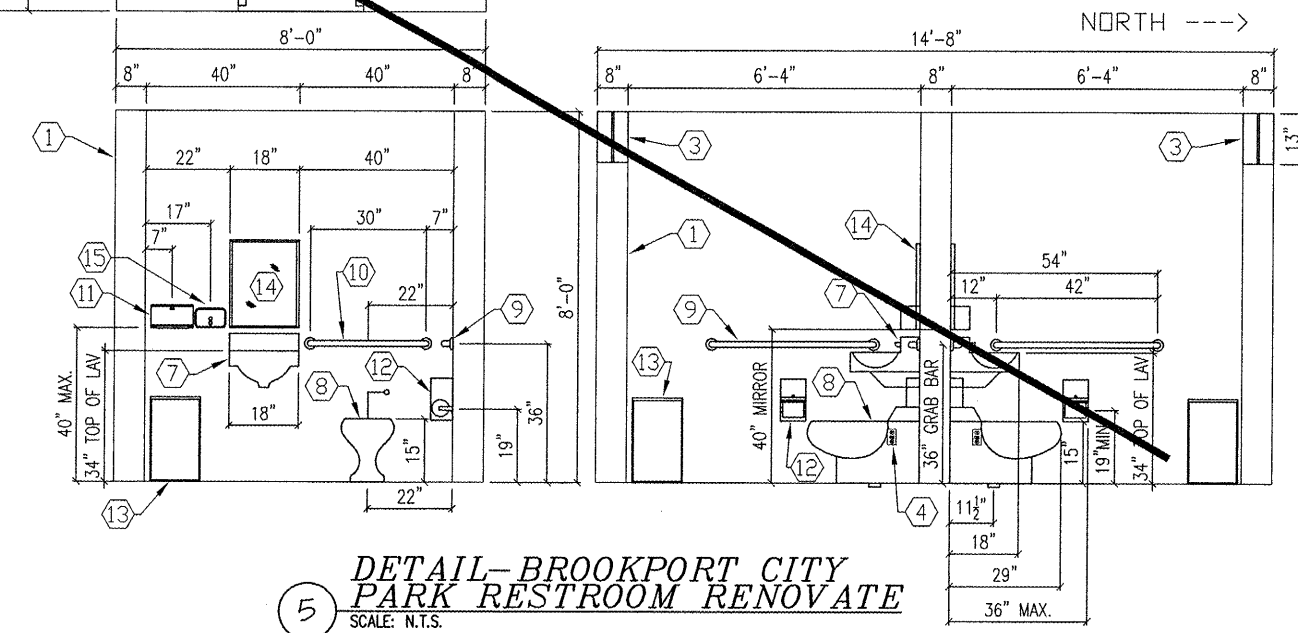
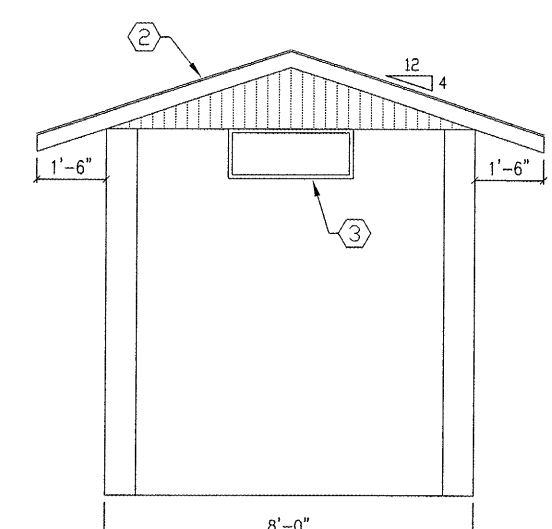
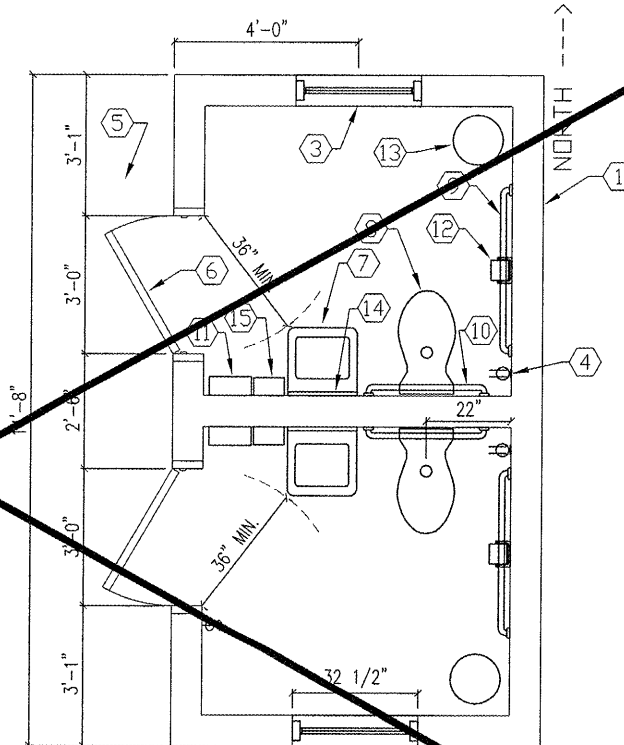


NOTE:
BIKE RACK TO HAVE A POWDER COATED FINISH IN A COLOR TO BE CHOSEN BY I.D.N.R.

DETAIL BIKE RACK
SCALE: N.T.S.



DETAIL-PRECAST CONC. BUMPER BLOCK
SCALE: N.T.S.



DETAIL-BROOKPORT CITY PARK RESTROOM RENOVATE
SCALE: N.T.S.

N.I.C.

N.I.C.