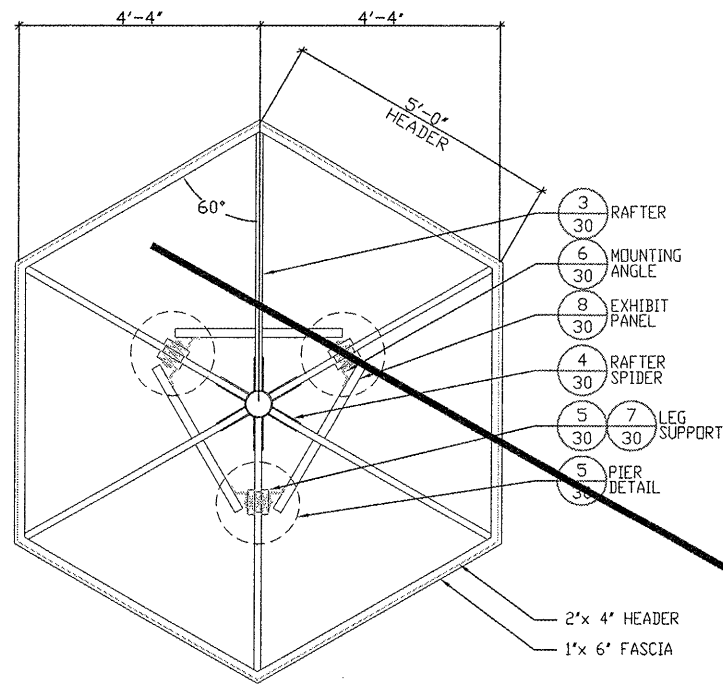
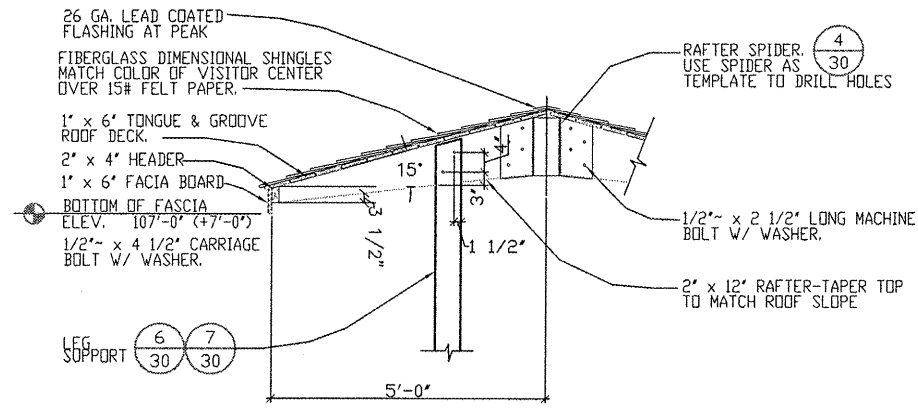


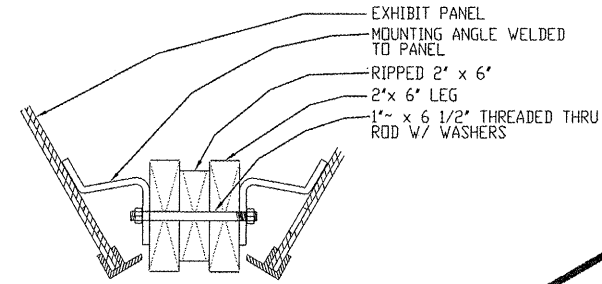
ROUTE	SECTION	COUNTY	TOTAL SHEET NO.
GRCDT10-00046-00-BT		MASSAC	36 35
FROM STA.	TO STA.		
FEDERAL PROJECT NO. TE-0009(121)			CONTRACT NO. 99429



1 **DETAIL FRAMING PLAN**
SCALE: N.T.S.



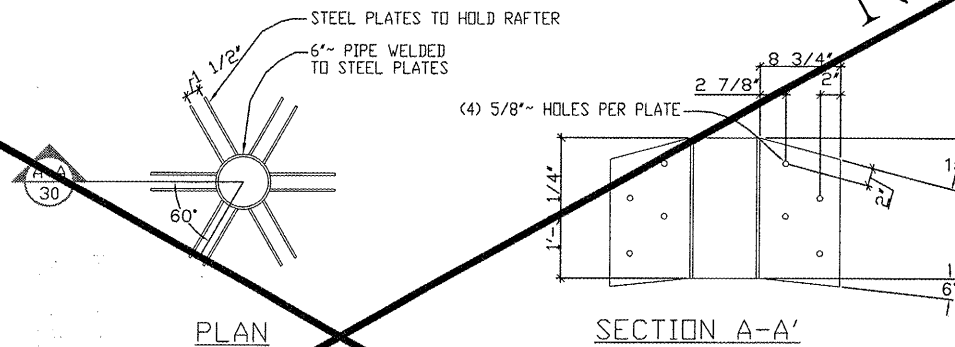
3 **DETAIL ROOF SECTION**
SCALE: N.T.S.



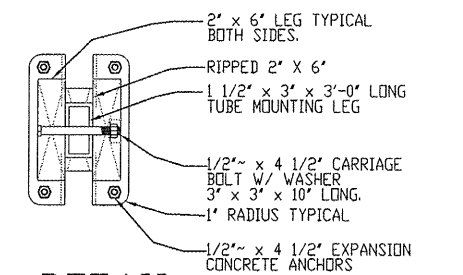
6 **DETAIL MOUNTING ANGLE TO LEG SUPPORT**
SCALE: N.T.S.

N.I.C.

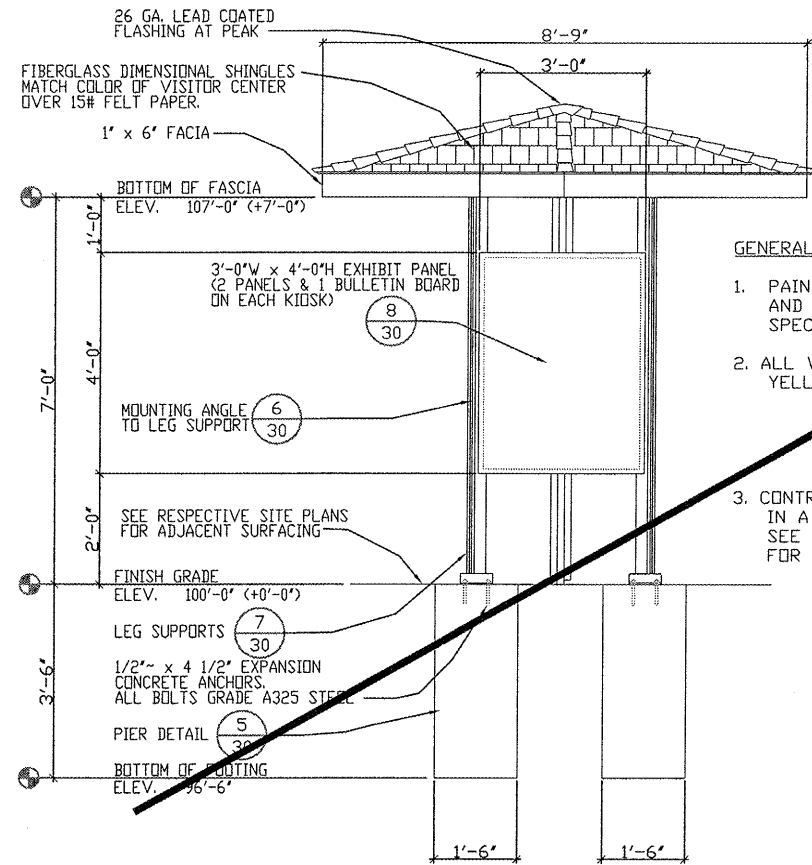
N.I.C.



4 **DETAIL RAFTER SPIDER**
SCALE: N.T.S.



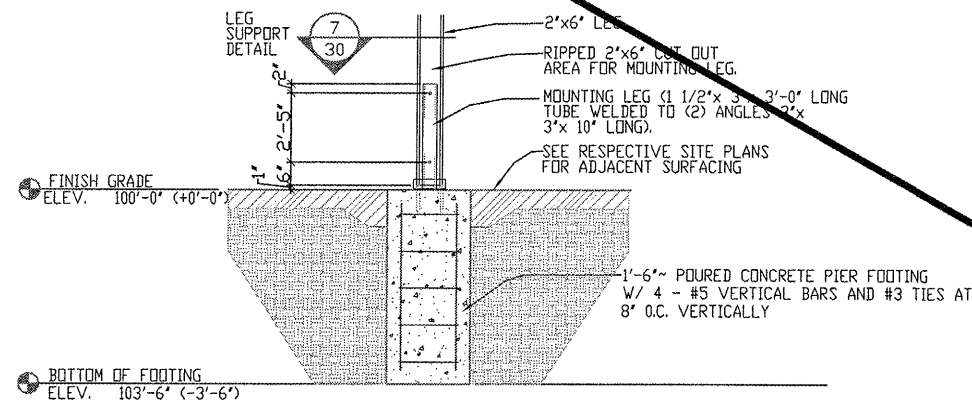
7 **DETAIL LEG SUPPORT DETAIL**
SCALE: N.T.S.



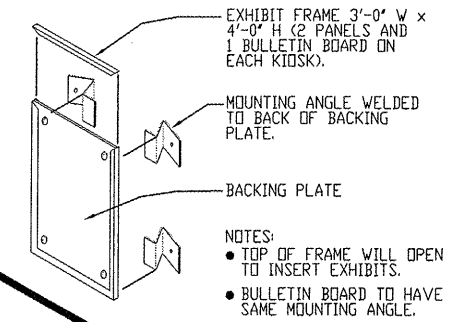
2 **DETAIL ELEVATION**
SCALE: N.T.S.

GENERAL NOTES:

1. PAINT ALL EXPOSED METAL PIECES AND STAIN ALL EXPOSED WOOD SEE SPECIAL PROVISIONS FOR FINISHES
2. ALL WOOD #1 CCA TREATED SOUTHERN YELLOW PINE EXCEPT AS NOTED.
BF = 1650#
CFPARA = 1750#
CFPERP = 565#
3. CONTRACTOR MAY OBTAIN METAL COMPONENTS IN A KIT OR FABRICATE FROM SHEET STOCK. SEE SPECIFICATION SPECIAL PROVISIONS FOR COMPONENT DESCRIPTION.



5 **DETAIL PIER**
SCALE: N.T.S.



8 **DETAIL EXHIBIT PANEL DETAIL**
SCALE: N.T.S.

NOTE: CONTRACTOR SHALL OBTAIN AND VERIFY ALL DIMENSIONS AND CONDITIONS AT JOB SITE AND BE FULLY RESPONSIBLE FOR SAME.