

222 SOUTH RIVERSIDE PLAZA, SUITE 2320
CHICAGO, IL 60606
(312) 669-9601 FAX (312) 669-9606



DISTRICT 1 - BUREAU OF DESIGN - PROJECT MANAGER: MR. BRIAN KUTTAB, P.E. (847) 705-4431

FOR INDEX OF SHEETS, SEE SHEET NO. 2

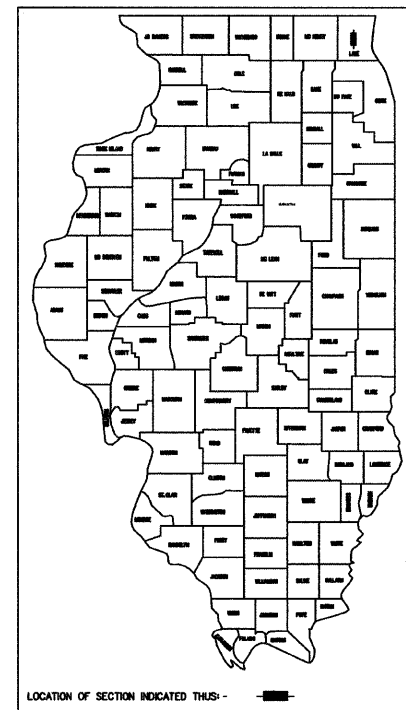
PROJECT LOCATED IN:
VILLAGE OF GRAYSLAKE,
VILLAGE OF THIRD LAKE, AND
UNINCORPORATED LAKE COUNTY

STATE OF ILLINOIS
DEPARTMENT OF TRANSPORTATION
DIVISION OF HIGHWAYS
PLANS FOR PROPOSED
HIGHWAY

F.A.P. ROUTE 344 (U.S. ROUTE 45)
ILLINOIS ROUTE 120 (BELVIDERE ROAD)
TO WASHINGTON STREET
ROADWAY RECONSTRUCTION, ADD LANES, AND TRAFFIC SIGNAL MODERNIZATION
SECTION: (46-1S&47) WRS-2

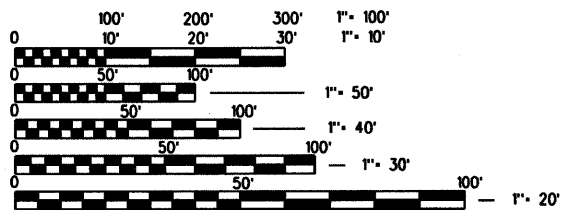
LAKE COUNTY
C-91-208-00

FAP RTE	SECTION	COUNTY	TOTAL SHEETS	SHEET NO.
344	(46-1S&47)WRS-2	LAKE	234	1
F.H.W.A. REG. 7	ILLINOIS	PROJECT		
D-91-208-00		Contract No. 60956		



DESIGN DESIGNATION:

U.S. ROUTE 45
POSTED SPEED 40MPH STA 343+59.42 TO 1136+02
45MPH STA 1136+02 TO 1181+30
DESIGN SPEED 45MPH
ADT 22,900 (2007)
2,700 (10) MAJOR ARTERIAL 5.51 (PCC-20)

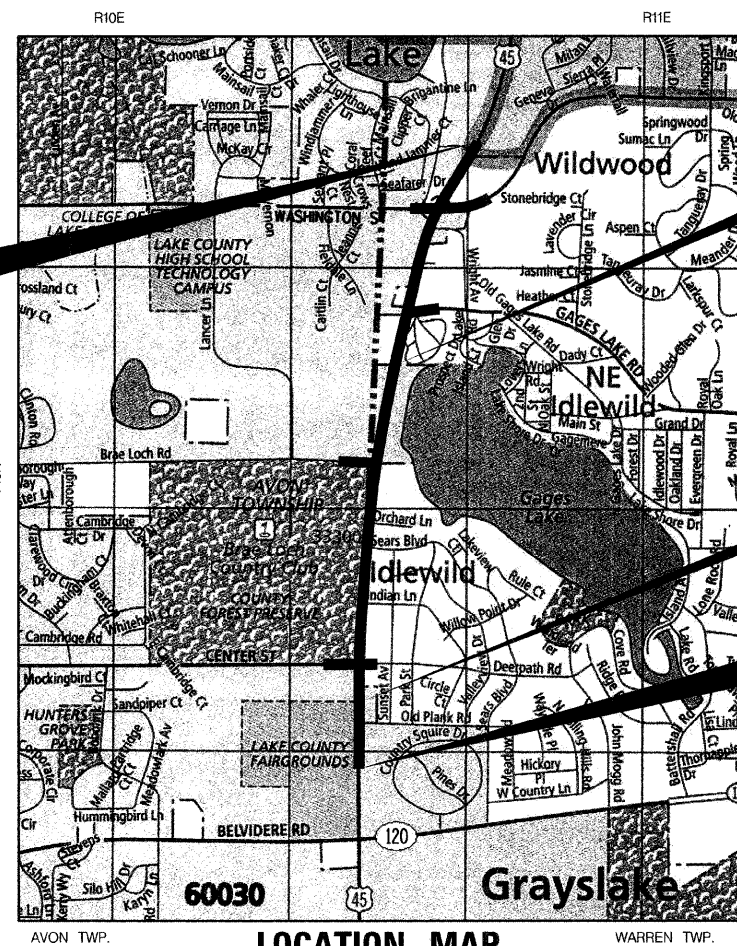


FULL SIZE PLANS HAVE BEEN PREPARED USING STANDARD ENGINEERING SCALES, REDUCED SIZED PLANS WILL NOT CONFORM TO STANDARD SCALES, IN MAKING MEASUREMENTS ON REDUCED PLANS, THE ABOVE SCALES MAY BE USED.

J.U.L.I.E.
JOINT UTILITY LOCATION INFORMATION FOR EXCAVATION
(800) 892-0123 AND LAKE COUNTY PUBLIC WORKS (847) 323-1600

PROJECT ENDS
U.S. ROUTE 45
STATION 1179+09.87

LOCATION MAP SCALE
SCALE 1 : 13,500



STATION EQUATION:
STA 1150+06.30 BK =
STA 1150+03.65 AH

DESCRIPTION OF PROJECT
THIS PROJECT CONSISTS OF EARTH EXCAVATION, CONSTRUCTION OF STORM SEWERS AND DRAINAGE STRUCTURES, ROADWAY RECONSTRUCTION, MODERNIZATION OF TRAFFIC SIGNALS, AND LANDSCAPING.

STATION EQUATION:
STA 346+84.01 BK =
STA 1100+35.69 AH

PROJECT BEGINS
U.S. ROUTE 45
STATION 343+59.42



12-3-09
MICHAEL J. LEV, P.E.
NO. 062-055367
EXP. DATE 11/30/11
TRANSYSTEMS

SEAL

STATE OF ILLINOIS
DEPARTMENT OF TRANSPORTATION
DIVISION OF HIGHWAYS
SUBMITTED: DECEMBER 8, 2009
Devin M. O'Keefe DEPUTY DIRECTOR OF HIGHWAYS, REGION ENGINEER
March 19, 2010
Scott E. Stitt P.E. ENGINEER OF DESIGN AND ENVIRONMENT
March 19, 2010
Christine M. Reed DIRECTOR, DIVISION OF HIGHWAYS

CONTRACT NO. 60956

COUNTY: LAKE

ROUTE: FAP 344

SECTION: (46-1S&47) WRS-2

PROJECT GROSS LENGTH = 8,196.12 FEET (1.55 MILES)
NET LENGTH = 8,196.12 FEET (1.55 MILES)

PRINTED BY THE AUTHORITY OF
THE STATE OF ILLINOIS