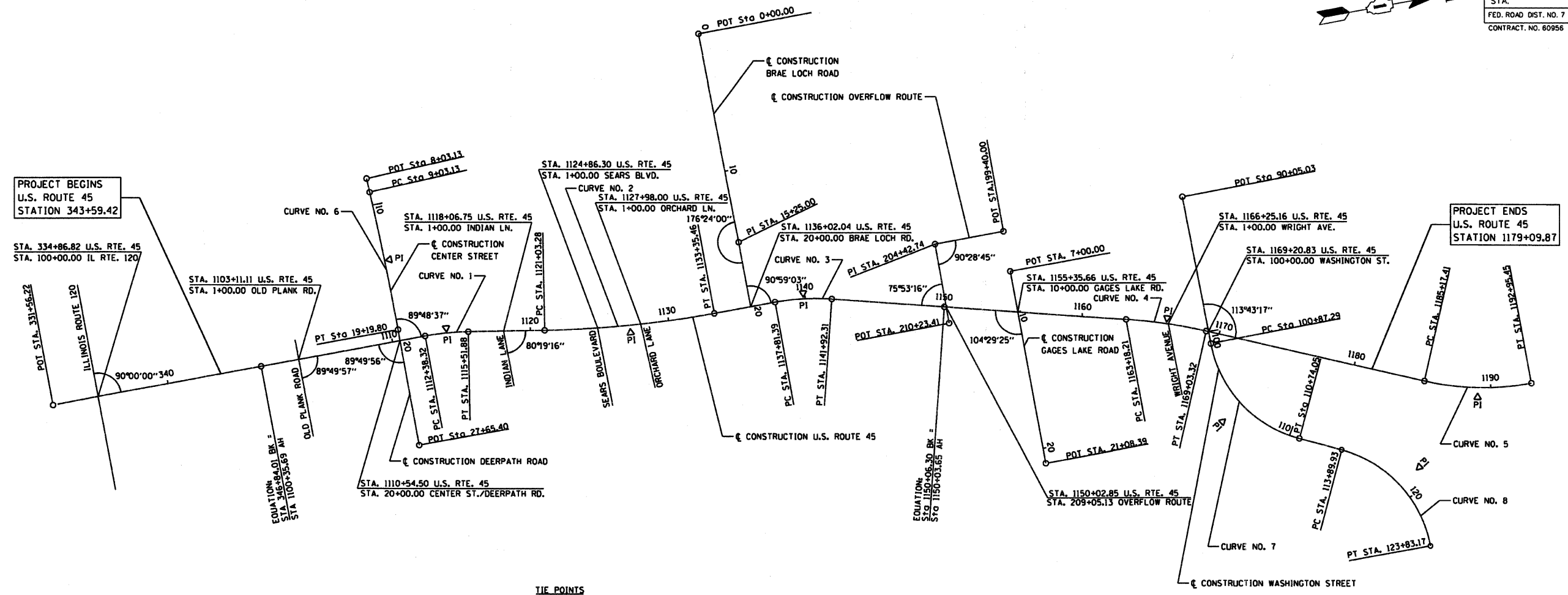
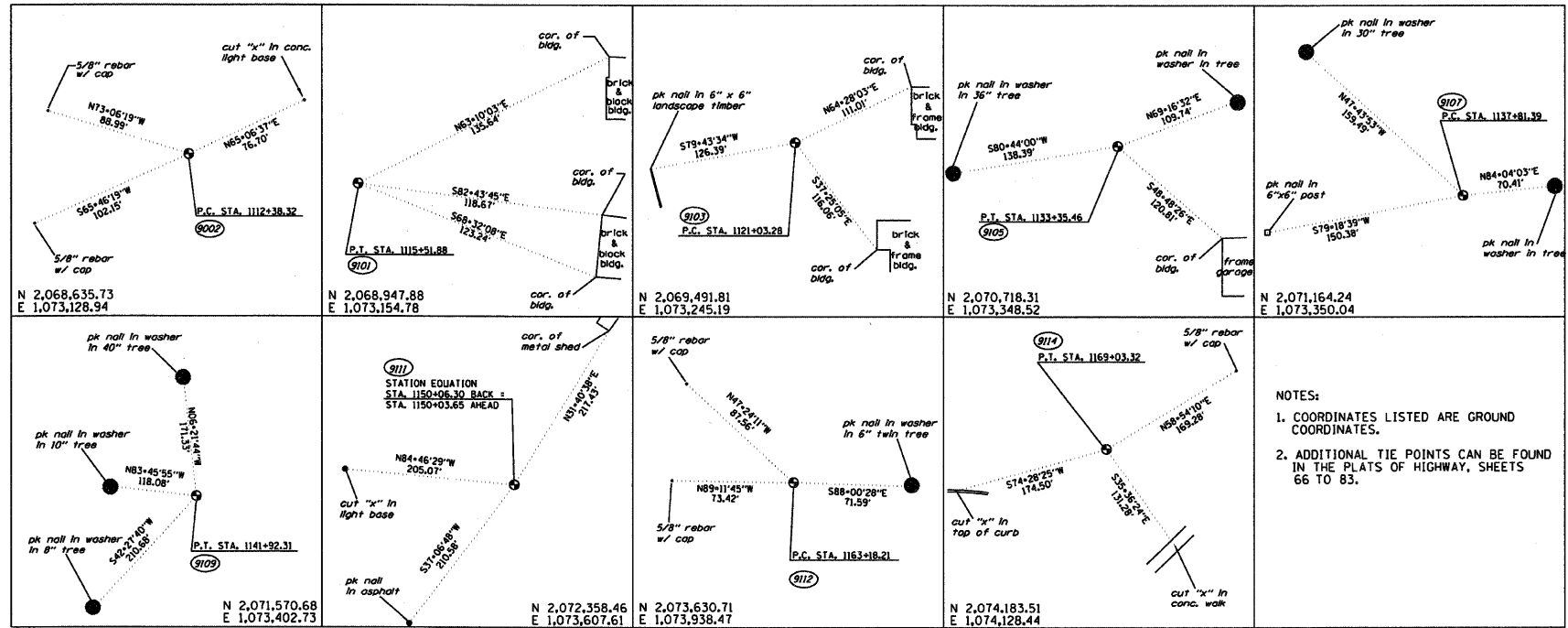


RTE	SECTION	COUNTY	TOTAL SHEETS	SHEET NO
344	(46-1S&47)WRS-2	LAKE	234	18
STA.	TO STA.			
FED. ROAD DIST. NO. 7 ILLINOIS FED. AD PROJECT				
CONTRACT NO. 60956				



TIE POINTS



BENCHMARK SUMMARY

BM# 2	"□" CUT IN CONCRETE BASE OF TRAFFIC SIGNAL WITH MAST ARM AT SOUTHEAST CORNER OF U.S. ROUTE 45 AND CENTER STREET/DEERPATH ROAD STA. 1110+12.43 45.34 RT ELEV. 796.29
TBM "F"	RAILROAD SPIKE IN POWER POLE WITH LIGHT AT NORTHEAST CORNER OF INDIAN LANE AND U.S. ROUTE 45 STA. 1118+30.00 39.45 RT ELEV. 797.28
TBM "G"	RAILROAD SPIKE IN FIRST POWER POLE SOUTH OF SEARS BOULEVARD AND U.S. ROUTE 45 (IN FRONT OF HOUSE ADDRESS 33427) STA. 1124+15.83 43.54 RT ELEV. 800.70
TBM "H"	"L" CUT IN NORTHEAST CORNER OF TRAFFIC SIGNAL BASE AT SOUTHWEST CORNER OF BRAE LOCH ROAD AND U.S. ROUTE 45 STA. 1135+76.19 34.11 LT ELEV. 788.20
TBM "I"	"L" CUT IN NORTHEAST CORNER OF CONCRETE HEADWALL ON EAST SIDE OF U.S. ROUTE 45 BETWEEN BRAE LOCH ROAD AND GAGES LAKE ROAD STA. 1143+05.12 34.78 RT ELEV. 784.19
TBM "K"	"X" IN NORTHWEST BOLT OF THE SECOND FIRE HYDRANT SOUTH OF THE INTERSECTION OF WASHINGTON STREET AND U.S. ROUTE 45 (WEST SIDE) STA. 1162+88.76 32.23 LT ELEV. 777.34
TBM "L"	"L" CUT IN NORTHEAST CORNER OF THE TRAFFIC SIGNAL DOUBLE HANDHOLE AT THE SOUTHEAST CORNER OF U.S. ROUTE 45 AND WASHINGTON STREET STA. 1168+92.77 51.24 RT ELEV. 777.21

- NOTES:**
- COORDINATES LISTED ARE GROUND COORDINATES.
 - ADDITIONAL TIE POINTS CAN BE FOUND IN THE PLATS OF HIGHWAY, SHEETS 66 TO 83.

<p>PROPOSED CONSTRUCTION US ROUTE 45 CURVE NO. 1</p> <p>PI STA. 1113+95.46 Δ = 9° 24' 25" (RT) D = 3° 00' 00" T = 157.14' R = 1,909.86' L = 313.56' E = 6.45' PC STA. 1112+38.32 PT STA. 1115+51.88</p>	<p>PROPOSED CONSTRUCTION US ROUTE 45 CURVE NO. 2</p> <p>PI STA. 1127+20.71 Δ = 9° 14' 29" (LT) D = 0° 45' 00" T = 617.43' R = 7,639.44' L = 1,232.18' E = 24.91' PC STA. 1121+03.28 PT STA. 1133+35.46</p>	<p>PROPOSED CONSTRUCTION US ROUTE 45 CURVE NO. 3</p> <p>PI STA. 1139+87.94 Δ = 14° 22' 56" (RT) D = 3° 30' 00" T = 206.55' R = 1,637.02' L = 410.92' E = 12.98' PC STA. 1137+81.39 PT STA. 1141+92.31</p>	<p>PROPOSED CONSTRUCTION US ROUTE 45 CURVE NO. 4</p> <p>PI STA. 1166+11.34 Δ = 8° 46' 35" (RT) D = 1° 30' 00" T = 293.13' R = 3,819.72' L = 585.11' E = 11.23' PC STA. 1163+18.21 PT STA. 1169+03.32</p>	<p>PROPOSED CONSTRUCTION US ROUTE 45 CURVE NO. 5</p> <p>PI STA. 1189+11.90 Δ = 23° 20' 28" (LT) D = 3° 00' 00" T = 394.49' R = 1,909.86' L = 778.04' E = 40.32' PC STA. 1185+17.41 PT STA. 1192+95.45</p>	<p>PROPOSED CONSTRUCTION CENTER STREET CURVE NO. 6</p> <p>P.I. = STA. 14+11.55 Δ = 2° 32' 30" (RT) D = 0° 15' 00" R = 22,918.32' T = 508.42' L = 1,016.67' E = 5.64' P.C. = STA. 9+03.13 P.T. = STA. 19+19.80</p>	<p>PROPOSED CONSTRUCTION WASHINGTON STREET CURVE NO. 7</p> <p>PI STA. = 106+39.59 Δ = 23° 20' 28" (LT) D = 3° 00' 00" T = 394.49' R = 1,909.86' L = 778.04' E = 40.32' PC STA. = 100+87.29 PT STA. = 110+74.05</p>	<p>PROPOSED CONSTRUCTION WASHINGTON STREET CURVE NO. 8</p> <p>PI STA. = 116+46.79 Δ = 64° 08' 20" (RT) D = 6° 30' 07" R = 881.21' T = 556.86' L = 983.24' E = 161.20' P.C. STA. = 113+89.93 P.T. STA. = 123+83.17</p>
---	--	---	--	---	---	--	---

SUPERELEVATION RATES AND TRANSITIONS ARE SHOWN ON PLAN AND PROFILE DRAWINGS, SHEETS 19-29.

REVISIONS	
NAME	DATE

ILLINOIS DEPARTMENT OF TRANSPORTATION

ALIGNMENT, TIES, AND BENCHMARKS

U.S. ROUTE 45

HORIZ. 100 0 100

SCALE IN FEET

DATE 12/14/09

DRAWN BY SAH

CHECKED BY MJL



12/14/09 - g:\401\2000\0005302\cad\align.sht