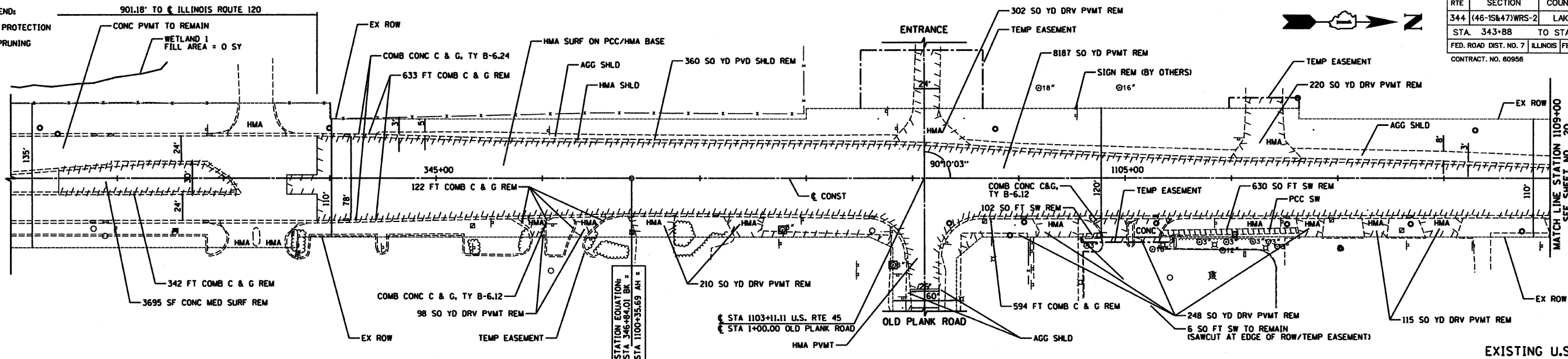


EXISTING PLAN LEGEND:

- TREE TRUNK PROTECTION
- R TREE ROOT PRUNING

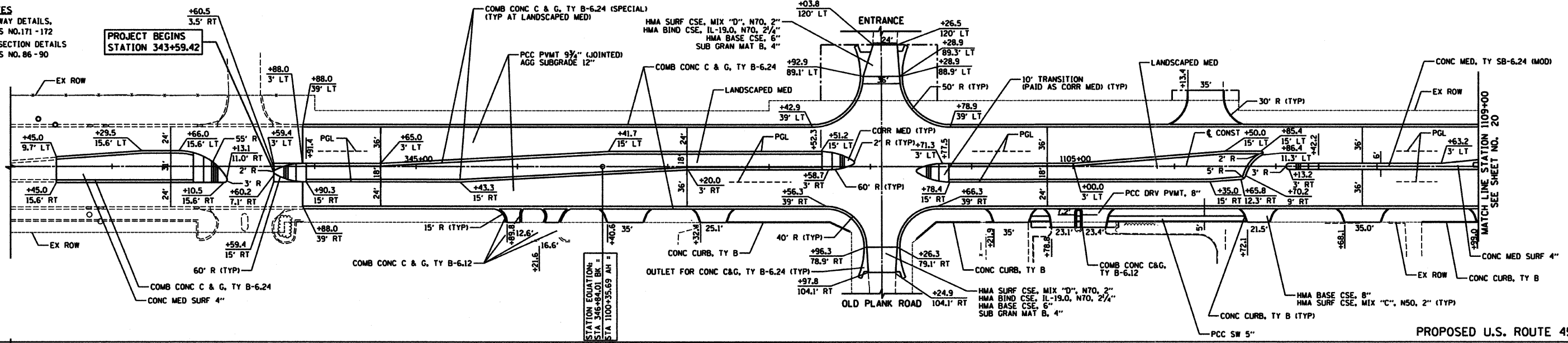
RTE	SECTION	COUNTY	TOTAL SHEETS	SHEET NO
344	(46-15&47)WRS-2	LAKE	234	19
STA. 343+88		TO STA. 1109+00		
FED. ROAD DIST. NO. 7 ILLINOIS FED. AD PROJECT				
CONTRACT NO. 80958				



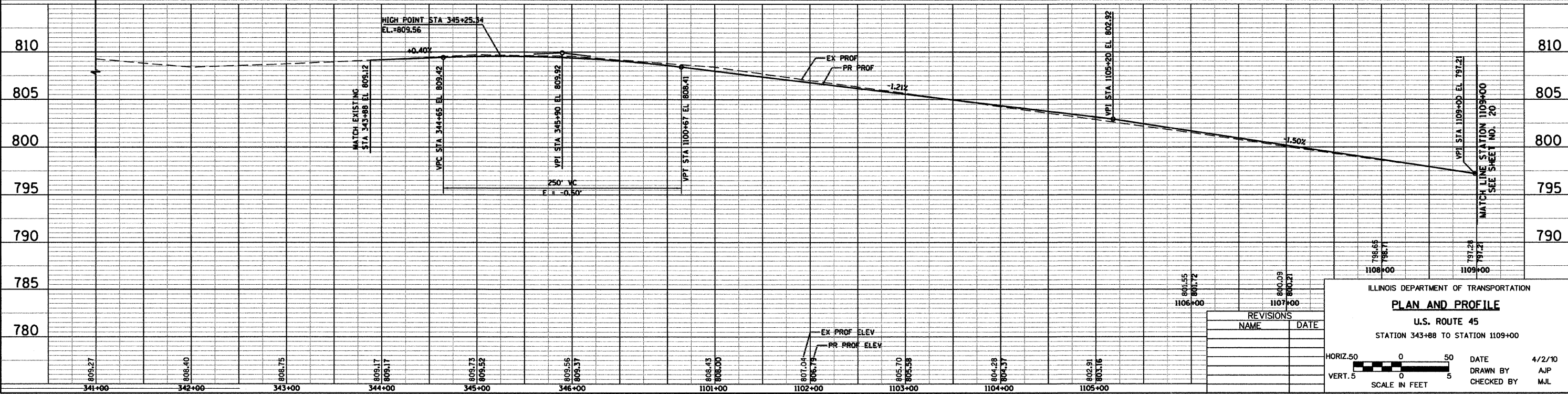
EXISTING U.S. ROUTE 45

- NOTES**
- FOR DRIVEWAY DETAILS, SEE SHEETS NO. 171-172
 - FOR INTERSECTION DETAILS, SEE SHEETS NO. 86-90

PROJECT BEGINS STATION 343+59.42



PROPOSED U.S. ROUTE 45



REVISIONS	
NAME	DATE

ILLINOIS DEPARTMENT OF TRANSPORTATION

PLAN AND PROFILE

U.S. ROUTE 45

STATION 343+88 TO STATION 1109+00

HORIZ. 50 0 50 DATE 4/2/10

VERT. 5 0 5 DRAWN BY AJP

SCALE IN FEET CHECKED BY MJL



4/2/10 - g:\401\2000\0005302\cadd\PP34100.dwg