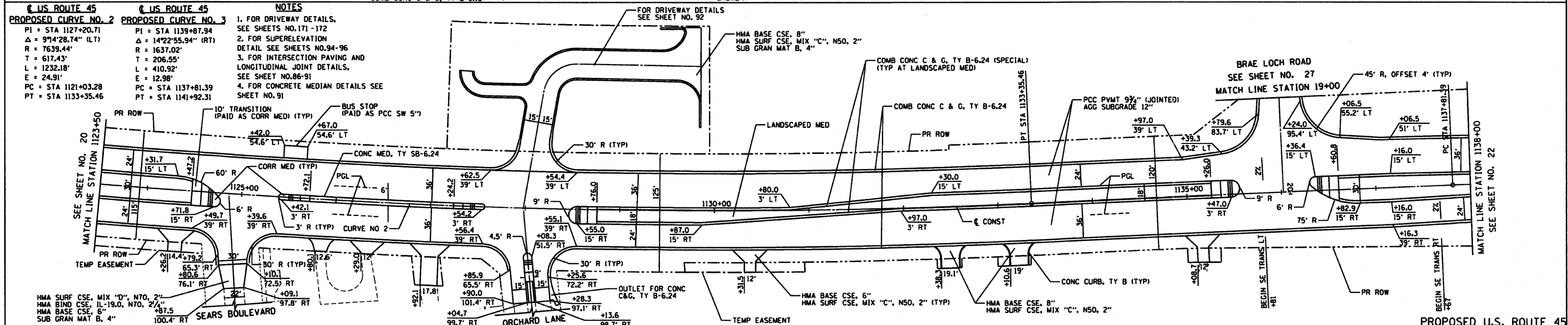
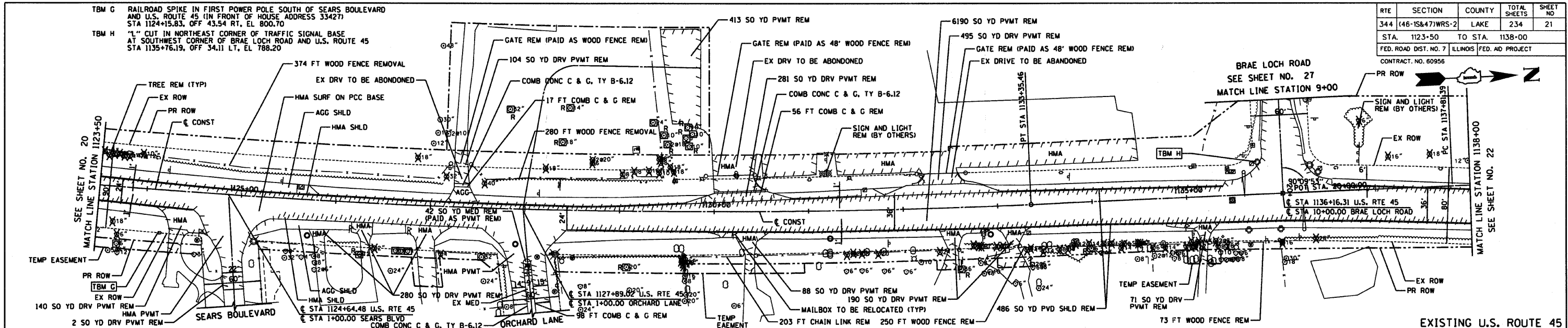


RTE	SECTION	COUNTY	TOTAL SHEETS	SHEET NO.
344	(46-15&47)WRS-2	LAKE	234	21
STA.	1123+50	TO STA.	1138+00	
FED. ROAD DIST. NO. 7	ILLINOIS	FED. AID PROJECT		
CONTRACT NO. 60956				



STATION	ELEVATION	REMARKS
1123+50	800.10	VPC STA 1123+50 EL 800.12
1124+00	800.45	VPI STA 1124+50 EL 800.95
1125+00	800.02	VPT STA 1125+50 EL 800.41
1126+00	799.64	
1127+00	799.23	
1128+00	799.60	
1129+00	799.83	
1130+00	799.06	
1131+00	798.54	
1132+00	798.52	
1133+00	798.14	
1134+00	797.98	
1135+00	797.49	
1136+00	797.44	
1137+00	796.07	
1138+00	796.88	
1139+00	794.51	
1140+00	795.84	
1141+00	792.07	
1142+00	794.15	
1143+00	789.76	
1144+00	791.79	
1145+00	787.41	
1146+00	785.22	
1147+00	786.56	
1148+00	787.55	
1149+00	786.02	
1150+00	786.76	

ILLINOIS DEPARTMENT OF TRANSPORTATION

PLAN AND PROFILE

U.S. ROUTE 45

STATION 1123+50 TO STATION 1138+00

REVISIONS

NO.	NAME	DATE

HORIZ. 50 0 50
 VERT. 5 0 5

SCALE IN FEET

DATE 12/14/09
 DRAWN BY AJP
 CHECKED BY MJL



12/14/09 - g:\401\2000\0005\302\road\p112350.dgn