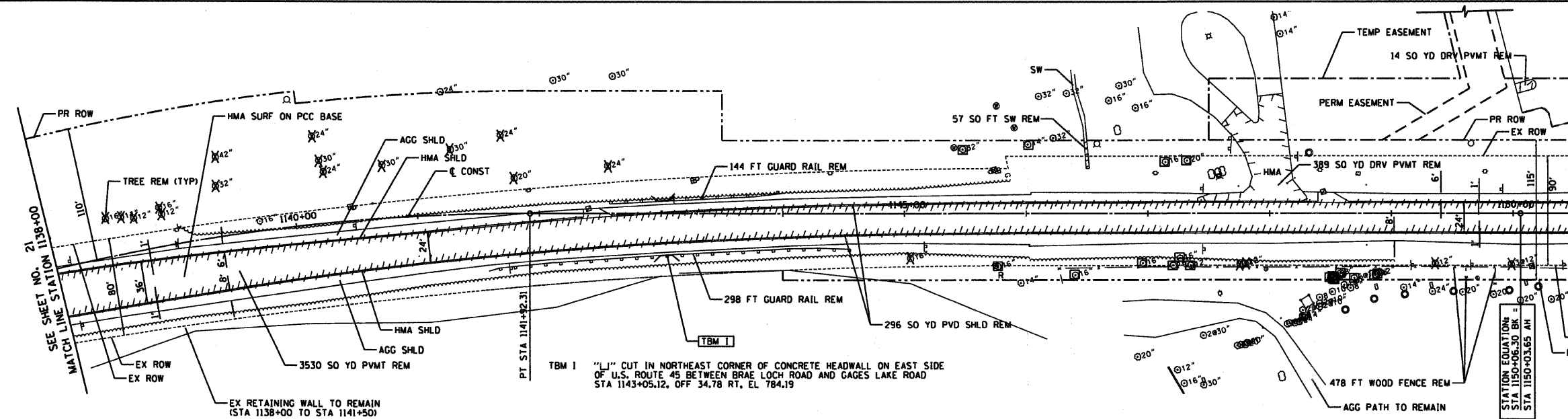
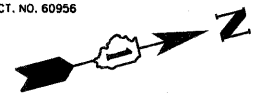


| RTE   | SECTION         | COUNTY          | TOTAL SHEETS | SHEET NO |
|---|-----------------|-----------------|--------------|----------|
| 344   | (46-15&47)WRS-2 | LAKE            | 234          | 22       |
| STA. 1138+00                                    |                 | TO STA. 1150+50 |              |          |
| FED. ROAD DIST. NO. 7 ILLINOIS FED. AID PROJECT |                 |                 |              |          |
| CONTRACT NO. 60956                              |                 |                 |              |          |



MATCH LINE STATION 1138+00  
SEE SHEET NO. 21

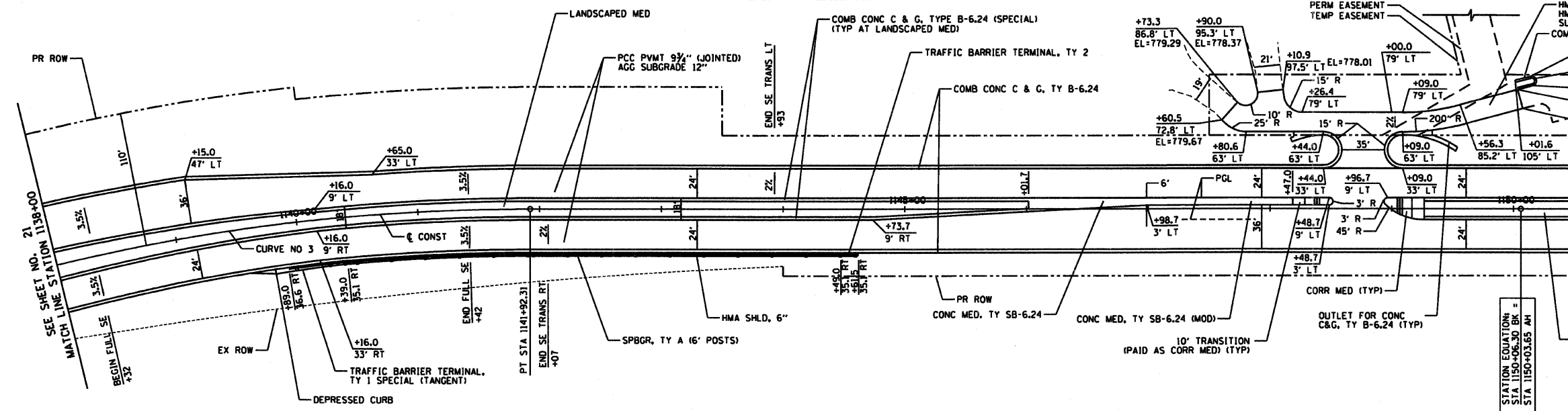
MATCH LINE STATION 1150+50  
SEE SHEET NO. 23

EXISTING U.S. ROUTE 45

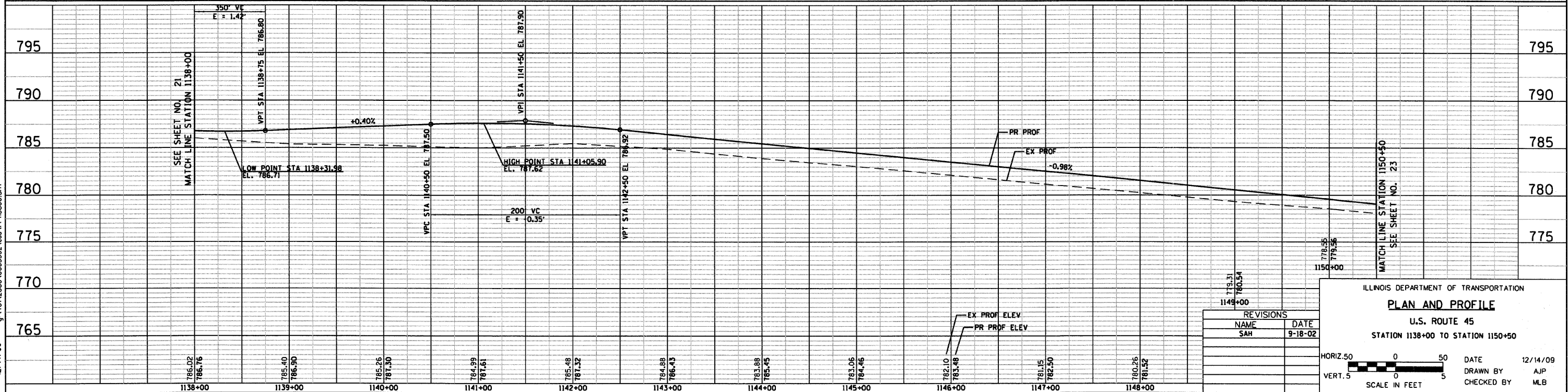
**U.S. ROUTE 45  
PROPOSED CURVE NO. 3**

PI = STA 1139+87.94  
 $\Delta = 14^{\circ}22'55.94''$  (RT)  
R = 1637.02'  
T = 206.55'  
L = 410.92'  
E = 12.98'  
PC = STA 1137+81.39  
PT = STA 1141+92.31

- NOTES**
- FOR CONCRETE MEDIAN DETAILS, SEE SHEET NO. 91
  - FOR SUPERELEVATION DETAILS, SEE SHEETS NO. 94-96
  - FOR OVERFLOW ROUTE DETAILS, SEE SHEET NO. 97



PROPOSED U.S. ROUTE 45



| REVISIONS |         |
|-----------|---------|
| NAME      | DATE    |
| SAH       | 9-18-02 |

ILLINOIS DEPARTMENT OF TRANSPORTATION

**PLAN AND PROFILE**

U.S. ROUTE 45  
STATION 1138+00 TO STATION 1150+50

HORIZ. 50 0 50  
VERT. 5 0 5  
SCALE IN FEET

DATE 12/14/09  
DRAWN BY AJP  
CHECKED BY MLB



12/14/09 - g:\401\2000\0005302\conf\PP113800.SHT