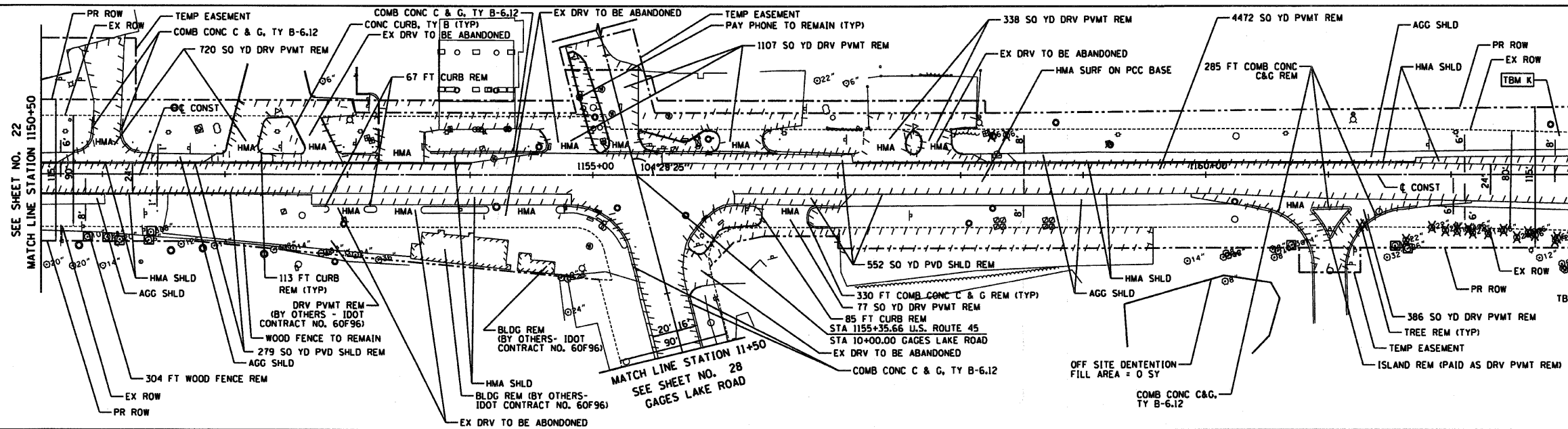
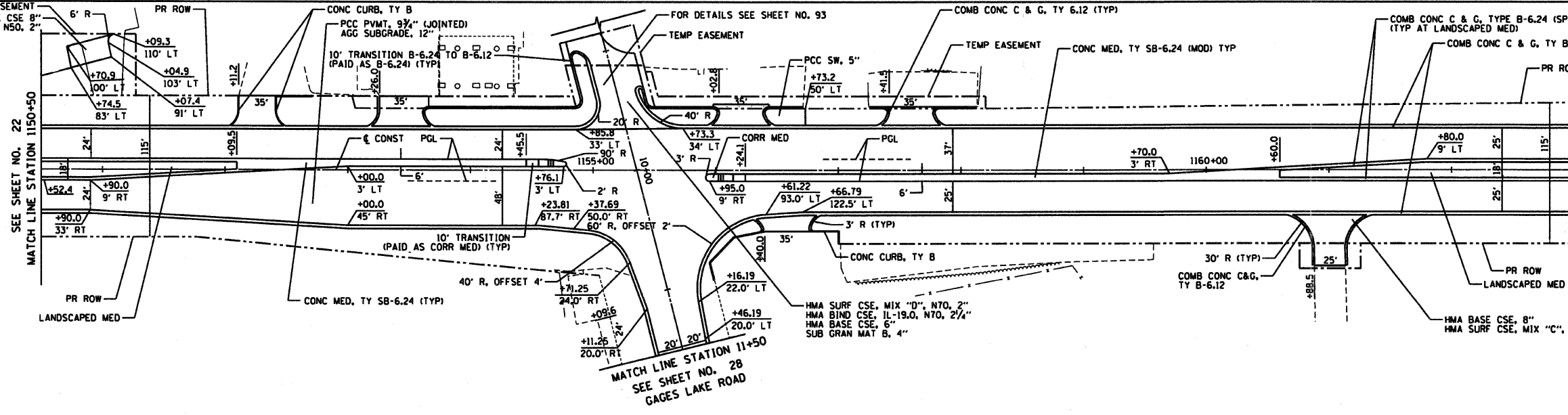


RTE	SECTION	COUNTY	TOTAL SHEETS	SHEET NO
344	(46-15&47)WRS-2	LAKE	234	23
STA.	1150+50	TO STA.	1163+00	
FED. ROAD DIST. NO. 7	ILLINOIS	FED. AID PROJECT		
CONTRACT NO. 60956				

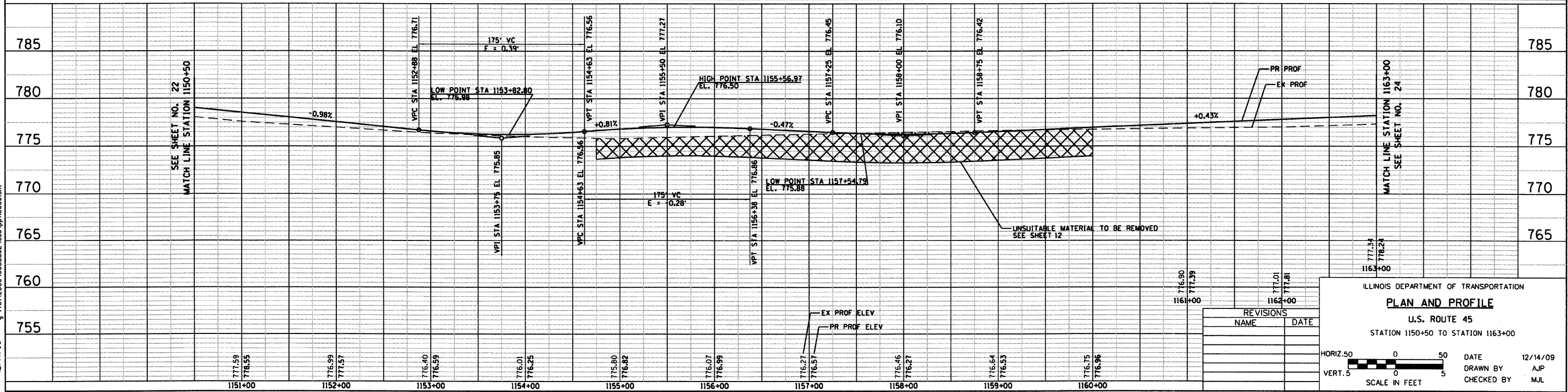


EXISTING U.S. ROUTE 45

- NOTES**
1. FOR CONCRETE MEDIAN DETAILS, SEE SHEETS NO.91
 2. FOR SUPERELEVATION DETAILS, SEE SHEETS NO.94-96
 3. FOR DRIVEWAY DETAILS, SEE SHEETS NO.171-172
 4. FOR INTERSECTION PAVING AND LONGITUDINAL JOINT DETAILS, SEE SHEETS NO.86-91



PROPOSED U.S. ROUTE 45



REVISIONS	
NAME	DATE

ILLINOIS DEPARTMENT OF TRANSPORTATION

PLAN AND PROFILE

U.S. ROUTE 45

STATION 1150+50 TO STATION 1163+00

HORIZ. 50 0 50
VERT. 5 0 5

SCALE IN FEET

DATE 12/14/09
DRAWN BY AJP
CHECKED BY MJL



12/14/09 - g:\401\2000\0005\302\road\p115050.dwg