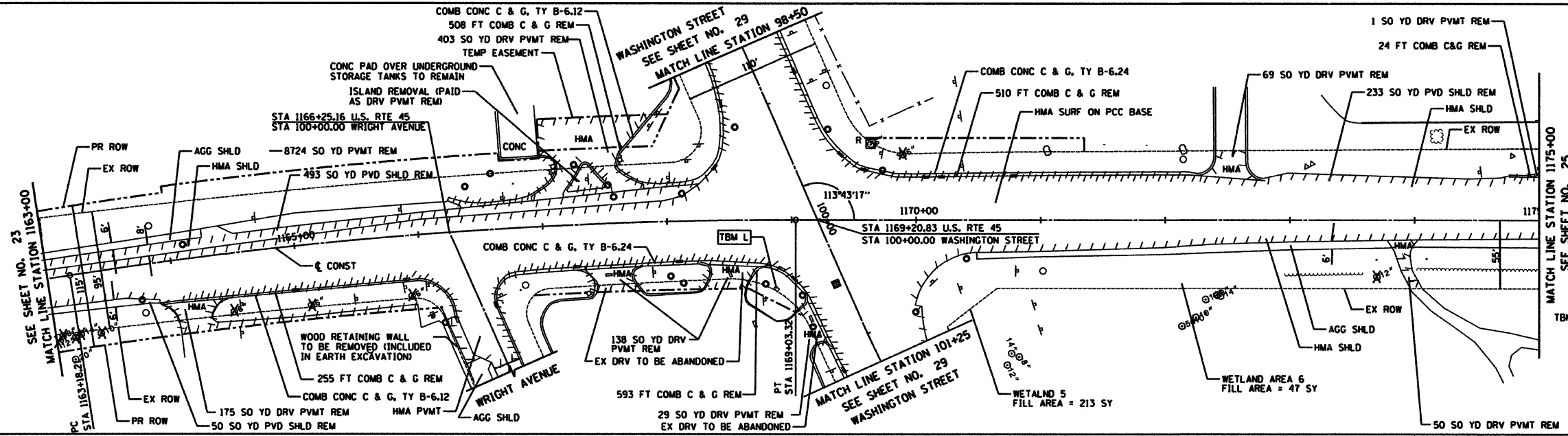
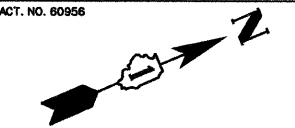
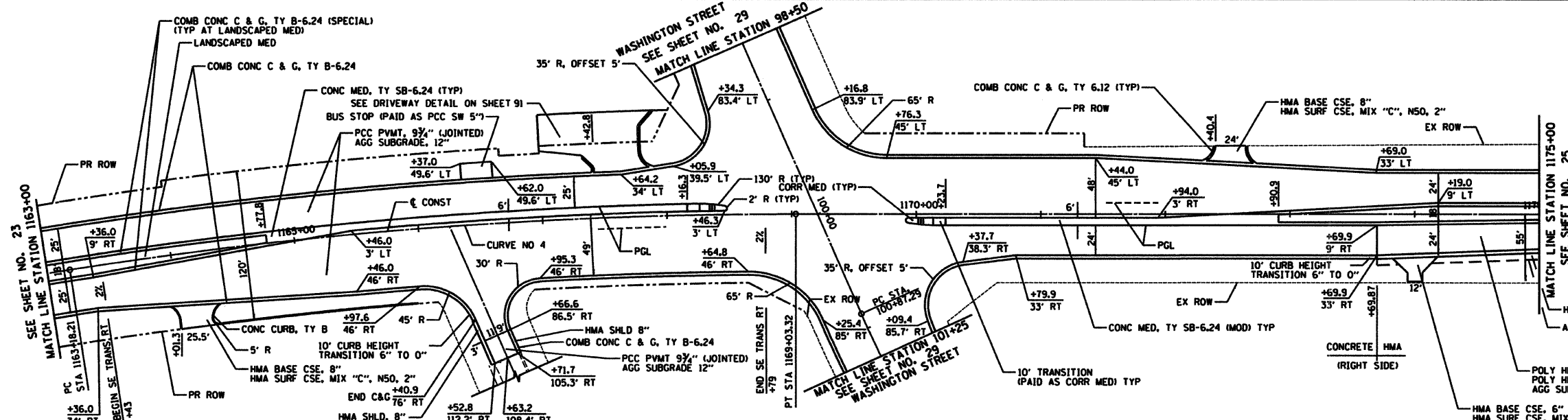


RTE	SECTION	COUNTY	TOTAL SHEETS	SHEET NO
344	(46-18&47)WRS-2	LAKE	234	24
STA. 1163+00		TO STA. 1175+00		
FED. ROAD DIST. NO. 7 ILLINOIS FED. AID PROJECT				
CONTRACT NO. 60956				



TBM L - "L" CUT IN THE NORTHEAST CORNER OF THE TRAFFIC SIGNAL DOUBLE HANDHOLE AT THE SOUTHEAST CORNER OF U.S. ROUTE 45 AND WASHINGTON STREET STA 1168+97.77, OFF 51.24 RT, EL 777.21

EXISTING U.S. ROUTE 45



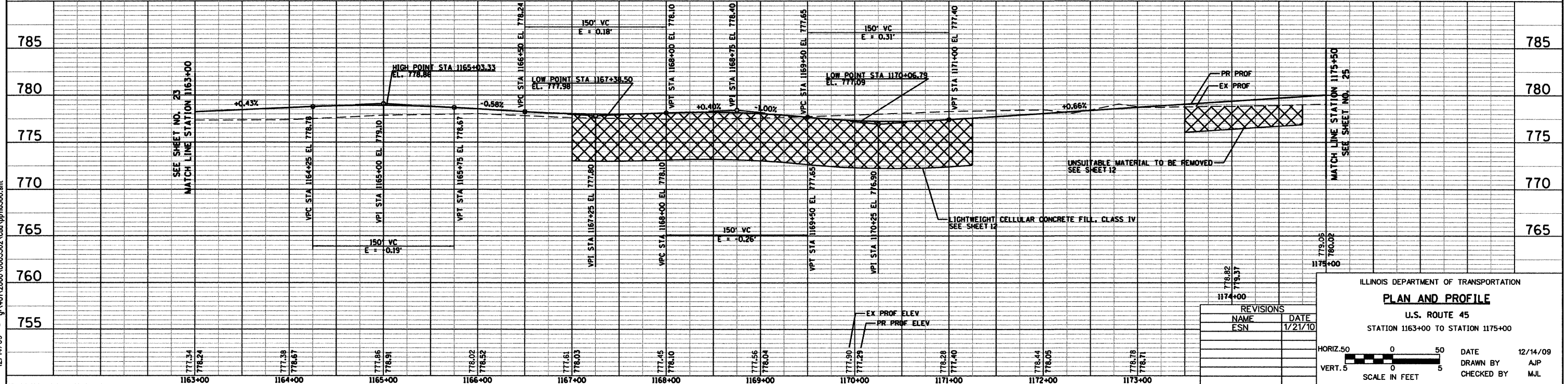
U.S. ROUTE 45 PROPOSED CURVE NO. 4

PI = STA 1166+11.34
 $\Delta = 8^\circ 46' 36.03''$ (RT)
R = 3819.72'
T = 293.13'
L = 585.11'
E = 11.23'
PC = STA 1163+18.21
PT = STA 1169+03.32

NOTES

1. FOR DRIVEWAY DETAILS, SEE SHEETS NO. 171 - 172
2. FOR CONCRETE MEDIAN DETAILS, SEE SHEET NO. 91
3. FOR ISLAND DETAILS, SEE SHEET NO. 91
4. FOR INTERSECTION PAVING AND LONGITUDINAL JOINT DETAILS, SEE SHEETS NO. 86 - 91

PROPOSED U.S. ROUTE 45



REVISIONS	
NAME	DATE
ESN	1/21/10

ILLINOIS DEPARTMENT OF TRANSPORTATION

PLAN AND PROFILE

U.S. ROUTE 45

STATION 1163+00 TO STATION 1175+00

HORIZ. 50' SCALE IN FEET

DATE 12/14/09

DRAWN BY AJP

CHECKED BY MJL



12/14/09 - g:\401\2000\0005302\cod\pp116300.dwg