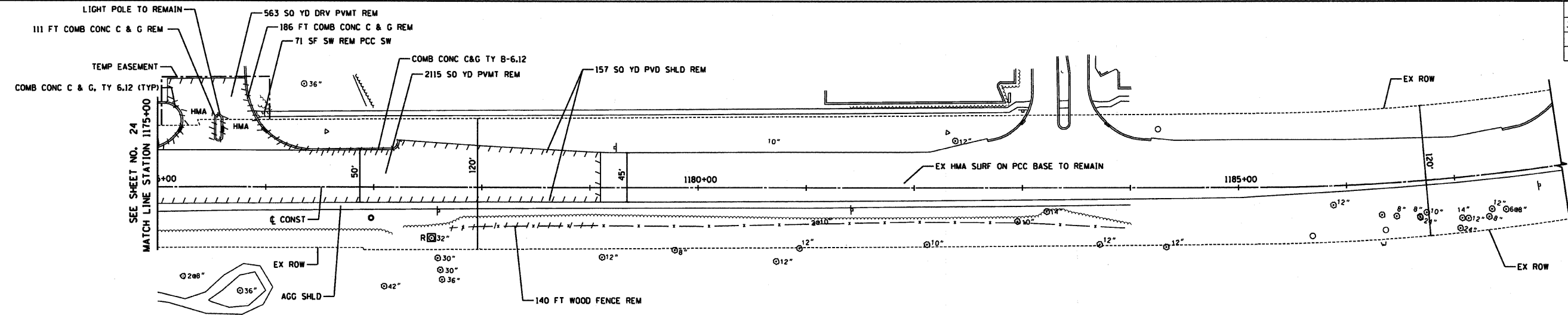
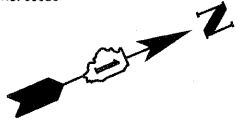
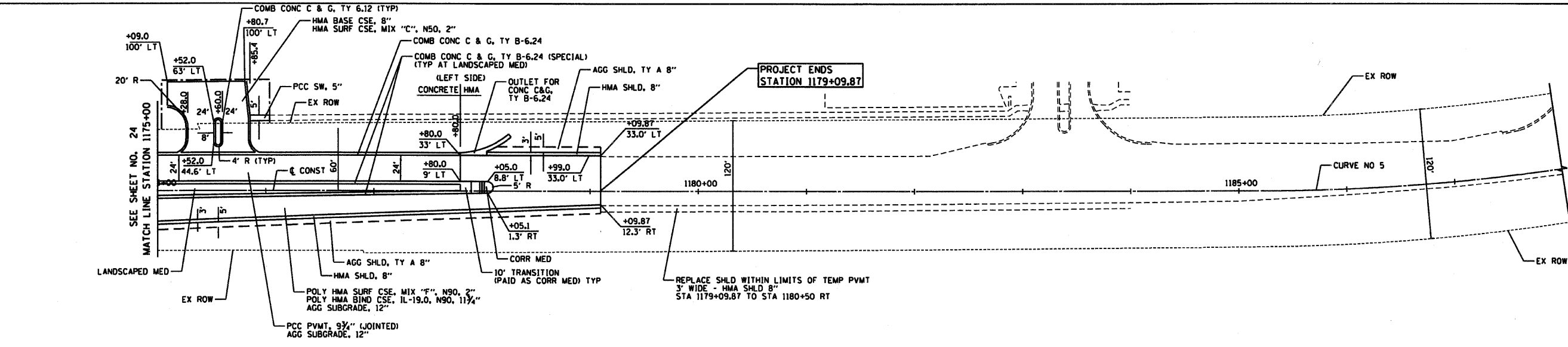


RTE	SECTION	COUNTY	TOTAL SHEETS	SHEET NO
344	(46-15&47)WRS-2	LAKE	234	25
STA.	1175+00	TO STA.	1179+09.87	
FED. ROAD DIST. NO. 7	ILLINOIS	FED. AID PROJECT		
CONTRACT NO. 60956				



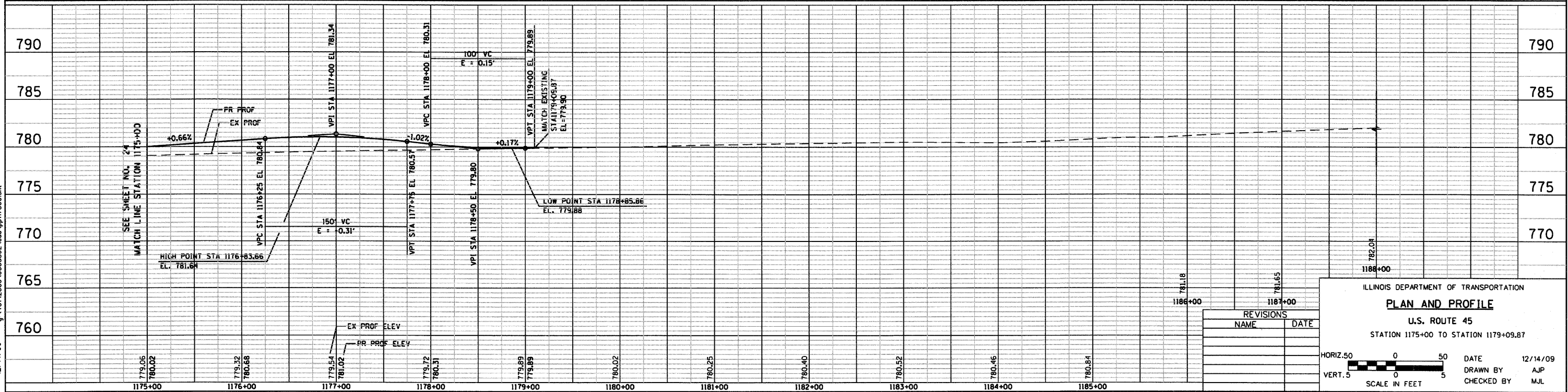
EXISTING U.S. ROUTE 45



NOTES
1. FOR DRIVEWAY DETAILS, SEE SHEETS NO. 171 - 172

**US ROUTE 45
PROPOSED CURVE NO. 5**
 PI = STA 1189+11.90
 Δ = 23°20'28.24" (L.T.)
 R = 1909.86'
 T = 394.49'
 L = 778.04'
 E = 40.32'
 PC = STA 1185+17.41
 PT = STA 1192+95.45

PROPOSED U.S. ROUTE 45



REVISIONS	
NAME	DATE

ILLINOIS DEPARTMENT OF TRANSPORTATION
PLAN AND PROFILE
 U.S. ROUTE 45
 STATION 1175+00 TO STATION 1179+09.87

HORIZ. 50 0 50
 VERT. 5 0 5
 SCALE IN FEET

DATE 12/14/09
 DRAWN BY AJP
 CHECKED BY MJL



12/14/09 - g:\401\2000\0005302\cad\p17500.shl