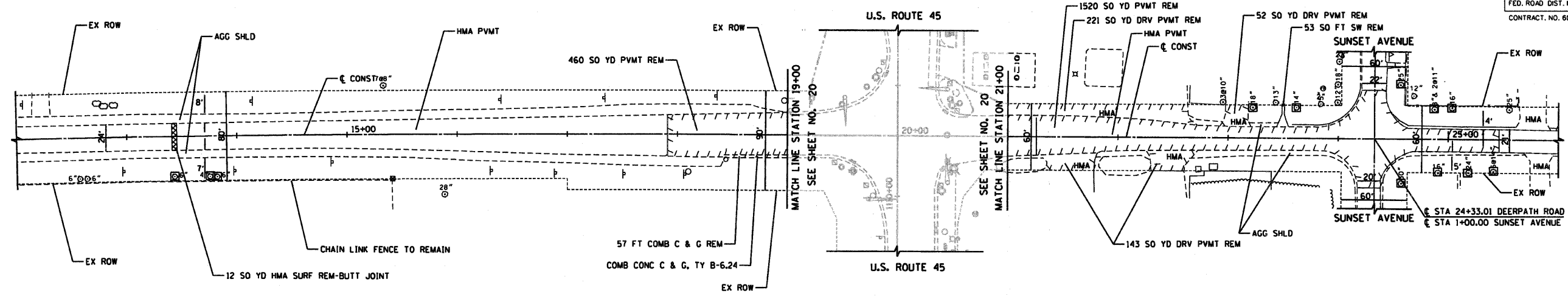


RTE	SECTION	COUNTY	TOTAL SHEETS	SHEET NO
344	(46-15&47)WRS-2	LAKE	234	26
STA	13+41	TO STA	25+46	
FED. ROAD DIST. NO. 7 ILLINOIS FED. AID PROJECT				
CONTRACT NO. 60956				

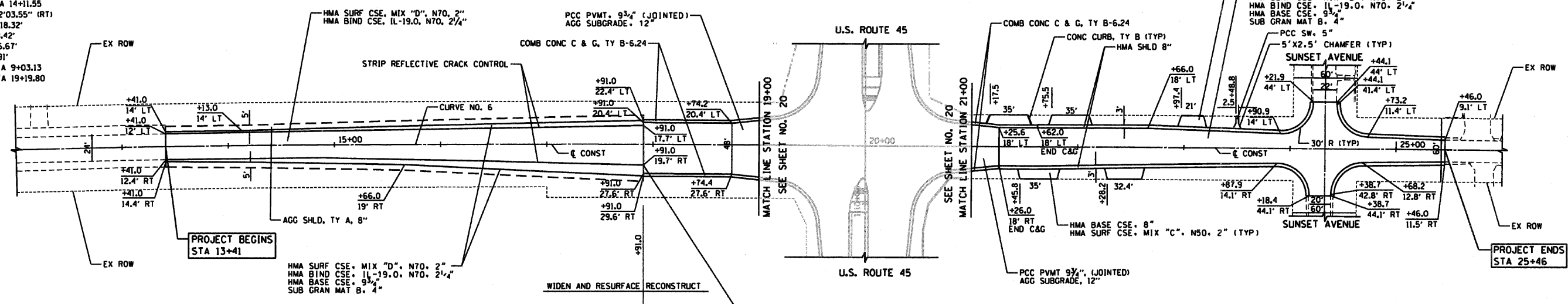


EXISTING CENTER STREET/DEERPETH ROAD

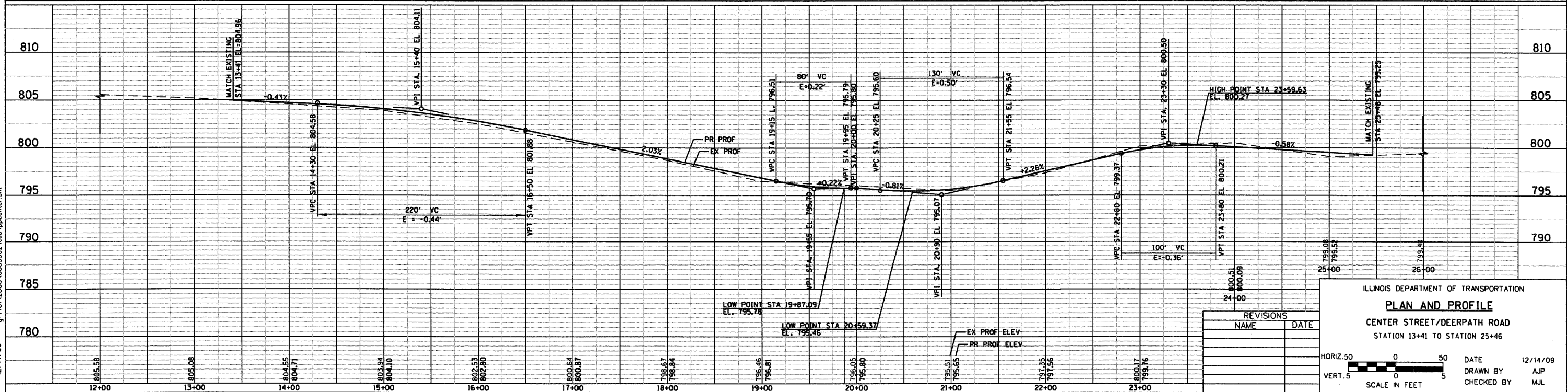
PROPOSED CURVE NO. 6

PI = STA 14+11.55
 $\Delta = 2^{\circ}32'03.55''$ (RT)
R = 22918.32'
T = 508.42'
L = 1016.67'
E = 24.91'
PC = STA 9+03.13
PT = STA 19+19.80

NOTES
1. FOR DRIVEWAY DETAILS, SEE SHEETS NO.171-172



PROPOSED CENTER STREET/DEERPETH ROAD



ILLINOIS DEPARTMENT OF TRANSPORTATION
PLAN AND PROFILE
CENTER STREET/DEERPETH ROAD
STATION 13+41 TO STATION 25+46

REVISIONS	
NAME	DATE

HORIZ. 50 0 50
VERT. 5 0 5
SCALE IN FEET

DATE 12/14/09
DRAWN BY AJP
CHECKED BY MJL



12/14/09 - g:\401\2000\0005302\conf\pcenter.sht