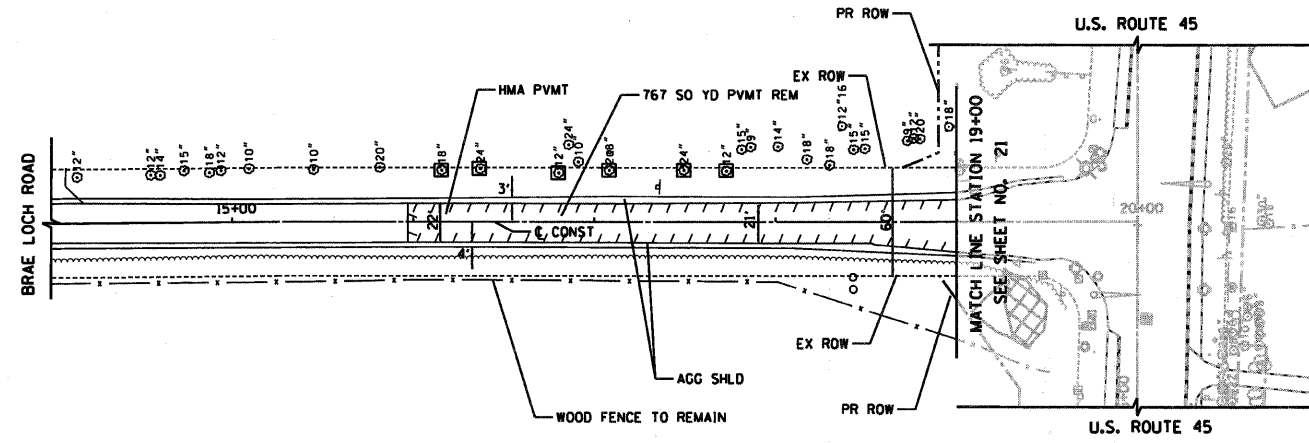
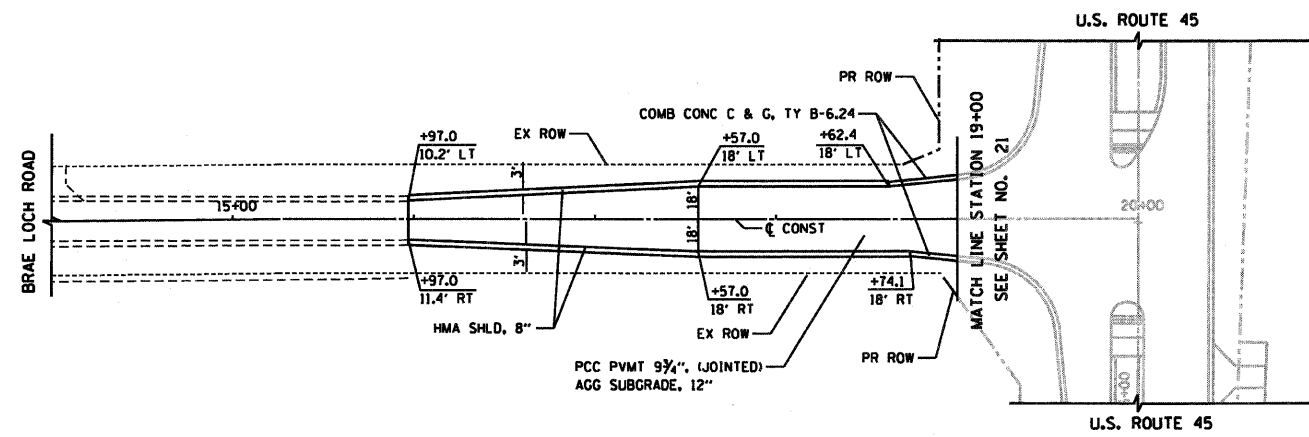


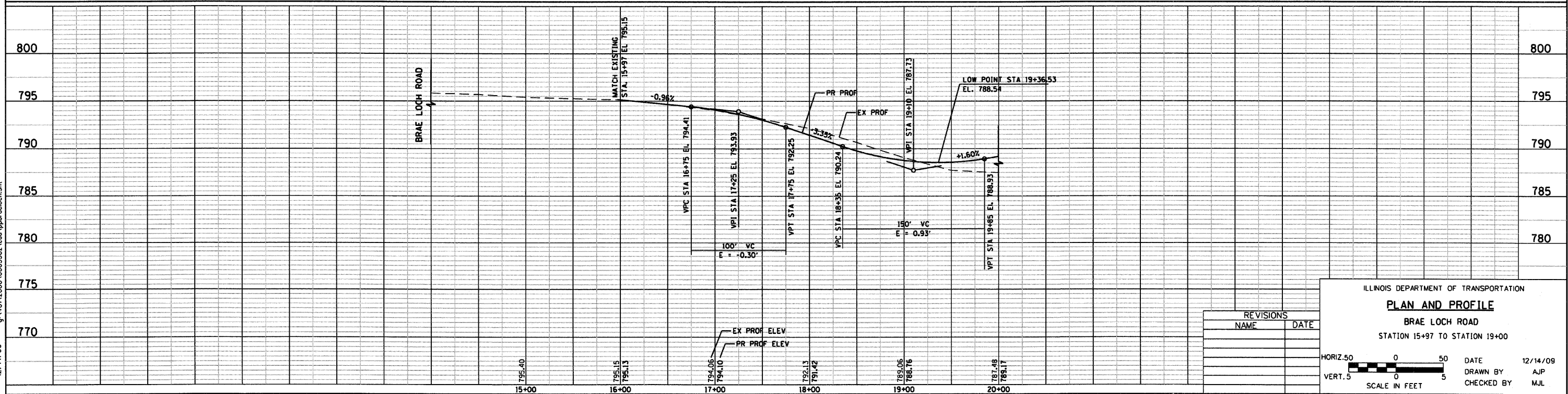
RTE	SECTION	COUNTY	TOTAL SHEETS	SHEET NO
344	(46-1S&47)WRS-2	LAKE	234	27
STA	TO STA	ILLINOIS FED. AID PROJECT		
15+97	19+00	CONTRACT NO. 60956		



EXISTING BRAE LOCH ROAD



PROPOSED BRAE LOCH ROAD



REVISIONS	
NAME	DATE

ILLINOIS DEPARTMENT OF TRANSPORTATION
PLAN AND PROFILE
 BRAE LOCH ROAD
 STATION 15+97 TO STATION 19+00

HORIZ. 50 0 50
 VERT. 5 0 5
 SCALE IN FEET

DATE 12/14/09
 DRAWN BY AJP
 CHECKED BY MJL



12/14/09 - g:\401\2000\0005302\cad\pbr\braeloch.sht