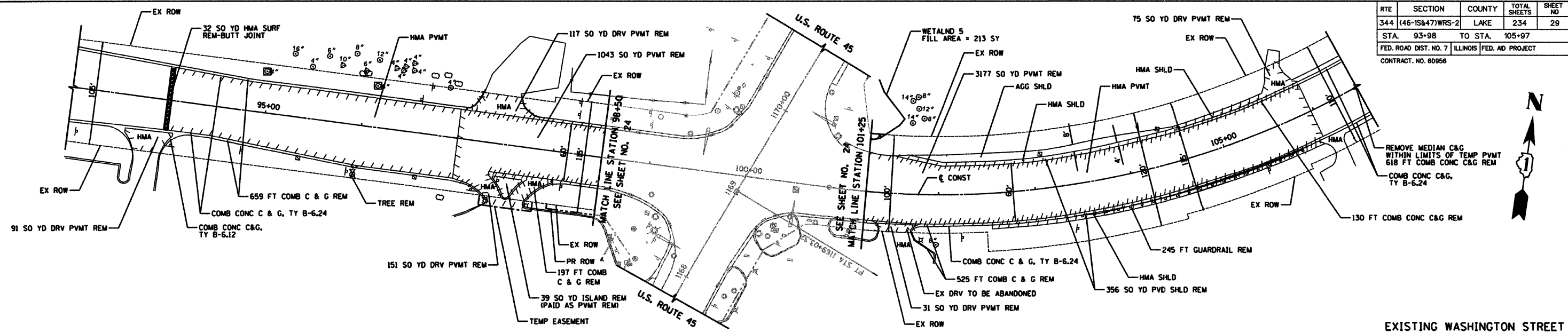
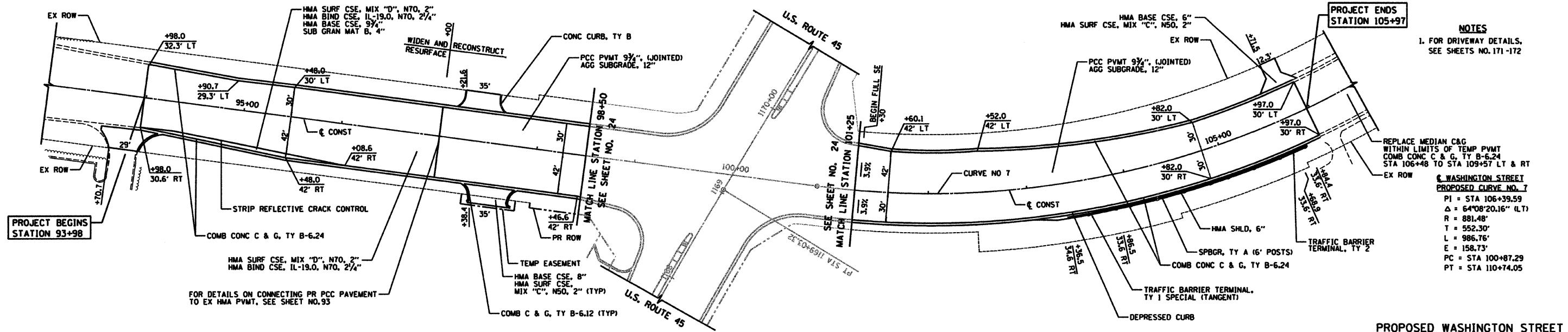


RTE	SECTION	COUNTY	TOTAL SHEETS	SHEET NO
344	(46-15&47)WRS-2	LAKE	234	29
STA. 93+98		TO STA. 105+97		
FED. ROAD DIST. NO. 7 ILLINOIS FED. AID PROJECT				
CONTRACT NO. 60956				



EXISTING WASHINGTON STREET



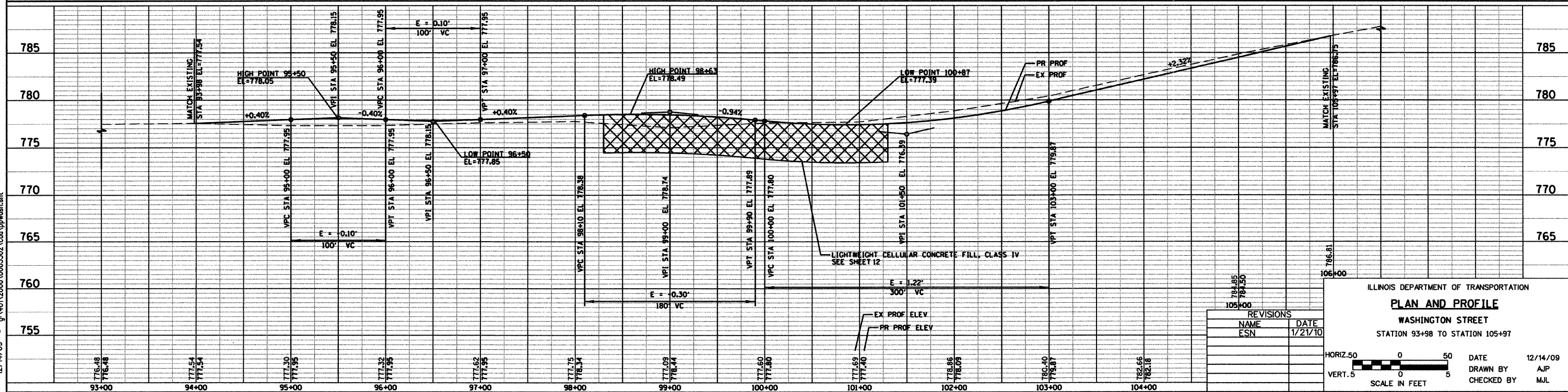
PROPOSED WASHINGTON STREET

PROJECT BEGINS STATION 93+98

PROJECT ENDS STATION 105+97

NOTES
1. FOR DRIVEWAY DETAILS, SEE SHEETS NO. 171-172

WASHINGTON STREET PROPOSED CURVE NO. 7
 PI = STA 106+39.59
 Δ = 64°08'20.16" (LT)
 R = 881.48'
 T = 552.30'
 L = 986.73'
 E = 158.73'
 PC = STA 100+87.29
 PT = STA 110+74.05



REVISIONS	
NAME	DATE
ESN	1/21/10

ILLINOIS DEPARTMENT OF TRANSPORTATION
PLAN AND PROFILE
 WASHINGTON STREET
 STATION 93+98 TO STATION 105+97

HORIZ. 50 0 50
 VERT. 5 0 5
 SCALE IN FEET

DATE 12/14/09
 DRAWN BY AJP
 CHECKED BY MJL



12/14/09 - g:\401\2000\0005302.cad\ppwash.sht