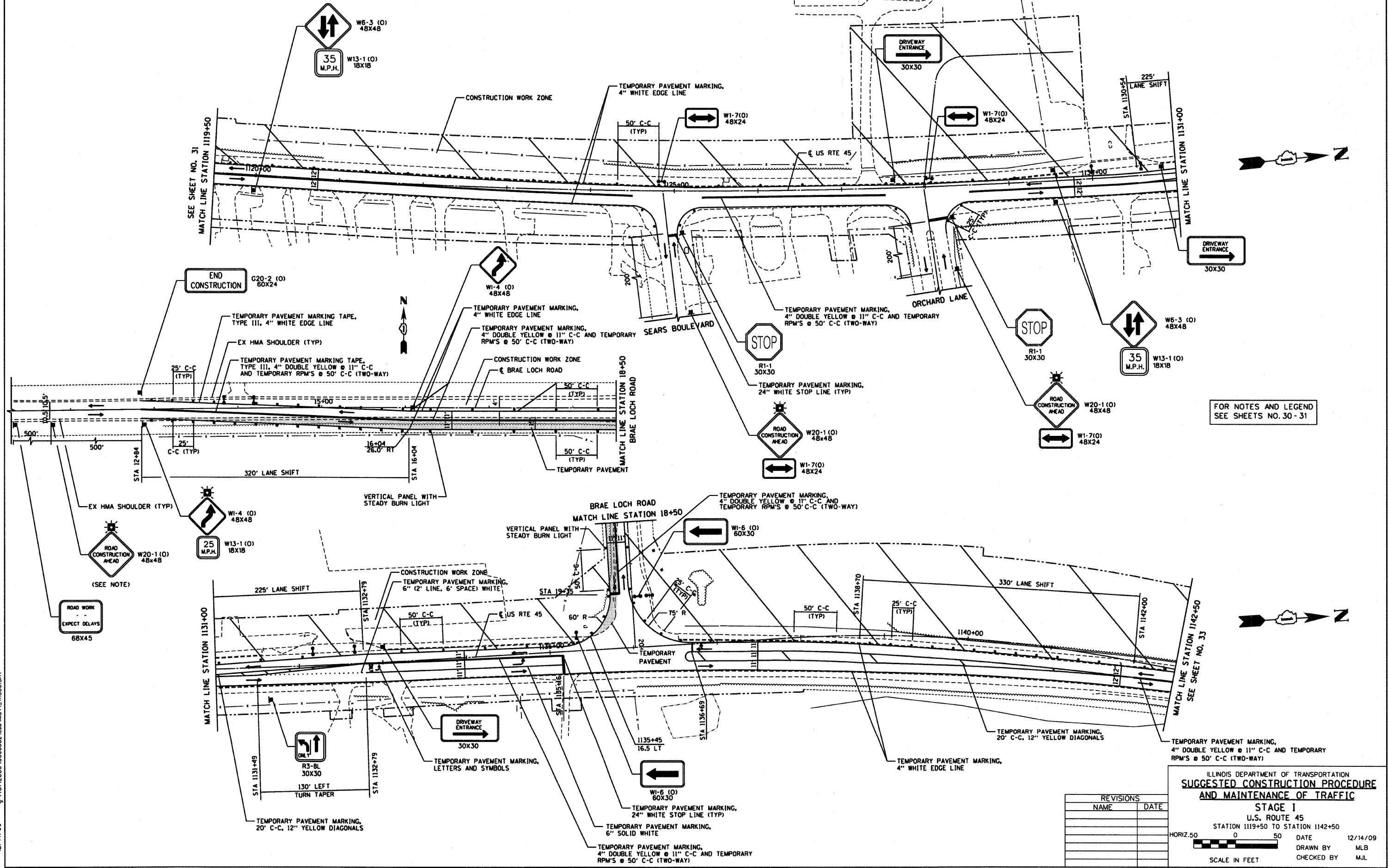


RTE	SECTION	COUNTY	TOTAL SHEETS	SHEET NO
344	(46-15&47)WRS-2	LAKE	234	32
STA.	1119+50	TO STA.	1142+50	
FED. ROAD DIST. NO. 7	ILLINOIS FED. AID PROJECT			
CONTRACT NO. 60956				



FOR NOTES AND LEGEND
SEE SHEETS NO. 30 - 31

ILLINOIS DEPARTMENT OF TRANSPORTATION
**SUGGESTED CONSTRUCTION PROCEDURE
AND MAINTENANCE OF TRAFFIC**

STAGE I
U.S. ROUTE 45
STATION 1119+50 TO STATION 1142+50

HORIZ. 50 0 50 DATE 12/14/09
SCALE IN FEET DRAWN BY MLB
CHECKED BY MJL

REVISIONS	
NAME	DATE