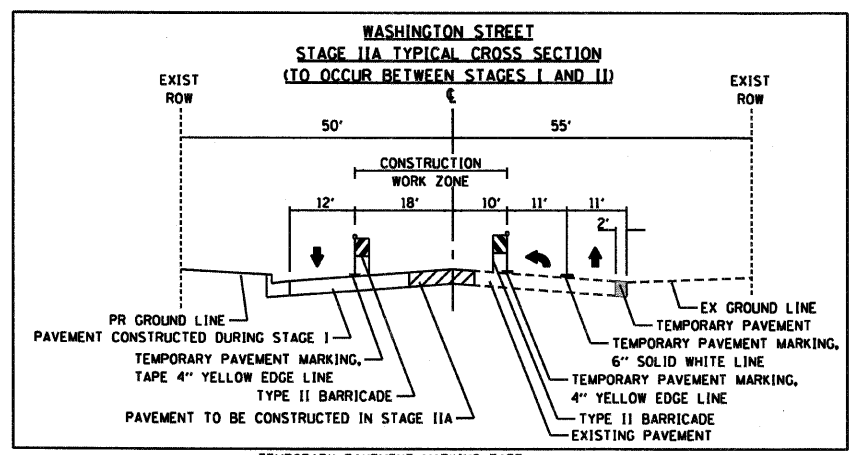


RTE	SECTION	COUNTY	TOTAL SHEETS	SHEET NO.
344	(46-15&47)WRS-2	LAKE	234	35
STA.	TO STA.			
FED. ROAD DIST. NO. 7	ILLINOIS FED. AID PROJECT			
CONTRACT NO. 60956				

FOR NOTES AND LEGEND  
SEE SHEETS NO. 30-31

FOR NOTES AND LEGEND  
SEE SHEETS NO. 30-31



12/14/09 - g:\401\2000\0005302\cod\mol\1200.shd

REVISIONS	
NAME	DATE

ILLINOIS DEPARTMENT OF TRANSPORTATION  
**SUGGESTED CONSTRUCTION PROCEDURE AND MAINTENANCE OF TRAFFIC**  
STAGE I  
U.S. ROUTE 45  
CENTER STREET/DEERPATH ROAD & WASHINGTON STREET

HORIZ. 50 0 50  
SCALE IN FEET

DATE 12/14/09  
DRAWN BY MLB  
CHECKED BY MJL

