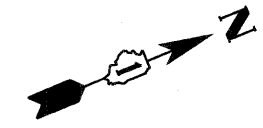
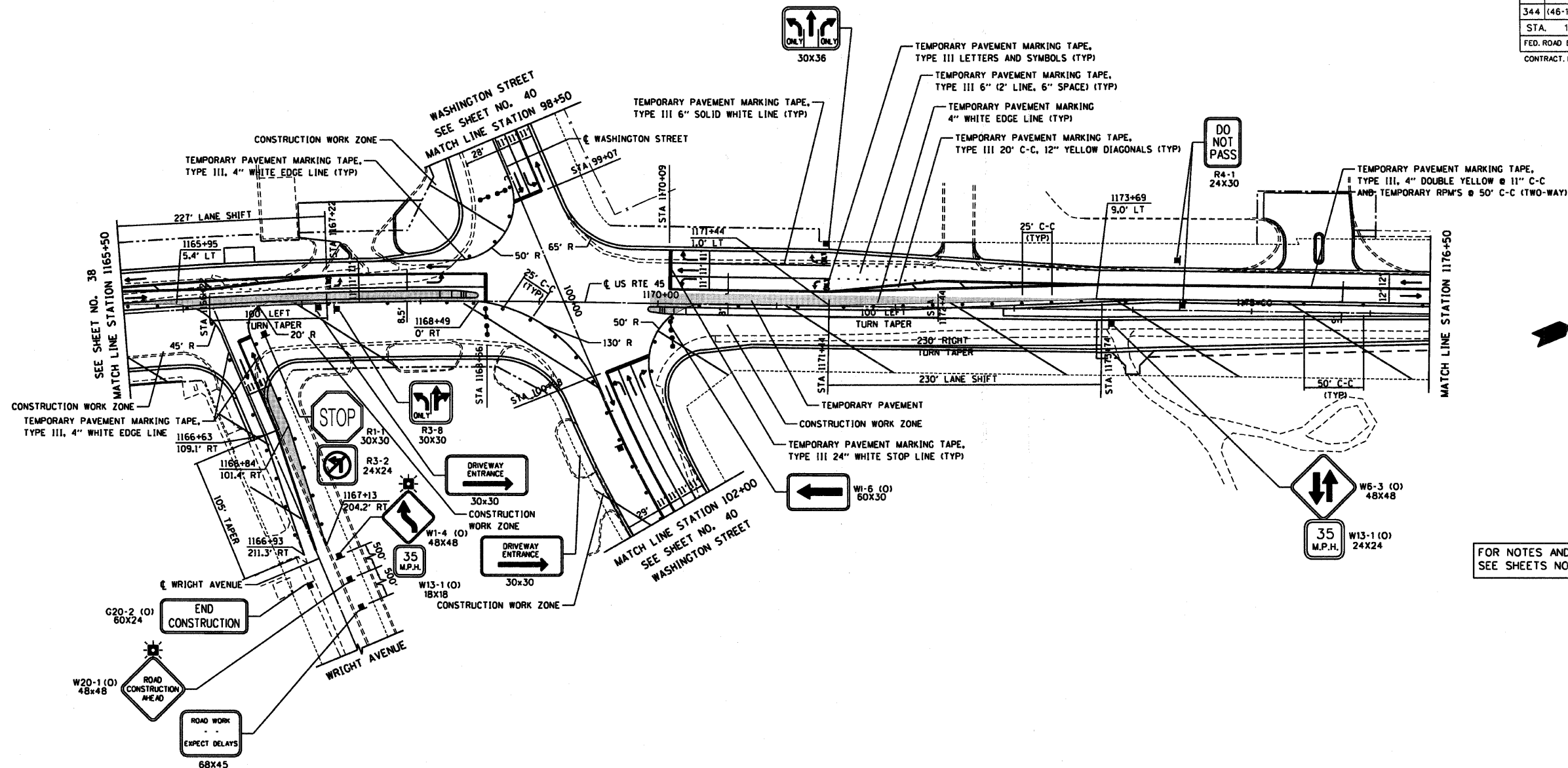
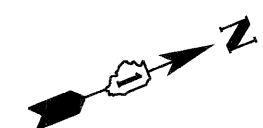
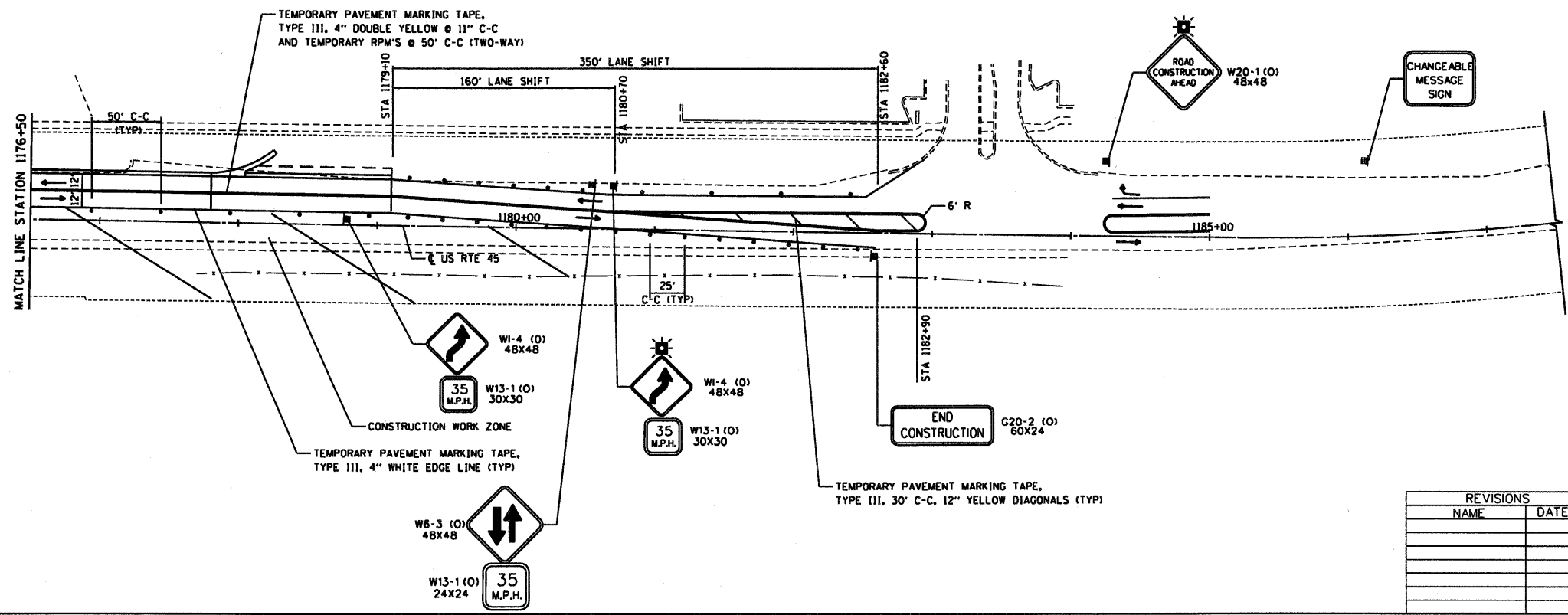


RTE	SECTION	COUNTY	TOTAL SHEETS	SHEET NO
344	(46-1S&47)WRS-2	LAKE	234	39
STA.	1165+50	TO STA.	1179+09.87	
FED. ROAD DIST. NO. 7	ILLINOIS	FED. AID PROJECT		
CONTRACT NO. 60956				



FOR NOTES AND LEGEND  
SEE SHEETS NO. 30-31

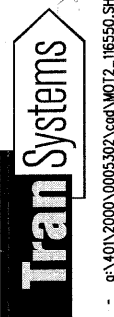


REVISIONS	
NAME	DATE

ILLINOIS DEPARTMENT OF TRANSPORTATION  
**SUGGESTED CONSTRUCTION PROCEDURE  
 AND MAINTENANCE OF TRAFFIC**  
 STAGE II  
 U.S. ROUTE 45  
 STATION 1165+50 TO STATION 1179+09.87

HORIZ. 50 0 50  
 SCALE IN FEET

DATE 12/14/09  
 DRAWN BY MLB  
 CHECKED BY MJL



12/14/09 - 9:40:11 2000:0005:302:cad:W012\_116550.SHT