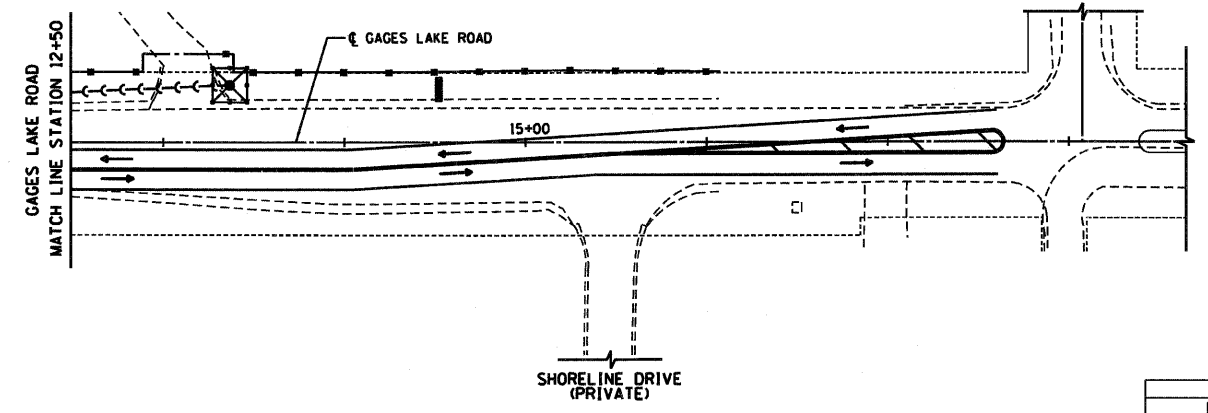
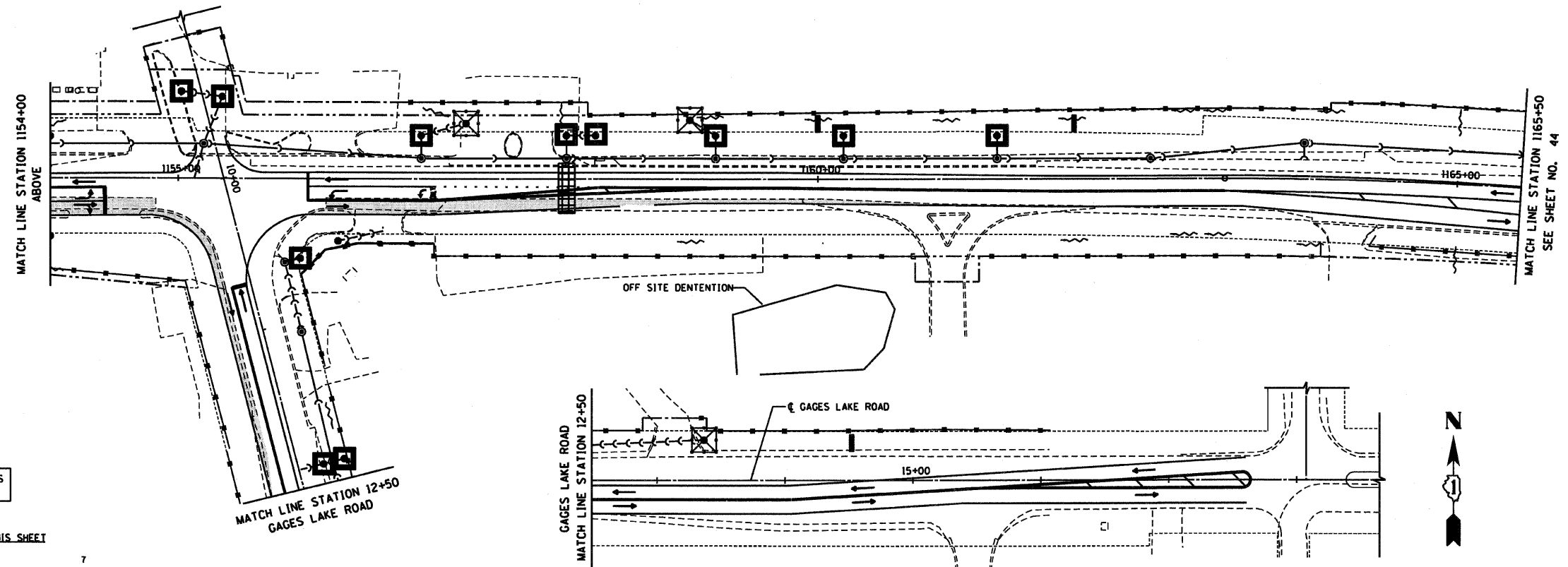
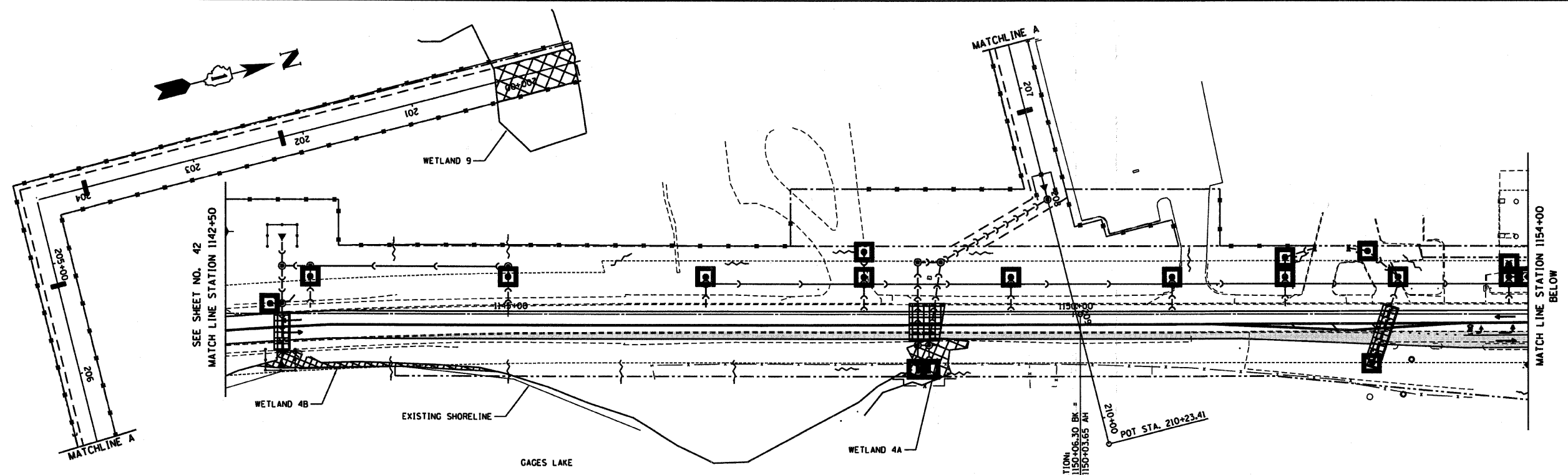


RTE	SECTION	COUNTY	TOTAL SHEETS	SHEET NO
344	(46-1S&47)WRS-2	LAKE	234	43
STA.	1142+50	TO STA.	1165+50	
FED. ROAD DIST. NO. 7		ILLINOIS FED. AID PROJECT		
CONTRACT NO. 60956				



FOR LEGEND AND NOTES
SEE SHEET NO. 41

ESTIMATED QUANTITIES FOR THIS SHEET

TEMPORARY DITCH CHECKS	7
INLET FILTERS	32
PERIMETER EROSION BARRIER	5744'
TEMPORARY FENCE	69'
PATCHING	561 SY

REVISIONS	
NAME	DATE

ILLINOIS DEPARTMENT OF TRANSPORTATION
EROSION CONTROL PLAN
STAGE I
U.S. ROUTE 45
STATION 1142+50 TO STATION 1165+50

HORIZ. 50 0 50
SCALE IN FEET

DATE 12/14/09
DRAWN BY SAH
CHECKED BY MJL



12/14/09 - g:\401\2000\0005\302\cadd\ec1_114250.dgn