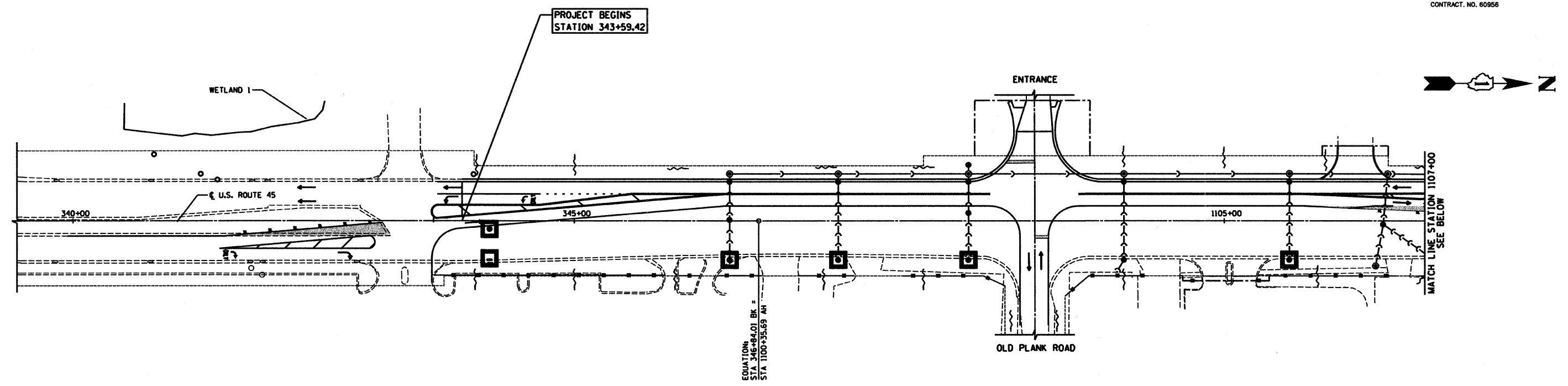


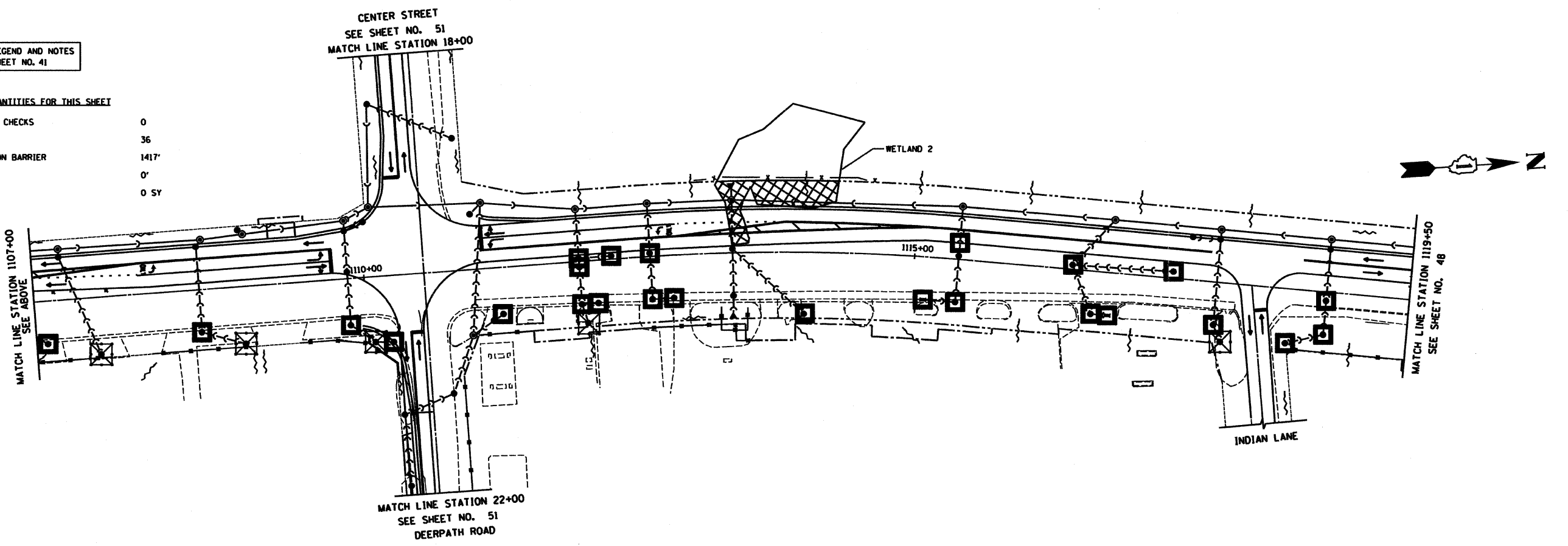
RTE	SECTION	COUNTY	TOTAL SHEETS	SHEET NO
344	(46-1S&47)WRS-2	LAKE	234	47
STA. 343+59.42		TO STA. 1119+50		
FED. ROAD DIST. NO. 7		ILLINOIS	FED. AID PROJECT	
CONTRACT NO. 80956				



FOR LEGEND AND NOTES
SEE SHEET NO. 41

ESTIMATED QUANTITIES FOR THIS SHEET

TEMPORARY DITCH CHECKS	0
INLET FILTERS	36
PERIMETER EROSION BARRIER	1417'
TEMPORARY FENCE	0'
PATCHING	0 SY



4/2/10 - g:\401\2000\0005302\ecp\EC2_34100.SHT

REVISIONS	
NAME	DATE

ILLINOIS DEPARTMENT OF TRANSPORTATION
EROSION CONTROL PLAN
STAGE II
U.S. ROUTE 45
STATION 343+59.42 TO STATION 1119+50

HORIZ. 50 0 50
SCALE IN FEET

DATE 4/2/10
DRAWN BY SAH
CHECKED BY MJL