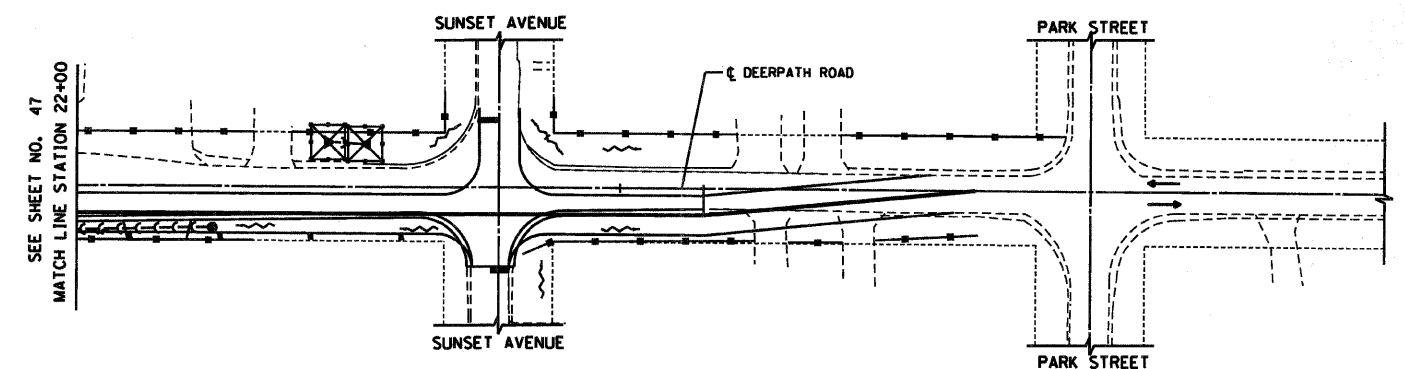
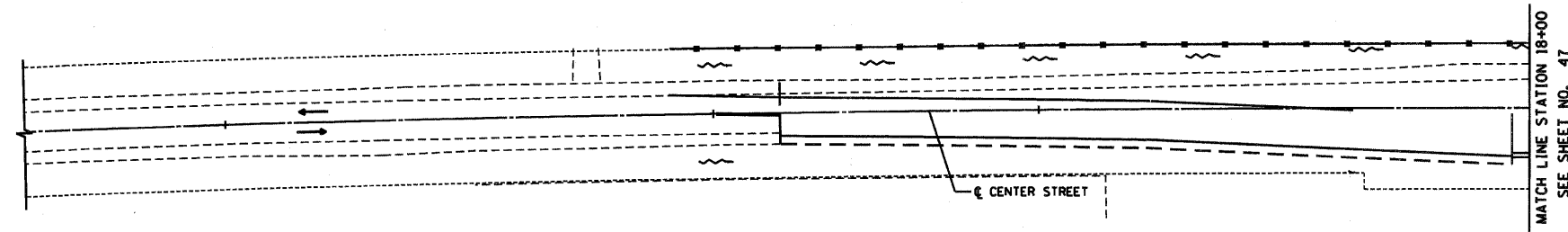


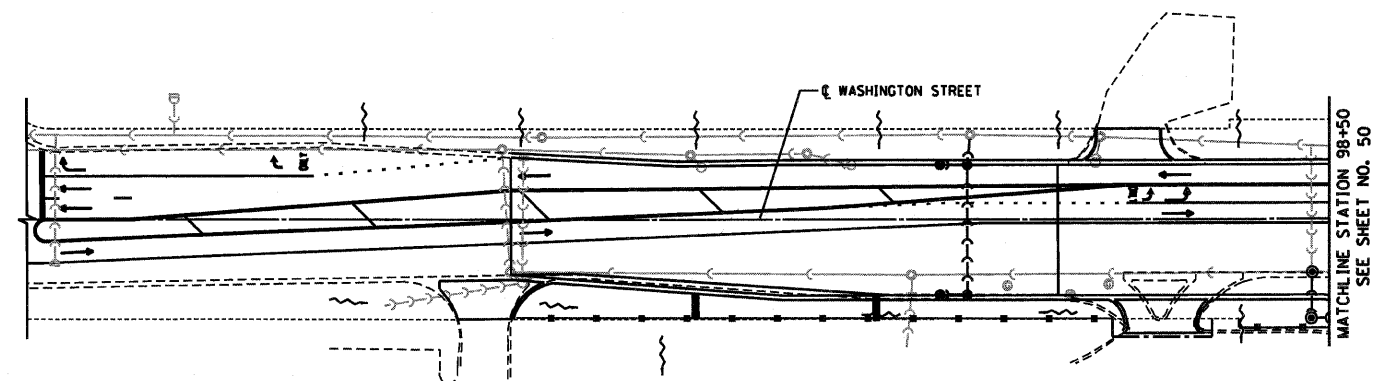
|                       |                 |          |                  |          |
|-----------------------|-----------------|----------|------------------|----------|
| RTE                   | SECTION         | COUNTY   | TOTAL SHEETS     | SHEET NO |
| 344                   | (46-1S&47)WRS-2 | LAKE     | 234              | 51       |
| STA.                  | TO STA.         |          |                  |          |
| FED. ROAD DIST. NO. 7 |                 | ILLINOIS | FED. AID PROJECT |          |
| CONTRACT NO. 60956    |                 |          |                  |          |



**ESTIMATED QUANTITIES FOR THIS WINDOW**

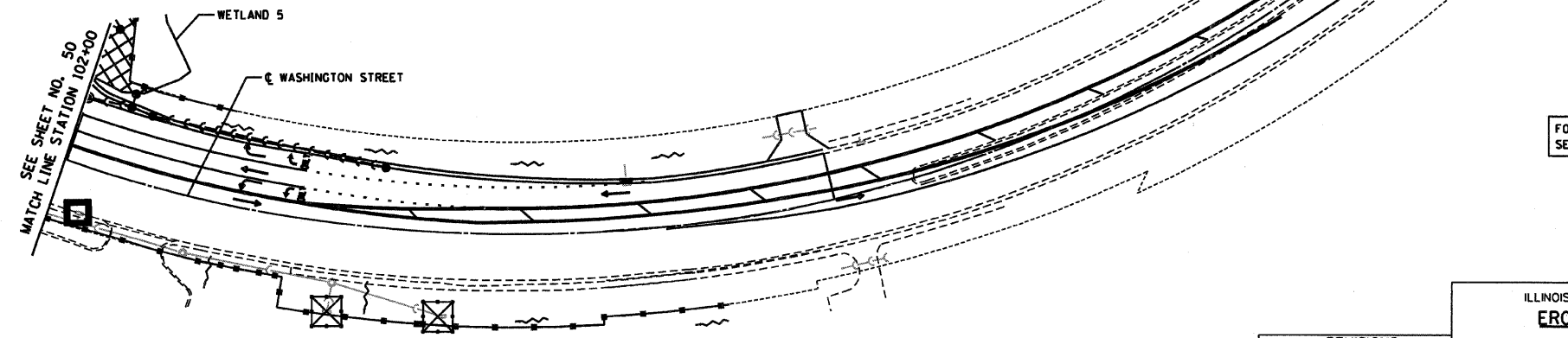
|                           |       |
|---------------------------|-------|
| TEMPORARY DITCH CHECKS    | 0     |
| INLET FILTERS             | 2     |
| PERIMETER EROSION BARRIER | 1298' |
| TEMPORARY FENCE           | 0'    |
| PATCHING                  | 0 SY  |

CENTER STREET/DEERPETH ROAD



**ESTIMATED QUANTITIES FOR THIS WINDOW**

|                           |       |
|---------------------------|-------|
| TEMPORARY DITCH CHECKS    | 2     |
| INLET FILTERS             | 3     |
| PERIMETER EROSION BARRIER | 1092' |
| TEMPORARY FENCE           | 0'    |
| PATCHING                  | 0 SY  |



FOR LEGEND AND NOTES  
SEE SHEET NO. 41

WASHINGTON STREET

| REVISIONS |      |
|-----------|------|
| NAME      | DATE |
|           |      |
|           |      |
|           |      |
|           |      |
|           |      |

ILLINOIS DEPARTMENT OF TRANSPORTATION  
**EROSION CONTROL PLAN**  
**STAGE II**  
U.S. ROUTE 45  
CENTER STREET/DEERPETH ROAD & WASHINGTON STREET

HORIZ. 50 0 50  
SCALE IN FEET

DATE 12/14/09  
DRAWN BY SAH  
CHECKED BY MJL



12/14/09 - g:\4011\2000\0005\302\cadd\ec2\_1200.sht