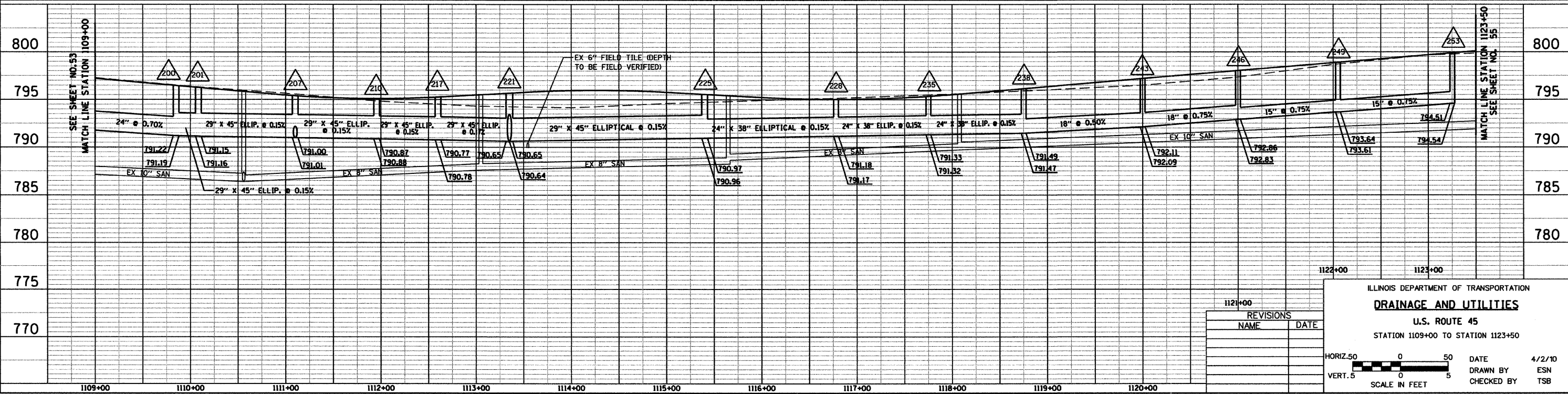
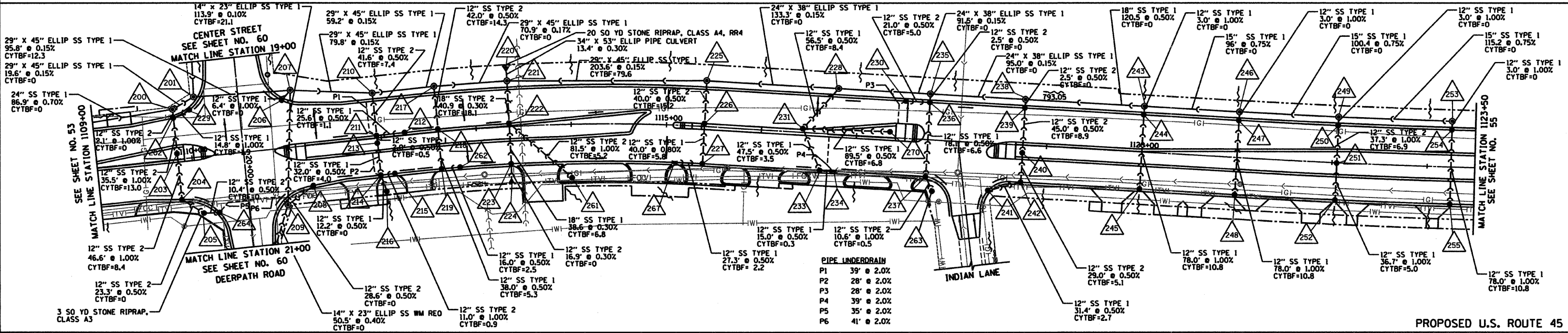
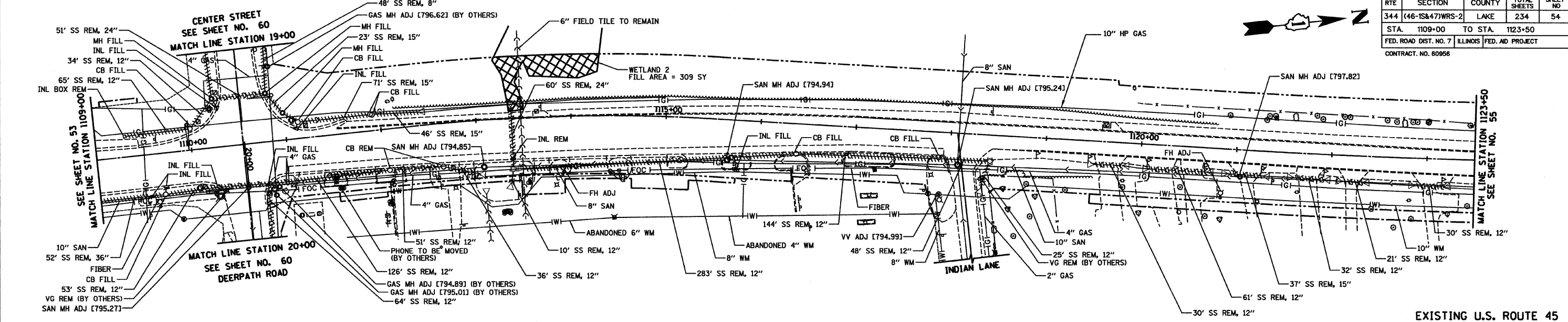


RTE	SECTION	COUNTY	TOTAL SHEETS	SHEET NO
344	(46-1S&47)WRS-2	LAKE	234	54
STA. 1109+00		TO STA. 1123+50		
FED. ROAD DIST. NO. 7 ILLINOIS FED. AID PROJECT				
CONTRACT NO. 80956				



REVISIONS	
NAME	DATE

ILLINOIS DEPARTMENT OF TRANSPORTATION
DRAINAGE AND UTILITIES
 U.S. ROUTE 45
 STATION 1109+00 TO STATION 1123+50

HORIZ. 50 0 50
 VERT. 5 0 5
 SCALE IN FEET

DATE 4/2/10
 DRAWN BY ESN
 CHECKED BY TSB



4/2/10 - g:\401\2000\0005302\cadd\1109000.SHT