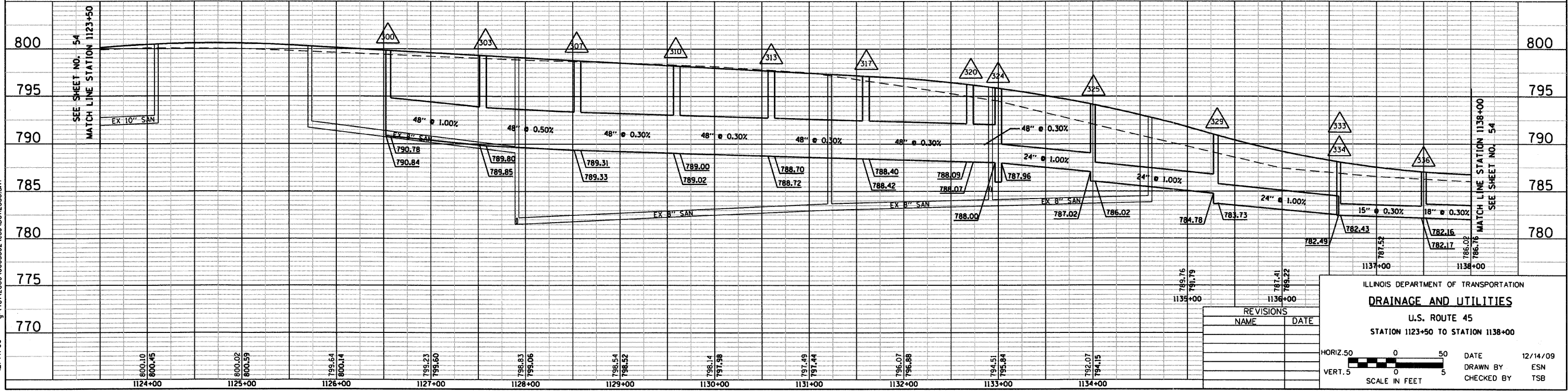
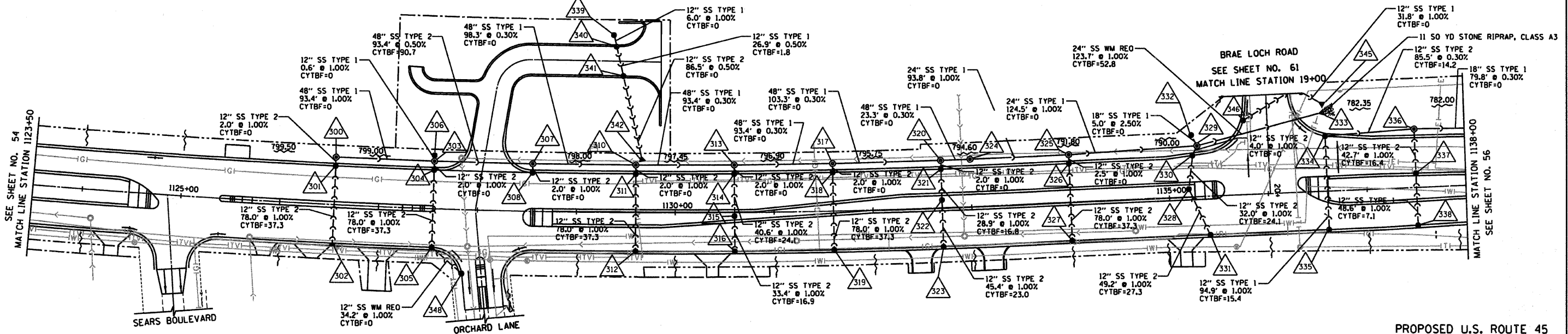
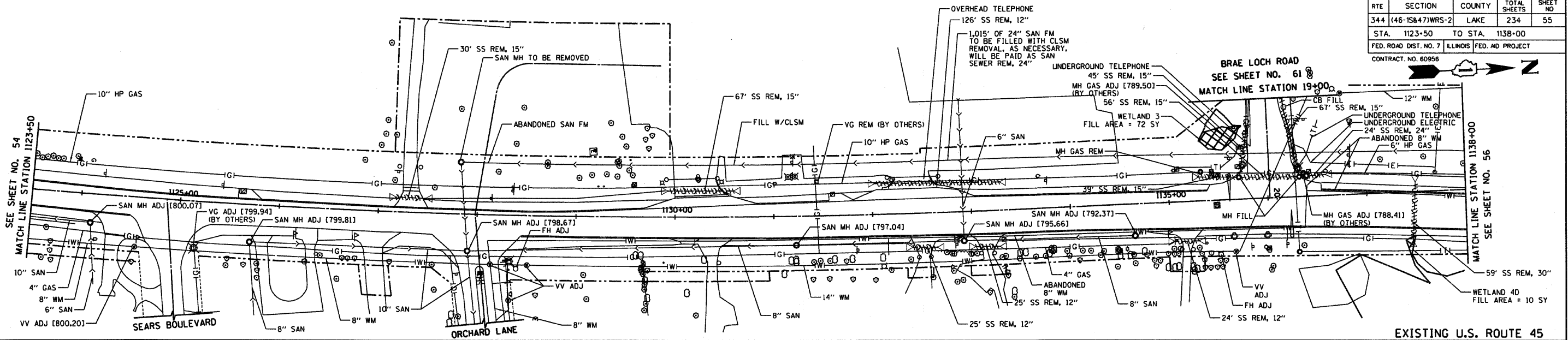


RTE	SECTION	COUNTY	TOTAL SHEETS	SHEET NO
344	(46-15847)WRS-2	LAKE	234	55
STA.	1123+50	TO STA.	1138+00	
FED. ROAD DIST. NO. 7	ILLINOIS FED. AID PROJECT			
CONTRACT NO. 60956				



REVISIONS	
NAME	DATE

ILLINOIS DEPARTMENT OF TRANSPORTATION  
**DRAINAGE AND UTILITIES**  
 U.S. ROUTE 45  
 STATION 1123+50 TO STATION 1138+00

HORIZ. 50 0 50  
 VERT. 5 0 5  
 SCALE IN FEET

DATE 12/14/09  
 DRAWN BY ESN  
 CHECKED BY TSB



12/14/09 - g:\401\2000\0005302\cdd\DU12350.SHT