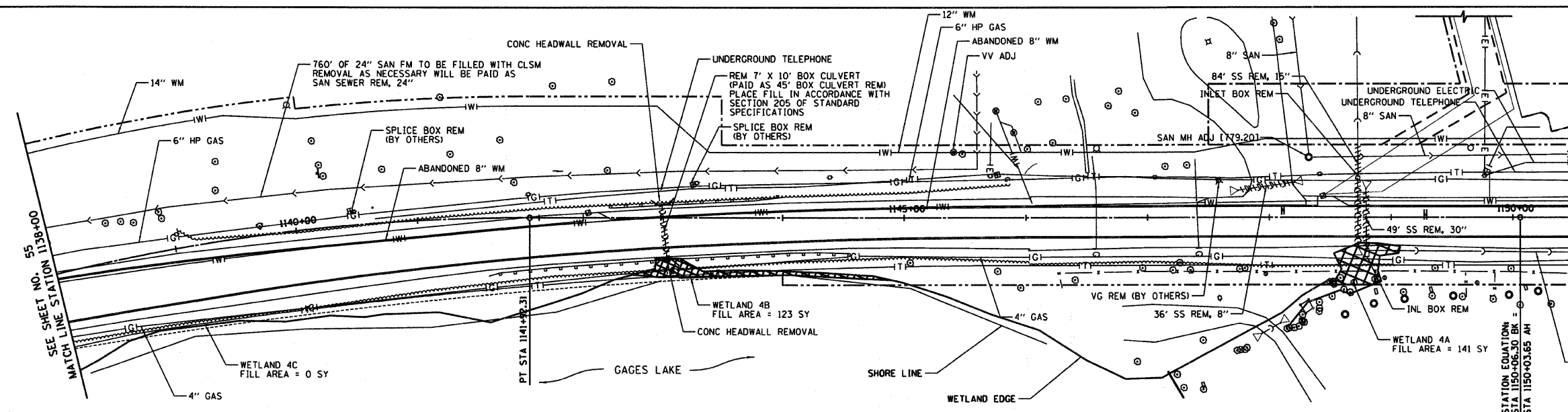
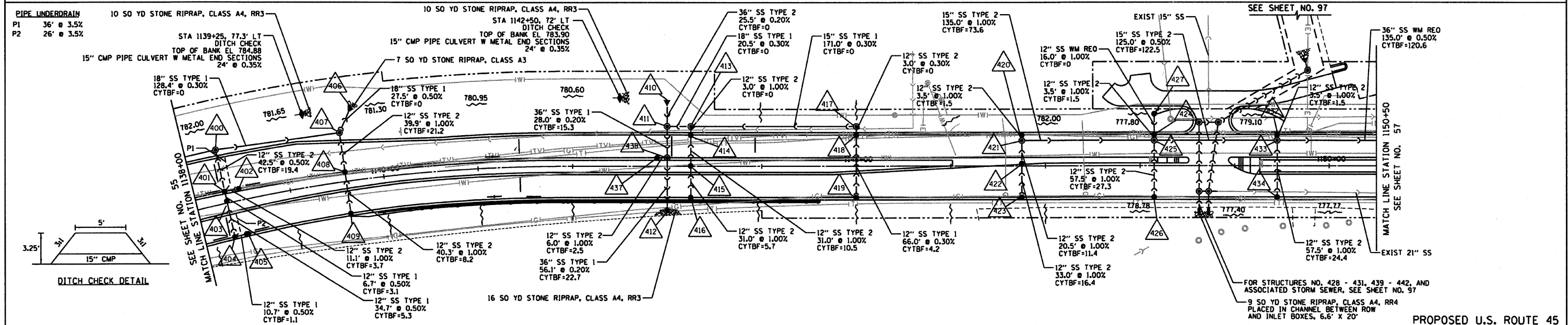


|                       |                 |                 |              |          |
|-----------------------|-----------------|-----------------|--------------|----------|
| RTE                   | SECTION         | COUNTY          | TOTAL SHEETS | SHEET NO |
| 344                   | (46-1S&47)WRS-2 | LAKE            | 234          | 56       |
| STA.                  | 1138+00         | TO STA.         | 1150+50      |          |
| FED. ROAD DIST. NO. 7 | ILLINOIS        | FED. AD PROJECT |              |          |
| CONTRACT NO. 60956    |                 |                 |              |          |

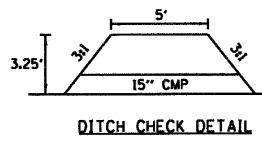


MATCH LINE STATION 1150+50  
SEE SHEET NO. 57

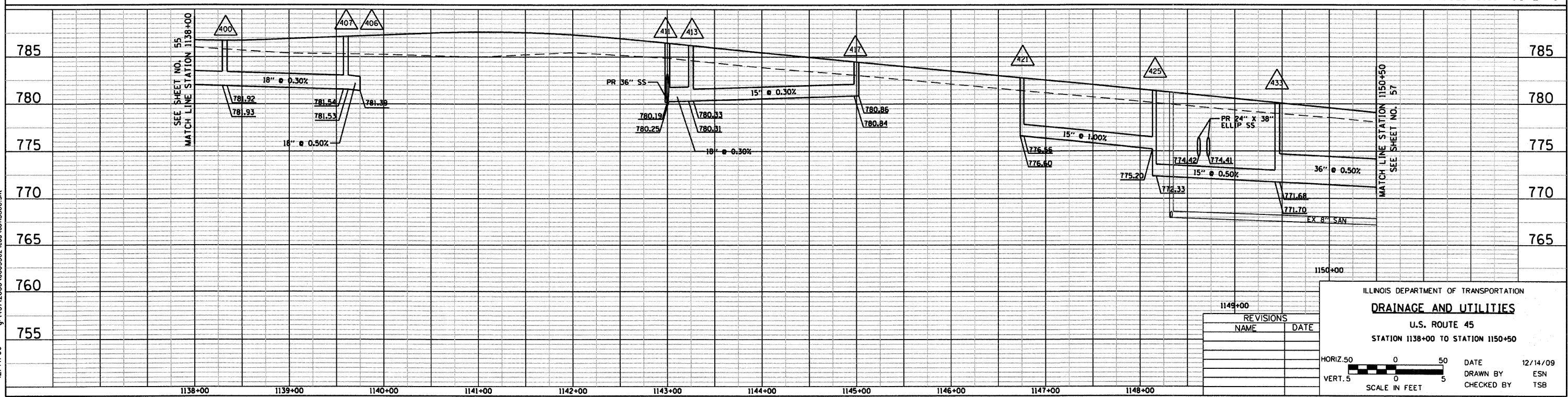
EXISTING U.S. ROUTE 45



PIPE UNDERDRAIN  
P1 36\"/>



PROPOSED U.S. ROUTE 45



| REVISIONS |      |
|-----------|------|
| NAME      | DATE |
|           |      |
|           |      |
|           |      |

ILLINOIS DEPARTMENT OF TRANSPORTATION  
**DRAINAGE AND UTILITIES**  
U.S. ROUTE 45  
STATION 1138+00 TO STATION 1150+50

HORIZ. 50 0 50  
VERT. 5 0 5  
SCALE IN FEET

DATE 12/14/09  
DRAWN BY ESN  
CHECKED BY TSB



12/14/09 - g:\401\2000\0005302\cadd\util\13800.dwg