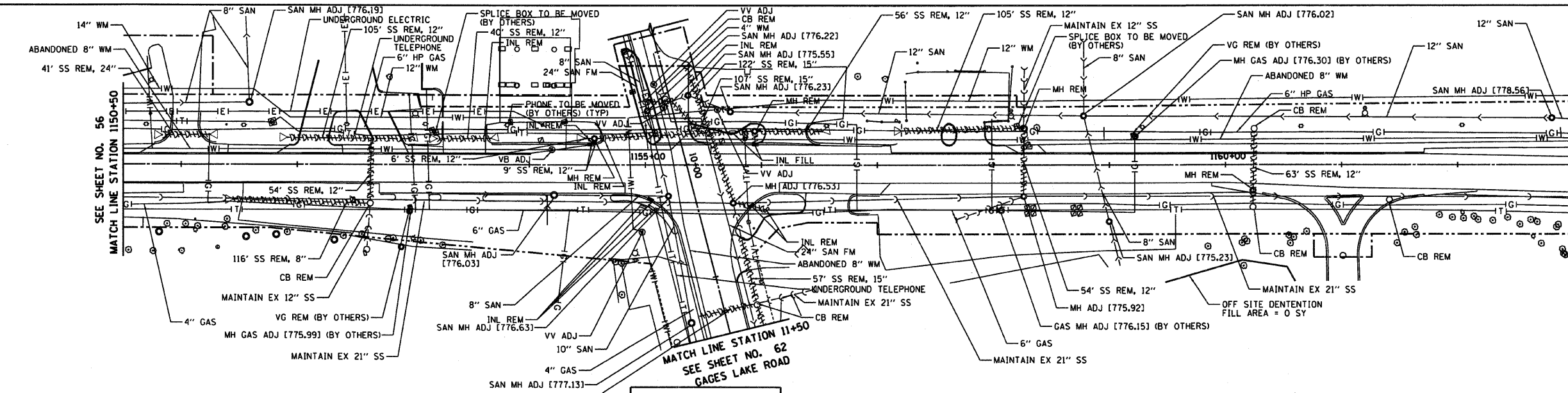


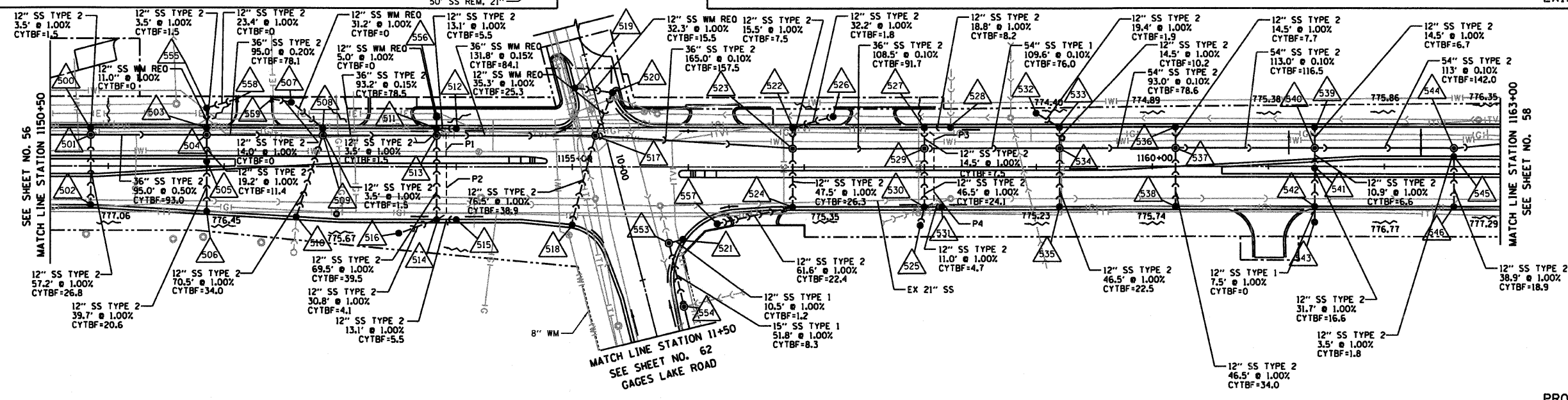
RTE	SECTION	COUNTY	TOTAL SHEETS	SHEET NO
344	(46-15847)WRS-2	LAKE	234	57
STA.	1150+50	TO STA.	1163+00	
FED. ROAD DIST. NO. 7	ILLINOIS	FED. AID PROJECT		



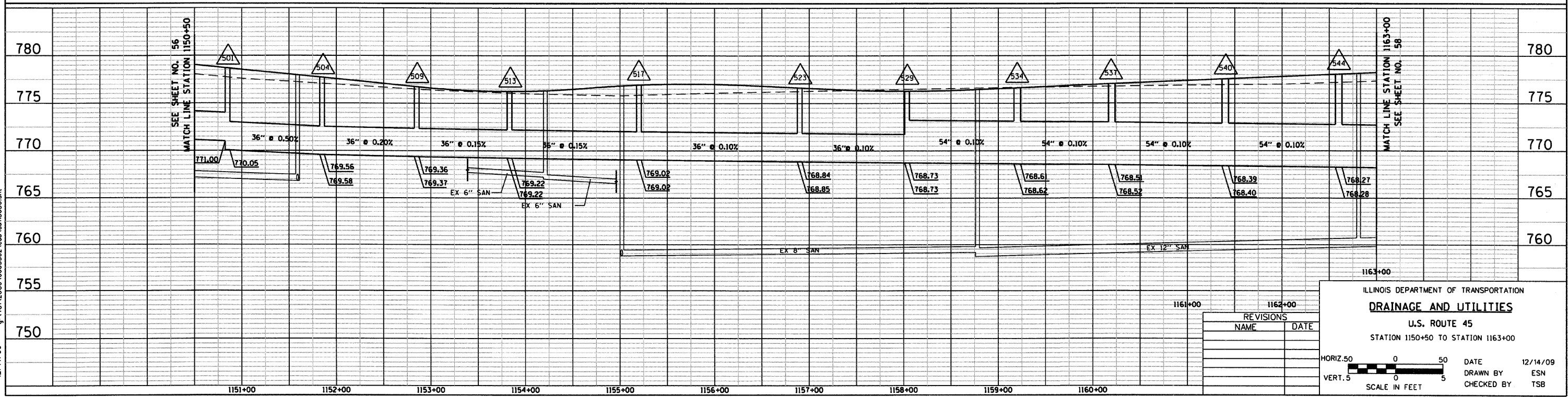
EXISTING U.S. ROUTE 45

PIPE UNDERDRAIN

P1	28" @ 2.0%
P2	50" @ 2.0%
P3	39" @ 2.0%
P4	28" @ 2.0%



PROPOSED U.S. ROUTE 45



REVISIONS	
NAME	DATE

ILLINOIS DEPARTMENT OF TRANSPORTATION
DRAINAGE AND UTILITIES
 U.S. ROUTE 45
 STATION 1150+50 TO STATION 1163+00

HORIZ. 50 0 50
 VERT. 5 0 5
 SCALE IN FEET

DATE 12/14/09
 DRAWN BY ESN
 CHECKED BY TSB



12/14/09 - g:\401\2000\0005302\cod\du\115050.dwg