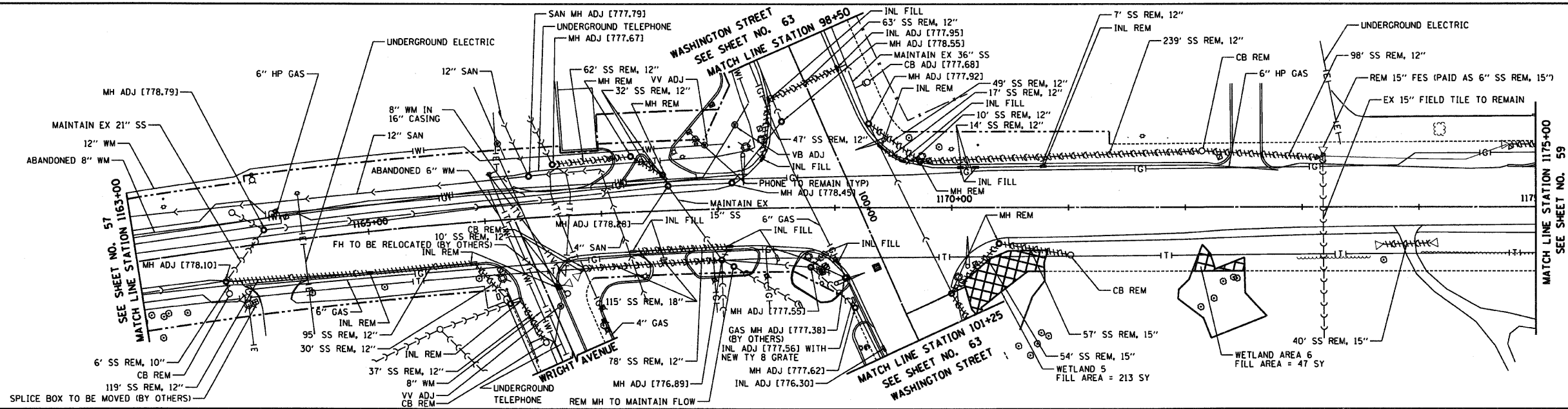
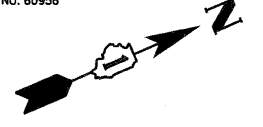
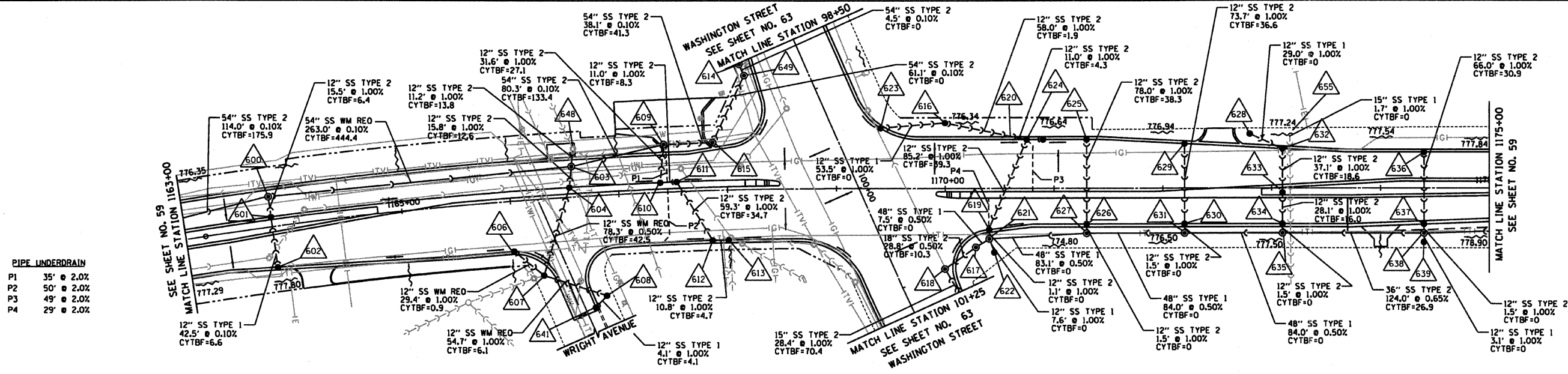


RTE	SECTION	COUNTY	TOTAL SHEETS	SHEET NO
344	(46-15&47)WRS-2	LAKE	234	58
STA. 1163+00		TO STA. 1175+00		
FED. ROAD DIST. NO. 7 ILLINOIS FED. AID PROJECT				
CONTRACT NO. 60956				



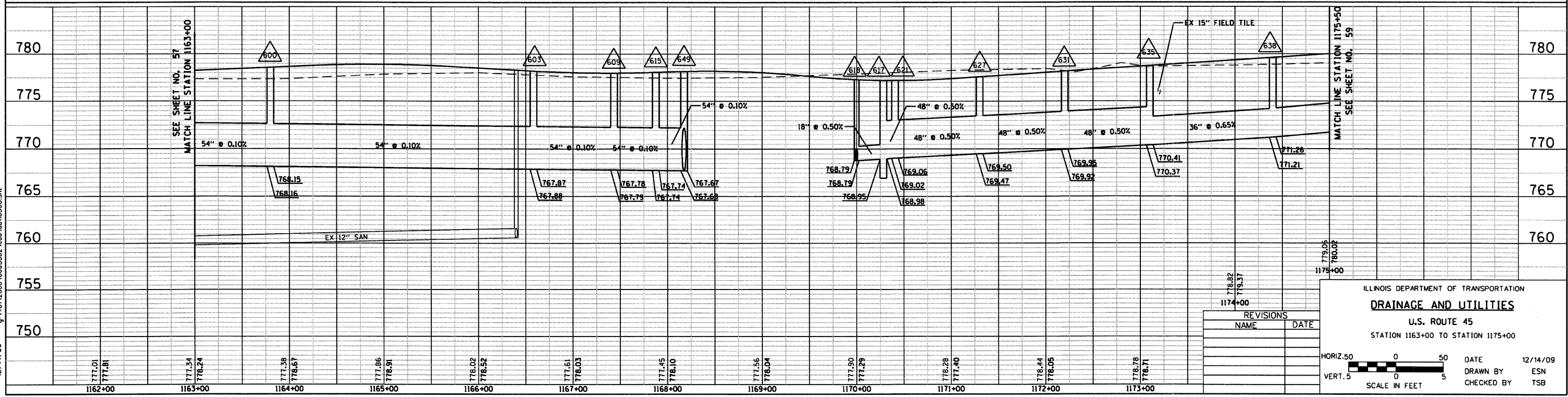
EXISTING U.S. ROUTE 45



PIPE UNDERDRAIN

P1	35"	@ 2.0%
P2	50"	@ 2.0%
P3	49"	@ 2.0%
P4	29"	@ 2.0%

PROPOSED U.S. ROUTE 45



REVISIONS	
NAME	DATE

ILLINOIS DEPARTMENT OF TRANSPORTATION
DRAINAGE AND UTILITIES
 U.S. ROUTE 45
 STATION 1163+00 TO STATION 1175+00

HORIZ. 50 0 50
 VERT. 5 0 5
 SCALE IN FEET

DATE 12/14/09
 DRAWN BY ESN
 CHECKED BY TSB



12/14/09 - g:\401\2000\0005302\cadd\116300.sht