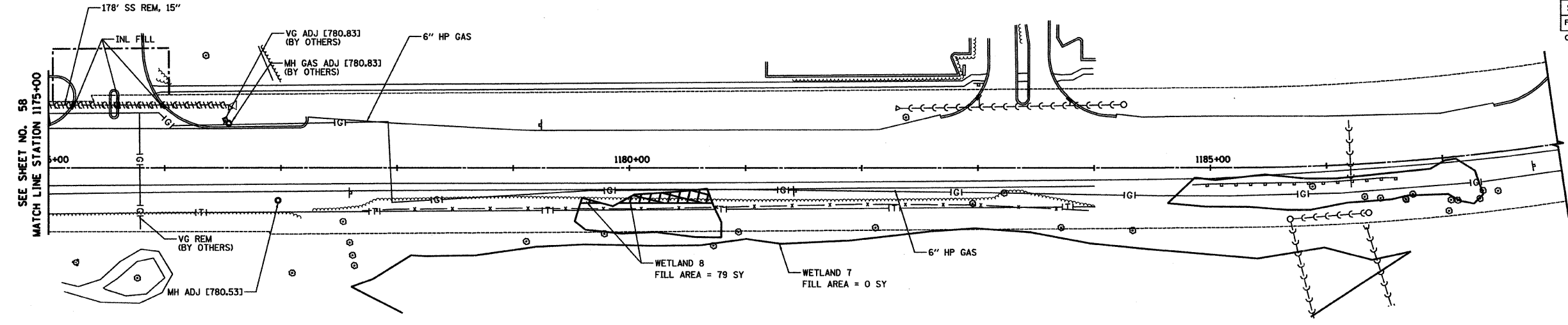
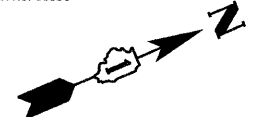
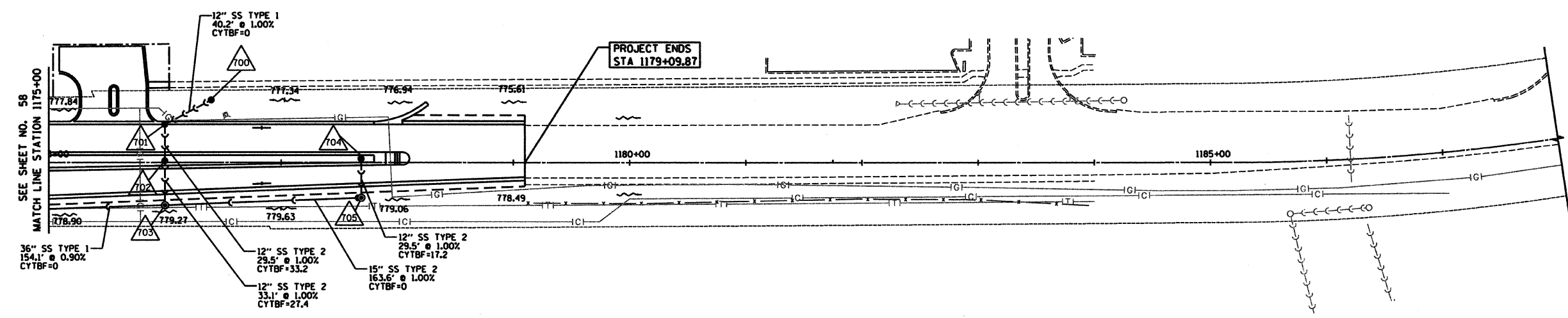


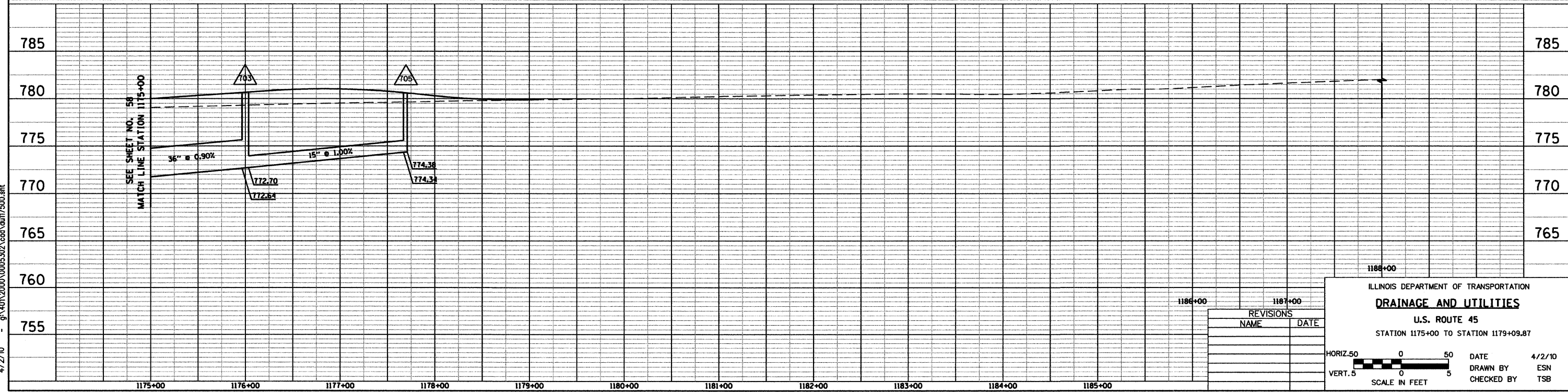
RTE	SECTION	COUNTY	TOTAL SHEETS	SHEET NO
344	(46-1S&47)WRS-2	LAKE	234	59
STA. 1175+00		TO STA. 1179+09.87		
FED. ROAD DIST. NO. 7		ILLINOIS FED. AD PROJECT		
CONTRACT NO. 60956				



EXISTING U.S. ROUTE 45



PROPOSED U.S. ROUTE 45



REVISIONS	
NAME	DATE

ILLINOIS DEPARTMENT OF TRANSPORTATION  
**DRAINAGE AND UTILITIES**  
 U.S. ROUTE 45  
 STATION 1175+00 TO STATION 1179+09.87

HORIZ. 50 0 50  
 VERT. 5 0 5  
 SCALE IN FEET

DATE 4/2/10  
 DRAWN BY ESN  
 CHECKED BY TSB



4/2/10 - g:\401\2000\0005302\cccl\dr17500.sht