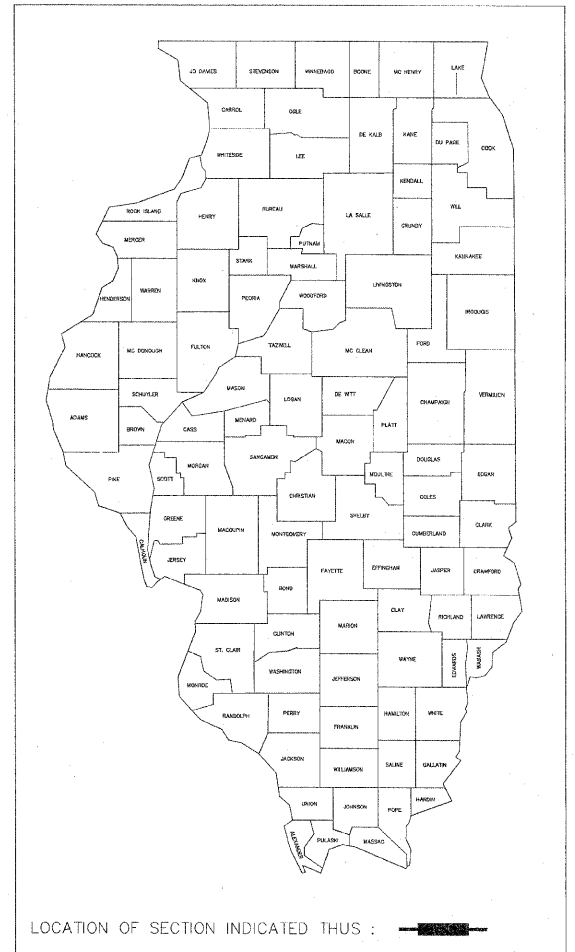


# STATE OF ILLINOIS DEPARTMENT OF TRANSPORTATION RIGHT OF WAY PLANS FOR PROPOSED FEDERAL AID HIGHWAY

F.A. R.I.E.	SECTION	COUNTY	TOTAL SHEETS	SHEET NO.
*		LAKE	39	1
F.H.W.A. REG.	ILLINOIS	PROJECT		

\*FAP 344 (U.S. RTE. 45)

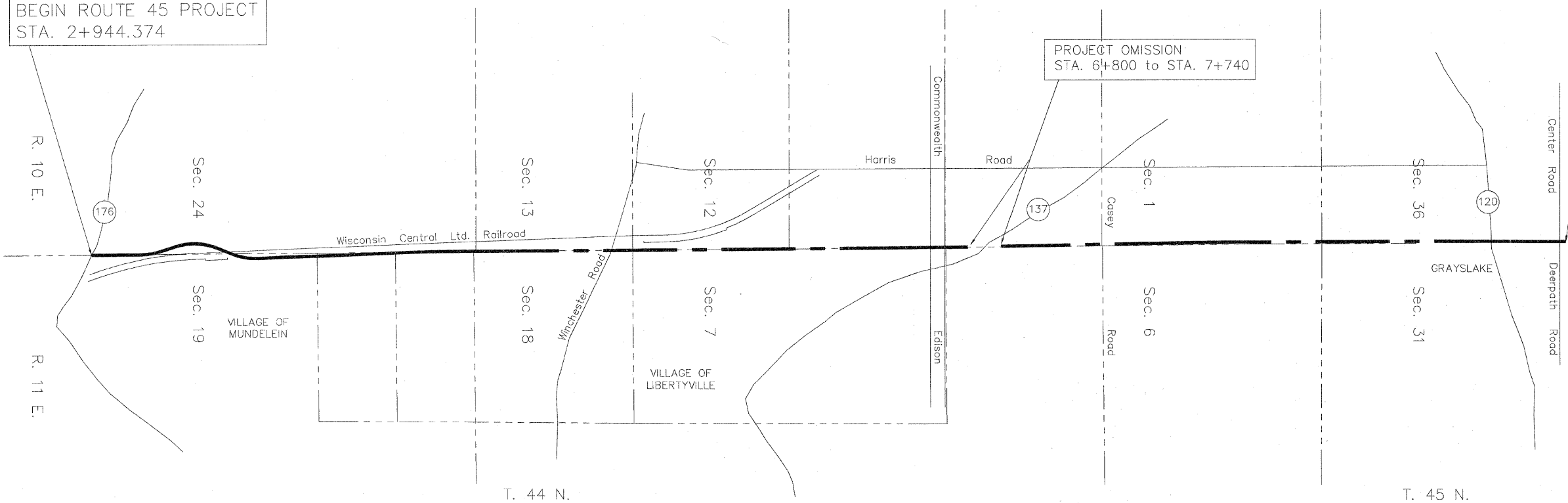
ROUTE : FAP 344 (U.S. ROUTE 45)  
SECTION : 46R  
PROJECT NO. :  
JOB NO. : R91-019-91  
COUNTY : LAKE  
LIMITS ILLINOIS ROUTE 176 TO IL 120



BEGIN ROUTE 45 PROJECT  
STA. 2+944.374

END ROUTE 45 PROJECT  
STA. 33+893.828

PROJECT OMISSION  
STA. 6+800 to STA. 7+740



STATE OF ILLINOIS  
DEPARTMENT OF TRANSPORTATION  
DIVISION OF HIGHWAYS

SUBMITTED \_\_\_\_\_ 19 \_\_\_\_  
DISTRICT ENGINEER

EXAMINED \_\_\_\_\_ 19 \_\_\_\_  
DISTRICT RIGHT OF WAY PLANS ENGINEER

PASSED \_\_\_\_\_ 19 \_\_\_\_  
DISTRICT LAND ACQUISITION ENGINEER

REVIEWED \_\_\_\_\_ 19 \_\_\_\_  
CENTRAL BUREAU RIGHT OF WAY PLANS ENGINEER

APPROVED \_\_\_\_\_ 19 \_\_\_\_  
ENGINEER OF LAND ACQUISITION

PROJECT LENGTH = 3,791 m [12,439 L.F.] SOUTH END, 3,185 m [10,451 L.F.] NORTH END = 4.335 TOTAL MILES, U.S. ROUTE 45