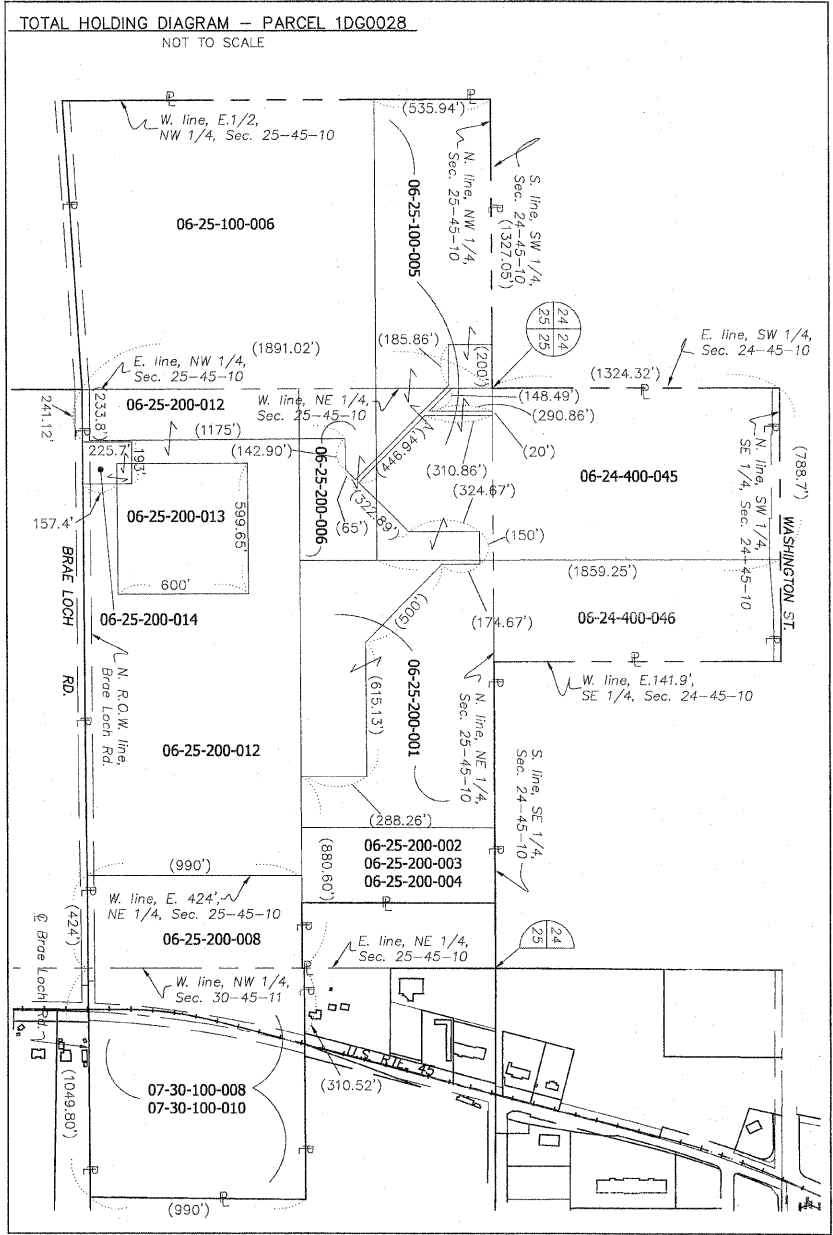
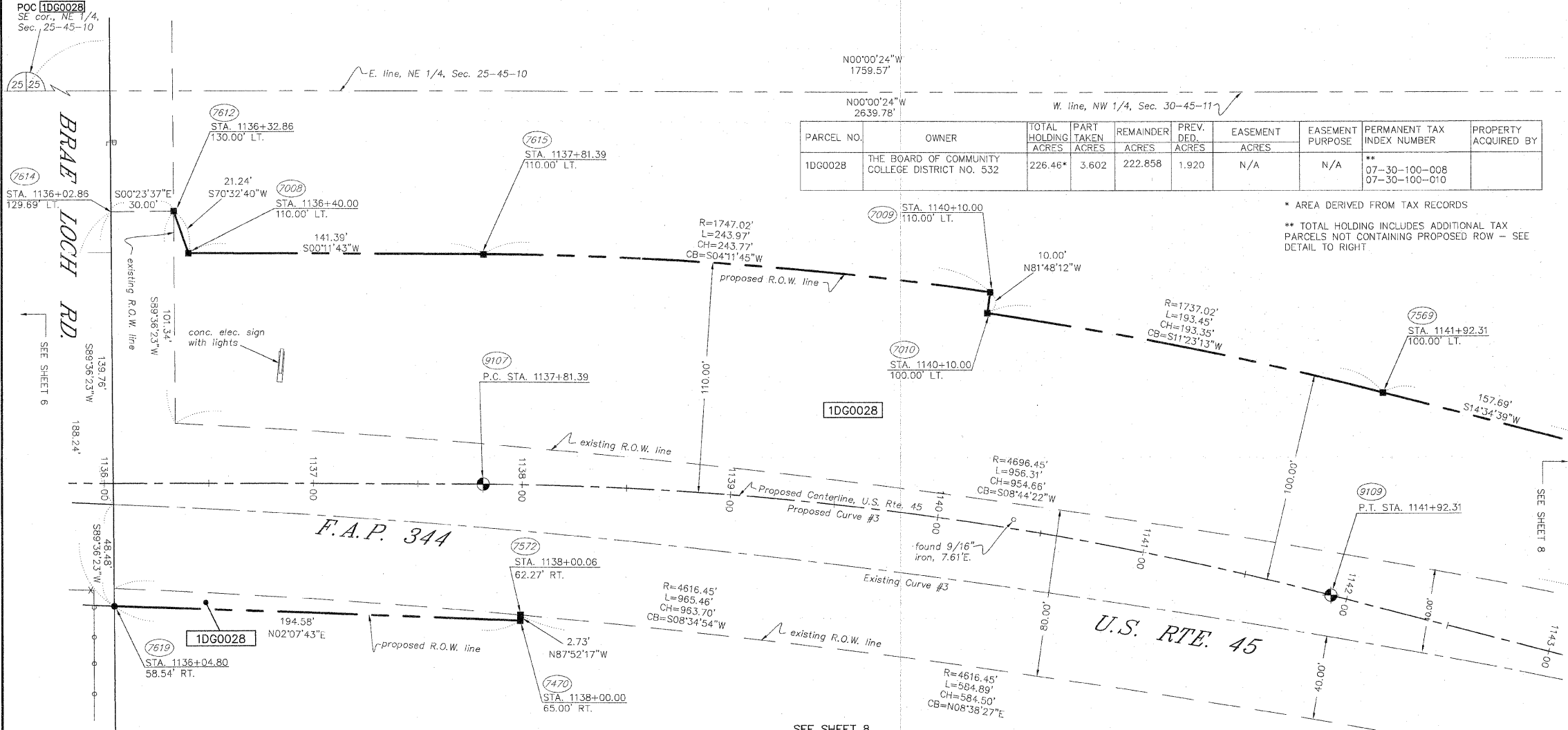
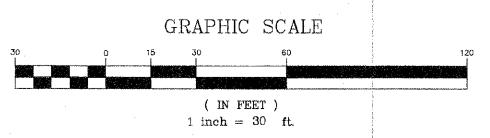
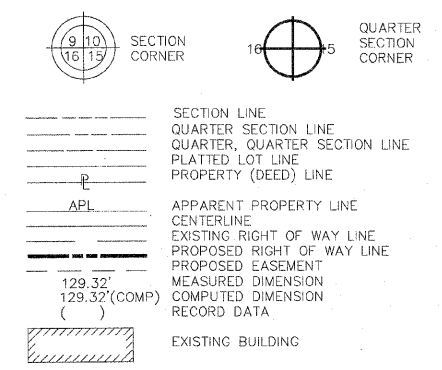


PART OF THE NW 1/4 OF SEC. 30, T.45N., R.11E., OF THE 3rd P.M., IN LAKE COUNTY, ILLINOIS



LEGEND

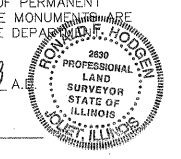


CURVE DATA TABLE		CURVE DATA TABLE	
Existing Curve No. 3		Proposed Curve No. 3	
Δ	13°27'30"	Δ	14°22'56"
D	01°13'50"	D	03°30'00"
T	549.41'	T	206.55'
L	1093.76'	L	410.92'
R	4656.45'	R	1637.02'
E	32.30'	E	12.98'
P.C. STA.	1134+85.39	P.C. STA.	1137+81.39
P.T. STA.	1143+79.16	P.T. STA.	1141+92.31
P.I. STA.	1140+34.80	P.I. STA.	1139+87.94

STATE OF ILLINOIS }  
COUNTY OF WILL }

THIS IS TO CERTIFY THAT RUETTIGER, TONELLI AND ASSOCIATES, AN ILLINOIS DESIGN FIRM, HAS SURVEYED THE PLAT OF HIGHWAYS SHOWN HEREON IN SECTION 30, TOWNSHIP 45 NORTH, RANGE 11 EAST OF THE THIRD PRINCIPAL MERIDIAN, LAKE COUNTY; THAT THE SURVEY IS TRUE AND COMPLETE AS SHOWN TO THE BEST OF MY KNOWLEDGE AND BELIEF; THAT THE PLAT CORRECTLY REPRESENTS SAID SURVEY, THAT ALL MONUMENTS FOUND AND ESTABLISHED ARE OF PERMANENT QUALITY AND OCCUPY THE POSITIONS SHOWN THEREON AND THAT THE MONUMENTS ARE SUFFICIENT TO ENABLE THE SURVEY TO BE RETRACED. MADE FOR THE DEPARTMENT OF TRANSPORTATION, STATE OF ILLINOIS.

DATED AT JOLIET, ILLINOIS THIS 17th DAY OF July 2008  
RONALD F. HODGEN P.L.S. NO. 2630  
MY LICENSE EXPIRES NOVEMBER 30, 2008



NOTE: BASIS OF BEARING IS THE ILLINOIS STATE PLANE COORDINATE SYSTEM EAST ZONE, NAD83.

**RUETTIGER, TONELLI & ASSOCIATES, INC.**  
Land Surveyors/Engineers/Planners/Landscape Architects/G.I.S. Consultants

2174 CEDRA STREET, SUITE ILLINOIS 60435, NAPERVILLE, ILLINOIS 60563  
PH. (815) 744-6600 FAX (815) 744-0121 PH. (630) 420-7740 FAX (630) 420-7741

**PLAT OF HIGHWAYS**  
STATE OF ILLINOIS  
DEPARTMENT OF TRANSPORTATION  
F.A.P. 344 (U.S. RTE. 45)  
SECTION (46-IS & 47)WRS-2 LAKE COUNTY  
PROJECT JOB NO. R91-022-01  
STATION 1136+00 TO STATION 1143+00  
SCALE: 1" = 30' SHEET 7 OF 16

BUREAU OF LAND ACQUISITION  
201 WEST CENTER COURT  
SCHAUMBURG, ILLINOIS 60196

REVISION DATE	REVISION	MADE BY